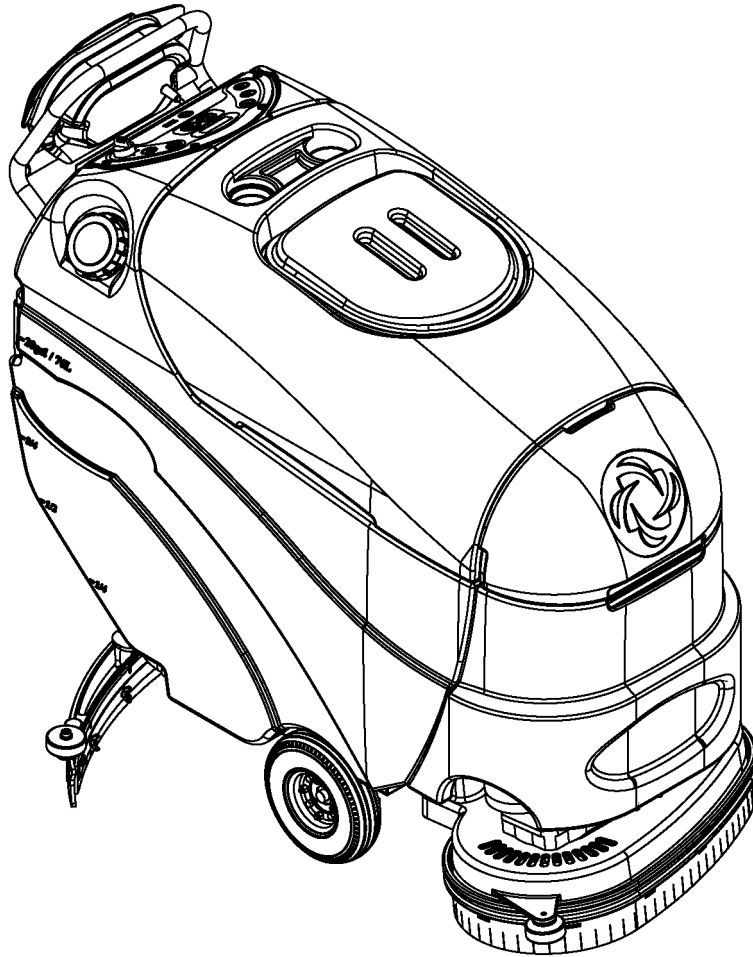


Convertamatic™

BA 625, 725, 825



Parts List

Advance Models: 56315000(24D-C), 56315001(26D), 56315002(28D), 56315003(24C-C), 56315004(28D-C), 56315005(28C-C), 56315006(X24D-C), 56315007(X24C-C), 56315008(26D-C), 56315009(X26D-C), 56315010(26C-C), 56315011(X26C-C), 56315012(X28D-C), 56315013(X28C-C), 56315804(32D-C), 56315805(X32D-C)
Nilfisk Models: 56315800(625), 56315801(725), 56315802(725C), 56315803(825)



**Nilfisk
Advance**

setting standards

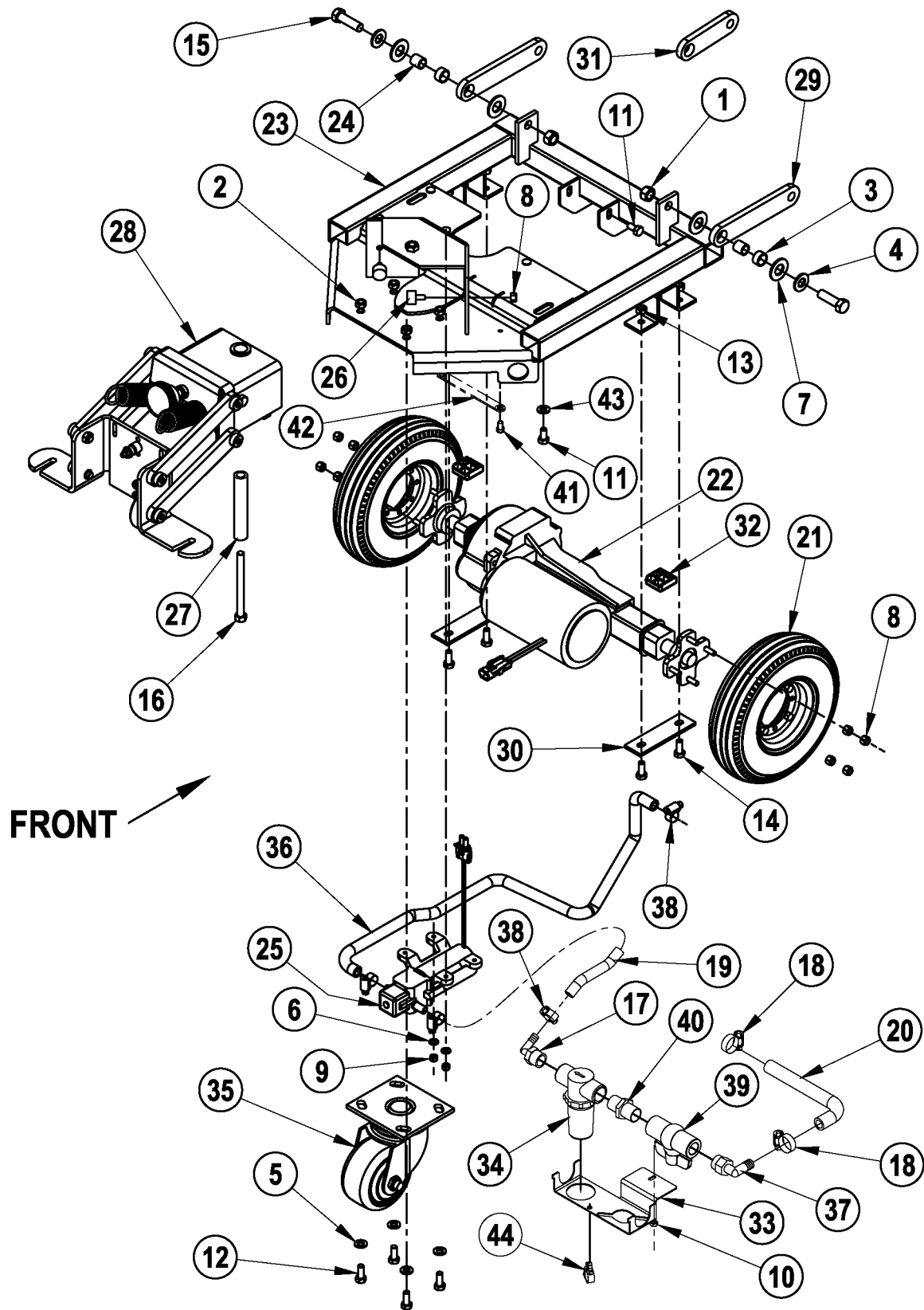
11/04 revised 4/08 FORM NO. 56042451

DESCRIPTION	PAGE
Chassis System	2-3
Chassis System (squeegee linkage assy before SN1915725).....	4-5
Chassis System (squeegee linkage assy after SN1915724).....	6-7
Decal System.....	8-9
Recovery System.....	10-11
Scrub System-Disk (24" / BA 625, 26", 28" / BA 725)	12-13
Scrub System-Disk (32" / BA 825)	14-15
Scrub System-Cylindrical.....	16-17
Solution System / Electrical-1	18-19
Solution System / Electrical-2	20-21
Chemical Assembly (AXP Models Only)	22-23
Paddle Assembly	24-25
Squeegee Assembly	26-27
Wiring Diagram	28-29
Optional Kits & Accessories.....	30
Brush Selector Guide-Disk	31
Brush Selector Guide-Cylindrical.....	32

WHEN ORDERING PARTS

- * Use the 8 digit numbers from the "Ref. No." columns in this parts list.
- * Specify the model and serial number of the machine.
- * Use the space below to record the model and serial number for future reference.

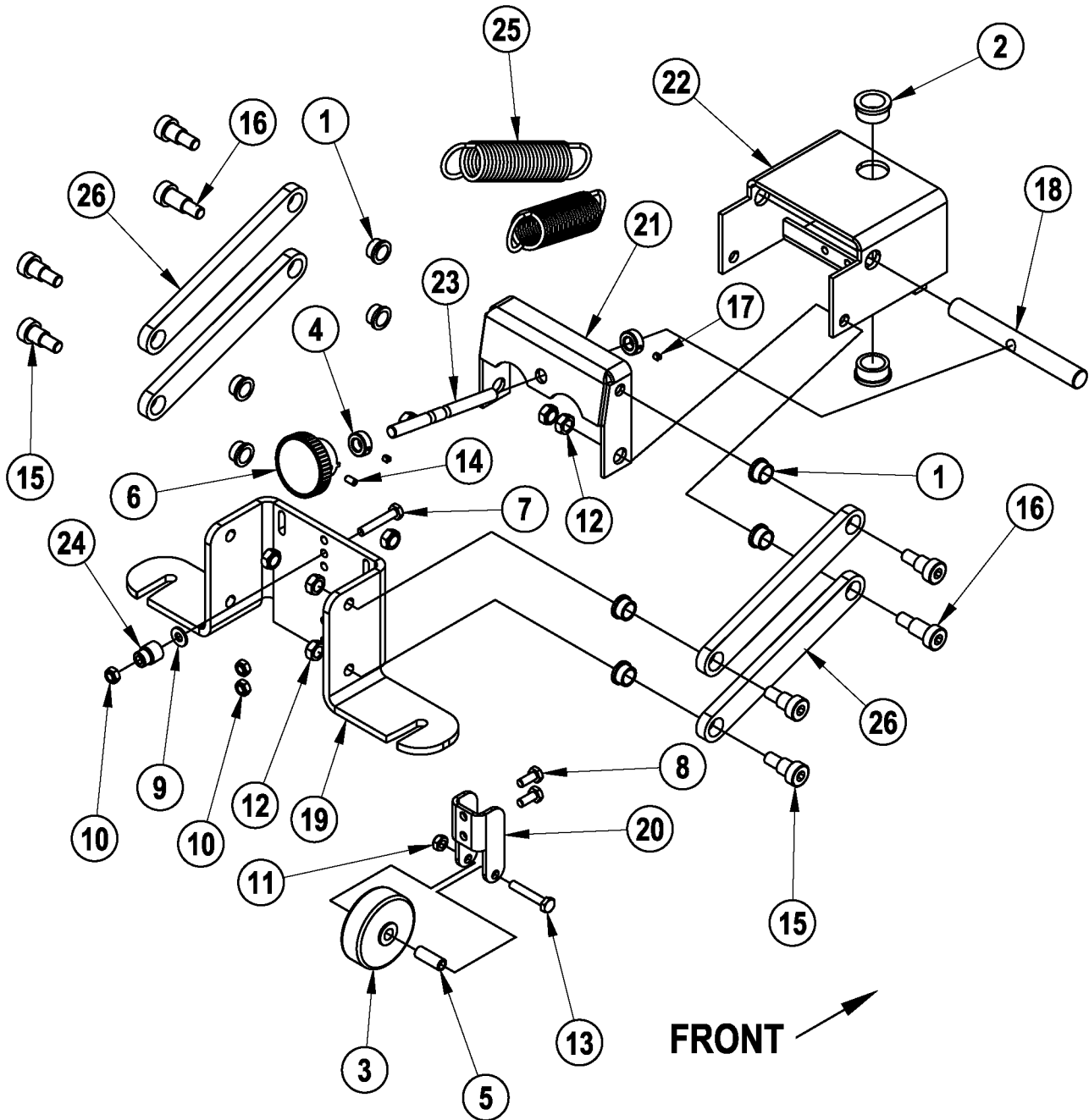
Model _____ Serial No. _____



Item	Ref. No.	Qty	Description
1	56003312	2	Nut, Hex Nyl Loc M12-1.75
2	56003389	4	Nut, Hex Nyl Loc M8-1.25
3	56370878	2	Bearing, Sleeve
4	56001879	2	Wsh, Flt SAE 1/2
5	56001939	4	Wsh, Flt SAE 5/16
6	56001954	2	Wsh, Flt SAE #10
7	56002022	4	Wsh, Flt SAE 5/8
8	56002708	10	Nut, Hex Nyl Loc 1/4-20
9	56002768	2	Nut, Hex Nyl Loc 10-24
10	56002832	1	Nut, Hex Nyl Loc-Thin 10-24
11#	56003012	3	Scr, Hex Hd SS 5/16-18x.75
12	56003179	4	Scr, Hex Thd To Hd M8-1.25x20mm
13	56003405	4	Nut, Hex Nyl Loc SS M8x1.25
14	56003435	4	Scr, Hex Hd SS 8-1.25x20mm
15	56003637	2	Scr, Hex M12-1.75x40mm
16	56009241	1	Scr, Hex Hd 3/8-16x4.25
17	56900033	1	Barb, 90 Elbow 3/8 X 1/2 Npt
18	56219932	2	Clamp, Hose SAE #6
19	56244991	1	Hose, PVC .375
20	56262180	1	Hose, Spiral .500
21	56315115	2	Wheel, Drive TSBUS2006-941
22	56315062	1	Transaxle, 24V (M1)
*	56315377	1	Motor
*	56315378	4	Carbon Brush
*	56315379	2	Neoprene Mounting Sleeve
23	56315076	1	Weldment, Chassis TSBUS2005-895
24	56315080	2	Bushing
25	56315108	1	Pump, 24VDC (M7)
26	56315111	2	Cylindrical Mount
27	56315154	1	Bushing, Spacer
28	56315165	1	Assembly, Squeegee Linkage
29	56315179	2	Linkage Arm
30	56315234	2	Plate
31	56315239	1	Linkage Arm only used before TSBUS2007-957
32	56315258	2	Shim
33	56315260	1	Bracket, Filter Mount
34	56315296	1	Solution Filter
35	56365555	1	Caster Swivel 4.0x2.0
36	56391802	1	Hose, Spiral .375
37	56409152	1	Barb, 90 Elbow 1/2 X 1/2npt
38	56756364	4	Clamp, Hose SAE #4
39	56315607	1	Ball Valve
40	56412182	1	Nipple, Hex 3/4-14
41#	56009030	1	Scr, Pan Phil Thd Form 10-24 x .38
42	56467544	1	Chain
43#	56002220	2	Wsh, Flt STD 5/16 (Advance only)
44	56900756	1	Clip, Conduit

* = Not Shown

= Revised or new since last update



04-11

CHASSIS SYSTEM (squeegee linkage assy before SN1915725)

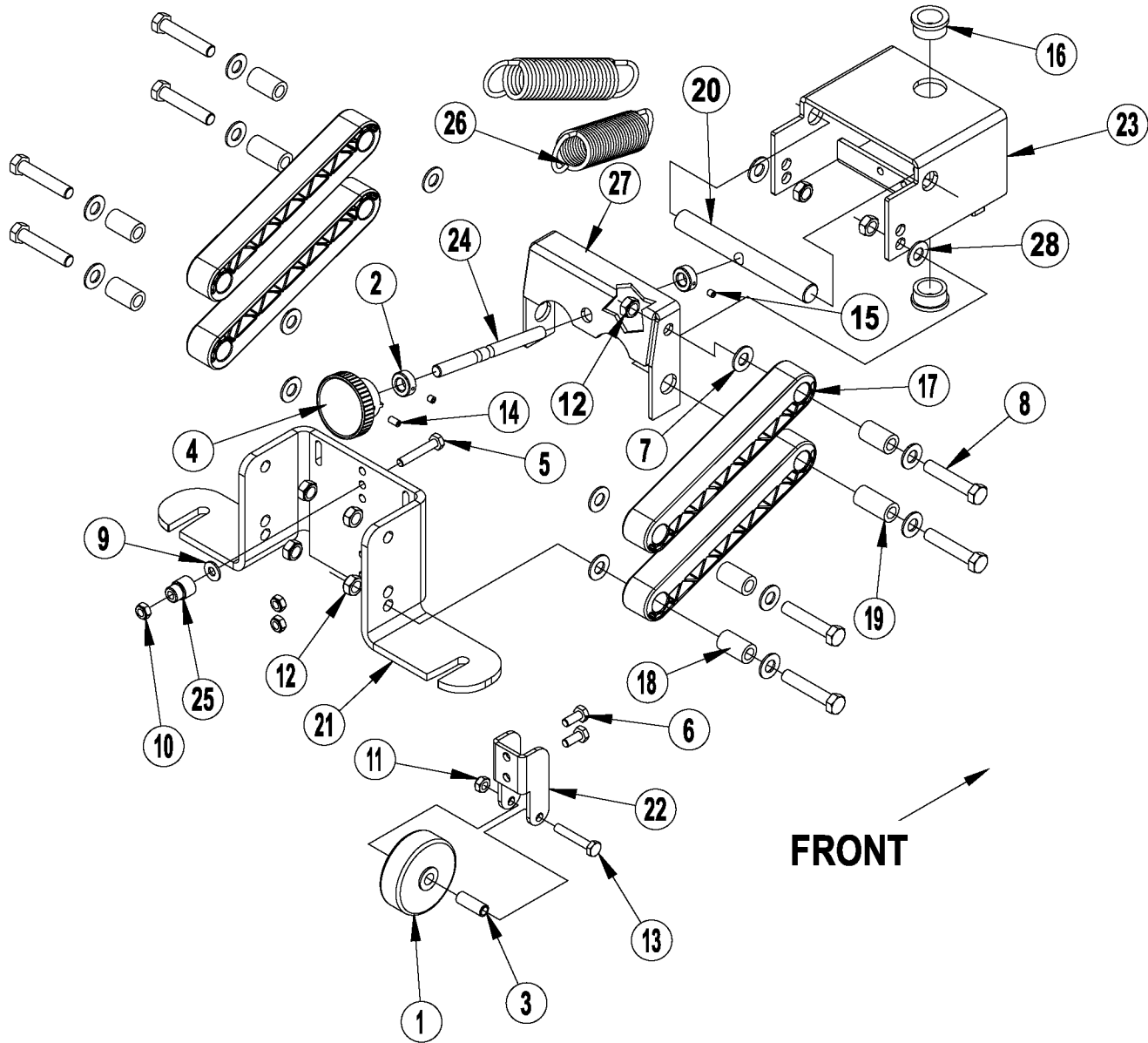
08-4

Convertamatic™ / BA 625, 725, 825

5

Item	Ref. No.	Qty	Description
#	56315165	1	Squeegee Linkage Assembly NOTE 1
1	56185264	8	Bearing, Flange
2	56250414	2	Bearing, Flange
3	56324350	1	Wheel
4	56331076	2	Collar
5	56471220	1	Bushing
6	56475480	1	Knob
7	56001833	1	Scr, Hex Hd 1/4-20x1.50
8	56001836	2	Scr, Hex Hd 1/4-20x.62
9	56002098	1	Wsh, Flt SAE 1/4
10	56002840	3	Nut, Hex Nyl Loc-Thin 1/4-20
11	56002850	1	Nut, Hex Nyl Loc-Thin SS 1/4-20
12	56002852	8	Nut, Hex Nyl Loc-Thin SS 3/8-16
13	56002901	1	Scr, Hex Hd SS 1/4-20x1.50
14	56003123	1	Scr, Soc Set 10-24x.38
15	56003682	6	Scr, Soc Shd .50 X .50 X 3/8-16
16	56003692	2	Scr, Soc Shd .50 X .75 X 3/8-16
17	56009084	2	Scr, Soc Set Loc 10-24x.19
18	56315082	1	Pin
19	56315151	1	Bracket, Squeegee Mount
20	56315153	1	Bracket, Wheel
21	56315180	1	Bracket, Squeegee Level
22	56315196	1	Weldment, Squeegee
23	56315240	1	Rod, Adjustment
24	56315245	1	Bushing, Squeegee Cable
25	56315295	2	Spring, Extension
26	56315338	4	Linkage Arm

NOTE 1: This version of the Squeegee Linkage Assembly was only used on Advance branded models.



04-11

CHASSIS SYSTEM (squeegee linkage assy after SN1915724 / ALL Nilfisk)

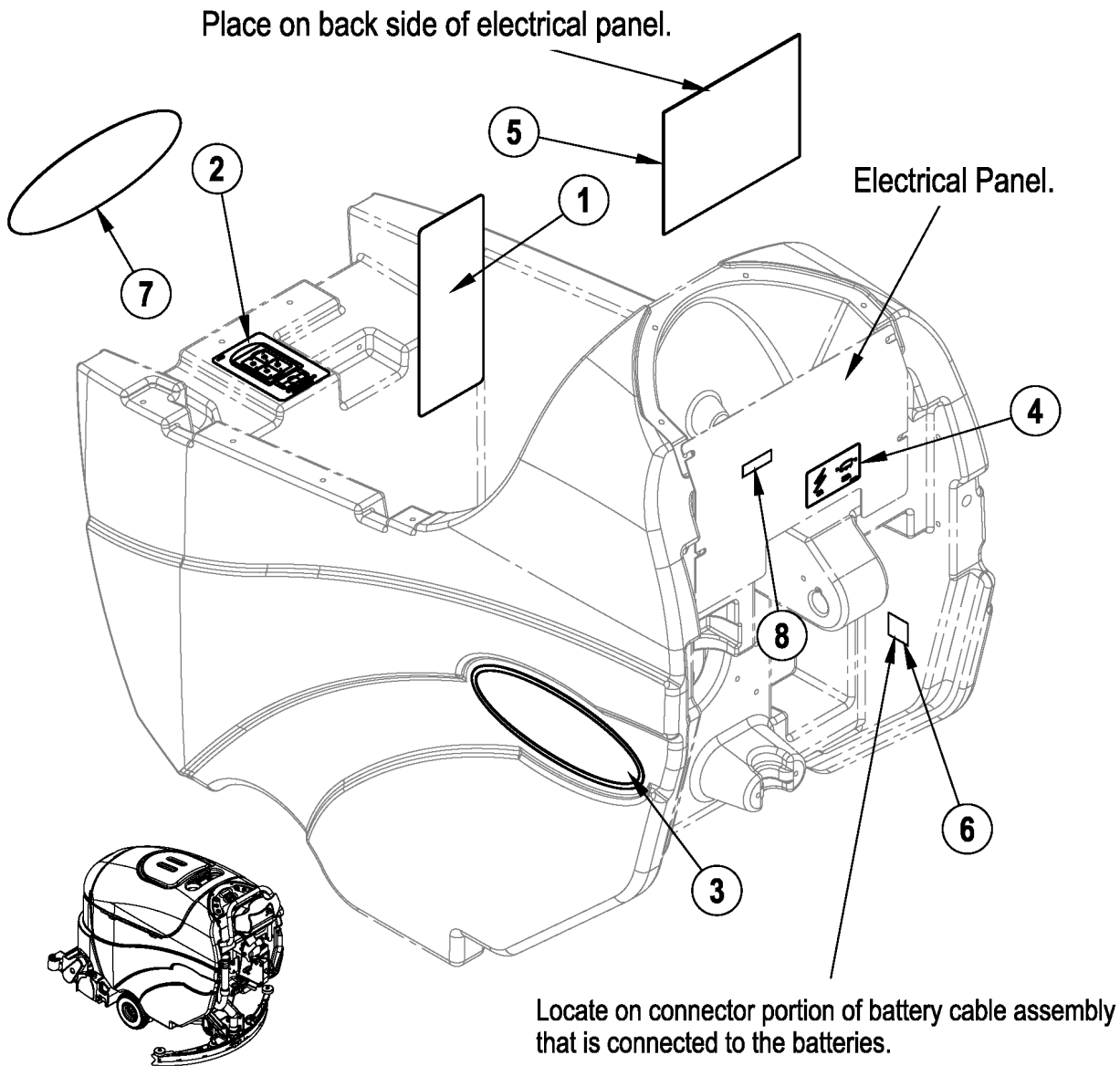
08-4

Convertamatic™ / BA 625, 725, 825

7

Item	Ref. No.	Qty	Description
	56315165	1	Squeegee Linkage Assembly
1	56324350	1	Wheel
2	56331076	2	Collar
3	56315580	1	Bushing
4	56475480	1	Knob
5	56001833	1	Scr, Hex 1/4-20 X 1.50
6	56001836	2	Scr, Hex 1/4-20 X .62
7	56002063	14	Wsh, Flt SAE 3/8
8	56002091	8	Scr, Hex 3/8-16 X 2.00
9	56002098	1	Wsh, Flt SAE 1/4
10	56002840	3	Nut, Hex Nyl Loc-Thin 1/4-20
11	56002850	1	Nut, Hex Nyl Loc-Thin Ss 1/4-20
12	56002852	8	Nut, Hex Nyl Loc-Thin Ss 3/8-16
13	56002901	1	Scr, Hex SS 1/4-20 X 1.50
14	56003123	1	Scr, Soc Set 10-2 4x .38
15	56009084	2	Scr, Soc Set Loc 10-24 X .19
16	56250414	2	Bearing, Flange
17#	56315941	4	Linkage Arm, Molded
18	56315067	6	Spacer, Phenolic
19	56315068	2	Spacer, Phenolic
20	56315082	1	Pin
21	56315151	1	Bracket, Squeegee Mount
22	56315153	1	Bracket, Wheel
23	56315196	1	Weldment, Squeegee
24	56315240	1	Rod, Adjustment
25	56315245	1	Bushing, Squeegee Cable
26	56315295	2	Spring, Extension
27	56315713	1	Bracket, Squeegee Level
28	56002940	2	Wsh, Flt SAE SS 5/8

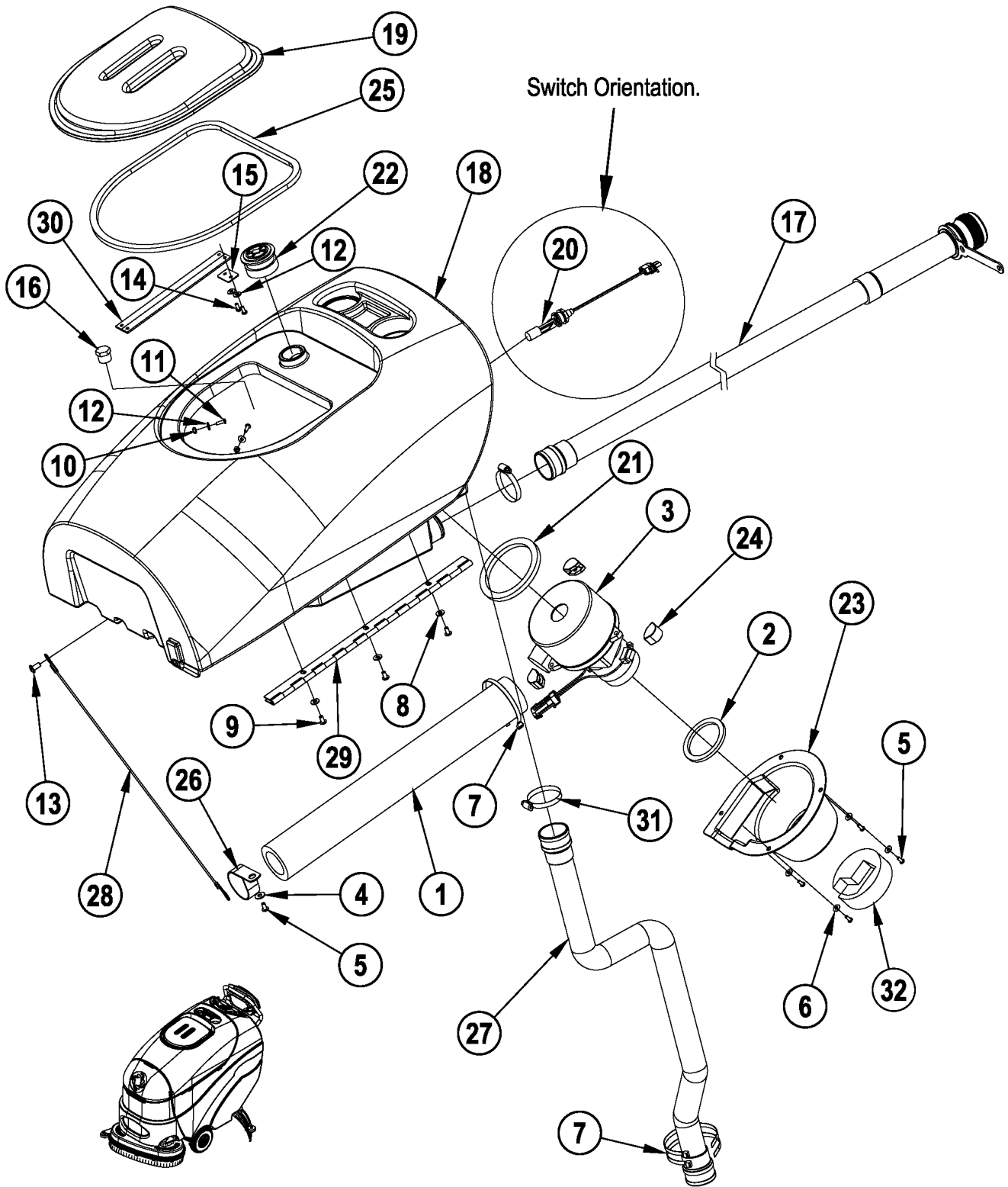
= Revised or new since last update



04-11	DECAL SYSTEM		
08-4	Convertamatic™ / BA 625, 725, 825		9

Item	Ref. No.	Qty	Description
1	56014601	1	Decal, Caution
2	56016688	1	Decal, Battery Wiring
3	56016689	2	Decal, Convertamatic (Advance only)
	56315706	2	Decal, Convertamatic AXP (Advance only)
	56315830	2	Decal, BA625 (Nilfisk only)
	56315831	2	Decal, BA725 (Nilfisk only)
	56315832	2	Decal, BA825 (Nilfisk only)
4	56016690	1	Decal, Circuit Breaker
5	56016691	1	Decal, Ladder Diagram
6	56054192	1	Decal, Charger
7	56016349	1	Decal, Advance (Advance only)
	56317130	1	Decal, Nilfisk (Nilfisk only)
8#	56014450	1	Decal, Patent Number

= Revised or new since last update



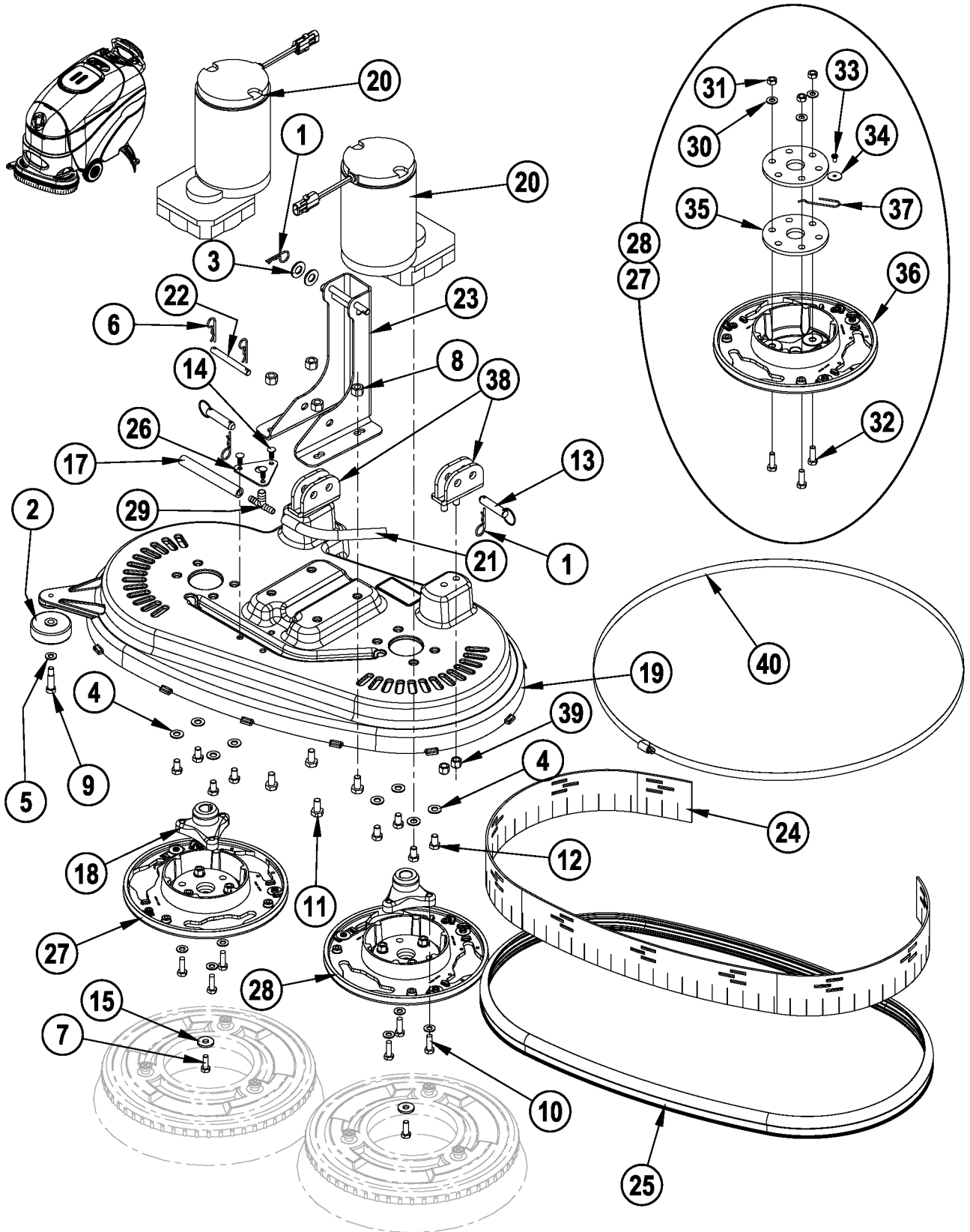
Item	Ref. No.	Qty	Description
1	56315375	1	Foam, Acoustical (Advance only)
	56315847	1	Foam Tube Assembly (Nilfisk only)
2	56412154	1	Gasket, Vacuum Duct
3	56412218	1	Motor, Vac 24vdc (M4) (Advance only)
	56412300	1	Motor, Vac 24vdc W/Filter (M4) (Nilfisk only)
*	56397098	1	Carbon Brush set of 2 (for 56412218 & 56412300)
4	56001906	1	Wsh, Flt STD 1/4
5	56001993	5	Scr, Pan Phil 10-24x.50
6	56002053	4	Wsh, Flt STD #10
7#	56477613	3	Tie, Cable
8	56002098	3	Wsh, Flt SAE 1/4
9	56002145	3	Scr, Pan Phil 1/4-20x.50
10	56002849	2	Nut, Hex Nyl Loc-Thin SS 10-24
11	56002896	2	Scr, Pan Phil SS 10-24x.62
12	56002919	4	Wsh, Flt STD SS #10
13	56003003	1	Scr, Pan Phil 5/16-18x.62
14	56009005	2	Scr, Pan Phil SS Type B 10-16 x .75
15	56315346	1	Plate
16#	56305464	1	Plug, 3/4 Hex Pipe NOTE 1
17#	56601400	1	Drain Hose NOTE 2
*#	56601411	1	Drain Hose Cap Kit
*#	56601412	1	Drain Hose Kit NOTE 2
18#	56315779	1	Tank, Recovery
19#	56315176	1	Cover, Recovery Tank
20	56315096	1	Switch, Electromagnetic (S4)
21	56315098	1	Gasket
22	56315099	1	Screen, Fan Inlet
23	56315102	1	Shroud, Vac Motor
24	56315141	3	Mount, Vibration
25	56315220	1	Gasket, Recovery Lid
26	56315257	1	Clamp, P
27	56315268	1	Vac Hose Assy.
28	56315272	1	Cable Assy
29	56315293	1	Hinge
30	56315303	2	Retaining, Strap
31	56440213	2	Clamp, Hose SAE #32
32	56315840	1	Duct, Vac Inlet (Nilfisk only)

* = Not Shown

= Revised or new since last update

NOTE 1: Not used after March 2008.

NOTE 2: Drain Hose 56397142 has been replaced by Drain Hose 56601400 in production. When replacing 56397142 you need to order Drain Hose Kit 56601412.



Item	Ref. No.	Qty	Description	Item	Ref. No.	Qty	Description
1	56002959	3	Pin, Cotter Hair NOTE 3 / TSBUS2007-957	23	56315718	1	Weld't, Deck Actuator (24"/BA 625 / 26") NOTE 2
2	56324350	1	Wheel				NOTE 3 / TSBUS2007-957
3	56001879	2	Wsh, Flt SAE 1/2 NOTE 3 / TSBUS2007-957	56315719	1	Weld't, Deck Actuator (28"/BA 725) NOTE 2	
4	56002910	8	Wsh, Flt SAE SS 3/8				NOTE 3 / TSBUS2007-957
5	56002938	7	Wsh, Flt SAE SS 5/16	24	56315275	1	Skirt, Rubber (26")
6	56003120	2	Pin, Cotter Hair .0915 X .375	56315274	1	Skirt, Rubber (24"/BA 625 & 28"/BA 725)	
7	56003335	2	Scr Hex Loc SS 5/16-18 X .88	25	56315754	1	Bumper, Extruded (28"/BA 725) NOTE 4
8	56003438	4	Nut, Hex Nyl Loc SS M10x1.5	56315753	1	Bumper, Extruded (26") NOTE 4	
9	56003472	1	Scr, Soc Shd .38 X 1.00 X 5/16-18	56315752	1	Bumper, Extruded (24"/BA 625) NOTE 4	
10	56003477	6	Scr, Hex Loc SS M8-1x25mm	26	56315339	1	Bracket
11	56003533	4	Scr, Hex Hd SS M10-1.5x20mm	27	56396080	1	Lug, Counterclockwise (30-37)
12#	56003674	8	Scr Hex Loc SS 3/8-24 X .62 (Advance only)	28	56396081	1	Lug, Clockwise (30-37)
13	56003679	2	Pin, Ring .50 X 1.63	29	56397300	1	Tee, Barb NOTE 1
14	56003693	3	Rivet, Nylon Tree Push-In (.218)	30	56002938	3	Wsh, Flt SAE SS 5/16
15	56009107	2	Wsh, Flt SS .378 X 1.000 X .120	31	56003405	3	Nut, Hex Nyl Loc SS M8-1.25
17	56257534	1	Hose, Pvc .375	32	56003436	3	Scr, Hex Hd SS M8-1.25 x 25mm
18#	56314108	2	Hub, Drive	33	56009030	1	Scr, Pan Phil Thd Form 10-24 x .38
19	56315588	1	Scrub Deck, Disc, Cast, 28/BA 725 NOTE 2	34	56009096	1	Wsh, Flt .193 x .875 x .060
	56315587	1	Scrub Deck, Disc, Cast, 26 (Advance only)	35	56407053	2	Thermoid Disk
NOTE 2				36	56314030	1	Brush Holder
	56315586	1	Scrub Deck, Disc, Cast, 24/BA 625 NOTE 2	37	56397081	1	Spring Retainer
20	56315056	2	Asm, Motor And Gear Unit, .42hp (M2 / M3)	38#	56315373	2	Weld't, Deck Mount Brkt NOTE 2
*	56315376	4	Carbon Brush	39#	56002769	4	Nut, Hex Nyl Loc 3/8-16 NOTE 2
*	56397138	4	Brush Spring	40#	56315759	1	Band Clamp (28"/BA 725)
21	56315060	1	Hose, Pvc .375	56315742	1	Band Clamp (24"/BA 625 & 26")	
22	56315161	1	Pin				
				*	56315838	2	Harness, Filter (Nilfisk only)
				*	56413883	2	Ferrite Bead (Nilfisk only)

* = Not Shown

= Revised or new since last update

NOTE 1: The previous solution hose design which consisted of a Reducer (56418669), Hose Clamps (56219932) and a smaller 3/8" diameter Hose (56456830) to the scrub deck has been replaced in production with a single 1/2" diameter hose (56264318). If ordering Tee 56397300 for a machine with this previous design solution hose you will also need to order Solution Hose 56264318. See **NOTE 1** on **SOLUTION SYSTEM / ELECTRICAL-1**.

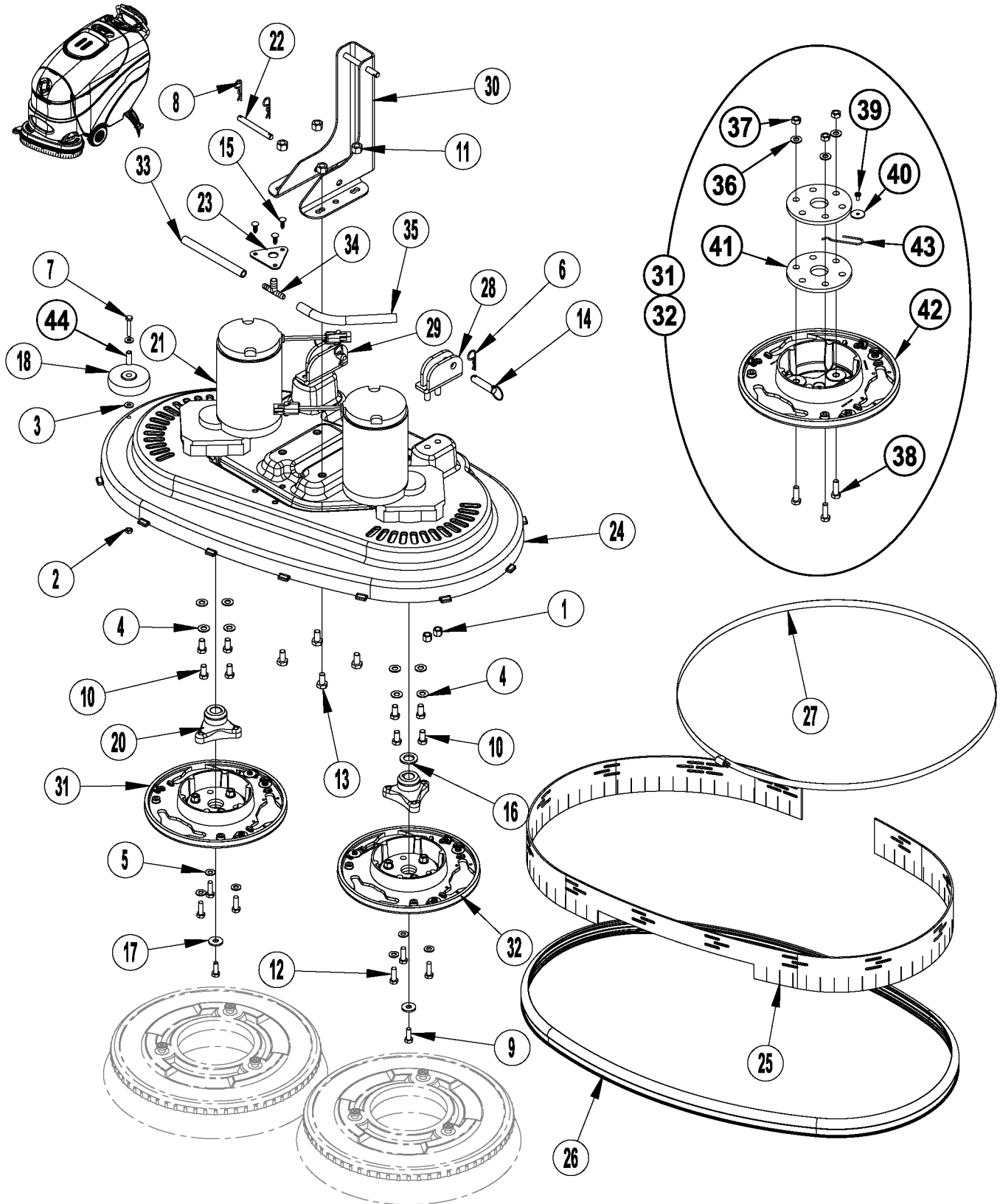
NOTE 2: The Deck Casting (item #19) has been redesigned. The old style castings (56315053 - 28", 56315054 - 26" & 56315055 - 24") are no longer available. If you have a machine built prior to this change (**old style deck assembly DOES NOT include item 38**) and need to replace one of these deck castings you need to order one of the kits listed below. These kits include items (8, 11, 14, 19, 23, 38, 39).

Old Deck	Order Kit
56315053 (28")	56315727
56315054 (26")	56315726
56315055 (24")	56315725

NOTE 3: Actuator Weldment Item #23 has been redesigned to accommodate a new upper deck linkage arm (see **Solution System / Electrical-1 / TSBUS2007-957**). The redesigned weldment is backwards compatible to the previous design. The new design does not use item #3 and the quantity of item #1 is reduced to 2.

NOTE 4: Extruded Bumpers PNs 56315318, 56315277 & 56315276 are obsolete. If you need to replace one of these bumpers please order one of the kits listed below.

Old Bumper	Order Kit
56315318 (28")	56315764
56315277 (26")	56315763
56315276 (24")	56315762



Item	Ref. No.	Qty	Description
1	56002769	4	Nut, Hex Nyl Loc 3/8-16
2	56002850	1	Nut, Hex Nyl Loc-Thin Ss 1/4-20
3	56002859	2	Wsh, Flt Sae Ss 1/4
4	56002910	8	Wsh, Flt Sae Ss 3/8
5	56002938	6	Wsh, Flt Sae Ss 5/16
6	56002959	2	Pin, Cotter Hair
7#	56002880	1	Scr, Hex Loc Ss 1/4-20 X 1.75
8	56003120	2	Pin, Cotter Hair .0915 X .375
9	56003335	2	Scr, Hex Loc Ss 5/16-18 X .88
10	56003338	8	Scr, Hex Loc Ss 3/8-16 X .75
11	56003438	4	Nut, Hex Nyl Loc Ss M10-1.5
12	56003477	6	Scr, Hex Loc Ss M8-1 X 25mm
13	56003533	4	Scr, Hex Ss M10-1.5 X 20mm
14	56003679	2	Pin, Ring .50 X 1.63
15	56003693	3	Rivet, Nylon Tree Push-In (.218)
16	56009022	1	Wsh, Flt .754 X 1.250 X .120
17	56009107	2	Wsh, Flt Ss .378 X 1.000 X .120
18	56049261	1	Wheel
20#	56314108	2	Hub, Drive
21	56315056	2	Asm, Motor And Gear Unit, .42hp (M2 / M3)
*	56315376	4	Carbon Brush
*	56397138	4	Brush Spring
22	56315161	1	Pin
23	56315339	1	Bracket
24	56315859	1	Scrub Deck , Disc, Cast, 32"/BA 825
25	56315626	1	Skirt, Rubber 32"/BA 825
26	56315755	1	Extruded Bumper, 32"/BA 825 Deck
27	56315761	1	Band Clamp, Adjustable
28	56315821	1	Deck Mount Brkt Weldt, Lhs
29	56315823	1	Deck Mount Brkt Weldt, Rhs
30	56315826	1	Bracket Weld't
31	56396080	1	Lug, Counterclockwise (36-43)
32	56396081	1	Lug, Clockwise (36-43)
33	56396195	1	Hose, Pvc .38id X 6.00
34	56397300	1	Tee, Barb
35	56397301	1	Hose, Pvc .375
36	56002938	3	Wsh, Flt SAE SS 5/16
37	56003405	3	Nut, Hex Nyl Loc SS M8-1.25
38	56003436	3	Scr, Hex Hd SS M8-1.25 x 25mm
39	56009030	1	Scr, Pan Phil Thd Form 10-24 x .38
40	56009096	1	Wsh, Flt .193 x .875 x .060
41	56407053	2	Thermoid Disk
42	56314030	1	Brush Holder
43	56397081	1	Spring Retainer
44	56315580	1	Bushing, Stainless
*	56315838	2	Harness, Filter (Nilfisk only)
*	56413883	2	Ferrite Bead (Nilfisk only)

* = Not Shown

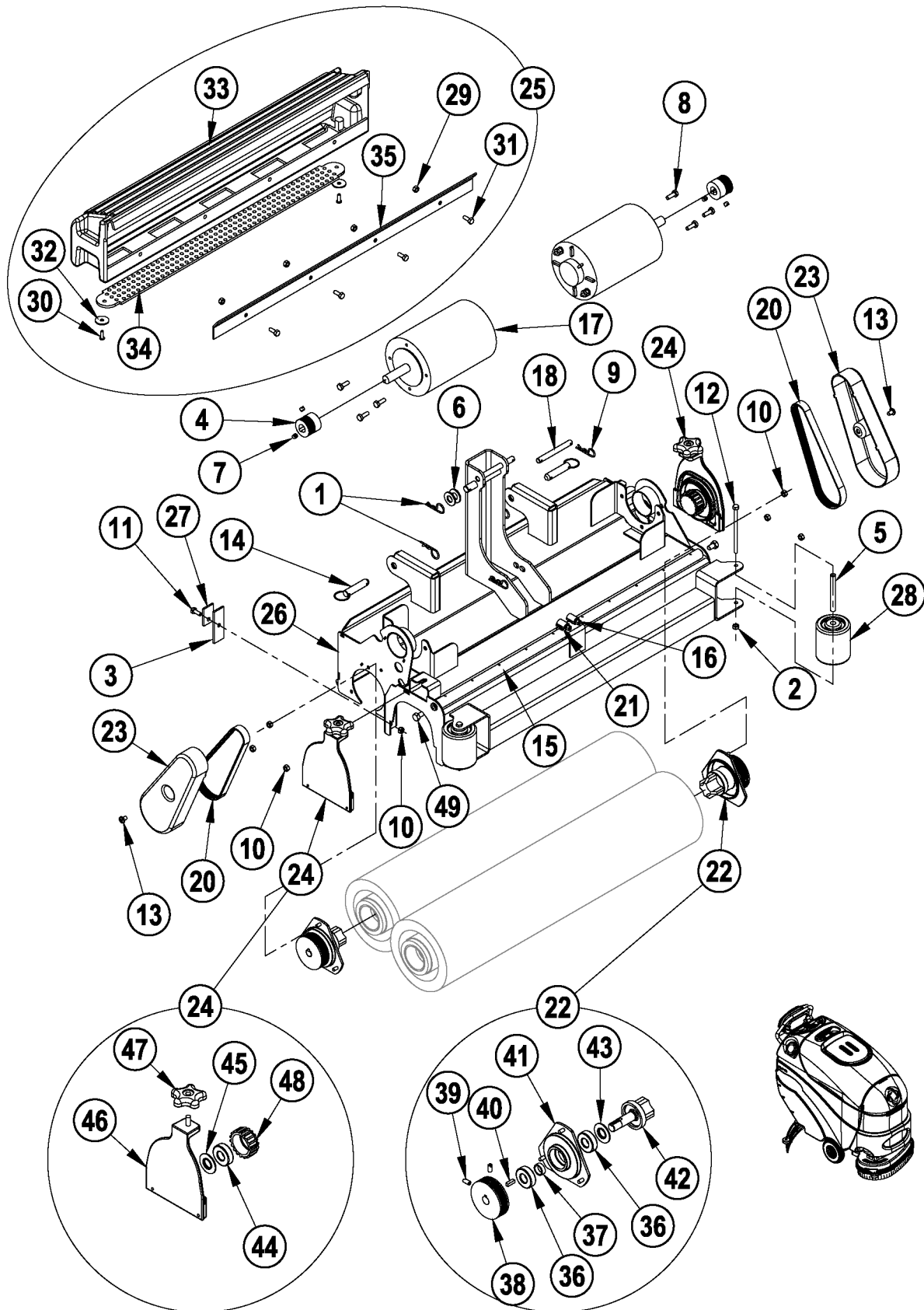
= Revised or new since last update

SCRUB SYSTEM - CYLINDRICAL
Convertamatic™ / BA 625, 725, 825

04-11

07-2

16

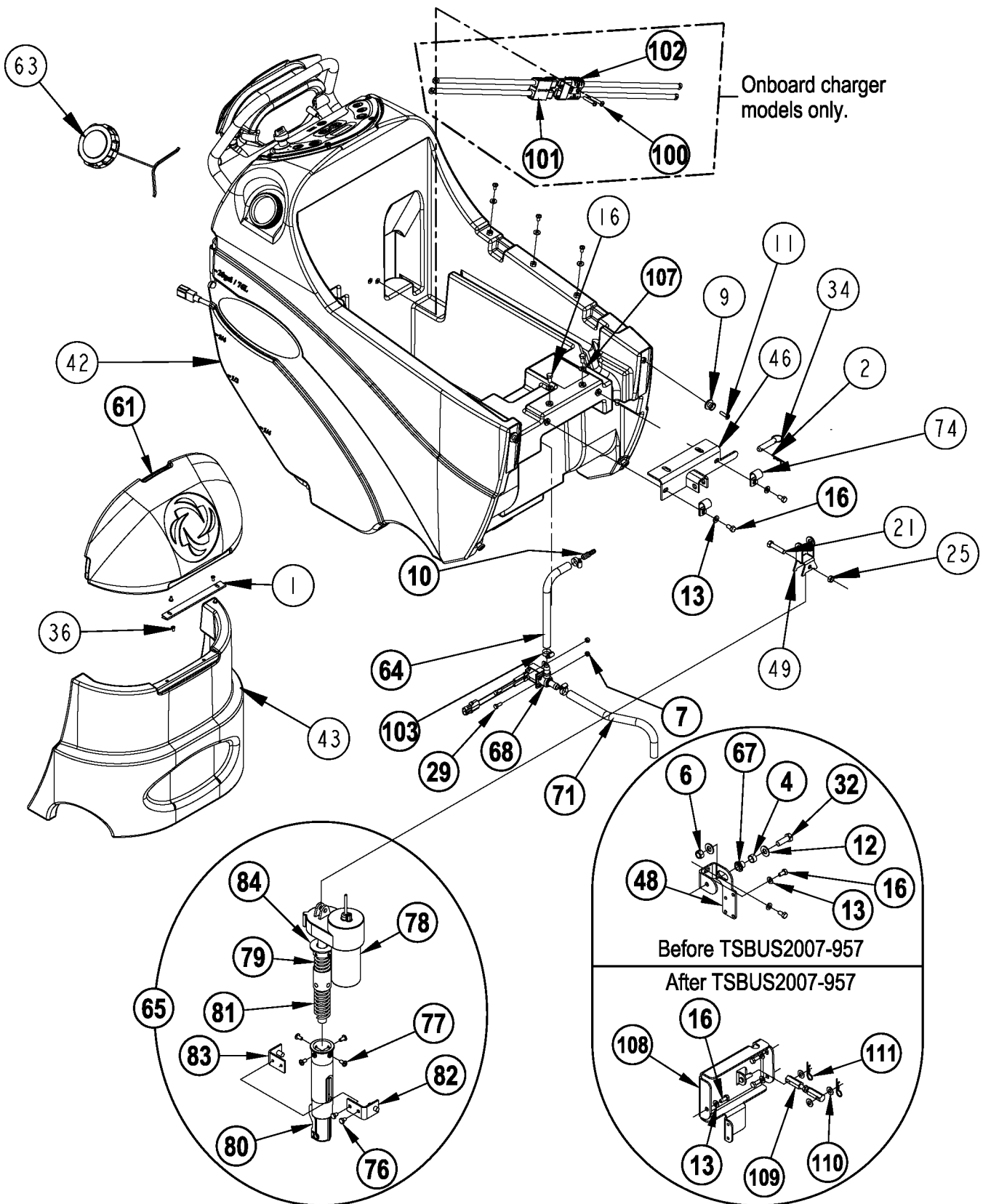


Item	Ref. No.	Qty	Description	Item	Ref. No.	Qty	Description
1	56002959	3	Pin, Cotter Hair NOTE 2 / TSBUS2007-957	27	56410214	2	Strap
2	56003403	2	Nut, Hex Nyl Loc M6-1.00	28	56412459	2	Wheel
3	56407391	2	Blade	29	56003426	4	Nut, Hex Nyl Loc SS M6-1.00
4	56407433	2	Sheave, Poly-V	30	56002896	2	Scr, Pan Phil SS 10-24 x .62
5	56412176	2	Bushing	31	56003431	4	Scr, Hex Hd SS M6-1.00 x 16mm
6	56001879	6	Wsh, Flt SAE 1/2 NOTE 2 / TSBUS2007-957	32	56009060	2	Wsh, Flt SS .260 x 1.00 x .074
7	56002086	4	Scr, Soc Set Loc 5/16-18x.25	33	56315460	1	Hopper (28"/BA 725)
8	56002948	6	Scr, Hex Hd Loc 1/4-20x.75		56315454	1	Hopper (26")
9	56003120	2	Pin, Cotter Hair .0915 X .375		56315401	1	Hopper (24")
10	56003426	8	Nut, Hex Nyl Loc SS M6x1.0	34	56315464	1	Hopper Screen (28"/BA 725)
11	56003431	2	Scr, Hex Hd SS M6-1.0x16mm		56315462	1	Hopper Screen (26")
12	56003492	2	Scr, Hex M6-1.0x95mm		56315319	1	Hopper Screen (24")
13	56003603	2	Scr, Pan Phil Thd Form 1/4-20x.38	35	56315467	1	Hopper Bracket (28"/BA 725)
14	56003679	2	Pin, Ring .50 X 1.63		56315466	1	Hopper Bracket (26")
15	56315355	2	Manifold, PVC (28"/BA 725)		56315465	1	Hopper Bracket (24")
	56315354	2	Manifold, PVC (26")	36	56106070	2	Bearing, Ball
	56315353	2	Manifold, PVC (24")	37	56407389	1	Spacer
16	56112771	2	Clamp, Hose SAE #10	38	56407442	1	Sheave, Poly-V
17	56315061	2	Motor, 24 Vdc, .5 Hp, 1800 RPM (M2 / M3)	39	56002119	2	Scr, Soc Set Loc 1/4-20 x .50
*	56412287	1	Brush / Spring Kit	40	56003237	1	Key, Sq. .19 x .62
18	56315161	1	Pin	41	56315405	1	Bearing Plate
19	56315320	2	Harness, Brush	42	56407557	1	Spindle
20	56315321	2	Belt, Auto Tension	43	56407558	1	Washer, Bearing
21	56262549	1	Tee, Barb NOTE 1	44	56106070	1	Bearing, Ball
22	56315408	2	Drive End Assy (#36-43)	45	56407558	1	Washer, Bearing
23	56315445	2	Cover, Belt	46	56315447	1	Idler Bearing Plate
24	56315448	2	Idler End Assy (#44-48)	47	56396254	1	Knob
25	56315459	1	Hopper Assembly (28"/BA 725 / #29-35)	48	56407551	1	Hub
	56315453	1	Hopper Assembly (26" / #29-35)				
	56315403	1	Hopper Assembly (24" / #29-35)	*	56315838	2	Harness, Filter (Nilfisk only)
26	56315470	1	Housing, Weld't (28"/BA 725)				
	56315469	1	Housing, Weld't (26")				
	56315468	1	Housing, Weld't (24")				

* = Not Shown

NOTE 1: The previous solution hose design which consisted of a Reducer (56418669), Hose Clamps (56219932) and a smaller 3/8" diameter Hose (56456830) to the scrub deck has been replaced in production with a single 1/2" diameter hose (56264318). If ordering Tee 56262549 for a machine with this previous design solution hose you will also need to order Solution Hose 56264318. See **NOTE 1** on **SOLUTION SYSTEM / ELECTRICAL-1**.

NOTE 2: Housing Weldment Item #26 has been redesigned to accommodate a new upper deck linkage arm (see **Solution System / Electrical-1 / TSBUS2007-957**). The redesigned weldment is backwards compatible to the previous design. On machines with the new design the quantity of item #1 is reduced to 2 and the quantity of item #6 is reduced to 4.

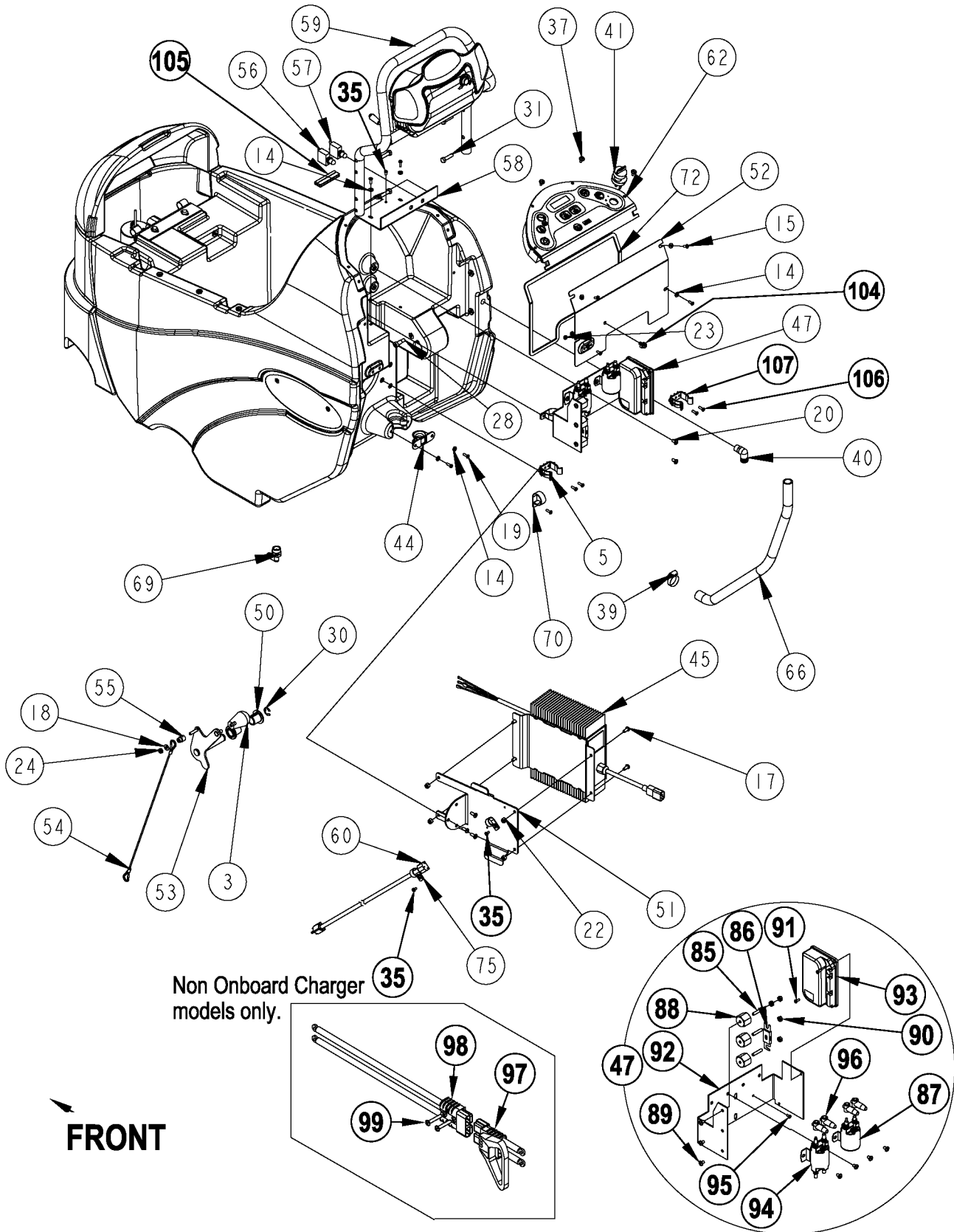


Item	Ref. No.	Qty	Description
1	56315285	1	Hinge
2	56002959	1	Pin, Cotter Hair
4	56370878	1	Bearing, Sleeve only used before TSBUS2007-957
6	56003312	1	Nut, Hex Nyl Loc M12-1.75 only used before TSBUS2007-957
7	56003403	2	Nut, Hex Nyl Loc M6-1.00
8#			Deleted Intentionally
9	56365777	4	Lug, Brush Driver
10	56418669	1	Reducer, Barb
11	56001832	4	Scr, Flt Phil 1/4-20x1.00
12	56001879	2	Wsh, Flt SAE 1/2
13	56001939	4	Wsh, Flt SAE 5/16 QTY of 5 after TSBUS2007-957
16	56002667	6	Scr, Hex Hd 5/16-18x.75 QTY of 7 after TSBUS2007-957
21	56002684	1	Scr, Hex Hd 3/8-16x1.75
25	56002841	1	Nut, Hex Nyl Loc-Thin 3/8-16
26#			Deleted Intentionally
27#			Deleted Intentionally
29	56003174	2	Scr Hex Thd To Hd M6-1.0x16mm
32	56003637	1	Scr, Hex M12-1.75x40mm only used before TSBUS2007-957
33#			Deleted Intentionally
34	56003679	1	Pin, Ring .50 X 1.63
36	56009139	4	Scr, Pan Phil Loc 10-24x.38
38#			Deleted Intentionally
42	56315089	1	Tank, Solution
43	56315104	1	Nose Cone, 24-26 Commercial
46	56315130	1	Weldment, Actuator Mount
48#	56315186	1	Bracket, Linkage Pivot (Advance only) only used before TSBUS2007-957
49	56315191	1	Yoke, Actuator
61	56315284	1	Cover, Chemical Bottle
63#	56109519	1	Cap, Raw W/Tether NOTE 2
64	56387302	1	Spiral, Hose X .500
65	56396049	1	Lift Actuator Assembly (76-84)
67	56315380	1	Bushing only used before TSBUS2007-957
68	56397203	1	Solenoid Valve Assy. (L1)
71	56264318	1	Hose, Spiral .500 NOTE 1
74	56469380	2	Clamp, P
76	56009019	2	Scr, Hex Thd Form 1/4-20 X .38
77	56009062	4	Scr, Pan Phil Thd Form 1/4-20 X .50
78	56393303	1	Actuator, Motor (M5)
79	56412071	1	Compression Spring
80	56412262	1	Housing, Spring
81	56420018	1	Compression Spring
82	56420019	1	Nut Retainer
83	56420020	1	Nut Retainer
84	56396268	1	Spring Housing Guide
100	56002786	2	Scr, Pan Phil 1/4-20 x 1.50 (onboard charger only)
101	56397188	1	Connector Assy (connected to batteries / onboard charger only)
102	56397187	1	Connector Assy (connected to machine / onboard charger only)
103	56219932	3	Clamp, Hose SAE #6
107	56009122	2	Wsh, Flt .344 x .938 x .125
108	56315839	1	Bracket Weld't only used after TSBUS2007-957
109	56315836	1	Turnbuckle Assy only used after TSBUS2007-957
110	56002063	3	Wsh, Flt SAE 3/8 only used after TSBUS2007-957
111	56003120	2	Pin, Cotter Hair .0915 x .375 only used after TSBUS2007-957

= Revised or new since last update

NOTE 1: The previous solution hose design which consisted of a Reducer (56418669), Hose Clamps (56219932) and a smaller 3/8" diameter Hose (56456830) to the scrub deck has been replaced in production with a single 1/2" diameter hose (56264318). If ordering this new hose (56264318) for a machine with the previous design you will also need to order a new Tee (56397300 for disc / 56262549 for cylindrical) for the scrub deck. See **NOTE 1** on **SCRUB SYSTEM – DISK (24"/BA 625, 26", 28"/BA 725)** and **SCRUB SYSTEM – CYLINDRICAL**.

NOTE 2: The previous Solution Tank Cap 56315517 is obsolete. The new Cap 56109519 can be used in place of the original.



Item	Ref. No.	Qty	Description	Item	Ref. No.	Qty	Description
3	56364527	1	Knob	55	56315245	1	Bushing, Squeegee Cable
5#	56407361	1	Clamp, Plastic	56	56315255	1	Circuit Breaker, 5 Amp
14	56001954	8	Wsh, Flt SAE #10	57	56315256	1	Circuit Breaker, 30 Amp
15	56001993	4	Scr, Pan Phil 10-24x.50	58	56315259	1	Plate, Circuit Breaker
17	56002066	7	Scr, Pan Phil 1/4-20x.62 (Onboard Charger Only)	59	56315266	1	Assembly, Paddle TSBUS2005-898
18	56002098	4	Wsh, Flt SAE 1/4	60	56315270	1	Charger Cord, Us (Onboard Charger Only)
19	56002124	12	Scr, Pan Phil 10-24x.62	62#	56315297	1	Control Panel Assy (A1) NOTE 1 (Advance only)
20	56002145	5	Scr, Pan Phil 1/4-20x.50	#	56315777	1	Control Panel Assy (A1) NOTE 2
22	56002708	4	Nut, Hex Nyl Loc 1/4-20 (Onboard Charger Only)	66	56396143	1	Hose, Pvc
23	56002832	2	Nut, Hex Nyl Loc-Thin 10-24	69	56409152	1	Barb, 90 Elbow 1/2 X 1/2npt
24	56002840	1	Nut, Hex Nyl Loc-Thin 1/4-20	70	56410166	2	Clamp, P
28	56002962	1	Scr, Soc Shd .38 X .62 X 5/16-18	72	56412285	1	Gasket, Elect. Cover
30	56003266	1	Ring, Ret Ext Type E 0.75 Dia	75	56486112	2	Clamp, P (Onboard Charger Only)
31	56002094	4	Scr, Hex Hd 5/16-18x1.50	85	56009203	3	Stud, 1/4-20
35	56009030	3	Scr, Pan Phil Thd Form 10-24x.38 (Qty of 1 on Non-Onboard Charger models)	86	56412089	1	Fuse, 150 Amp (F1)
37	56009206	4	Scr, Truss Phil-Blk 10-24x.50	87	56412179	1	Contactora, 24 Vdc (K2 / Vac Motor)
39	56244969	1	Clamp, Hose SAE #12	88	56469858	3	Standoff, Insulated
40	56264442	1	Barb, 90 Ebow 3/4 X 3/8npt	89	56002462	7	Scr, Pan Phil 1/4-20x.38
41	56303553	1	Key Switch Assembly	90	56002561	4	Nut, Hex W/ Shprf 1/4-20
*	56303526	A/R	Set of 2 Replacement Keys	91	56003698	2	Scr, Pan Phil Thd Form 8-32 x .75
44	56315121	1	Guide, Cable	92	56315182	1	Panel, Electrical
45	56315124	1	Charger, On-Board 24V NOTE 3 TSBUS2006-931	93	56315294	1	Speed Control (A2)
*	56315747	1	Thermistor Repair Kit for 56315124	94	56397088	1	Contactora, 24v Spdt (K1 / Brush Motor)
47	56315162	1	Assy, Electrical Box (85-96) TSBUS2005-897 TSBUS2006-926	95	56009030	1	Scr, Pan Phil Thd Form 10-24x.38
50	56315193	2	Bushing, Flange	96	56409538	4	Insulator, Terminal
51	56315206	1	Bracket, Charger (Onboard Charger Only)	97	56315345	1	Connector Assy (connected to batteries) (non onboard charger only)
52	56315222	1	Panel, Electrical	98	56397187	1	Connector Assy (connected to machine) (non onboard charger only)
53	56315236	1	Weldment, Squeegee Lift	99	56002825	2	Scr, Pan Phil 1/4-20 x 1.25 (non onboard charger only)
54	56315243	1	Cable Assy	104	56315382	1	Clip, Conduit
				105	56315532	1	Gasket
				106	56001993	2	Scr, Pan Phil 10-24 x .50
				107#	56212236	1	Clamp, Plastic

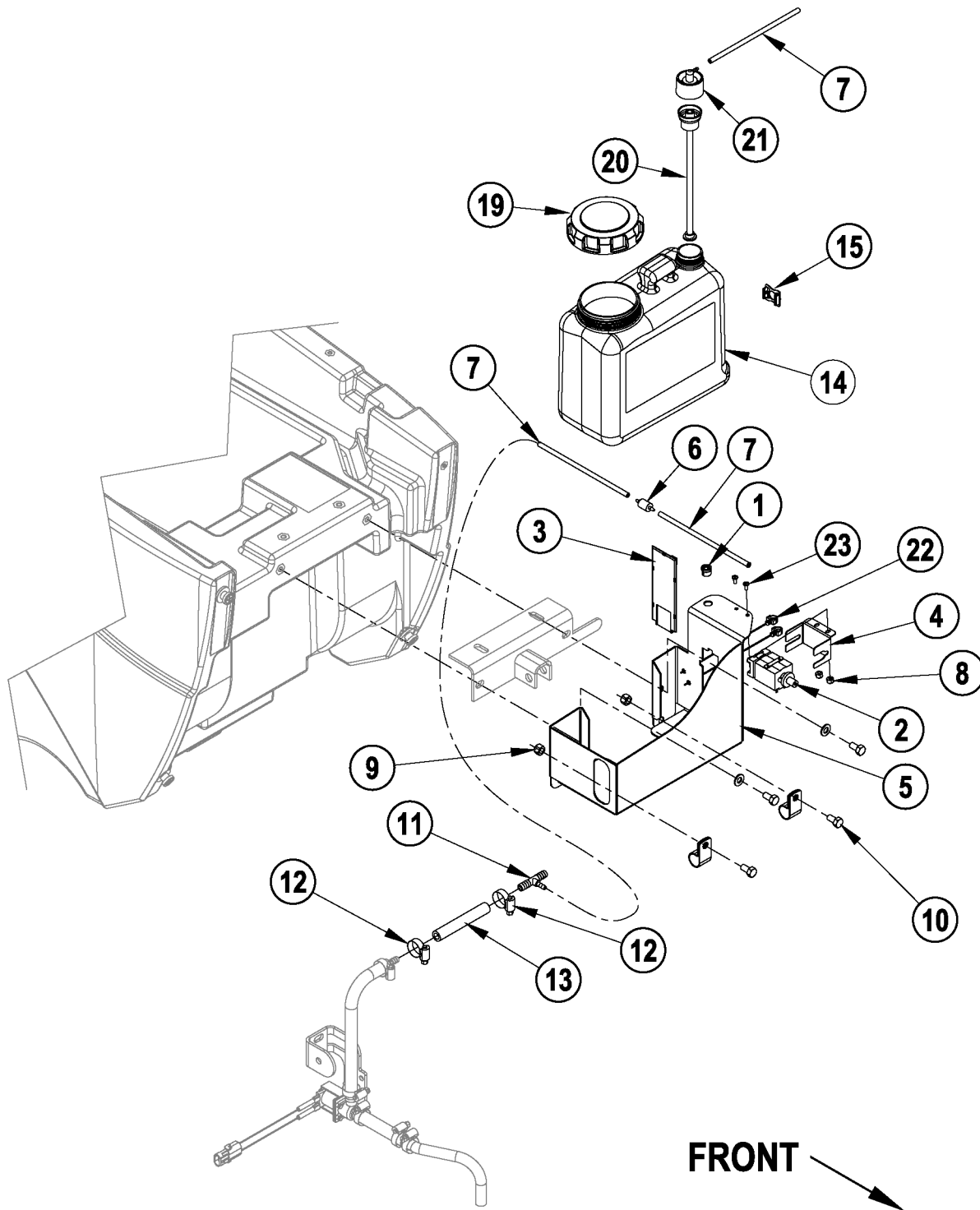
* = Not Shown

= Revised or new since last update

NOTE 1: Order this control panel assy if you have the "Old Pump" voltage reading across the solution pump **(M7)** leads.**NOTE 2:** Order this control panel assy if you have the "New Pump" voltage reading across the solution pump **(M7)** leads.

	Voltage
Regular Scrub	
Old Pump	7
New Pump	9.56
Heavy Scrub	
Old Pump	11.3
New Pump	13.7
Extreme Scrub	
Old Pump	17
New Pump	19.24

NOTE 3: Starting with Charger serial # CP240548022382 the charger software can be programmed with a computer and the QuiQ Programmer kit 56315732. The On-Board Charger is only available as a field kit (56315846) on Nilfisk models.



Item	Ref. No.	Qty	Description
	56315501	1	Chemical Tank Assy (1-8 & 22-23) NOTE 1
1	56003699	1	Bushing, 1/4 ID Snub
2	56315241	1	Pump, Chemical
3	56315340	1	Circuit Board Assy
4	56315476	1	Bracket, Chemical Pump
5	56315515	1	Bracket, Tank Mounting
6	56315522	1	Check Valve, 1/8 Barb, 125PSI
7	56315524	3	Hose, Chemical Resistant, 7"
8	56002877	2	Nut, Hex Nyl Loc SS 8-32
9	56002701	2	Nut, Hex Nyl Loc 5/16-18
10	56002035	2	Scr, Hex Hd 5/16-18 x .62
11	56315265	1	Tee, Barb
12	56219932	2	Clamp, Hose SAE #6
13	56412187	1	Hose, .38 Spiral
14	56315502	1	Chemical Bottle As
**	56315535	A/R	AXP Neutral Cleaner, 4 pack
**	56315537	A/R	AXP Heavy Duty Cleaner & Degreaser, 4 pack
**#	56315503	A/R	Chemical Bottle Assy (14, 19, 20, 21)
15	56315511	1	Indicator Assy
19	56315517	1	Cap
20	56315527	1	Insert, Dry Break
21	56315523	1	Cap, Dry Break, 1/8 Barb, 90°
22	56315382	2	Clip, Conduit
23	56003018	2	Scr, Pan Phil SS 8-32 x .38

** = Optional, Not Included

= Revised or new since last update

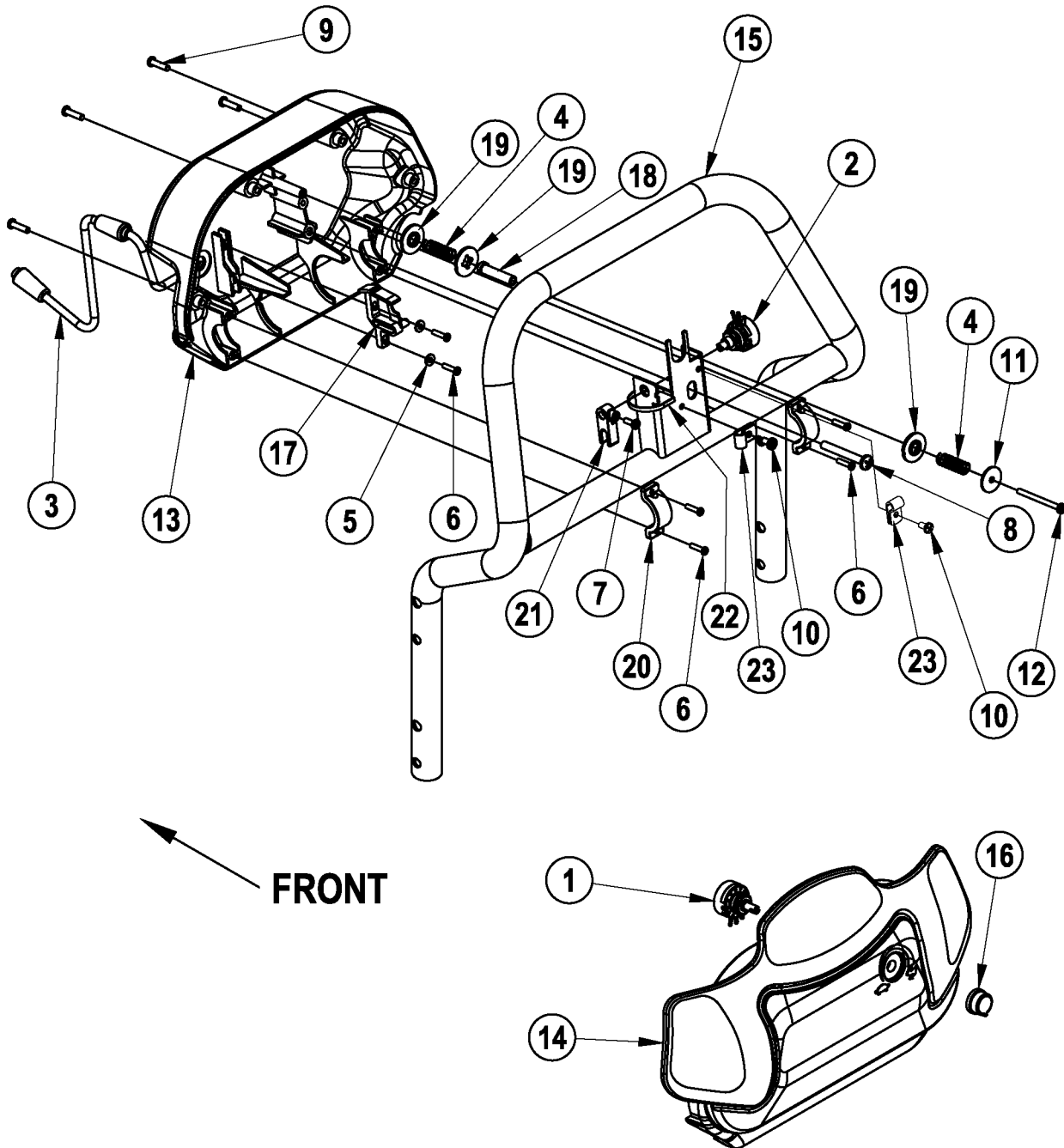
NOTE 1: The Chemical Assembly is only available as a field kit on Nilfisk models.

PADDLE ASSEMBLY
Convertamatic™ / BA 625, 725, 825

04-11

24

05-5



04-11

PADDLE ASSEMBLY

06-8

Convertamatic™ / BA 625, 725, 825**25**

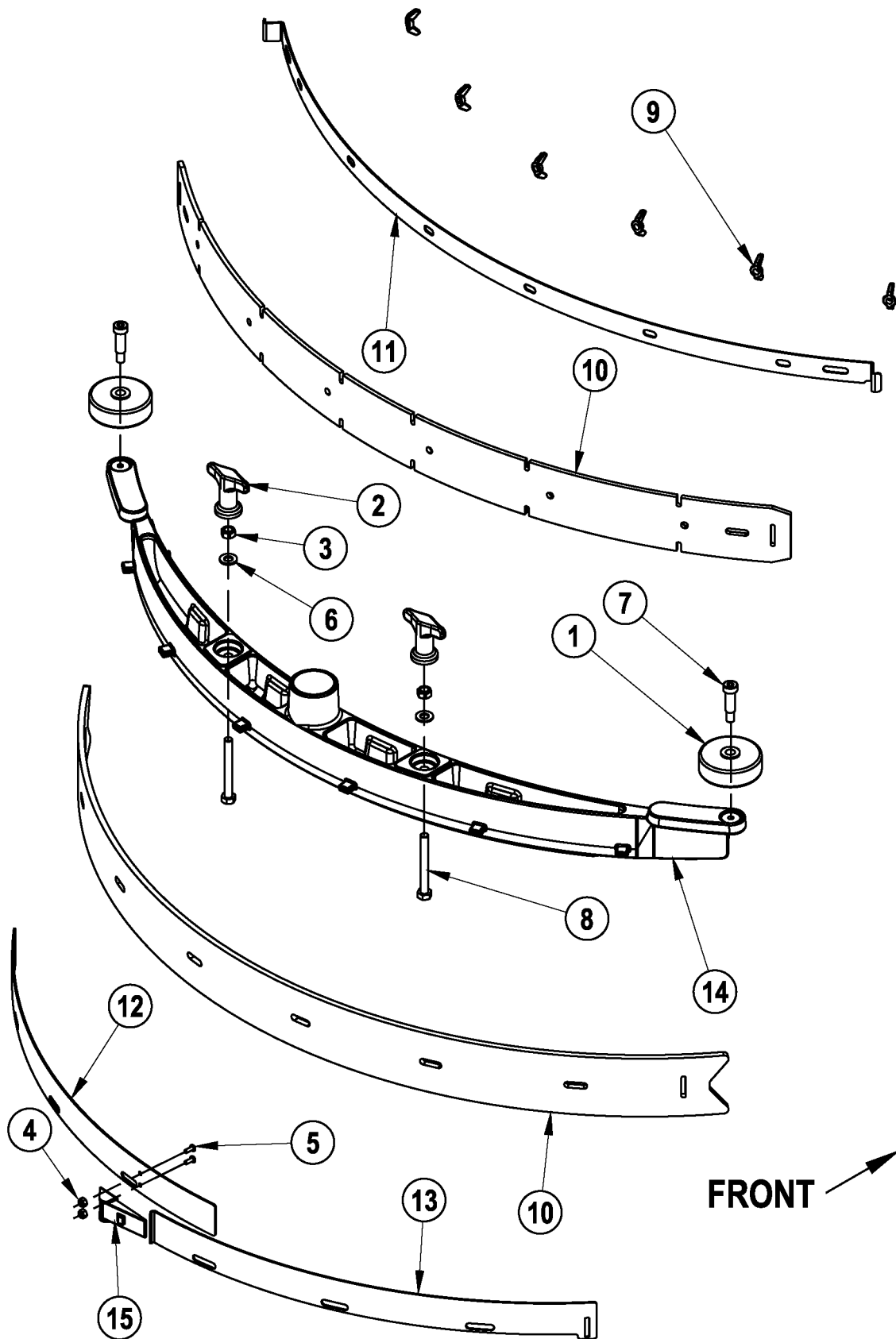
Item	Ref. No.	Qty	Description
	56315266	1	Assembly, Paddle TSBUS2005-898 / TSBUS2006-925
1	56396197	1	Potentiometer, 100k (R2)
2	56397029	1	Potentiometer, 5k (R1)
3	56315231	1	Harness, Handle
4	56325654	2	Spring, Compression
5	56002006	2	Wsh, Flt SAE #6
6	56003197	6	Scr, Pan Phil Plastite 6-18x.62
7	56003354	1	Scr, Pan Phil M4 X 12
8	56003527	1	Scr, Pan Phil Plastite 1/4-10x2.00
9	56003545	4	Scr, Pan Phil Plastite 8-10x.75
10	56009030	2	Scr, Pan Phil Thd Form 10-24x.38
11	56009096	1	Wsh, Flt .193 X .875 X .060
12	56009287	1	Scr, Pan Phil Type B 8x2.00
13	56315229	1	Paddle, Back Cover
14	56315230	1	Paddle, Front Cover
15	56315251	1	Weldment, Handle Bar
16	56315280	1	Knob
17	56397015	1	Cam Controller
18	56397109	1	Sleeve
19	56397170	3	Washer, Plastic
20	56397171	2	Clamp
21	56397172	1	Potentiometer Fork
22	56478246	1	Tie, Cable
23	56481890	2	Clamp, P

SQUEEGEE ASSEMBLY

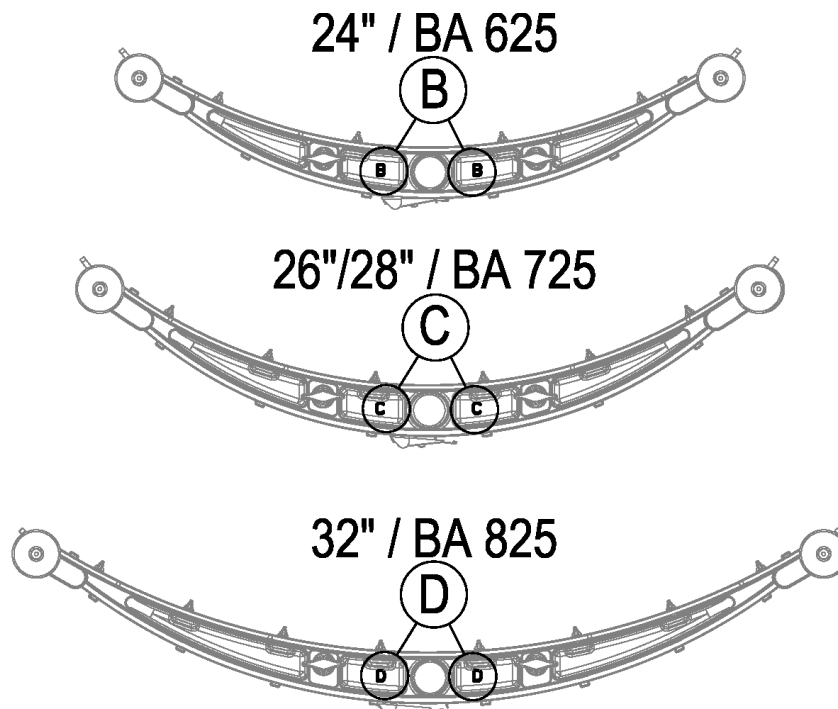
04-11

26

Convertamatic™ / BA 625, 725, 825



Item	Ref. No.	Qty	Description	Item	Ref. No.	Qty	Description
	56315291	1	Squeegee Assembly "B" (24"/BA 625)				24"/BA 625 Squeegee Blade Kits
	56315290	1	Squeegee Assembly "C" (26" & 28"/BA 725)	**	56315347	1	Kit, Gum Rubber Squeegee Blade NOTE 1
	56315632	1	Squeegee Assembly "D" (32"/BA 825)	**	56315351	1	Kit, Linatex Squeegee Blade NOTE 1
1	56324350	2	Wheel	**	56314305	1	Kit, Neoprene Squeegee Blade NOTE 1
2	56370711	2	Nut, Thumb	**	56315854	1	Kit, Squeegee Blade PU B NOTE 1
3#	56002851	2	Nut, Hex Nyl Loc-Thin SS 5/16-18 (Advance only)				26" & 28"/BA 725 Squeegee Blade Kits
4#	56002907	2	Nut, Hex Nyl Loc SS 6-32 (Advance only)	**	56315348	1	Kit, Gum Rubber Squeegee Blade NOTE 1
5	56002909	2	Scr, Pan Phil SS 6-32x.38	**	56315352	1	Kit, Linatex Squeegee Blade NOTE 1
6	56002938	2	Wsh, Flt SAE SS 5/16	**	56314062	1	Kit, Neoprene Squeegee Blade NOTE 1
7	56003472	2	Scr, Soc Shd .38 X 1.00 X 5/16-18	**	56315855	1	Kit, Squeegee Blade PU C NOTE 1
8	56003736	2	Scr, Hex Thd to Hd SS 5/16-18 x 3.00				32"/BA 825 Squeegee Blade Kits
9	56009111	6	Nut, Wing SS 1/4-20	**	56315674	1	Kit, Gum Rubber Squeegee Blade NOTE 1
10	56315347	1	Squeegee Blade kit (24"/BA 625) NOTE 1	**	56314865	1	Kit, Linatex Squeegee Blade NOTE 1
	56315348	1	Squeegee Blade kit (26" & 28"/BA 725) NOTE 1	**	56314843	1	Kit, Neoprene Squeegee Blade NOTE 1
	56315674	1	Squeegee Blade kit (32"/BA 825) NOTE 1	**	56315856	1	Kit, Squeegee Blade PU D NOTE 1
11	56314028	1	Strap, Front "B" (24"/BA 625)				** = Optional, Not Included
	56314322	1	Strap, Front "C" (26" & 28"/BA 725)				# = Revised or new since last update
	56314696	1	Strap, Front "D" (32"/BA 825)				NOTE 1: All squeegee blade kits include both front and rear squeegee blades.
12	56314026	1	Strap, Left Rear "B" (24"/BA 625)				
	56314323	1	Strap, Left Rear "C" (26" & 28"/BA 725)				
	56314691	1	Strap, Left Rear "D" (32"/BA 825)				
13	56314027	1	Strap, Right Rear "B" (24"/BA 625)				
	56314324	1	Strap, Right Rear "C" (26" & 28"/BA 725)				
	56314692	1	Strap, Right Rear "D" (32"/BA 825)				
14	56314271	1	Squeegee Tool, Cast "B" (24"/BA 625)				
	56314325	1	Squeegee Tool, Cast "C" (26" & 28"/BA 725)				
	56314694	1	Squeegee Tool, Cast "D" (32"/BA 825)				
15	56471194	1	Latch Assembly				



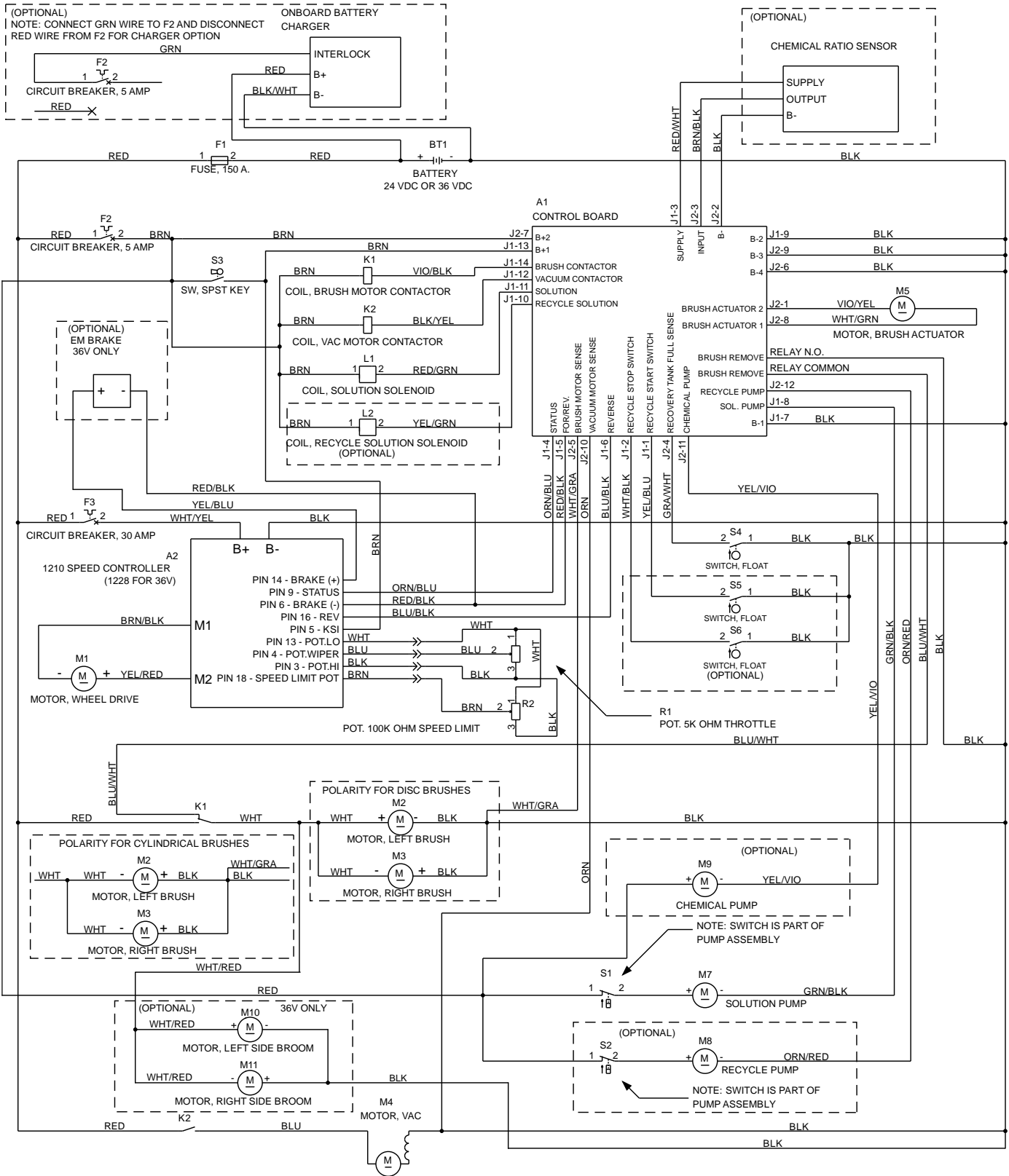
WIRING DIAGRAM

04-11

28

Convertamatic™ / BA 625, 725, 825

05-4



Item	Ref. No.	Qty	Description
A1#	56315297	1	Control Panel Assy (A1) NOTE 1 (Advance only)
#	56315777	1	Control Panel Assy (A1) NOTE 2
A2	56315294	1	Speed Control
BT1	NA	4	Battery
F1	56412089	1	Fuse, 150 Amp
F2	56315255	1	Circuit Breaker, 5 Amp
F3	56315256	1	Circuit Breaker, 30 Amp
K1	56397088	1	Contactora, Brush Motor
K2	56412179	1	Contactora, Vac Motor
L1	56397203	1	Solenoid, Solution
L2	56397203	1	Solenoid, Recycle Solution (Optional)
M1	56315062	1	Transaxle, 24v
*	56315377	1	Motor
*	56315378	4	Carbon Brush
*	56315379	2	Neoprene Mounting Sleeve
M2	56315056	1	Motor, Left Brush (Disk)
*	56315376	4	Carbon Brush
*	56397138	4	Brush Spring
	56315061	1	Motor, Left Brush (Cylindrical)
*	56412287	1	Brush / Spring Kit
M3	56315056	1	Motor, Right Brush (Disk)
*	56315376	4	Carbon Brush
*	56397138	4	Brush Spring
	56315061	1	Motor, Left Brush (Cylindrical)
*	56412287	1	Brush / Spring Kit
M4#	56412218	1	Motor, Vac (Advance only)
#	56412300	1	Motor, Vac (Nilfisk only)
*	56397098	1	Carbon Brush Set of 2
M5	56393303	1	Motor, Brush Actuator
M6	56315241	1	Pump, Chemical (Optional)
M7	56315108	1	Pump, Solution
M8	56315132	1	Pump, Recycle (Optional)
R1	56397029	1	Potentiometer, 5K Ohm, Throttle
R2	56396197	1	Potentiometer, 100K Ohm, Speed Limit
S1	NA	1	Part of M7
S2	NA	1	Part of M8
S3	56303553	1	Switch, Key
*	56303526	A/R	Set of 2 Replacement Keys
S4	56315096	1	Switch, Float
S5	56315096	1	Switch, Float (Optional / Recycle Start)
S6	56315096	1	Switch, Float (Optional / Recycle Stop)
*	56315124	1	Charger, Onboard 24V (Onboard Charger Models Only) NOTE 3 TSBUS2006-931
*	56315747	1	Thermistor Repair Kit for 56315124
*	56315340	1	Chemical Ratio Sensor (Chemical Models Only)
*	56315249	1	Harness, Main TSBUS2006-926 / TSBUS2007-955
*	56315751	1	Vacuum Harness TSBUS2007-955
*	56416445	3	Cable Assy 4 AWG (Battery Cables)
*	56372673	8	Boot, Battery Post
*	56478523	2	Tie, Cable
*	56478246	9	Tie, Cable
*	56314119	1	Spacer, Battery
*	56315838	2	Harness, Filter (Nilfisk only)
*	56413883	2	Ferrite Bead Nilfisk Disk models only

* = Not Shown

= Revised or new since last update

NOTE 1: Order this control panel assy if you have the "Old Pump" voltage reading across the solution pump (M7) leads.**NOTE 2:** Order this control panel assy if you have the "New Pump" voltage reading across the solution pump (M7) leads.

	Voltage
Regular Scrub	
Old Pump	7
New Pump	9.56
Heavy Scrub	
Old Pump	11.3
New Pump	13.7
Extreme Scrub	
Old Pump	17
New Pump	19.24

NOTE 3: Starting with Charger serial # CP240548022382 the charger software can be programmed with a computer and the QuiQ Programmer kit 56315732. **The On-Board Charger is only available as a field kit (56315846) on Nilfisk models**

OPTIONAL KITS AND ACCESSORIES

04-11

30

Convertamatic™ / BA 625, 725, 825

08-4

Ref. No.	Qty	Description	Ref. No.	Qty	Description
Common Kits			Common Accessories		
**	56315168	1 Extended Scrub Kit	**	56315316	A/R Tote Bag
**	56315312	1 Squeegee Wand Kit	**	56409441	A/R Programmer, 1307 User
**#	56315732	1 QuiQ Programmer Kit NOTE 2 TSBUS2007-979	**	56409823	A/R Programmer Cable
Advance Only Kits			Advance Only Accessories		
**	56315322	A/R Kit, 24" Disk Deck Assy	**	56397453	6 Indicator, Battery Level (1 per battery)
**	56315323	A/R Kit, 26" Disk Deck Assy	**#	56044331	A/R Convertamatic Literature Pack
**	56315324	A/R Kit, 28" Disk Deck Assy	Nilfisk Only Accessories		
**	56315864	A/R Kit, 32" Disk Deck Assy	**#	56044403	A/R BA 625, 725, 825 Literature Pack
**	56315325	A/R Kit, 24" Cyl Deck Assy	Advance Optional Batteries		
**	56315326	A/R Kit, 26" Cyl Deck Assy	**	56206987	4 Battery, 6V 180AH Gel
**	56315327	A/R Kit, 28" Cyl Deck Assy	**	56206117	4 Battery, 6V 195AH Wet
Nilfisk Only Kits			**	56206079	4 Battery, 6V 235AH Wet
**	56315860	A/R Kit, BA625 Disk Deck W/Squeegee	**#	56315772	4 Battery, 6V 255AH AGM
**	56315861	A/R Kit, BA725 Disk Deck W/Squeegee	Advance Optional Battery Chargers		
**	56315863	A/R Kit, BA825 Disk Deck W/Squeegee	**	56388109	A/R Charger, 24V 25A 110V
**	56315862	A/R Kit, BA725 Cyl Deck W/Squeegee	Nilfisk Optional Batteries		
**	56315845	1 EDS On-Board Chemical Kit	**#	80567300	1 Battery, Complete 24v 174 A/H (set of 4)
**	56315846	1 On-Board Charger kit-EU	**#	80566500	1 Battery, Complete 24v 180 A/H (set of 4)
24"/BA 625 Squeegee Blade Kits			**#	80564500	4 Battery, 6v 174 A/H
**	56315347	1 Kit, Gum Rubber Squeegee Blade NOTE 1	**#	80564000	4 Battery, 6v 180 A/H
**	56315351	1 Kit, Linatex Squeegee Blade NOTE 1	Nilfisk Optional Battery Chargers		
**	56314305	1 Kit, Neoprene Squeegee Blade NOTE 1	**#	80568700	1 Charger, 24vdc, 20 Amp, 230vac (UK)
**	56315854	1 Kit, Squeegee Blade PU B NOTE 1	**#	80568400	1 Charger, 24vdc, 20 Amp, 230vac (EU)
26" & 28"/BA 725 Squeegee Blade Kits			* = Not Shown		
**	56315348	1 Kit, Gum Rubber Squeegee Blade NOTE 1	** = Optional, Not Included		
**	56315352	1 Kit, Linatex Squeegee Blade NOTE 1	# = Revised or new since last update		
**	56314062	1 Kit, Neoprene Squeegee Blade NOTE 1			
**	56315855	1 Kit, Squeegee Blade PU C NOTE 1			
32"/BA 825 Squeegee Blade Kits					
**	56315674	1 Kit, Gum Rubber Squeegee Blade NOTE 1			
**	56314865	1 Kit, Linatex Squeegee Blade NOTE 1			
**	56314843	1 Kit, Neoprene Squeegee Blade NOTE 1			
**	56315856	1 Kit, Squeegee Blade PU D NOTE 1			

NOTE 1: All squeegee blade kits include both front and rear squeegee blades.

NOTE 2: Starting with Charger serial # CP240548022382 the charger software can be programmed with a computer and the QuiQ Programmer kit 56315732.

We provide brushes and pad holders that will give you the best possible performance between machine and floor. Following are descriptions of the materials and their applications.

Union Mix:	Medium grade natural fibers for polishing finished floors with standard-speed equipment. Recommended for use in place of white pads.
ProLite:	Bristles are made from light-duty polypropylene for general scrubbing when you do not want to scratch or remove finish from the floor. Recommended for use in place of red pads.
Prolene:	Polypropylene material for medium-duty scrubbing on concrete, terrazzo and vinyl floor tile. Recommended for use in place of green or blue pads.
Magna Grit:	For extreme heavy-duty scrubbing or stripping of floors. This brush has extra large diameter silicon carbide grit impregnated synthetic bristles. Recommended for use in place of black pads.
Dyna Grit:	For aggressive, heavy-duty scrubbing or stripping of floors. Recommended for use in place of brown pads.
MidLite Grit:	For general purpose scrubbing of sealed or unsealed concrete, stone, terrazzo, quarry tile and other resilient hard floor surfaces. Recommended for use in place of green or blue pads.
MidGrit:	For general purpose scrubbing when you need a lighter action for sealed or unsealed concrete, stone, terrazzo, quarry tile and other resilient hard floor surfaces. Recommended for use in place of green or blue pads.
AgLite Grit:	For light scrubbing when used wet; buffing or polishing when used dry on urethane coated, sealed concrete or other resilient hard surface floors. Recommended for use in place of red or white pads.
Short Trim Pad Holder:	Made with a structural foam block and center ring for correct pad centering. It has a "shower feed" design for getting solution to the floor.

24"/BA 625 BRUSHES

56505750 - Short Trim Pad Holder
 56505195 - Pad Retainer for 56505750
 56505751 - MagnaGrit
 56505752 - DynaGrit
 56505753 - AgLite
 56505754 - Prolene
 56505755 - ProLite
 56505756 - Union Mix
 56505757 - MidGrit
 56505758 - MidLite Grit

26" BRUSHES

56505760 - Short Trim Pad Holder
 56505195 - Pad Retainer for 56505760
 56505761 - MagnaGrit
 56505762 - DynaGrit
 56505763 - AgLite
 56505764 - Prolene
 56505765 - ProLite
 56505766 - Union Mix
 56505767 - MidGrit
 56505768 - MidLite Grit

28"/BA 725 BRUSHES

56505800 - Short Trim Pad Holder
 56505195 - Pad Retainer for 56505800
 56505801 - MagnaGrit
 56505802 - DynaGrit
 56505803 - AgLite
 56505804 - Prolene
 56505805 - ProLite
 56505806 - Union Mix
 56505807 - MidGrit
 56505808 - MidLite Grit

32"/BA 825 BRUSHES

56505830 - Short Trim Pad Holder
 56505195 - Pad Retainer for 56505800
 56505831 - MagnaGrit
 56505832 - DynaGrit
 56505833 - AgLite
 56505834 - Prolene
 56505835 - ProLite
 56505836 - Union Mix
 56505837 - MidGrit
 56505838 - MidLite Grit

DISC BRUSH APPLICATION GUIDE (SUGGESTION ONLY)

Application	46 Grit	80 Grit	180 Grit	240 Grit	500 Grit	Prolene	Prolite	Union Mix
Stripping:								
Concrete	X	X						
Terrazzo	X	X						
Ceramic/Quarry tile		X						
Vinyl tile		X						
General Scrubbing:								
Concrete	X	X	X	X		X		
Terrazzo			X	X	X	X		
Ceramic/Quarry tile			X	X	X	X		
Marble					X		X	
Vinyl tile			X		X	X		
Raised-rubber tile					X		X	
Polishing:								
Raised Disc Tile								X
Marble								X
Vinyl tile								X

We provide brushes and pad holders that will give you the best possible performance between machine and floor. Following are descriptions of the materials and their applications.

- 46 Grit Brush: Most aggressive grit brush. Used primarily to clean heavy buildup on concrete floors in factories, or for heavy stripping of finish.
- 80 Grit Brush: Medium aggressive grit brush. Good all-around brush for medium to heavy buildup removal. Can also be used for general stripping operations.
- 180 Grit Brush: Least aggressive grit brush. Used for daily cleaning of hard-finished floors.
- Polypropylene Brush: Standard equipment brush. Low cost, yet effective in cleaning many common floor surfaces.
- Stiff Nylon Brush: Cleaning action similar to polypropylene. More durable and wear-resistant than polypropylene.
- Soft Nylon Brush: Least aggressive brush available. Used on soft-finish floors where a more aggressive brush would leave scratch marks, or in applications requiring very light cleaning.

24" BRUSHES

56314389 - Soft Nylon
 56314390 - Hard Nylon
 56314391 - Prolene
 56314392 - 180 Grit
 56314393 - 80 Grit
 56314394 - 46 Grit

26" BRUSHES

56314383 - Soft Nylon
 56314384 - Hard Nylon
 56314385 - Prolene
 56314386 - 180 Grit
 56314387 - 80 Grit
 56314388 - 46 Grit

28"/BA 725 BRUSHES

56412191 - Soft Nylon
 56412192 - Hard Nylon
 56412046 - Prolene
 56412193 - 180 Grit
 56412194 - 80 Grit
 56412194 - 46 Grit

CYLINDRICAL BRUSH APPLICATION GUIDE (SUGGESTION ONLY)

Application	46 Grit	80 Grit	180 Grit	Polypropylene	Stiff Nylon	Soft Nylon
Stripping:						
Concrete	X	X				
Terrazzo	X	X				
Ceramic/Quarry tile		X				
Vinyl tile		X				
General Scrubbing:						
Concrete	X	X	X	X	X	
Terrazzo			X	X	X	X
Ceramic/Quarry tile			X	X	X	X
Marble			X		X	X
Vinyl tile			X	X	X	X
Raised-rubber tile			X			X

