

OPERATION MANUAL AND PARTS LIST

TORNADO[®] INSULATION BLOWER MOTOR UNITS

E + F Series

CODE 8810F 1½ H.P.,
~~8910F~~ 2¼ H.P.

WARNING

NEVER OPERATE UNIT WITH INTAKE UNGUARD-ED. Strong suction can pull fingers or clothing into dangerous blades. ALWAYS USE RED GUARD CAP when unit is not connected to insulation hopper.

ALWAYS POINT THE EXHAUST PORT IN A SAFE DIRECTION AND WEAR SAFETY GLASSES WHEN IN THE VICINITY OF THIS UNIT. Air leaves the blower at a high velocity.

DO NOT OPERATE UNIT WITHOUT A GROUND. The three prong plug must be used with a grounded receptacle or a grounded adapter. Make certain that the adapter ground terminal is connected to a properly grounded outlet box.

To inspect brushes, unplug cord, remove top cover by removing screws and release brush spring, pull brushes out and check.

NO OTHER MAINTENANCE OF MOTOR SHOULD BE ATTEMPTED DURING FIRST YEAR AFTER PURCHASE (SEE WARRANTY).

CAUTION

Before operating your TORNADO Blower Motor Unit, make sure the voltage and current used are the same as indicated on the nameplate.

THIS UNIT TO BE USED ONLY WHEN CONNECTED TO A SUITABLE INSULATION HOPPER.

MAINTENANCE OF MOTOR UNIT

Damage to an armature invariably is caused by permitting carbon brushes to become worn to less than ¼ inch in length. To prevent this occurrence, inspect brushes after 200 hours operation and frequently thereafter, replacing when necessary. Failure to do so will nullify our warranty.

REFERENCE DOC. ONLY
NOT CURRENT REVISION



BREUER[®] ELECTRIC MFG. CO.

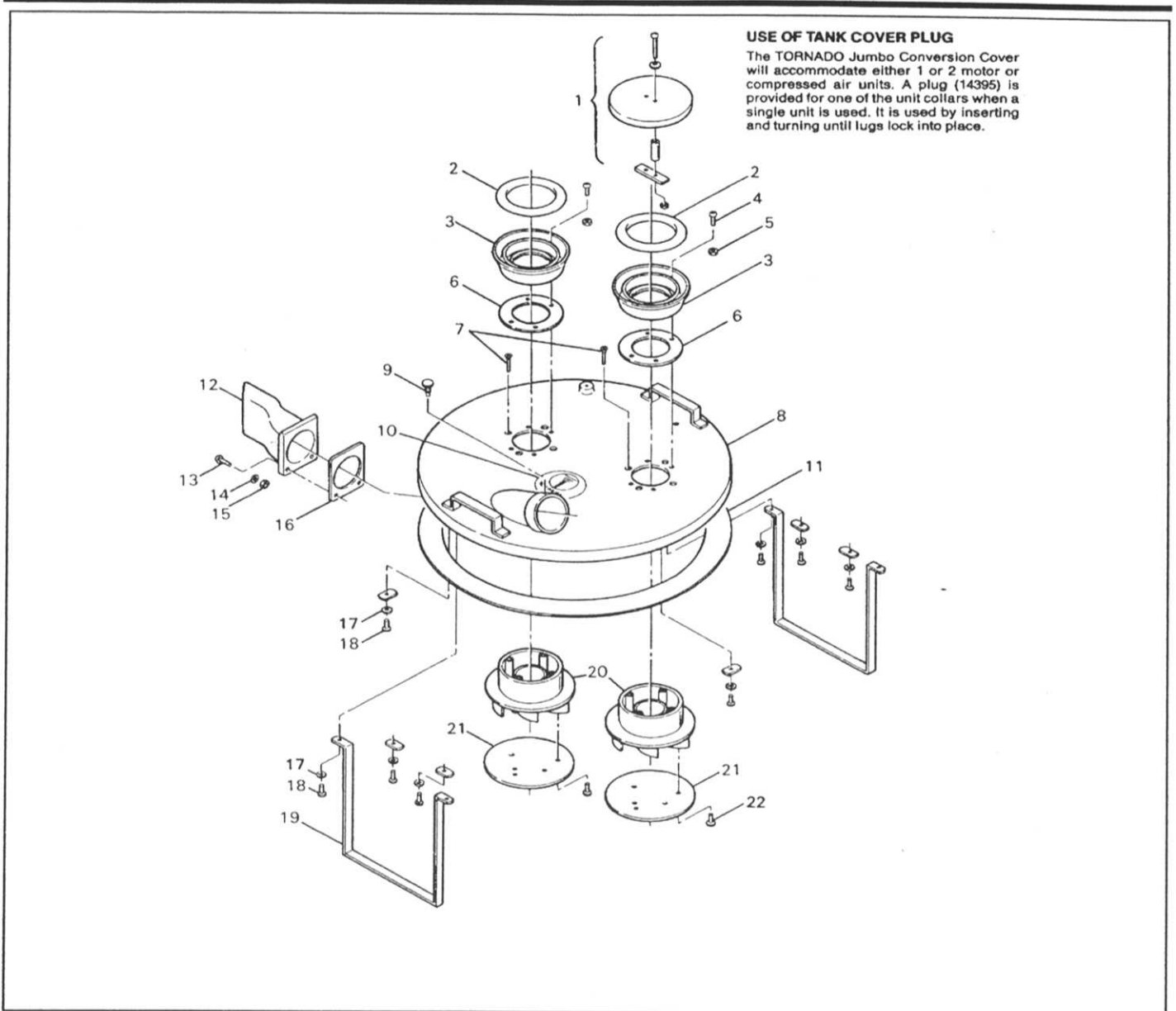
7401 W. LAWRENCE AVENUE • CHICAGO, IL 60656-3489

INDEX No.	DESCRIPTION	VOLTAGE		CODE NUMBERS	
		115V		8910F	
		PART NO.	QTY. RQD.	PART NO.	QTY. RQD.
1	Nut	7533	4	7533	4
2	Load Spring	7858	1	7858	1
3	Switch	8516	1	8516	1
4	Screw	11276	4	11197	4
5	Cooling Fan Baffle	11268	1	11198	1
6	Fiberglass Pad	11269	1	11269	1
7	Top Cover	12436	1	12436	1
8	Bearing	11236	1	11236	1
9	Fan Chamber Plate	11274	1	11274	1
10	Cover Plate S/A (Incl. Items 37 & 38)	12872	1	12643	1
11	Field Screw	11275	2	11239	2
12	Screw	11240	4	11489	4
13	Cable (115 Volts)	12072	1	12072	1
14	Screw	12997	1	12997	1
15	Motor Fan Housing S/A	11243	1	11243	1
16	Fan	12809	1	12809	1
17	Fan Chamber	14365	1	14365	1
18	Strain Relief Bushing	11252	1	11252	1
19	Bumper	11253	1	11253	1
20	Nameplate (Serial)	11259	1	11259	1
21	Nameplate (Logo)	11900	1	11900	1
22	Intake Guard (PLASTIC)	11261	1	11261	1
23	Brush Card Assembly (Incl. Item 36)	11278	1	11278	1
24	Screw	7534	3	7534	3
25	Lock Washer	1713	1	1713	1
26	Nut	10892	2	10892	2
27	Plug (115 Volts)	8220	1	8220	1
28	Armature (115 Volts)	11270	1	11255	1
29	Field (115 Volts)	11271	1	11256	1
30	"U" Clip	11415	2	11415	2
31	Carbon Brush (115 Volts)	11486	2	11251	2
32	Screw	11245	2	11245	2
33	Screw	11244	4	11244	4
34	Nut (Spaces Switch in Handle)	940	1	940	1
35	Nut (Holds Switch to Handle)	5773	1	5773	1
36	Brushing Spring & Damper S/A	11570	2	11570	2
37	Felt Washer	12602	1	12602	1
38	Splitwasher	12603	1	12603	1
39	Screw	12439	2	12439	2
40	Bushing 1 - IN FRONT & 1 BEHIND FAN	12601	2	12601	2
41	Bearing	11556	1	11556	1
42	Gasket	11555	1	11555	1
43	Gasket	11562	1	11562	1
44	Warning Label	11948	1	11948	1
*45	"U" Bracket	12996	1	12996	1
46	Brush Holder Pad	13022	2	13022	2
47	Exhaust Guard			12951	1
48	Ring	14322	1	14322	1

HOW TO ORDER REPLACEMENT PARTS

When ordering, designate Part Number and Description to avoid receiving incorrect items. Obtain code number from nameplate on motor housing of blower. Refer to exploded view of motor for index number. Using index number, refer to parts list and code number to obtain correct parts number.

Tornado Single and Dual External Filter Air Head Assemblies

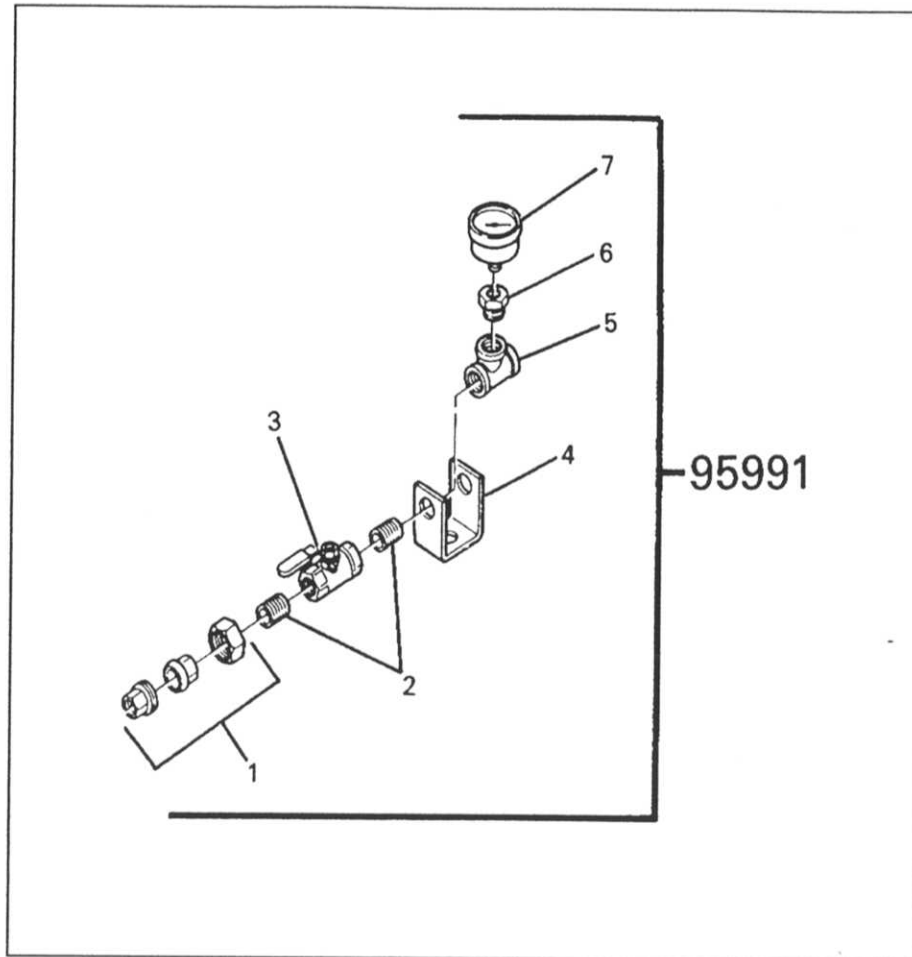


USE OF TANK COVER PLUG
 The TORNADO Jumbo Conversion Cover will accommodate either 1 or 2 motor or compressed air units. A plug (14395) is provided for one of the unit collars when a single unit is used. It is used by inserting and turning until lugs lock into place.

ITEM NO.	QTY.	PART NO.	DESCRIPTION	ITEM NO.	QTY.	PART NO.	DESCRIPTION
1	1	14395	TANK COVER PLUG ASSY.	14	2	01574	LOCKWASHER
2	2	08004	MOUNTING GASKET	15	2	01497	NUT
3	2	14415	ADAPTOR	16	1	04908	FLANGE GASKET
4	8	02053	SCREW	17	10	00851	WASHER
5	8	—	Nut	18	10	00086	SCREW
6	2	11386	GASKET	19	2	04997	STAND
7	8	11394	SCREW	20	2	11358	INTAKE GUIDE
8	1	13832	TANK COVER S/A	21	2	14731	TOP PLATE
9	1	08057	THUMB SCREW	22	6	11390	SCREW
10	1	07648	NAME PLATE				
11	1	17131	TANK COVER GASKET (6.5 FT.)				
12	1	90442	DEFLECTOR				
13	2	02038	SCREW				

Figure No. 3 Jumbo Cover Assembly

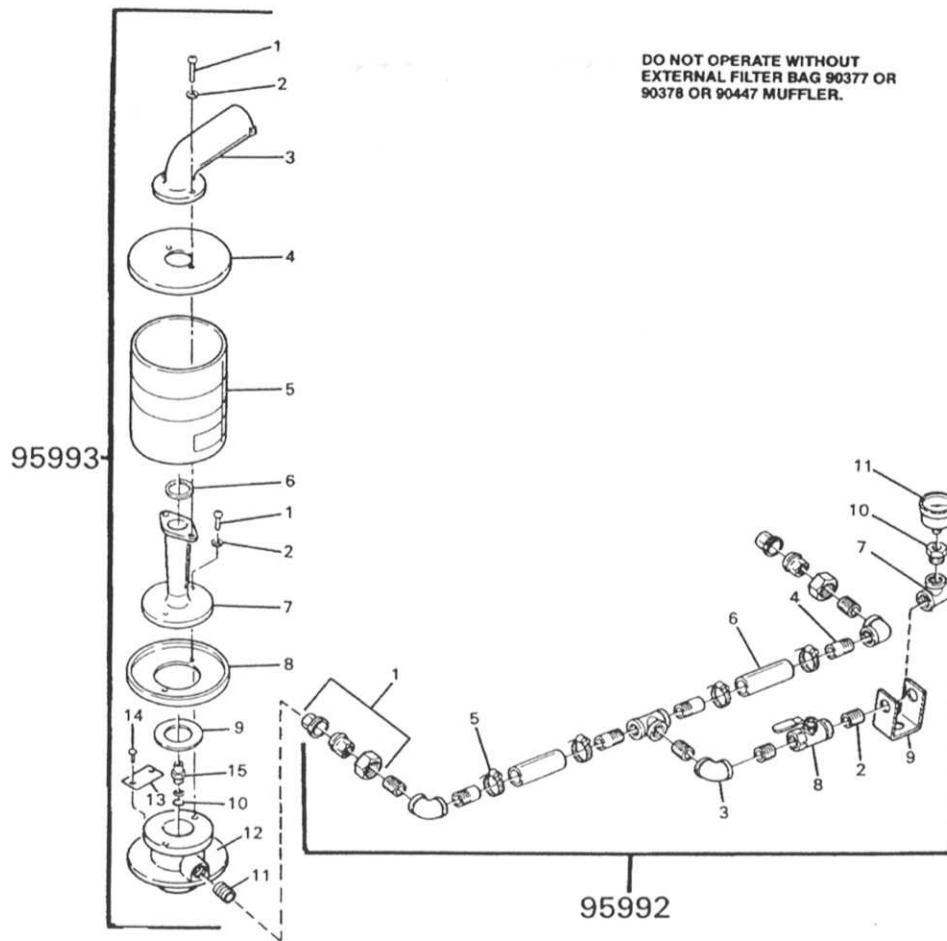
Tornado Single and Dual External Filter Air Head Assemblies



(95991) CONNECTOR ASSY. SINGLE HEAD

ITEM NO.	QTY.	PART NO.	DESCRIPTION
1	1	06384	JOINT UNION
2	2	05730	NIPPLE
3	1	04985	VALVE
4	1	15163	BRACKET
5	1	05731	PIPE TEE
6	1	05733	PIPE BUSHING
7	1	05732	AIR PRESSURE GAUGE

Tornado Single and Dual External Filter Air Head Assemblies



(95993) EXTERNAL FILTER AIR VAC

ITEM NO.	QTY.	PART NO.	DESCRIPTION
1	4	02038	SCREW
2	4	01574	LOCKWASHER
3	1	05734	ELBOW-CONNECTING
4	1	05735	MUFFLER COVER
5	1	05736	MUFFLER SHELL
6	1	05737	GASKET
7	1	05723	NOZZLE
8	1	04927	MUFFLER BASE
9	1	05724	GASKET
10	3	02481	'O' RING
11	1	05730	NIPPLE
12	1	11407	BASE
13	1	04924	NAMEPLATE
14	2	02573	DRIVESCREW
15	1	04982	JET (3/16 DIA.) INSTALLED
	1	04983	JET (7/32 D1A.)
	1	04984	JET (1/4 DIA.)

(95992) CONNECTOR ASSY. DOUBLE HEAD

ITEM NO.	QTY.	PART NO.	DESCRIPTION
1	2	06384	JOINT UNION
2	5	05730	NIPPLE
3	3	05729	90 ELBOW
4	4	05726	MALE ADAPTOR-HOSE TO PIPE
5	4	05727	CLAMP
6	2	11561	HOSE
7	2	05731	PIPE TEE
8	1	04985	VALVE
9	1	15163	BRACKET
10	1	05733	PIPE BUSHING
11	1	05732	AIR PRESSURE GAUGE