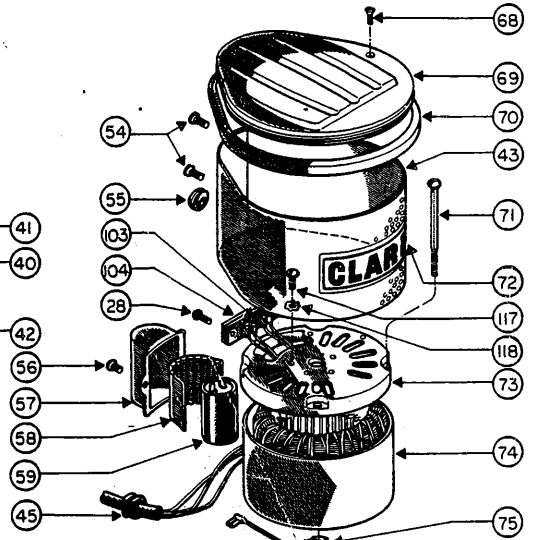
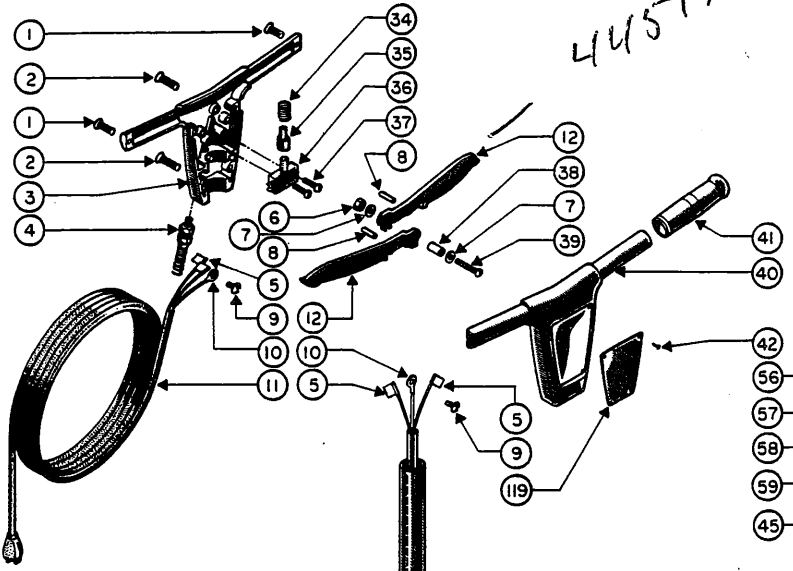
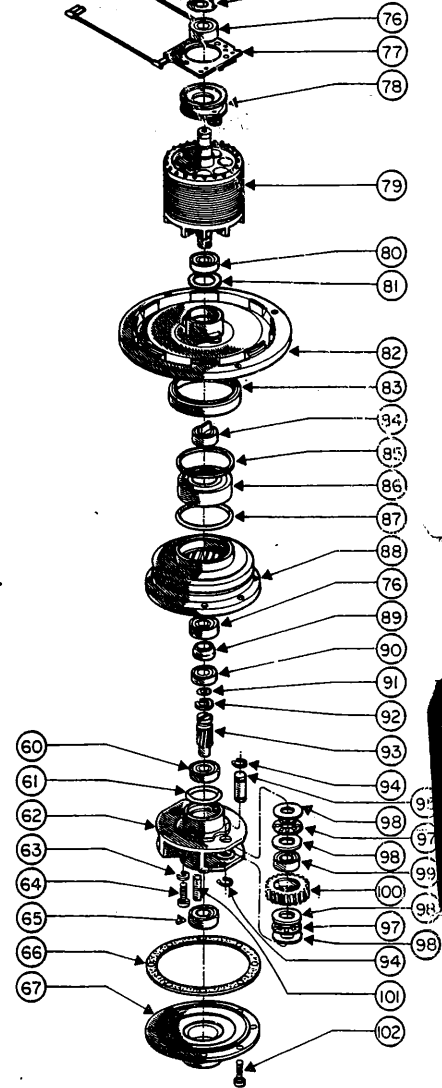
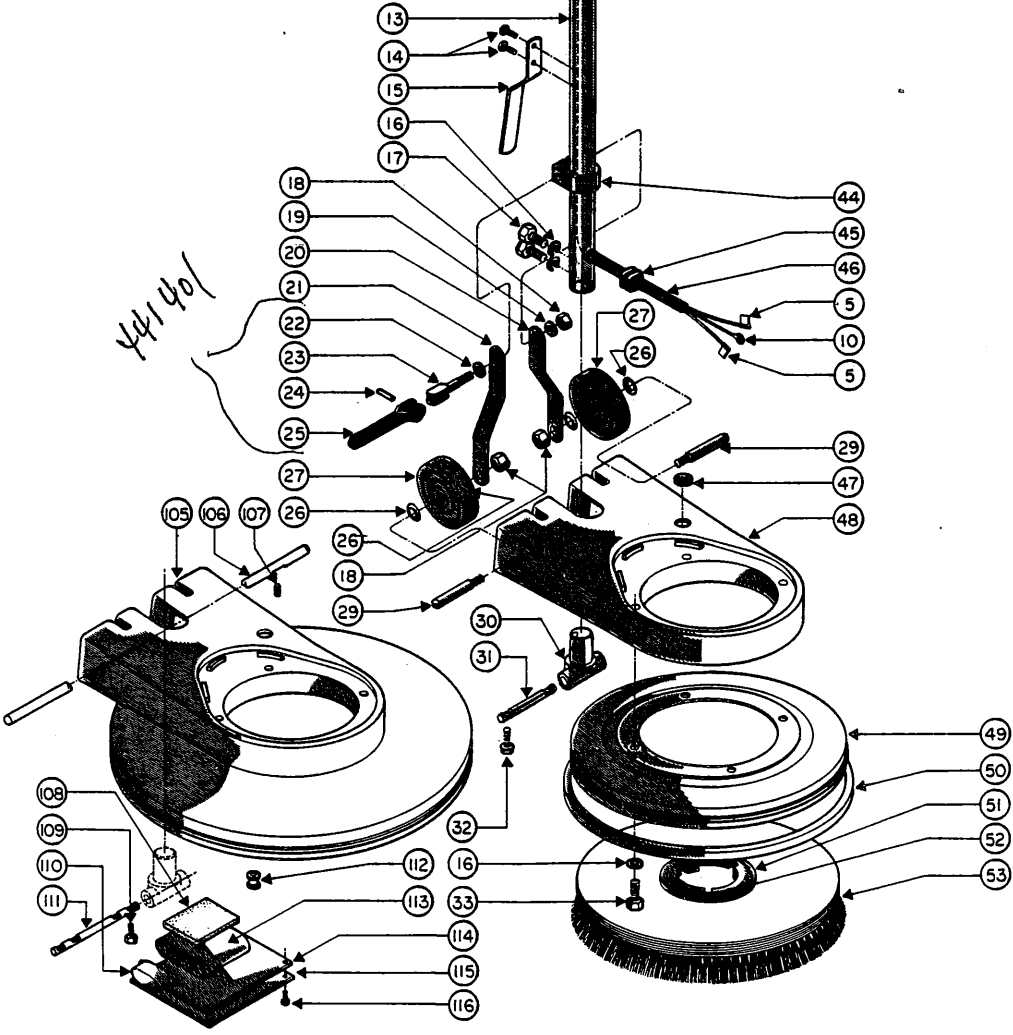


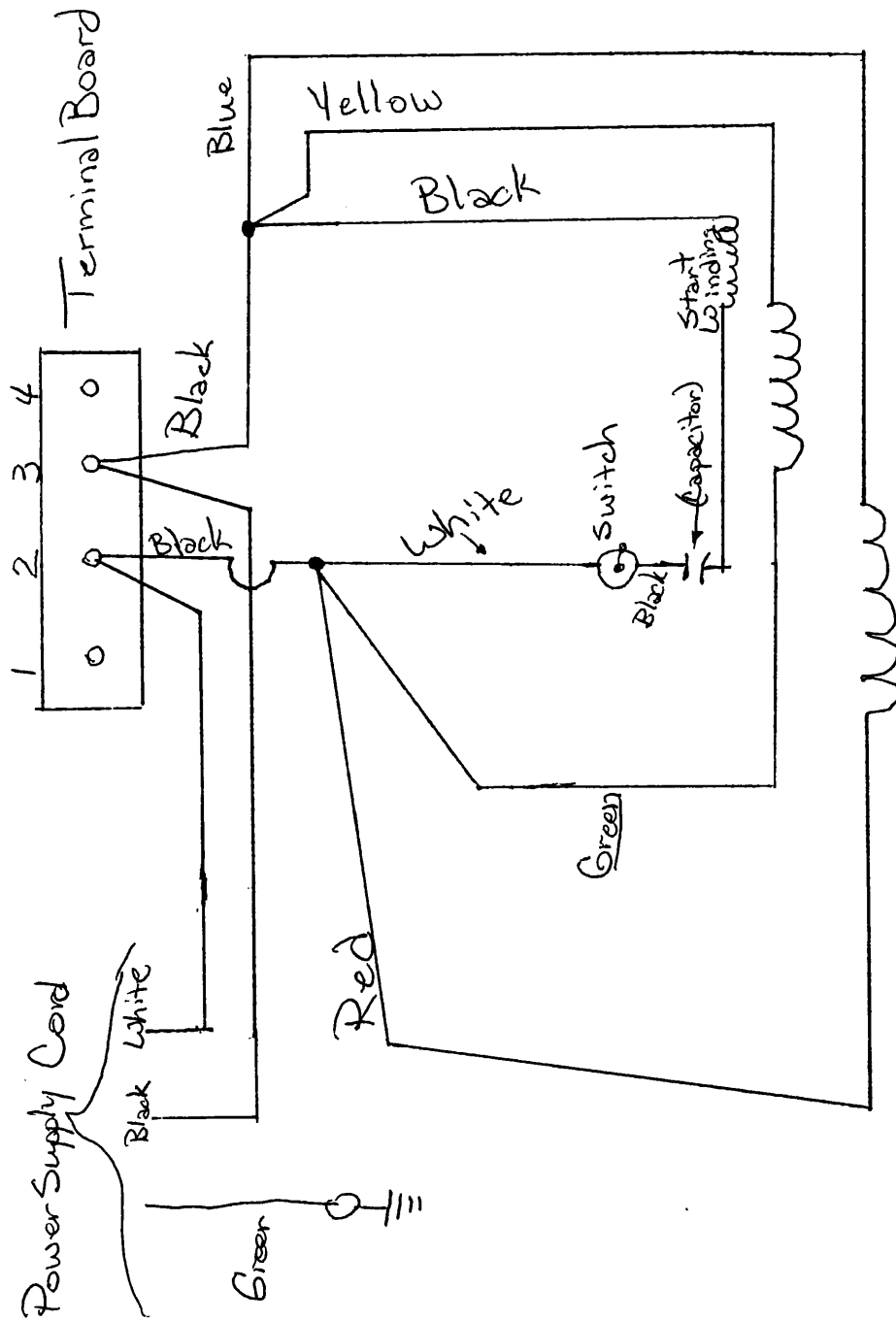
445174-4



441401



Ref. No.	Code No.	Description	Qty. Req'd	Ref. No.	Code No.	Description	Qty.
1	962098-0	Screw - 1/4-20 x 3/4 Flat Head	2	56	962333-1	Screw - 10-32 x 1/4 Round Head	1
2	962487-5	Screw - 1/4-20 x 3/4 Phillips Fillister Head	3	57	442305-9	Capacitor Cover	1
3	442311-7	Cover-Switch Housing - Model C-15	1	58	414870-6	Insulation	1
	442311-7	Cover-Switch Housing - Model C-16	1	59	412471-5	Capacitor - 3/4 H.P.	1
	442302-6	Cover-Switch Housing - Model C-18	1		412481-4	Capacitor - 1 H.P.	1
	442302-6	Cover-Switch Housing - Model C-20	1	60	902580-0	Bearing	1
	442302-6	Cover-Switch Housing - Model C-22	1	61	507603-9	Seal - Idler Housing "O" Ring	1
4	442302-6	Housing - Switch Rear	1	62	504248-6	Housing - Idler Gear	1
	337504-5	Strain Reliever - 3/8 C-15	1	63	980685-2	Washer - 5/16 High Collar Lock	2
	337504-5	Strain Reliever - 3/8 C-16	1	64	962300-0	Screw - 5/16-18 x 1 1/4" Soc. Cap	2
	467504-7	Strain Reliever - 1/2 C-18	1	65	902573-5	Bearing	1
	467504-7	Strain Reliever - 1/2 C-20	1	66	503403-8	Gasket - Gear Unit	1
	467504-7	Strain Reliever - 1/2 C-22	1	67	502303-1	Cover - Ring Gear Housing	1
	467504-7	Strain Relief - Extension Cord	1	68	962829-8	Screw - 10-24 x 3/4 Oval Head Machine	2
5	911594-0	Terminal Clip-Right Angle	6	69	442301-8	Cover - Drip	1
6	920200-3	Nut - 10-24 Hex	1	70	441201-1	Bumper - Drip	1
7	980643-1	Washer - #10 Plain	2	71	960106-3	Screw - Round Head - 3/4 H.P. Motor	4
8	925189-3	Pin - 3/16 x 1" Dowel	2		960107-1	Screw - Round Head - 1 H.P. Motor	4
9	962291-1	Screw - 8-32 x 5/16 Round Head	2		960311-9	Screw - Round Head - 1 1/2 H.P.	4
10	911933-0	Terminal	2	72	415170-0	Label - Clarke	1
11	908879-0	Cord Assembly - Handle C-15	1	73	442901-5	End Ball	1
	908879-0	Cord Assembly - Handle C-16	1	74	448503-3	Stator Complete - 3/4 H.P.-115 Volt	1
	908202-5	Cord Assembly - Handle C-18	1		448504-1	Stator Complete - 3/4 H.P.-230 Volt	1
	908202-5	Cord Assembly - Handle C-20	1		448505-8	Stator Complete - 1 H.P.-115 Volt	1
	908202-5	Cord Assembly - Handle C-22	1		448506-6	Stator Complete - 1 H.P.-230 Volt	1
12	908202-5	Cord - 50 Feet Extension	1		443151-6	Stator Complete - 1 1/2 H.P. 115/230 Volt	1
13	445101-9	Lever - Switch	2	75	980217-4	Washer - Wave	1
14	449001-7	Tube - Handle	1	76	902046-2	Bell Bearing	2
15	414552-0	Cord Hook	1	77	448507-4	Stationary Switch	1
	962065-9	Screw - 8-32 x 1/4 Rd. Hd. Mach.	2	78	418578-1	Centrifugal Switch - 230 Volt 50 Cycle	1
16	980652-2	Washer - 5/16 Lock	6		911866-2	Centrifugal Switch - 115 Volt 60 Cycle	1
17	962158-2	Screw - 5/16-18 x 7/8 Hex Hd.	2	79	447501-8	Rotor Complete - 3/4 H.P. 115/230 Volt	1
18	920248-2	Nut - 3/8-16 Hug Lock	3		447502-6	Rotor Complete - 1 H.P. 115/230 Volt	1
19	980645-6	Washer - 3/8 Plain	1		440451-3	Rotor Complete - 1 1/2 H.P.-115/230 Volt	1
20	440302-8	Link Arm - Left Hand	1	80	902654-3	Bearing	1
21	440301-0	Link Arm - Right Hand	1	81	467328-1	Ring - Gear Housing Retaining	1
22	980349-5	Washer - Wear	1	82	440201-2	Adaptor - Gear Unit	1
23	441301-9	Bolt - Locking Cam	1	83	507640-1	Seal	1
24	925132-3	Pin - 1/4 x 3/4 Groove	1	84	502404-7	Coupling Assembly - Drive	1
25	461404-6	Cam Complete - Locking	1	85	507302-8	Ring - Retaining	1
26	980681-1	Washer - Wave	4	86	902609-7	Bearing	1
27	419752-1	Wheel - 3/4 and 1 H.P. Machines	2	87	507604-7	"O" Ring - Ring Gear Bearing	1
	499701-1	Wheel - 1 1/2 H.P. Machine	2	88	504241-1	Housing - Ring Gear	1
28	962727-4	Screw - 8-32 x 1/2 Pan Hd. Thd. Cutting Type 23	2	89	508240-9	Spacer - Oil Seal	1
			2	90	507641-9	Seal - Pinion	1
29	447701-4	Shaft - Wheel - 3/4 and 1 H.P. Machines	2	91	507341-6	"O" Ring	1
30	449201-3	Tongue - Handle	1	92	507340-8	Ring - Retaining	1
31	447702-2	Shaft - Tongue	1	93	507740-9	Shaft - Pinion	1
32	962830-6	Screw - 1/4-20 x 1" Tap-Tite	2	94	167308-6	Retaining Ring	4
33	962172-3	Screw - 5/16-18 x 2" Hex Hd. - 1/2 H.P. Mach.	4	95	507743-3	Shaft - Planet Gear	2
34	962295-2	Screw - 5/16-18 x 3/4 Hex Hd. - 1 1/2 H.P. Mach.	4	96			
35	448301-2	Spring - Switch	1	97	902040-5	Bearing - Idler Thrust	4
36	440202-0	Adaptor - Switch	1	98	980045-9	Washer - Thrust Brg. Idler Gear	8
37	911690-6	Switch	1	99	902048-8	Bearing	2
	962212-7	Screw - 6-32 x 7/8 Round Head	2	100	503541-5	Idler Gear (Planet)	2
38	508204-5	Spacer - Switch Lever	1	110	925536-5	Pin - 5/16 x 1 1/4" Dowel	1
39	962133-5	Screw - 10-24 x 1" Round Head	1	102	962241-6	Screw - 10-24 x 1/2 Soc. Cap	8
40	444201-8	Housing - Switch Front	1	103	419270-4	Terminal Board - Model C-15, C-16, C-18, C-20	1
41	463712-0	Grip - Handle	2		449251-8	Terminal Board - Model C-22	1
42	962282-0	Screw - 0 x 3/16 P.K. Type "U"	4	104	419271-2	Terminal Strip	1
43	448501-7	Shroud - 3/4 H.P. Motor	1	105	443250-6	Frame - Main - Model C-22	1
	448502-5	Shroud - 1 H.P. Motor	1	106	447750-1	Shaft - Wheel - Model C-22	1
	448500-4	Shroud - 1 1/2 H.P. Motor	1	107	962292-9	Screw - 5/16-18 x 1/2 Soc. Set - Model C-22	1
44	442001-4	Clamp - Handle Tube	1	108	442450-3	Cushion - Capacitor - Model C-22	1
45	737502-5	Strain Relief	2	109	962833-0	Screw - 1/4-20 x 3/4 Hex Wash. Hd. "Tap-Tite" Model C-22	4
46	908203-3	Cord - Handle Tube	1				
47	411370-0	Plug - Button	1	101	501371-9	Boot - Capacitor - Model C-22	1
48	443201-9	Frame - Main	1	111	447751-9	Shaft - Tongue - Model C-22	1
49	447811-1	Shield - Model C-15	1	112	443850-3	Grommet - Model C-22	1
	447821-0	Shield - Model C-16	1	113	502471-6	Capacitor - Model C-22	1
50	447831-9	Shield - Model C-18	1	114	443450-2	Gasket - Cap Cover - Model C-22	1
	447841-8	Shield - Model C-20	1	115	442350-5	Cover - Capacitor - Model C-22	1
	441211-0	Bumper - Shield - Model C-15	1	116	962386-9	Screw - 10-24 x 7/16 Rd. Hd. - Model C-22	4
	441221-9	Bumper - Shield - Model C-16	1		445201-7	Motor Complete - 3/4 H.P. - 115 Volt	
	441231-8	Bumper - Shield - Model C-18	1		445207-4	Motor Complete - 3/4 H.P. - 230 Volt	
	441241-7	Bumper - Shield - Model C-20	1		445202-5	Motor Complete - 1 H.P. - 115 Volt	
51	441251-6	Bumper - Model C-22	1		445208-2	Motor Complete - 1 H.P. - 230 Volt	
52	466616-0	Locking Plate	1		445251-2	Motor Complete - 1 1/2 H.P. - 115 Volt	
53	962427-1	Screw - 12 x 1" Flat Head Wood	3		445257-9	Motor Complete - 1 1/2 H.P.-230 Volt	
	450914-7	Brush Assembly - Model C-15	1	117	962085-7	Screw - 10-24 x 5/16 Rd. Hd.	1
	410953-4	Brush Assembly - Model C-16	1	118	980603-5	Shakeproof Washer - 1110	1
	410974-0	Brush Assembly - Model C-18	1	119	446311-3	Plate-Mod. & Ser. No. C-15 (115 Volt)	1
	480918-6	Brush Assembly - Model C-20	1		446321-2	Plate-Mod. & Ser. No. C-16 (115 Volt)	1
	440950-4	Brush Assembly - Model C-22	1		446331-1	Plate-Mod. & Ser. No. C-18 (115 Volt)	1
54	962472-7	Screw - 8 x 3/8 Stove Hd. Sheet Metal	2		446341-0	Plate Mod. & Ser. No. C-20 (115 Volt)	1
55	611101-7	Bushing - Heyco	1		446351-9	Plate-Mod. & Ser. No. C-22 (115 Volt)	1



1-Hp. Motor C-line - 115 volt 60 cys. 1Ø