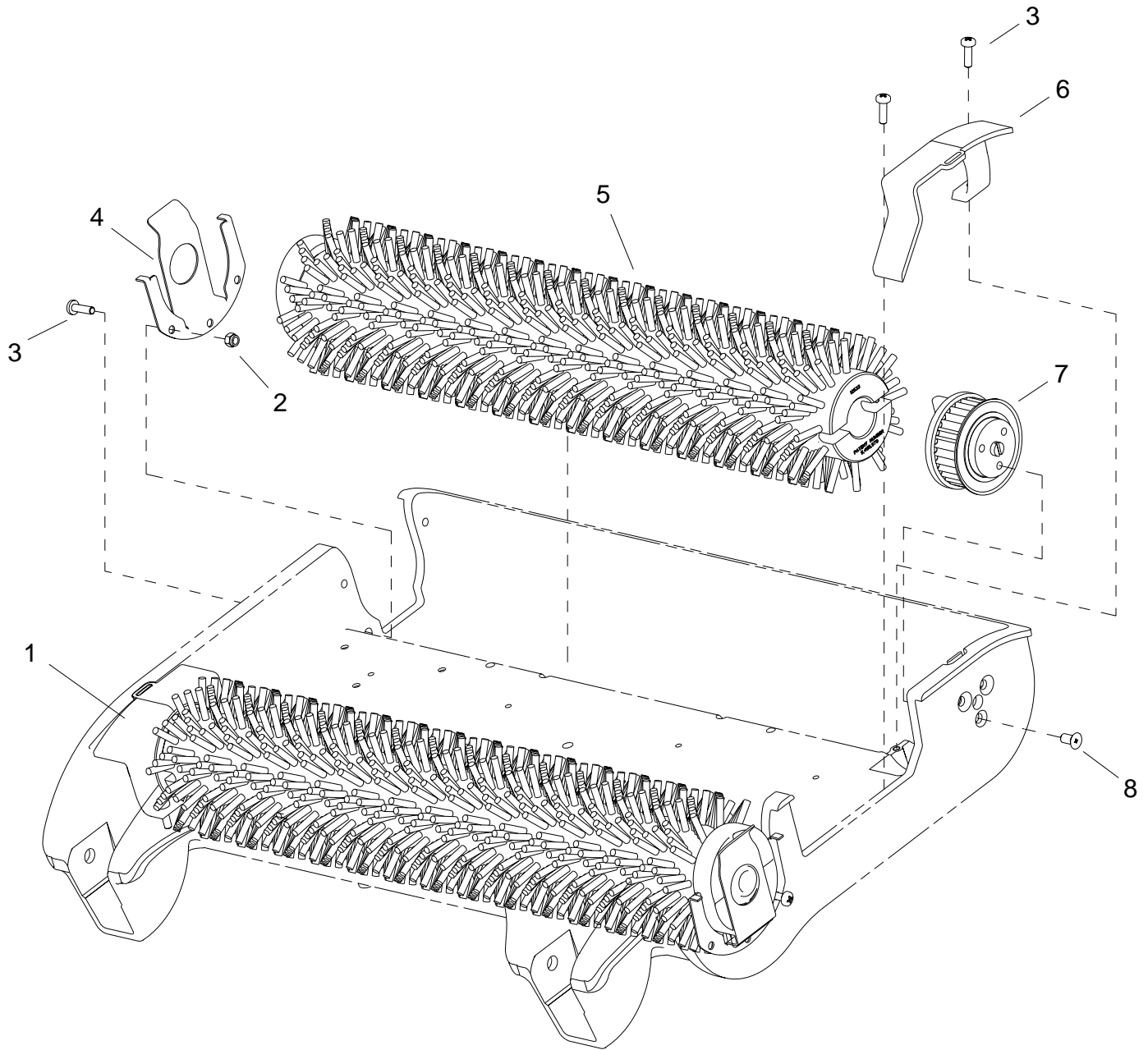


PARTS LIST

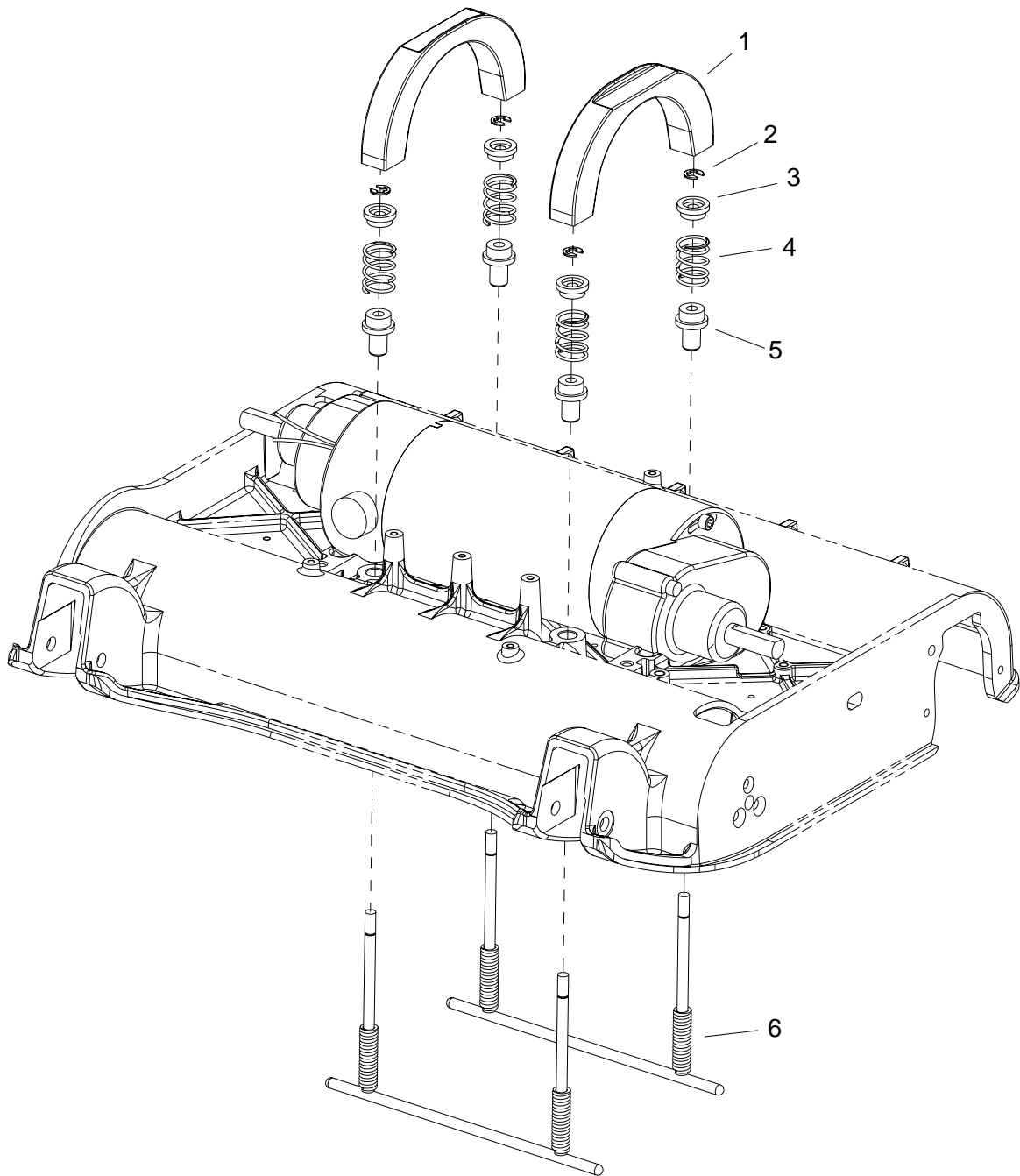
BRUSH



BRUSH

REF	PART NO.	QTY	DESCRIPTION	SERIAL NO. FROM	NOTES:
1	270130	1	COVER, BELT, RIGHT		
2	57314	2	NUT, M4, LK, ISO7040, SST		
3	70898	6	SCR, M4X14, PHMS, DIN7985 SST		
4	730396	2	SPRING, BRUSH CLIP		
5	12544	2	ASSY, BRUSH & HUB		
6	270129	1	COVER, BELT, LEFT		
7	12535	2	ASSY, BRUSH DRIVE		
8	70886	6	SCR, M5X10, PHS, FHD, ISO7046, SST		

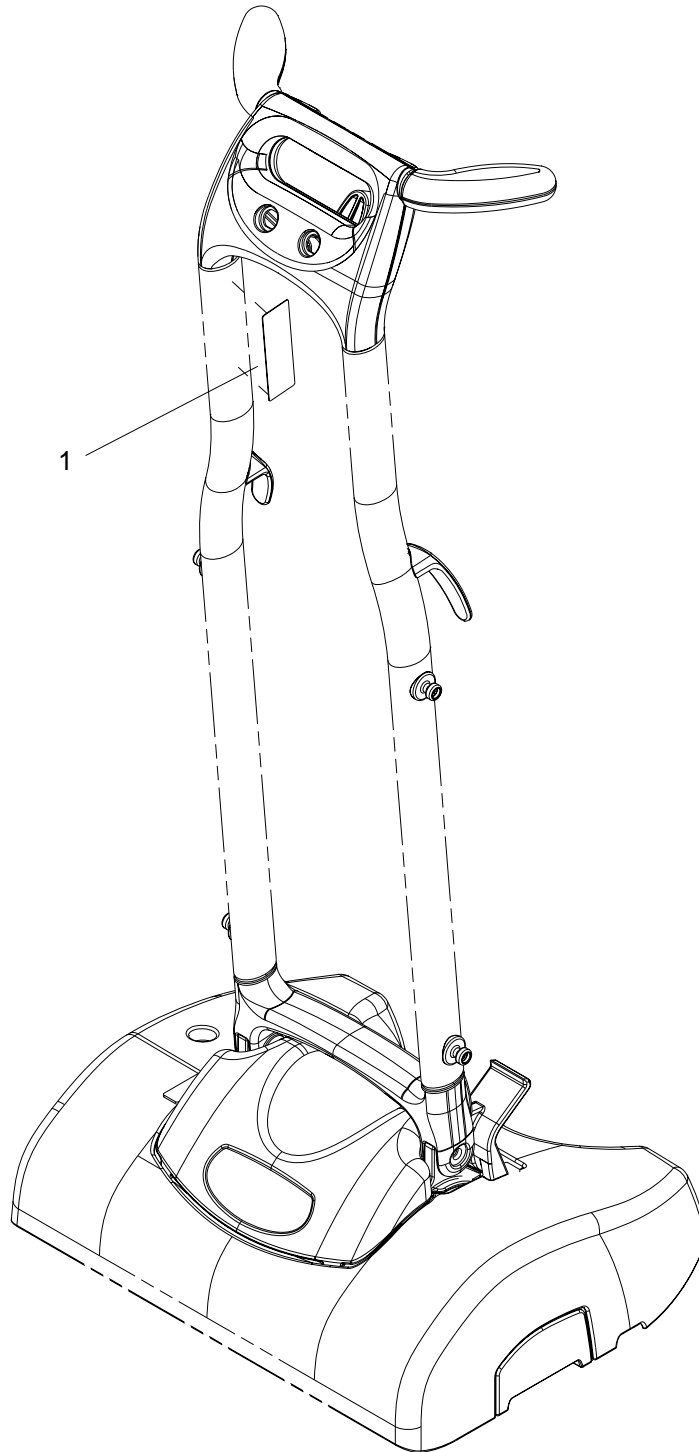
BRUSH LIFT



BRUSH LIFT

REF	PART NO.	QTY	DESCRIPTION	SERIAL NO. FROM	NOTES:
1	141042	2	BRACKET, CROSSOVER PUSH		
2	67606	4	RING, E-TYPE, 5MM ID, DIN6799		
3	09156	4	BRG, FLNG, 6MM IDX7MM LONG		
4	73997	4	SPRING, COM, 18.28 OD X 25L		
5	09155	4	BRG, FLNG, 6MM IDX24MM LONG		
6	67605	2	ROD, LIFTING		

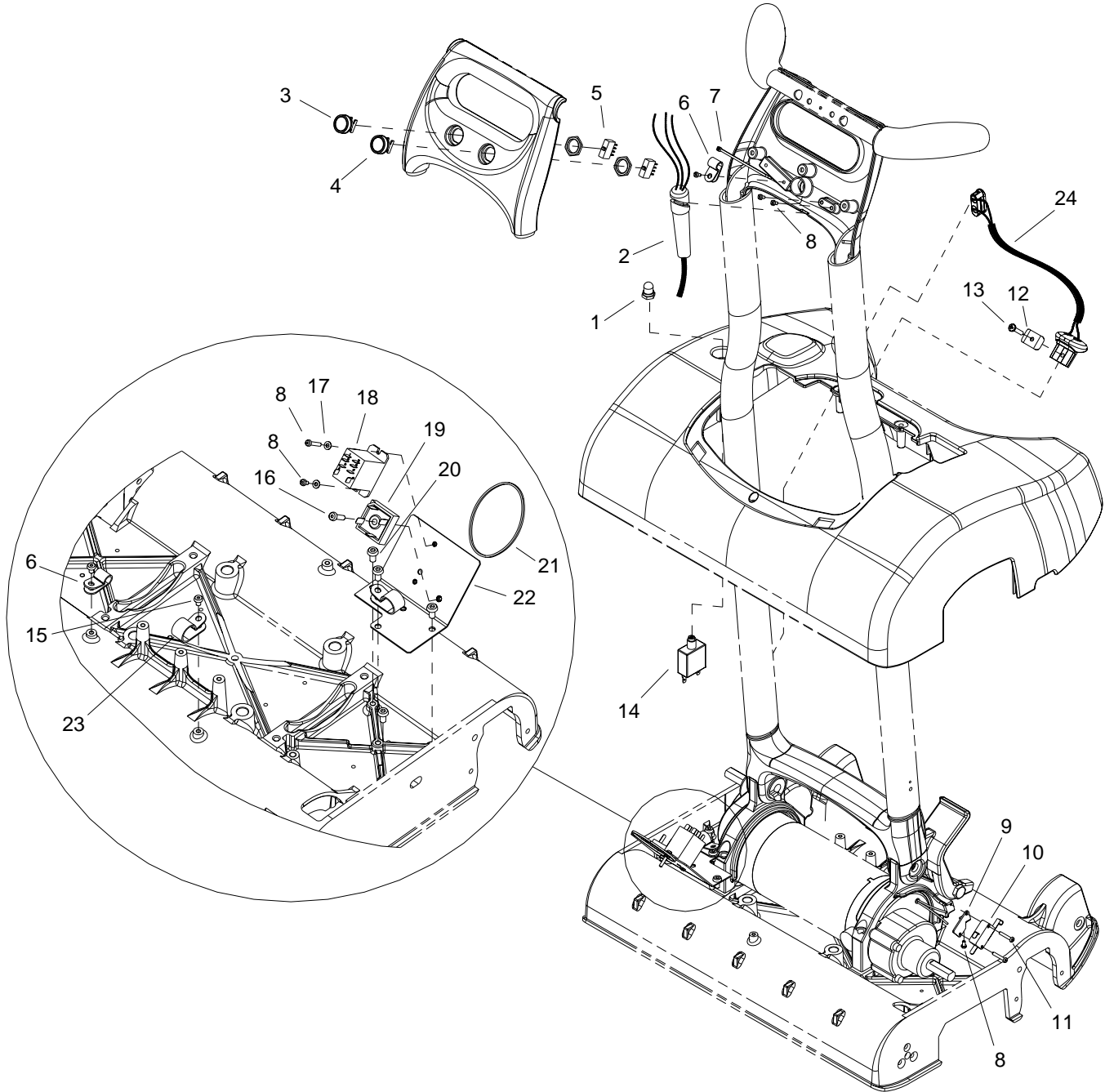
DECAL



DECAL

REF	PART NO.	QTY	DESCRIPTION	SERIAL NO. FROM	NOTES:
1	500895	1	LABEL, WARNING		

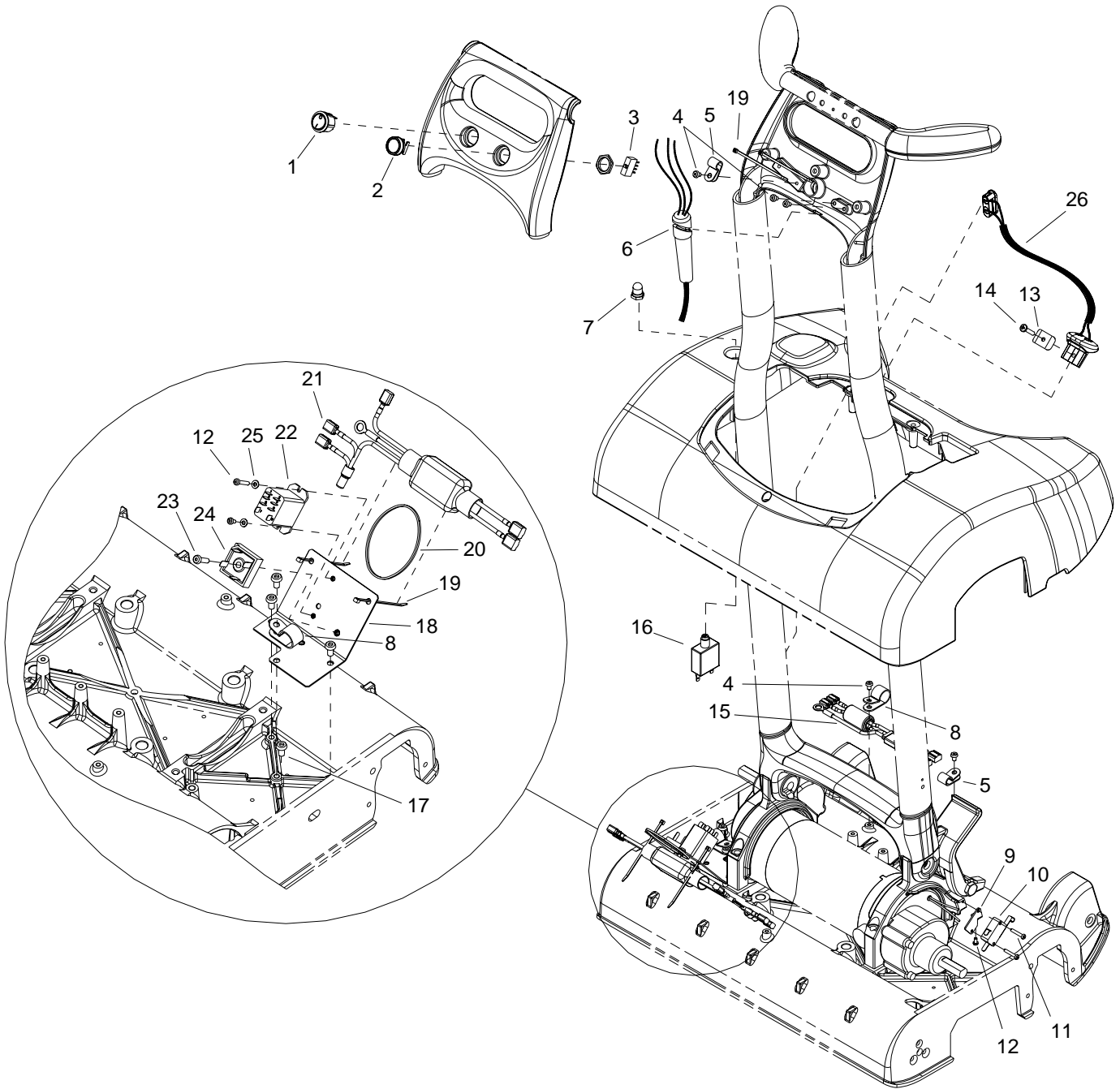
ELECTRICAL-120V



ELECTRICAL-120V

REF	PART NO.	QTY	DESCRIPTION	SERIAL NO. FROM	NOTES:
1	14924	1	BOOT, 3/8 CIRCUIT BREAKER		
2	23729	1	CORD SET, 18/3 X 40FT SJT		
3	38370	1	ASM RED BUTTON W/BEZEL		
4	38371	1	ASM GREEN BUTTON W/BEZEL		
5	38372	2	SWITCH, ITW MICRO		
6	20005	2	CLAMP, 5/16 NYLON		
7	78601	1	TIE, CABLE NYLON		
8	70935	6	SCR, M3X6, BSHCS, ISO7380, SST		
9	140972	1	BRKT, MTR BRKT, SWITCH		
10	72152	1	SWITCH, 125VAC SP NC ROLLER		
11	70936	2	SCR, M3X16, BSHCS, ISO7380, SST		
12	20110	1	CLIP, WIRE		
13	70882	1	SCR, M4X20, PPHMS, ISO7045, SST		
14	140839	1	BREAKER, 8A VDE CIRCUIT		
15	70901	2	SCR, M4X6, BSHCS, ISO7380, SST		
16	70950	1	SCR, M4X16, BSHCS, ISO7380, SST		
17	87517	2	WASHER, M3, FL, ISO7089, SST		
18	67516	1	RELAY, 15A 120VAC MINI		
19	67488	1	RECTIFIER, 50A 600V BRIDGE		
20	70951	4	SCR, M5X10, BSHCS, ISO7380, SST		
21	67517	1	RUBBER BAND		
22	05248	1	PLATE, BASE, ELECTRICAL MTG		
23	20040	2	CLAMP, 17,7 NYLON		
24	41563	1	HARNESS, MAVERICK MAIN		
25	880462	1	WIRE, 10" BLK/18 76040 X 76040		NOT SHOWN
26	880471	1	WIRE, 9" BLK/18 76040 X 76040		NOT SHOWN
27	880469	1	WIRE, 18" ORG/18 76040 X 76040		NOT SHOWN
28	880468	1	WIRE, 15" ORG/18 76040 X 76040		NOT SHOWN

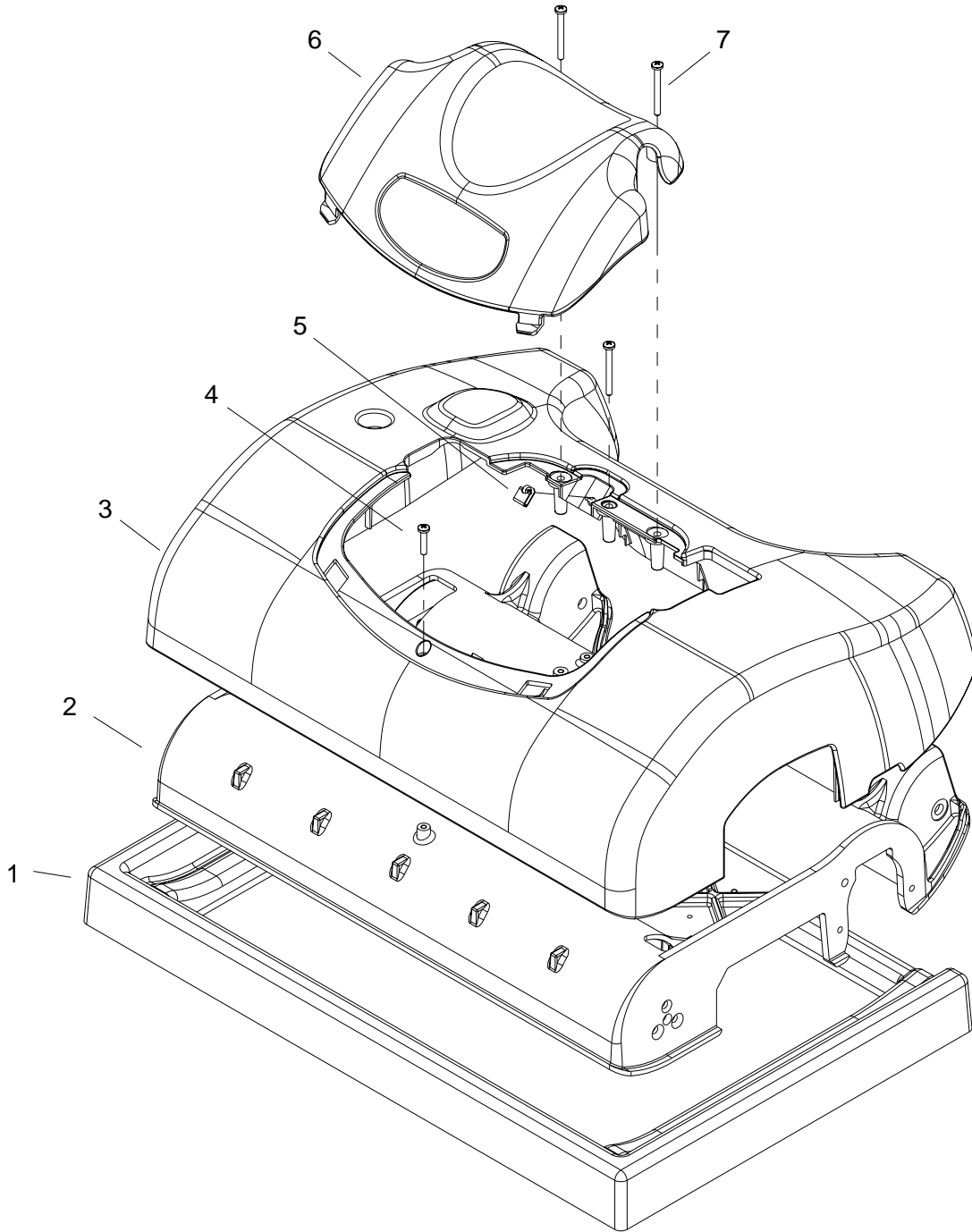
ELECTRICAL-230V



ELECTRICAL-230V

REF	PART NO.	QTY	DESCRIPTION	SERIAL NO. FROM	NOTES:
1	72206	1	SWITCH, BLACK, ROCKER		
2	38371	1	ASM GREEN BUTTON W/BEZEL		
3	38372	1	SWITCH, ITW, MICRO		
4	70901	5	SCR, M4X6, BSHCS, ISO7380, SST		
5	20005	2	CLAMP, 5/16 NYLON		
6	23738	1	CORD SET, 18/3 X 40FT SJT		
7	14942	1	BOOT, 3/8 CIRCUIT BREAKER		
8	20040	2	CLAMP, 17,7 NYLON		
9	140972	1	BRKT, MTR BRKT, SWITCH		
10	72152	1	SWITCH, 125VAC SP NC ROLLER		
11	70936	2	SCR, M3X16, BSHCS, ISO7380, SST		
12	70935	3	SCR, M3X6, BSHCS, ISO7380, SST		
13	20110	1	CLIP, WIRE		
14	70882	1	SCR, M4X20, PPHMS, ISO7045, SST		
15	41590	1	FILTER, EMC BRUSH		
16	141046	1	BREAKER, 5A VDE CIRCUIT		
17	70951	4	SCR, M5X10, BSHCS, ISO7380, SST		
18	05248	1	PLATE, BASE, ELECTRICAL MTG		
19	78601	4	TIE, CABLE NYLON		
20	67517	1	RUBBER BAND		
21	41589	1	FILTER, EMC, MAIN		
22	67622	1	RELAY, 10A 230V MINI SPDT		
23	70950	1	SCR, M416, BSHCS, ISO7380, SST		
24	67488	1	RECTIFIER, 50A 600V BRIDGE		
25	87517	2	WASHER, M3, FL, ISO7089, SST		
26	41594	1	HARNESS, MAIN, 230VAC, IMIE		
27	880462	1	WIRE, 11" BLK/18 76040 X 76040		NOT SHOWN
28	880469	1	WIRE, 18" ORG/18 76040 X 76040		NOT SHOWN
29	880471	1	WIRE, 9" BLK/18 76040 X 76040		NOT SHOWN

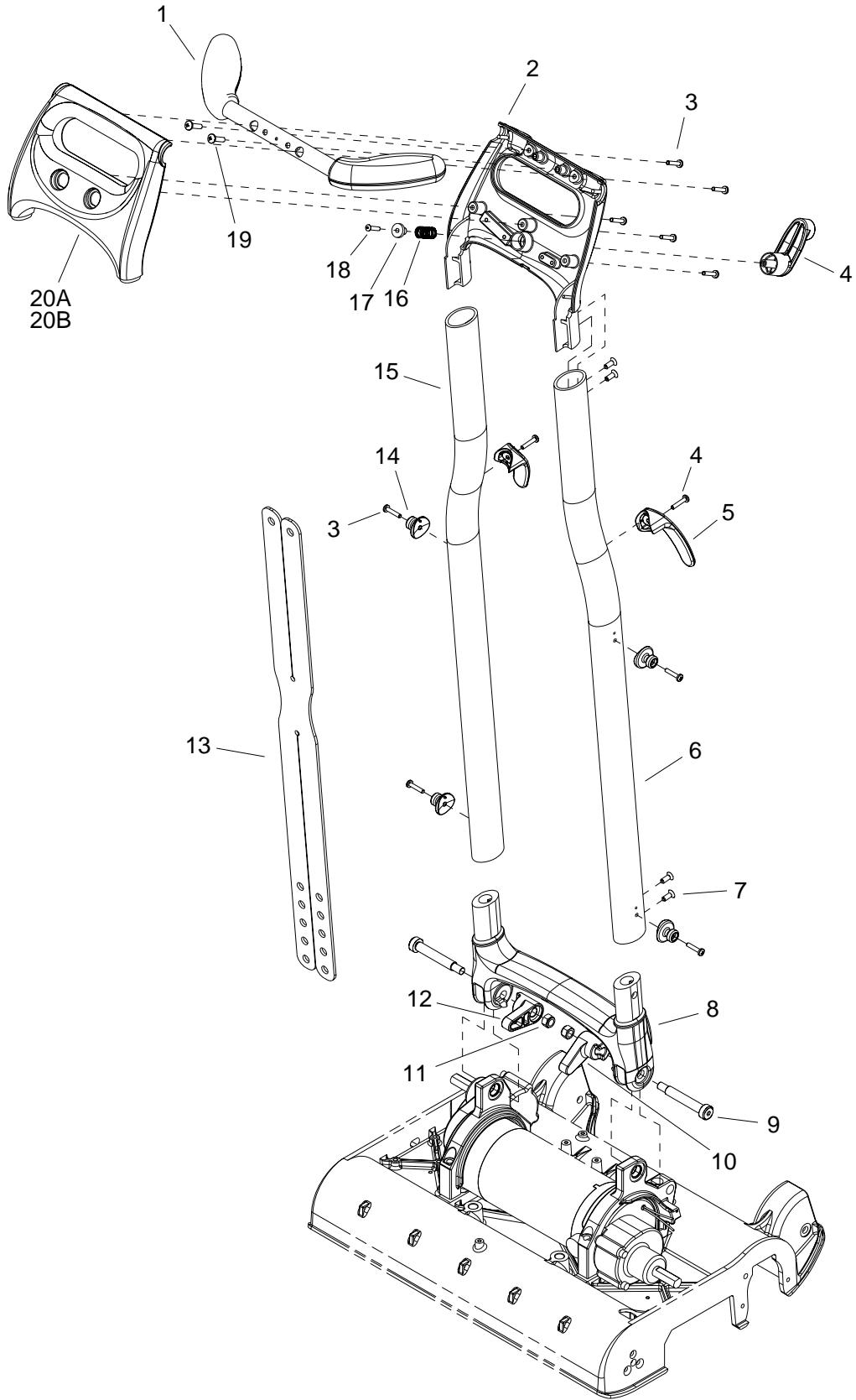
FRAME



FRAME

REF	PART NO.	QTY	DESCRIPTION	SERIAL NO. FROM	NOTES:
1	78952	1	TRAY, IRENEW MINI		
2	34450	1	FRAME, 3.5", SINGLE MOTOR		
3	05262	1	ASSY, COVER, INSULATION		
4	70882	1	SCR, M4X20, PPHMS, ISO7045, SST		
5	58009	1	NUT, M4X0.7, U-CLAMP, 3MM PANEL		
6	05263	1	ASSY, DOME, INSULATION		
7	70920	3	SCR, M4X40, PPHMS, ISO7045, SST		

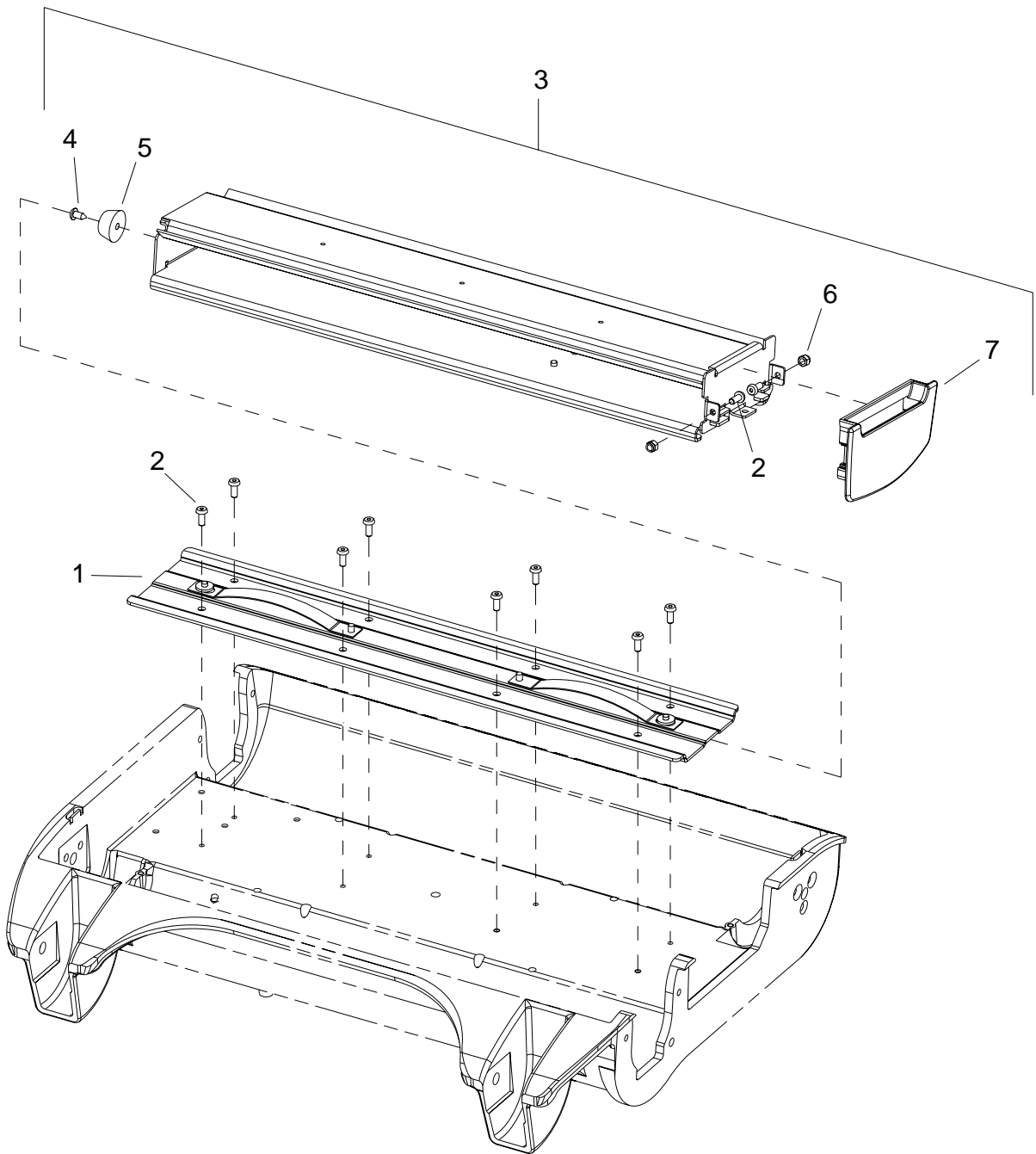
HANDLE



HANDLE

REF	PART NO.	QTY	DESCRIPTION	SERIAL NO. FROM	NOTES:
1	38337	1	GRIP, HANDLE, OVERMOLD		
2	38324	1	CONSOLE, BOTTOM		
3	70882	11	SCR, M4X20, PPHMS, ISO7045, SST		
4	38326	1	CORD HOOK, UPPER		
5	38325	2	CORD HOOK, LOWER		
6	38321	1	HANDLE, EXTRUSION, LEFT		
7	70922	8	SCR, M5X12, CSK, OVL HD, ISO7047, SS		
8	38354	1	PIVOT CASTING		
9	70948	2	SCR, 10M8X55, SHLD, ISO7379, BLK		
10	279992	1	LIFTING CAM, LEFT		
11	57507	2	NUT, M8, LK, ISO7040, SST		
12	279993	1	LIFTING CAM, RIGHT		
13	730382	1	STRAP, SPRAYER HOLD DOWN		
14	38332	4	RUBBER STRAP HOOK		
15	38322	1	HANDLE, EXTRUSION, RIGHT		
16	730414	1	SPRING, COMP, 11.56D X 19.05L		
17	67620	1	RETAINER, SPRING, CORD HOOK		
18	70914	1	SCR, KA40X20, OHCS, WN1412, PL		
19	70883	2	SCR, M5X20, PPHMS, ISO7045, SST		
20A	38327	1	CONSOLE TOP		120V ONLY
20B	38373	1	CONSOLE, TOP, 230V, IMIE		230V ONLY

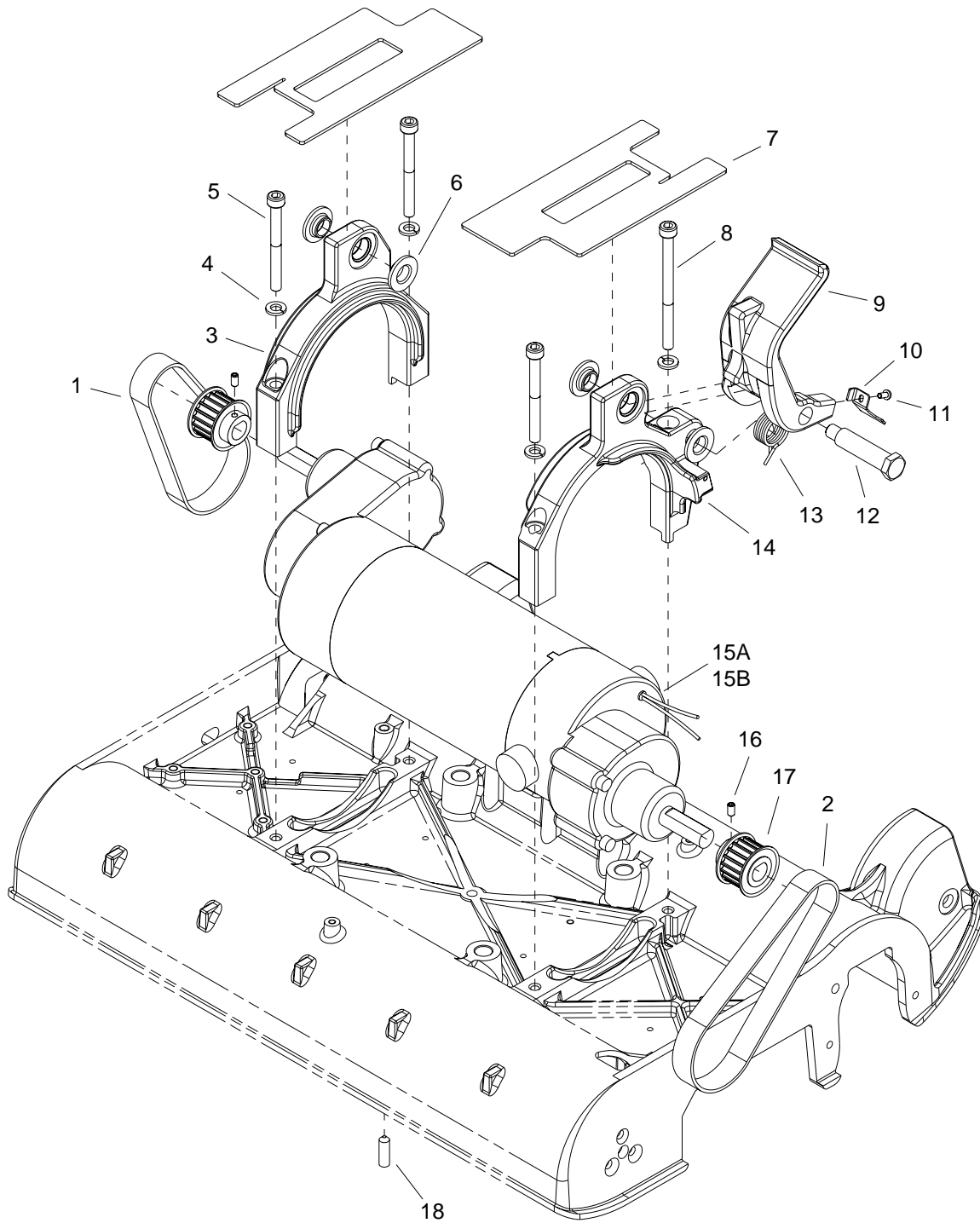
HOPPER



HOPPER

REF	PART NO.	QTY	DESCRIPTION	SERIAL NO. FROM	NOTES:
1	41584	1	ASM, GUIDE, HOPPER		
2	70919	10	SCR, M4X10, BSHCS, ISO7380, SST		
3	41585	1	ASM, HOPPER FRAME & PLATE		
4	70933	1	SCR, 4.2 X 9.5, TAP, ISO 7049C, ZN		
5	140977	1	BUMPER, STOP, HOPPER		
6	57314	1	NUT, M4, LK, ISO7040, SST		
7	270709	1	COVER, FRONT, HOPPER		

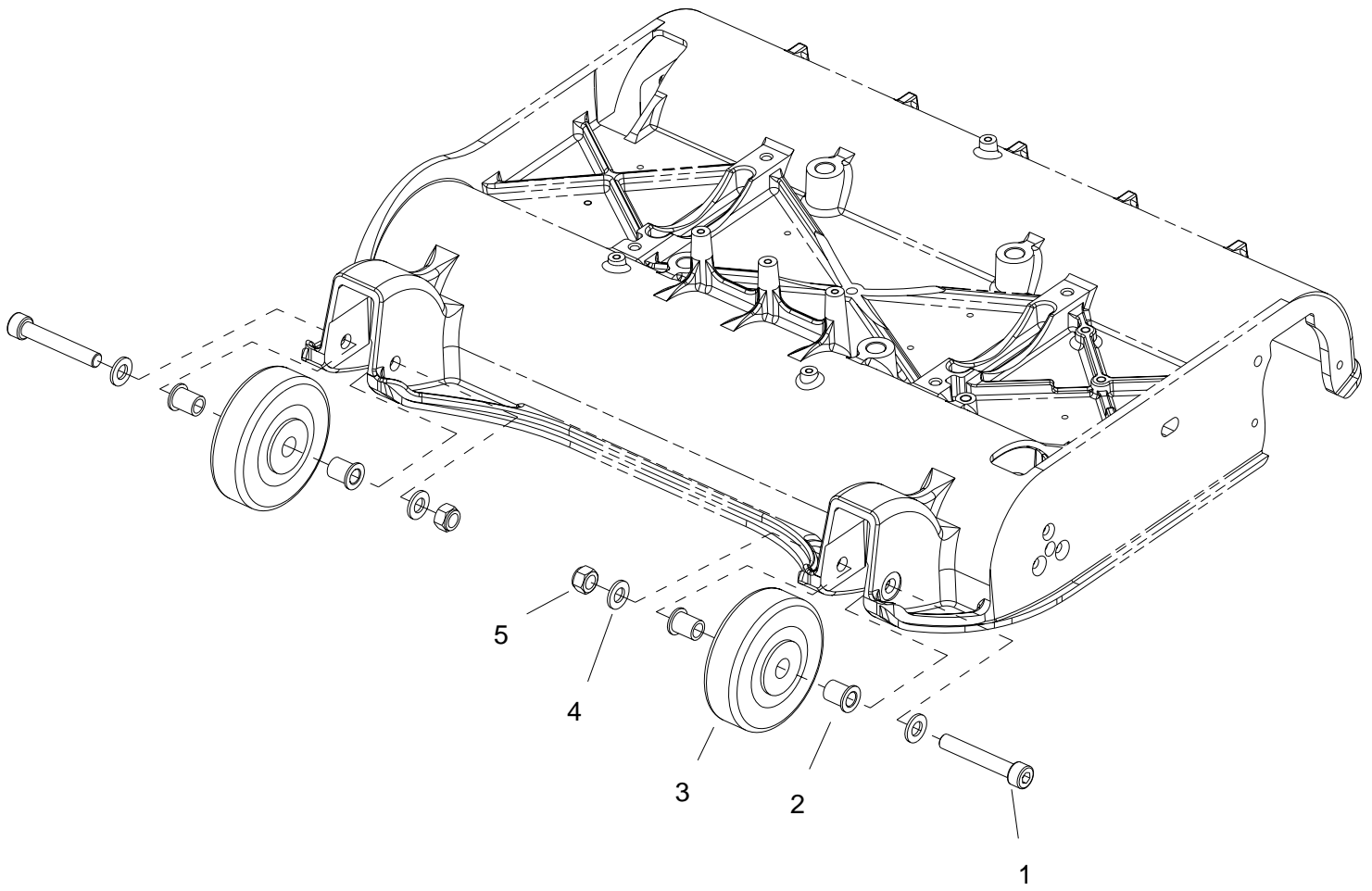
MOTOR



MOTOR

REF	PART NO.	QTY	DESCRIPTION	SERIAL NO. FROM	NOTES:
1	11058	1	BELT, HTD, 15MMX300, 60 TOOTH, RH		
2	11055	1	BELT, HTD, 15MMX325, 65 TOOTH, LH		
3	140979	1	BRKT, MTR MOUNT, RH		
4	87499	4	WASHER, SPRING LK, 6MM, DIN127B, SS		
5	70921	3	SCR, SHCS, M6X60, ISO4762, SST		
6	34451	4	FLANGE, BRG, PIVOT CASTING		
7	62647	2	CVR PLATE, 1.5MM THK, PLASTIC		
8	70934	1	SCR, SHCS, M6X80, ISO4762, SST		
9	66869	1	PEDAL, FOOT, HANDLE RELEASE		
10	140973	1	BRKT, FOOT PEDAL, SWITCH		
11	70935	1	SCR, M3X6, BSHCS, ISO7380, SST		
12	70948	1	SCR, 10M8X55, SHLD, ISO7379, BLK		
13	730376	1	SPRING, TORSION, 19.38 OD		
14	140978	1	BRKT, MTR MOUNT, LH		
15A	54206	1	MOTOR, SINGLE, 3.5" DIA		120V ONLY
15B	54216	1	MOTOR, 230V, IMIE		230V ONLY
-	141057	1	BRUSH SET, 120V VAC, IM		120V & 230V, NOT SHOWN
16	70896	2	SCR, M4X8, ISO4029, CP, BLK		
17	64124	2	PULLEY, HTD, 5MM, 15W, 18T		
18	70949	1	SCR, M6X20, ISO4029, CP, BLK		

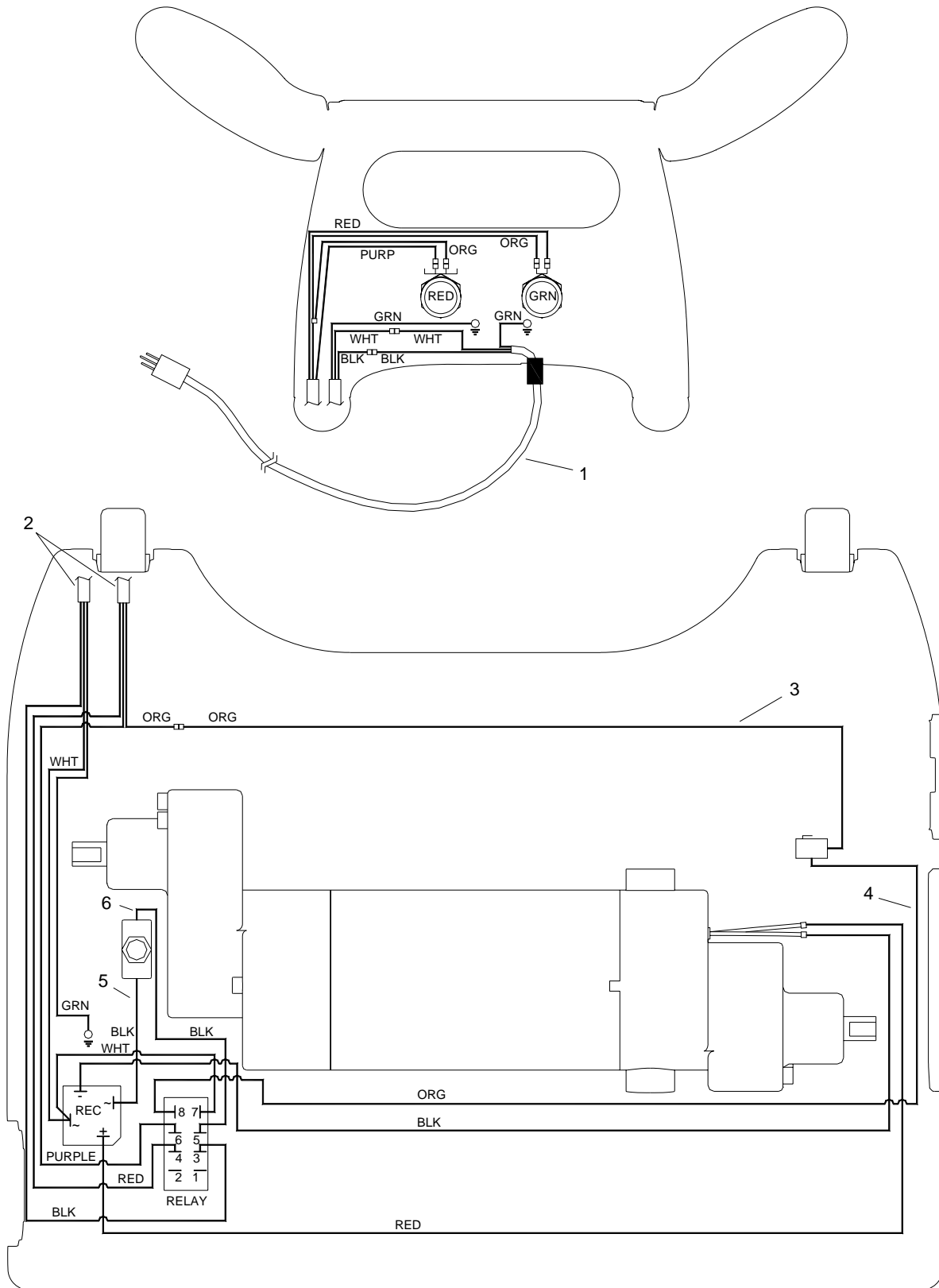
REAR WHEEL



REAR WHEEL

REF	PART NO.	QTY	DESCRIPTION	SERIAL NO. FROM	NOTES:
1	70867	2	SCR, SHCS, M8X50, ISO4762, BLK		
2	140942	4	BUSHING, 11.25MM X 8.0MM, SST		
3	89202	2	WHEEL, 3" DIA. CUSHION RUBBER		
4	87495	4	WASHER, M8, FL, ISO7089, SST		
5	57507	2	NUT, M8, LK, ISO7040, SST		

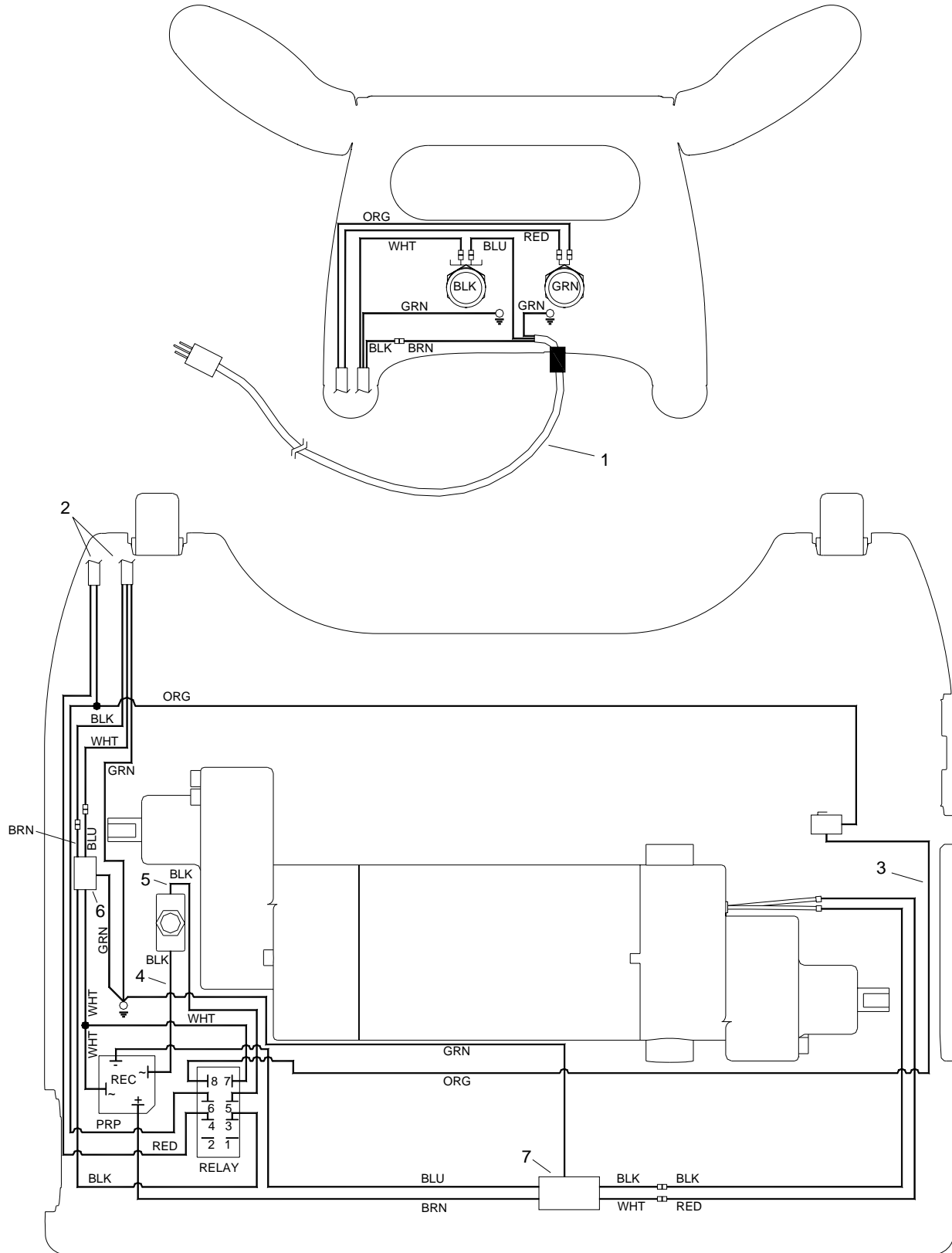
WIRING-120V



WIRING-120V

REF	PART NO.	QTY	DESCRIPTION	SERIAL NO. FROM	NOTES:
1	23729	1	CORD SET, 18/3 X 40FT SJT		
2	41563	1	HARNESS, MAIN		
3	880468	1	WIRE, 15" ORG/18 76040 X 76040		
4	880469	1	WIRE, 18" ORG/18 76040 X 76040		
5	880462	1	WIRE, 10" BLK/18 76040 X 76040		
6	880471	1	WIRE, 9" BLK/18 76040 X 76040		

WIRING-230V



WIRING-230V

REF	PART NO.	QTY	DESCRIPTION	SERIAL NO. FROM	NOTES:
1	23738	1	CORD SET, EURO 1,0MMX40 BLUE		
2	41594	1	HARNESS, MAIN, 230VAC, LMIE		
3	880469	1	WIRE, 18" ORG/18 76040 X 76040		
4	880462	1	WIRE, 10" BLK/18 76040 X 76040		
5	880471	1	WIRE, 9" BLK/18 76040 X 76040		
6	41589	1	FILTER, EMC MAIN		
7	41590	1	FILTER, EMC, BRUSH		

SUGGESTED SPARE PARTS

REF	PART NO.	DESCRIPTION	SERIAL NO. FROM	NOTES:
1	141057	BRUSH SET, MTR, 54206/54216		
2	11055	BELT, HTD, 15MM X 325, 65 TOOTH		
3	11058	BELT, HTD, 15MM X 300, 60 TOOTH		
4	12544	ASSY, BRUSH & HUB		
5	38326	CORD HOOK, UPPER		
6	730382	STRAP, SPRAYER HOLD DOWN		