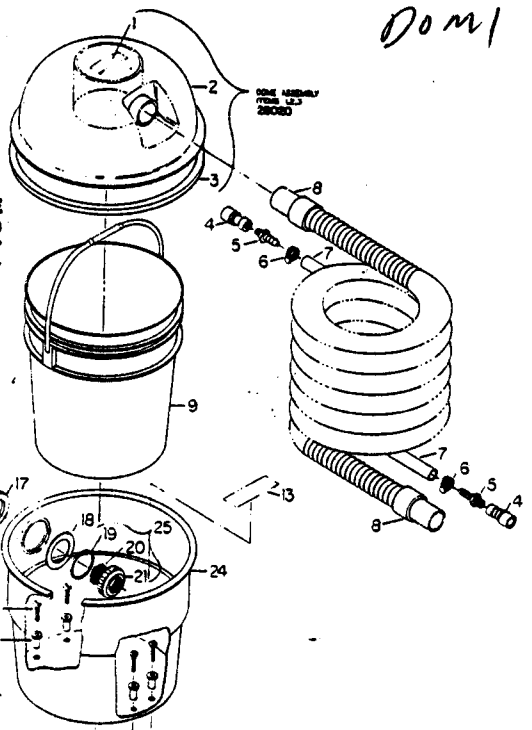
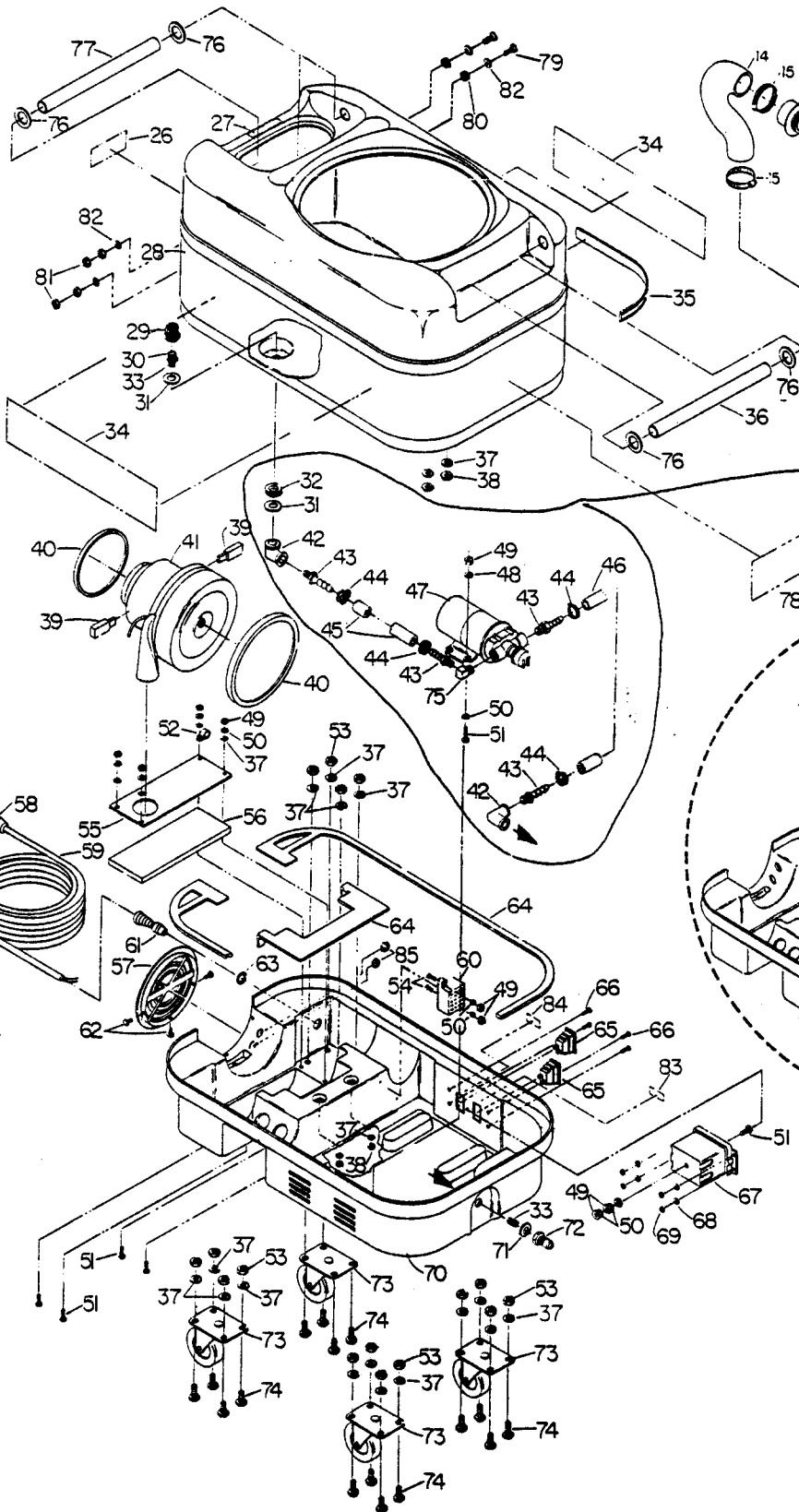


DOM 1

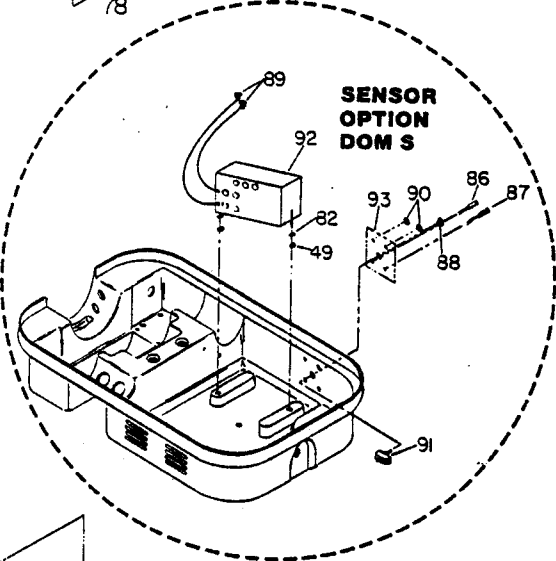
DOME AND BUCKET ASSEMBLY



CABINET ASSEMBLY

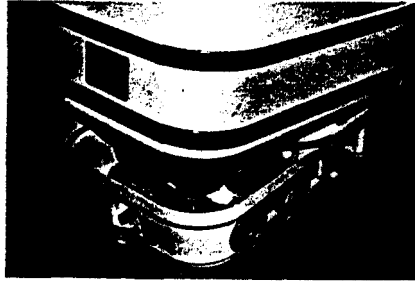


SEE PRODUCT MOD. SHEET



SENSOR OPTION DOM S

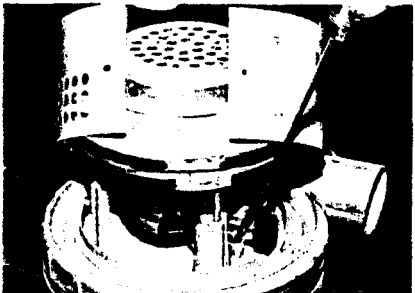
- Turn machine upright on its wheels.
- Lift cabinet assembly by its handles to separate solution cabinet from the base. Use a screwdriver to pry the sections apart if necessary.



- Lay cabinet assembly on its side. Use a box or carton the height of the base assembly to rest it on.

VACUUM MOTOR

- To remove vacuum motor, disconnect wires and the cord tie-down.
- Lift out vac motor, being careful not to damage seals.
- To inspect brushes, remove metal wraparound from the vac motor (one screw). Remove brush hold-downs. New brush length is 1". Brushes should be replaced when they reach 3/8" length, or after 750 operating hours.



- Inspect vacuum intake opening for lint. If there are large accumulations, the fan section should be disassembled and cleaned.

PUMP

To remove pump, disconnect wires, hoses and cord tie-down, and remove four screws holding pump to base.

To Inspect Or Repair Pump:

Refer to pump parts drawing in manual.

CAUTION: The pump suction cover is a nylon material and care should be taken when installing brass fittings not to cross-thread the fittings as this will result in leaking connections.

ELECTRIC BOX

To gain access to electrical components, four screws must be removed: two each on each side of the electrical box cover. Remove box to expose switches and electrical connections.

IMPORTANT: Ground wires are attached to the electrical box with ground screw.

SENSOR SYSTEM OPTION GENERAL OPERATION

The purpose of the Sensor System is to protect the pump from damage due to dry operation and to protect the vacuum from damage due to overflow of waste water. The Sensor System is functional when the sensor switch is in the ON position.

Operation of the Sensor System is dependent on low voltage electricity being conducted through water. Because the conductivity of local water and detergent can vary widely, adjustment of sensitivity is provided to enable you to adjust to your own local conditions and chemicals. The pump adjustment screws are located to the left of the pump and vacuum switches.

The Sensor System is sensitive to **two** conditions:
PUMP

Two metallic probes are present in the bottom of the solution tank. When approximately one inch or more of cleaning solution is present in the tank, a low voltage current passes between the two probes. If the level of solution drops below this point the current between the probes is interrupted and, as a result, the machine will shut off. The red indicator light under the adjusting screw will also light up indicating that lack of cleaning solution has caused the sensor to operate.

VACUUM

Two metallic probes are located in the bottom of vacuum tank well. In normal machine operation, these probes are dry and no current flows. However, if moisture is present from excess foam or from bucket overflow, low voltage current will flow causing the sensor to shut the machine off. The red indicator light under the adjusting screw will light up indicating that the vacuum chamber is filled.

If the Sensor System shuts off the machine as described above, both Pump and Vacuum are shut down, not just one or the other.

The sensor switch allows the machine to be used to vacuum out the solution tank at the end of a cleaning job. However, care must be exercised that the pump is not operated when the solution tank is being emptied.

The sensor switch may also be used in event of a malfunction of the Sensor System. In that event, care must be exercised to maintain an adequate supply of cleaning solution and not to overflow the waste-water bucket.

SENSOR SYSTEM ADJUSTMENT PROCEDURE

Clockwise rotation of either adjustment screw increases sensitivity. However, remember that for normal operation the Pump Sensor must sense solution and that the Vacuum must not sense water. Also, clear water is not a good electrical conductor. Therefore, always adjust your machine with normal cleaning solution, not plain water.

- Fill the solution tank with normal cleaning solution. Turn the Sensor switch ON.
- Turn the Pump adjustment fully to the right (clockwise) = maximum sensitivity. Turn the Vacuum adjustment fully to the left (counterclockwise) = minimum sensitivity. Turn the Pump switch on. The pump motor should now operate.
- Turn the Pump adjustment slowly to the left (counterclockwise) just to the point that the Sensor System operates (pump shuts off). Then turn back approximately 1/4 turn to the right (clockwise) with the pump running.
- Place a rag dampened with cleaning solution on top of the two metallic sensors in the well at the bottom of the vacuum tank. Slowly turn the vacuum adjustment to the right just to the point where the sensor operates (pump shuts off). The Pump and Vacuum sensors are now adjusted.

In actual operation you may wish to increase or decrease the sensitivity of the system particularly in the vacuum chamber. Make the adjustments in increments no greater than 1/4 turn in order to maintain adequate operation.

CHEMICALS

The ABS plastic used in the tank is suitable for use with most carpet cleaning chemicals. But it is susceptible to chemical attack from some cleaning substances, such as hydrocarbon solvents and chlorinated bleaches. These noncompatible materials are not of the type normally used for carpet cleaning.

SUITABLE CHEMICALS

Alkalis
Clorox II Bleach*
Defoaming Agents
Detergents
Ethylene Glycol
Hydroxides
Oxygen Bleaches
Soaps
Sta-Puf Fabric Softener*
Vinegar
White Monday Bleach*
*Registered Trademark

NONCOMPATIBLE CHEMICALS

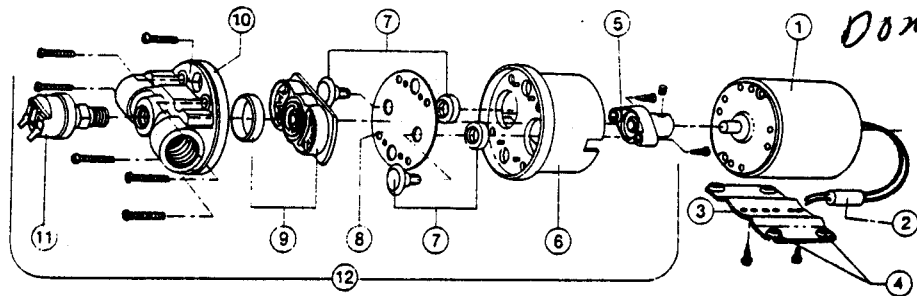
Aldehydes
Aromatic Hydrocarbons
Butyls
Carbon Tetrachloride
Clorox*
Chlorinated Bleaches
Chlorinated Hydrocarbons
Lysol*
Methyls (MEK)
Perchloroethylene (perc)
Phenols
Trichloroethylene

DOMINATOR PARTS LIST

KEY	PART NO.	DESCRIPTION	KEY	PART NO.	DESCRIPTION	KEY	PART NO.	DESCRIPTION	KEY	PART NO.	DESCRIPTION
1	50041	Dome Label	25	34013	Filter Asm. Recovery Bucket	47A	85010	Pump & Motor, 230V 50 Hz	71	87010	Washer, 9/16 Flat
2	28012	Dome	26	50052	Label, Tank Warning	48	87002	Washer, #8 Flat	72	56012	Nipple, Quick Dis. Spg. Loc.
3	35016	Gasket, Dome	27	50043	Label, Tank - Never Allow--	49	57008	Hex Nut, 8-32	73	18011	Caster
4	22015	Coupler, Quick Disc.	28	75063	Solution Cabinet Asm	50	87007	Lock Washer, #8 Ext. Tooth	74	70015	Screw, 1/4-20 x 3/4 HHMS
5	40009	Hose Barb, 1/4 MPT x 1/4 HB	29	73063	Strainer, Solution	51	70013	Screw, 8-32 x 3/4 RHMS	75	31026	St. El., 3/8 M x 3/8 FPT
6	20016	Hose Clamp	30	14076	Hex Bushing, 3/8 MPT x 1/4" FPT	52	20005	Cable Clamp	76	57016	Nut, 7/8 Pushlock
7	99208	Hose, Solution - 1/4 x 16' Long	31	87015	Washer	53	57047	Nut, 1/4 - 20 Nylock	77	38027	Handle, 13 3/8" x 7/8"
8	27167	Hose Cuff, S-BOR	32	38008	Grommet	54	70045	Screw, 8-32 x 1" PHMS	78	50187	Label, DOM --W--
9	14043	Bucket, 5 Gal. Recovery	33	56014	Nipple, 1/4 Brass Close	55	27046	Cover, Vac Exhaust	79	70025	Screw, 10-32 x 3/4 HHMS
10	39115	Vac Hose Asm. 16 ft. S-BOR	34	50185	Label, DOM Main Blu/Silver	56	34043	Acoustic Pad	80	38009	Grommet, 3/16" ID Rubber
11	39119	Solution Hose Asm. 16 ft.	35	78070	Bumper Strip, (7 1/2 ft.)	57	36017	Grille	81	57014	Nut, 10-32 Hex
12	39121	Vac & Sol Hose Combination	36	38026	Handle, 11 7/8" x 7/8"	58	28006	Cord End	82	87018	Washer, 3/16" Flat
13	50072	Label, Recovery Tank Inst.	37	87013	Washer, 1/4" Flat	59	23012	Power Cord Asm. 25 ft. 14-3	83	50029	Label, Pump
14	39081	Hose, Vac Intake Preformed	38	57006	Nut, 1/4 - 20 Hex	60	14017	Block, 115 Terminal	84	50028	Label, Vacuum
15	20019	Hose Clamp, 2"	39	14035	Brush Set, Vac Motor	61	73127	Strain Relief	85	73067	Screen, 6 Tab 1" Dia. Alum.
16	04002	Adapter, Vac Intake	40	47046	Gasket Kit, Vac Motor	62	70024	Screw	86	51006	Light, Vacuum Sensor Red
17	36010	Grommet, 2" Rubber	41	53042	Vac Motor, 115V 60 Hz	63	87001	Washer, Strain Relief	87	51007	Light, Pump Sensor Yellow
18	87019	Washer, 2" Flat	41A	53039	Vac Motor, 230V 50 Hz	64	47045	Gasket Kit, Base Seal	88	57017	Nut, 15/32" Hex (Toggle Sw)
19	59004	O' Ring	42	31018	Elbow, 1/4" Brass	65	72008	Switch	89	66014	Potentiometer, Sensor Adjust
20	73085	Intake Screen	43	40013	Hose Barb, 3/8 MPT x 1/2 HB	66	70080	Screw, 6-32 x 1/2 PH Nylon	90	57020	Nut, 3/8-32 Hex
21	57033	Nut, 1 1/2" PVC	44	20018	Hose Clamp	67	14016	Electrical Box	91	72016	Switch, Toggle
22	70049	Screw, 1/4 - 20 x 1 1/2	45	39141	Hose, Pump Inlet	68	87026	Lock Washer, #8 Ext. Tooth	92	73012	Sensor Board, 115V
23	57046	Well Nut, With Washer	46	39050	Hose, Pump Outlet	69	57012	Nut, 6 - 32 Hex	92A	73013	Sensor Board, 230V
24	75018	Recovery Tank PTD, Alum.	47	65018	Pump & Motor, 115 V 60 Hz	70	08017	Base, ABS MCHD	93	50104	Label, Sensor

TROUBLE SHOOTING CHART

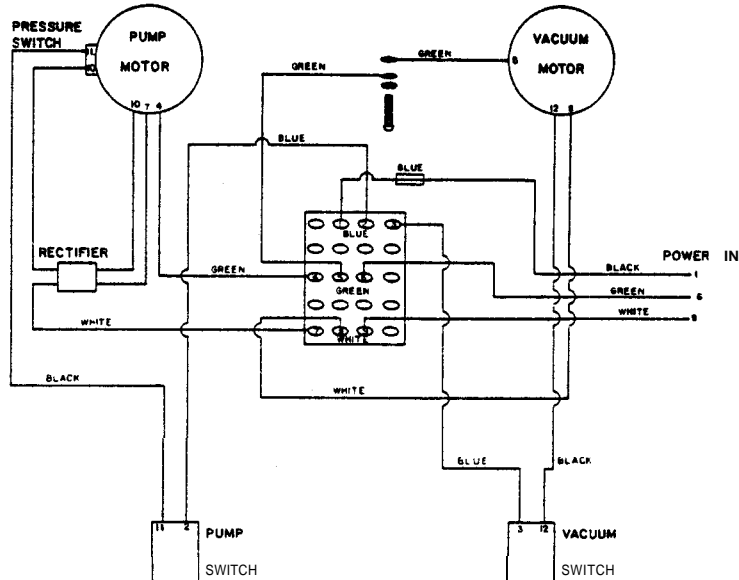
PROBLEM	POSSIBLE CAUSE	SOLUTION
No power to machine	Dead electrical circuit	Check building circuit breaker or fuse box
	Power switch failure	Replace
	Faulty electrical cable	Replace
Electrical shock.	Equipment not grounded	On 3 pronged adapter, be sure ground wire is secured
Motor speed varies or doesn't run.	Motor worn-out	Replace
Loss of vacuum.	Loose vacuum dome	Center and seal dome over tank
	Crack in dome or defective glue joint	Replace or resal using acrylic plastic cement only
	Lint of dirt clogging vacuum screen	With power off, clean screen
	Loose cuffs on vacuum hose	Tighten cuffs turning counterclockwise
	Vacuum motor seals leaking	Replace
	Floor tool vacuum chamber plugged	Wash out with hose Pick lint out with wire
	Broken vac hose	Replace
	Damaged dome gasket	Replace
	Worn-out vac motor	Replace
	Corrosion on fittings	Clean fittings with steel wool Soak in vinegar solution Lubricate lightly with silicon lube
Hose quick disconnect hard to insert.	Severe soil conditions	Make more than one pass at right angle to first pass
Not getting carpet clean.	(See listings under loss of vacuum heading)	Check vacuum system for loss of vacuum
Carpet too wet.	Leaving carpet too wet	Reduce amount of chemical Check label directions for proper concentration
Carpet browning.	Too much chemical in solution	Go over carpet with browning prevent solution only
Solution problems.	Light carpet with no brown prevention	Faulty or plugged
	Solution hose quick disconnects	Remove and examine Replace if necessary
Solution won't shut off.	Detective or worn out pump	Repair or replace
	Faulty floor tool solution valve	Repair or replace



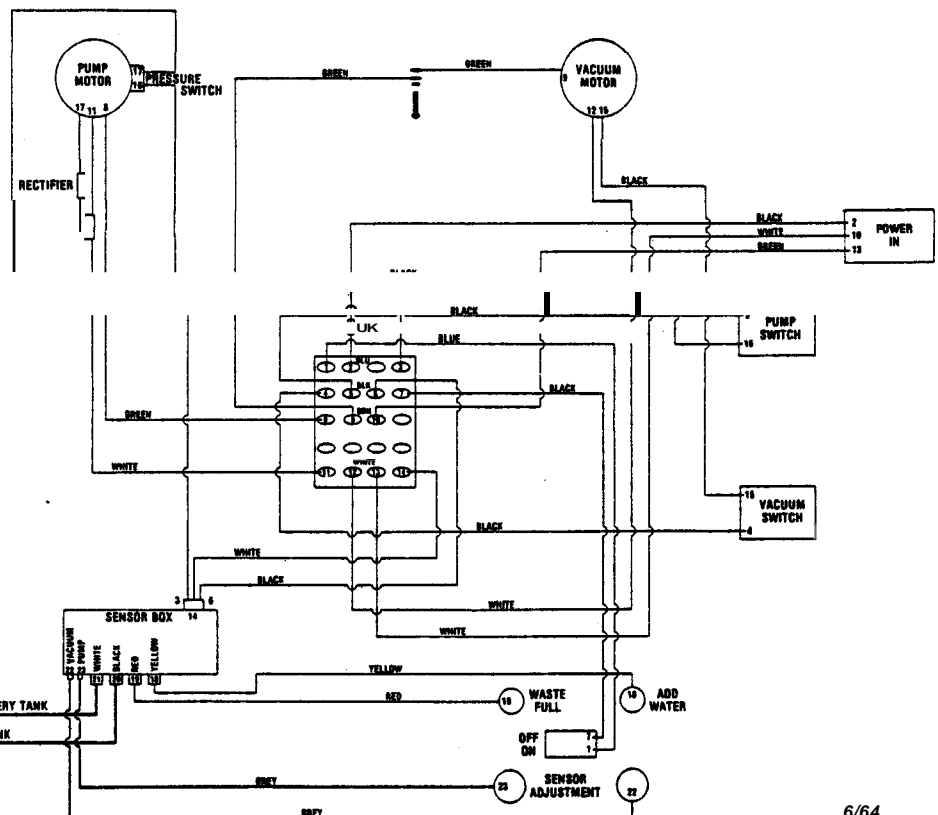
PUMP PARTS LIST

KEY	PART NO.	DESCRIPTION	KEY	PART NO.	DESCRIPTION
	65018	Pump and Motor Assy., 110V	4	36086	Grommet (set of 4)
	65010	Pump and Motor Assy., 230V	5-7-8-9	47015	Kit, Pump Repair
1	53016	Motor, 115V	6	27057	Bearing Cover
1A	53017	Motor, 230V	10	41010	Pump Housing
2	67003	Rectifier Assy.	11	72017	Pressure Switch
3	62023	Plate, Motor Mounting	12	65016	Pump Complete

DOMINATOR WIRING DIAGRAM



DOM S SENSOR SYSTEM WIRING DIAGRAM



LIMITED WARRANTY

WINDSOR warrants to the original purchaser/user that this product is free from defects in workmanship and materials under normal use and service for a period of one year from date of purchase. WINDSOR will, at its option, repair or replace without charge, except for transportation costs, parts that fail under normal use and service when operated and maintained in accordance with the applicable operation and instruction manuals. This warranty does not apply to normal wear, or to items whose life is dependent on their use and care, such as cords, switches, hoses, rubber parts, electric motor parts, etc.

This limited warranty is in lieu of all other warranties, expressed or implied, and releases WINDSOR from all other obligations and liabilities. It is applicable only in the U.S.A. and Canada, and is extended only to the original user/purchaser of this product. WINDSOR is not responsible for costs for repairs performed by persons other than those specifically authorized by WINDSOR. This warranty does not apply to damage from transportation, alterations by unauthorized persons, misuse or abuse of the equipment, use of noncompatible chemicals, or damage to property, or loss of income due to malfunctioning of the product.

If a difficulty develops with this machine, you should contact the dealer from whom it was purchased.



1351 W. Stanford Ave.
Englewood, CO 80110
303/762-1800
TWX 910-931-0565

