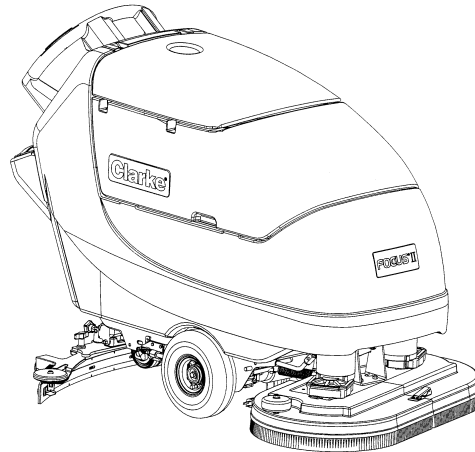


---

# Clarke®

## FOCUS® II MID-SIZE AUTOSCRUBBER®

Disc 26 / Disc 28 / Disc 34  
*BOOST® 28* | *BOOST® 32*  
Cylindrical 28



### Parts List

Active Models: 05370A (28 BOOST), 05380A (32 BOOST), 05390A (26 Disc), 05400A (28 Disc), 05410A (34 Disc),  
05420A (28 Cyl), 56383304 (28 Disc), 56383986 (26 Disc NYCTA)  
Obsolete Models: 05420C(28 Cyl), 56380651(28 BOOST), 56380657(26 Disc), 56380658(28 Disc), 56380659(34 Disc),  
05370C(28 BOOST), 05380C(32 BOOST), 05390C(26 Disc), 05400C(28 Disc), 05410C (34 Disc)



## TABLE OF CONTENTS

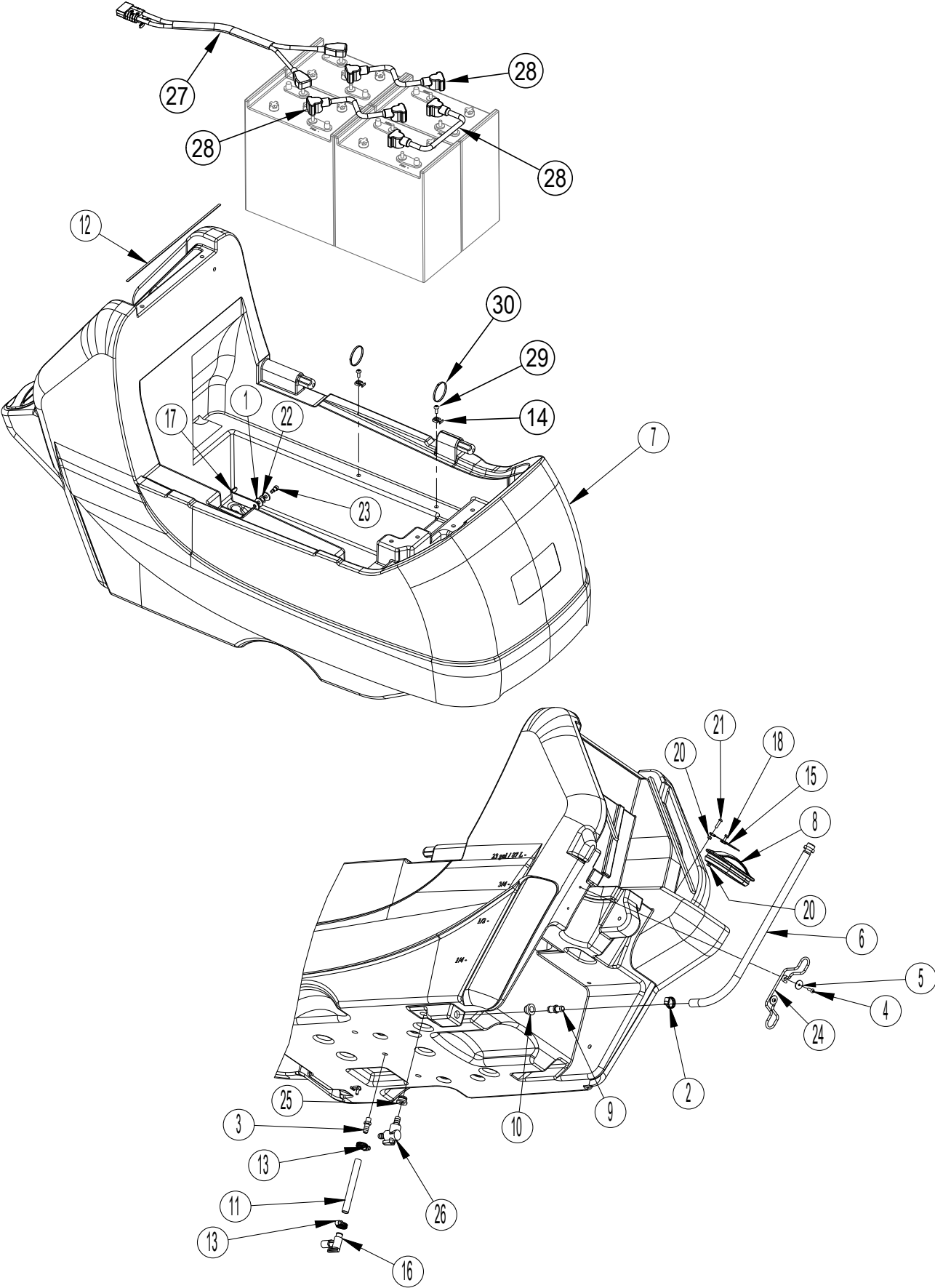
DESCRIPTION	PAGE
Solution Tank Assembly .....	2-3
Recovery Tank Assembly .....	4-5
Handle Assembly .....	6-7
Electrical Box Assembly .....	8-9
Squeegee Lift Holder Assembly .....	10-11
Squeegee Assembly (32.5") .....	12-13
Squeegee Assembly (35") .....	14-15
Squeegee Assembly (41") .....	16-17
Frame Assembly .....	18-19
Brush Head Assembly (Disc 26) .....	20-21
Brush Head Assembly (Disc 28) .....	22-23
Brush Head Assembly (Disc 34) .....	24-25
Brush Head Assembly (BOOST 28) .....	26-27
Brush Head Assembly (BOOST 32) .....	28-29
Brush Head Assembly (Cylindrical) .....	30-31
Chemical Mixing Kit .....	32-33
Wiring Diagram .....	34-35
Wiring Diagram-NYCTA Model 56383986 Only .....	36-37
Connection Diagram .....	38
Accessories .....	39

### WHEN ORDERING PARTS

- \* Use the part numbers from the "Ref. No." columns in this parts list.
- \* Specify the model number and serial number of the machine.
- \* Use the space below to record the model number and serial number for future reference.

Model No. \_\_\_\_\_ Serial No. \_\_\_\_\_

# SOLUTION TANK ASSEMBLY



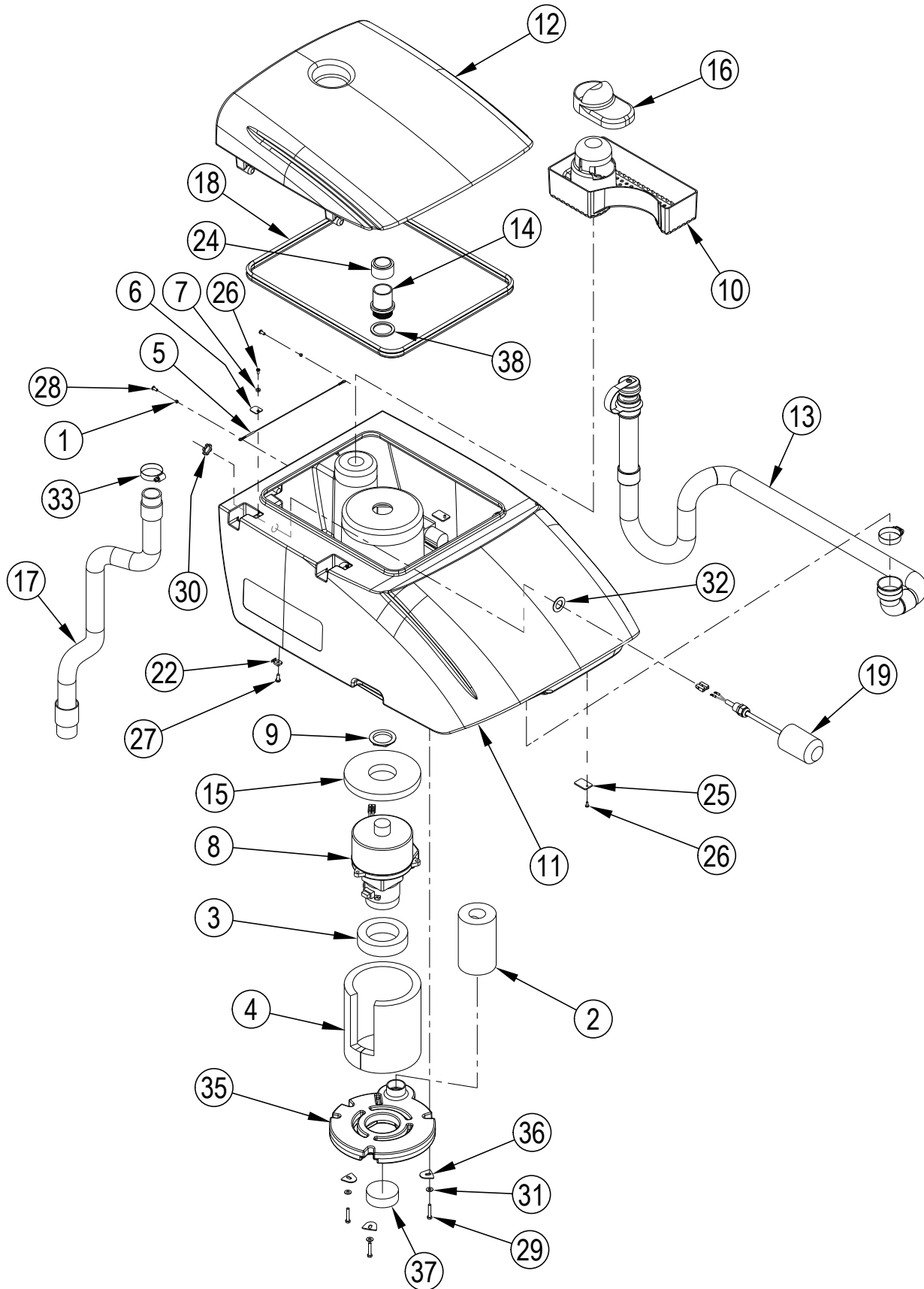
revised 6/2016

## SOLUTION TANK ASSEMBLY

<u>Item</u>	<u>Ref. No.</u>	<u>Qty</u>	<u>Description</u>
1	170860	2	Washer, Flat 5/16
2	722030	1	Clamp, Hose
3	820207	1	Adapter Sol Hose
4	964004	2	Screw M5-.8 X 16mm Pn St Ph
5	56009096	2	Wsh, Flt .193 X .875 X .060
6	56384007	1	Hose-PVC-1/2 x 20 <b>NOTE 1</b>
7	30796a	1	Tank Solution
8	30804a	1	Lid, Sol, Rear Fill
9	30882a	2	Connector, Straight
10	31242a	2	Bushing
11	34704a	1	Hose, Clear Vinyl
12	39887a	3	Gasket Handle
13	50248a	2	Clamp, Hose
14	52548a	2	Tab, 1/4" Screw
15	54773a	1	Lanyard
16	59614a	1	Valve, Battery Drain
17	61930a	1	Rod, Rec Tank Prop
18	80176a	1	Screw, M5 X 12 P.H.S.S.
19	80179a	1	Screw, M6 X 15
20	80196a	2	Nut, M5- .8 Nylock S.S.
21	80205a	1	Screw, M5 X 0.8 X 20mm Pan Head
22	80317a	1	Washer Bowed .455 Id X .740 O.D.
23	88630a	1	Bolt, M6-1 X 8 X 10mm S.H.S.B.
24	9095149000	1	Cable Support
25	9095286000	1	Gasket
26	9097028000	1	Ball Valve 90°
27	41060A	1	Cable, Battery (Ring Style)
	41080A	1	Cable, Battery (Taper Style)
28	40172A	3	Cable, Series (Ring Style)
	41206A	3	Cable, Series (Taper Style)
29	80208A	2	Screw M6-1 X 10mm P.P.Hd
30	699202	2	Tie-Wire 935A
	[ ] 71452A	1	Label-Front

**NOTE 1:** For machines built before October 2014 (solution tank will not have level graduations 1/4, 1/2 etc.) order hose part number 30792A for replacement.

# RECOVERY TANK ASSEMBLY



revised 6/2016

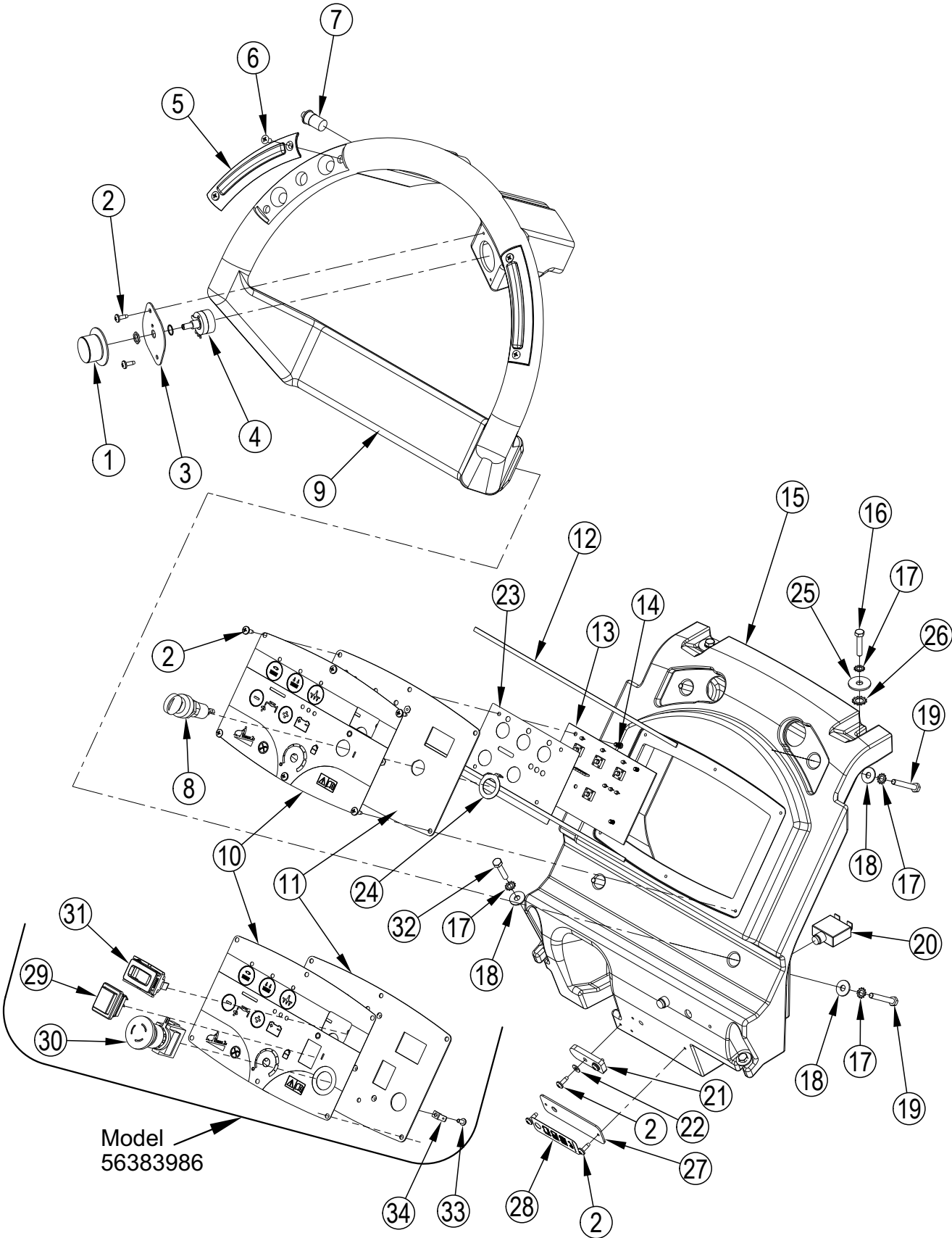
## RECOVERY TANK ASSEMBLY

<u>Item</u>	<u>Ref. No.</u>	<u>Qty</u>	<u>Description</u>
1	56151092	2	Bushing
2	9096442000	1	Pipe, Acoustic Insulation 3 Stage
3	9096490000	1	Gasket, Vacuum Motor
4	9096491000	1	Panel, Acoustic Insulation
5	9096634000	1	Cable
6	9096643000	2	Plate
7	9096679000	1	Spacer
8	56384103	1	Motor-Vac-24v-Anderson Connctr
*	56397098	1	Carbon Brush Set
9	185USP	1	Nut Die Cast Alum 1-1/2 N
10	30791A	1	Screen
11	30797A	1	Recovery Tank
12	30798A	1	Recovery Tank
13	30799A	1	Drain Hose
14	30805A	1	Tube-Stand
15	30823A	1	Gasket Vacuum Motor
16	30827A	1	Lid, Tray Debris
17	30832A	1	Suction Hose
18	39718A	1	Gasket, Recovery Lid
19	40002A	1	Switch, Float Electrical
22	52548A	2	Tab, 1/4" Screw
[23]	53371A	2	Clamp, Hose ("P" Trap)
24	58069A	1	Screen, Vac Filter
25	60367A	2	Plate Retainer
26	80057A	4	Screw, M4-.7x10 Pn Phillips SS
27	80208A	2	Screw, M6 X 1.00 X 10mm Pan Head
28	80363A	2	Screw M5-.8x12 BT
29	80410A	3	Screw, 6mm X 1.00 X 35mm Lg Hex
30	82100A	1	Locknut, 1/2" Conduit
31	87026A	3	Washer, 1/4 Flat S.S.
32	87612A	1	Seal Washer 1700 Bt li
33	54774A	2	Clamp, Hose 14/32-52
[34]	699202	2	Tie-Wire 935A
35	9100001280	1	Cover-Vacuum Motor
36	9096638000	3	Plate Cover
37	56344168	1	Filter
38	187B	1	Washer Flat 1-3/4 Id X 2-1
[ ]	71388A	2	Label-Clarke

\* = Optional, Not Included

[ ] = Not Shown

# HANDLE ASSY



Model  
56383986

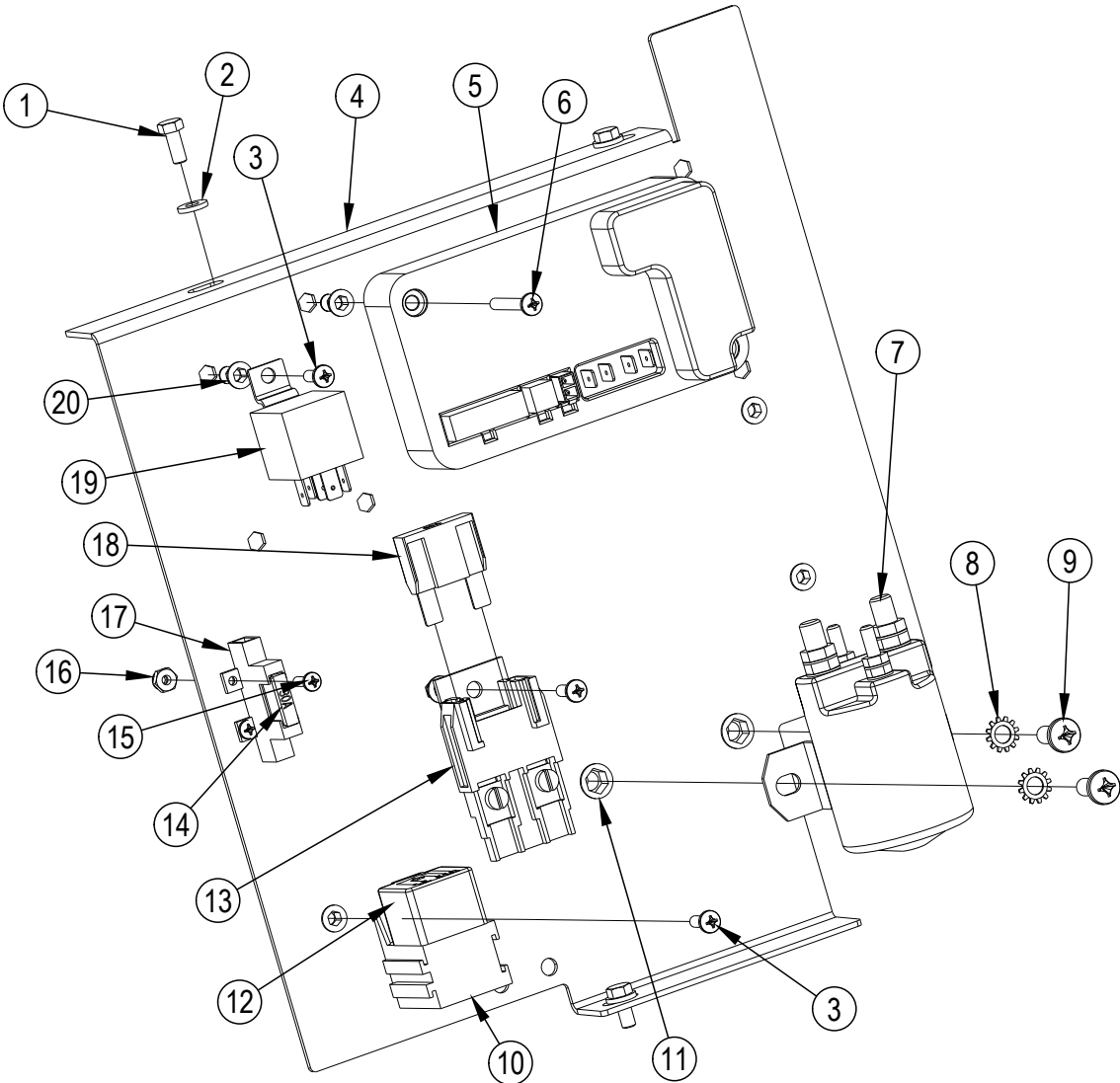


**HANDLE ASSY**

<b>Item</b>	<b>Ref. No.</b>	<b>Qty</b>	<b>Description</b>
1	50962A	1	Knob, Speed Control
2	962957	12	Screw, 10-16 x 1/2 Self Tap
3	61922A	1	Retainer, 5K Potentiometer
4	41078A	1	Harness, Potentiometer Asm.
5	11131A	2	Switch, Control Handle Asm.
6	80192A	4	Screw, M5-0.8 x 10MM Oval Phil.
7	52556A	1	Switch, Push Button
8	1462888000	1	Switch, Key <b>(not used on model 56383986)</b>
9	30785A	1	Handle, Control
10	71425A	1	Decal Control <b>(Disc and BOOST)</b>
	71484A	1	Label Control Panel Cyl <b>(Cylindrical)</b>
	56383990	1	Label, Control Panel <b>(only model 56383986)</b>
11	61929A	1	Panel, Control
	56383991	1	Panel, Control <b>(only model 56383986)</b>
12	39886A	2	Gasket, Console 9.50
13	56382501	1	Function Board Service Kit
14	50267A	4	Screw, 8-32 x .375
15	30784A	1	Housing, Control
	56383904	1	Housing-Control <b>(only model 56383986)</b>
16	87902A	2	Screw, 6MM x 1.00 x 30MM LG Hex
17	980614	8	Washer, 1/4" Starlock, External
18	87007A	6	Washer Control Shaft
19	88628A	4	Screw, 6MM x 1.00 x 45MM LG Hex
20	41431B	2	Breaker Circuit 35A SCR.90 Deg <b>(Disc and BOOST)</b>
20	41422B	2	Breaker Circuit 25A SCR.90 Deg <b>(Cylindrical)</b>
21	39888A	1	Retainer, Drain Hose
22	980643	4	Washer, 7/16 OD x .036 THK
23	30831A	1	Insulator, Mylar
24	61948A	1	Washer, Tab Ground <b>(not used on model 56383986)</b>
25	980205	2	Washer, .31 I.D. x 1.06 O.D.
26	980666	2	Washer, 3/8 Starlock
27	56383897	1	Bracket-LED <b>(only used with Delta-Q onboard charger)</b>
28	56383503	1	Decal-Charger LED <b>(only used with Delta-Q onboard charger)</b>
29	47316B	1	Switch-Rocker DPST <b>(only model 56383986)</b>
30	56407130	1	Disconnect Emergency <b>(only model 56383986)</b>
31	912226	1	Meter Hour- 12V DC <b>(only model 56383986)</b>
32	80410A	2	Screw M6-1 X 35mm Hex Zinc
33	56001818	1	Scr Pan Phil 8-32 X .38 <b>(only model 56383986)</b>
34	56384028	2	Tab-Stud Mount-0.25 X Ø.171 <b>(only model 56383986)</b>
[ ]	56469384	1	Receptacle Tab .250 <b>(only model 56383986)</b>
[ ]	56384026	1	Harness-Jumper NYCTA <b>(only model 56383986)</b>
[ ]	56384027	1	Harness-Rocker NYCTA <b>(only model 56383986)</b>
[ ]	41063A	1	Harness, Key Switch <b>(not used on model 56383986)</b>
[ ]	56469382	4	Term .25 Ins Tab <b>(only model 56383986)</b>

[ ] = Not Shown

# ELECTRICAL BOX ASSEMBLY



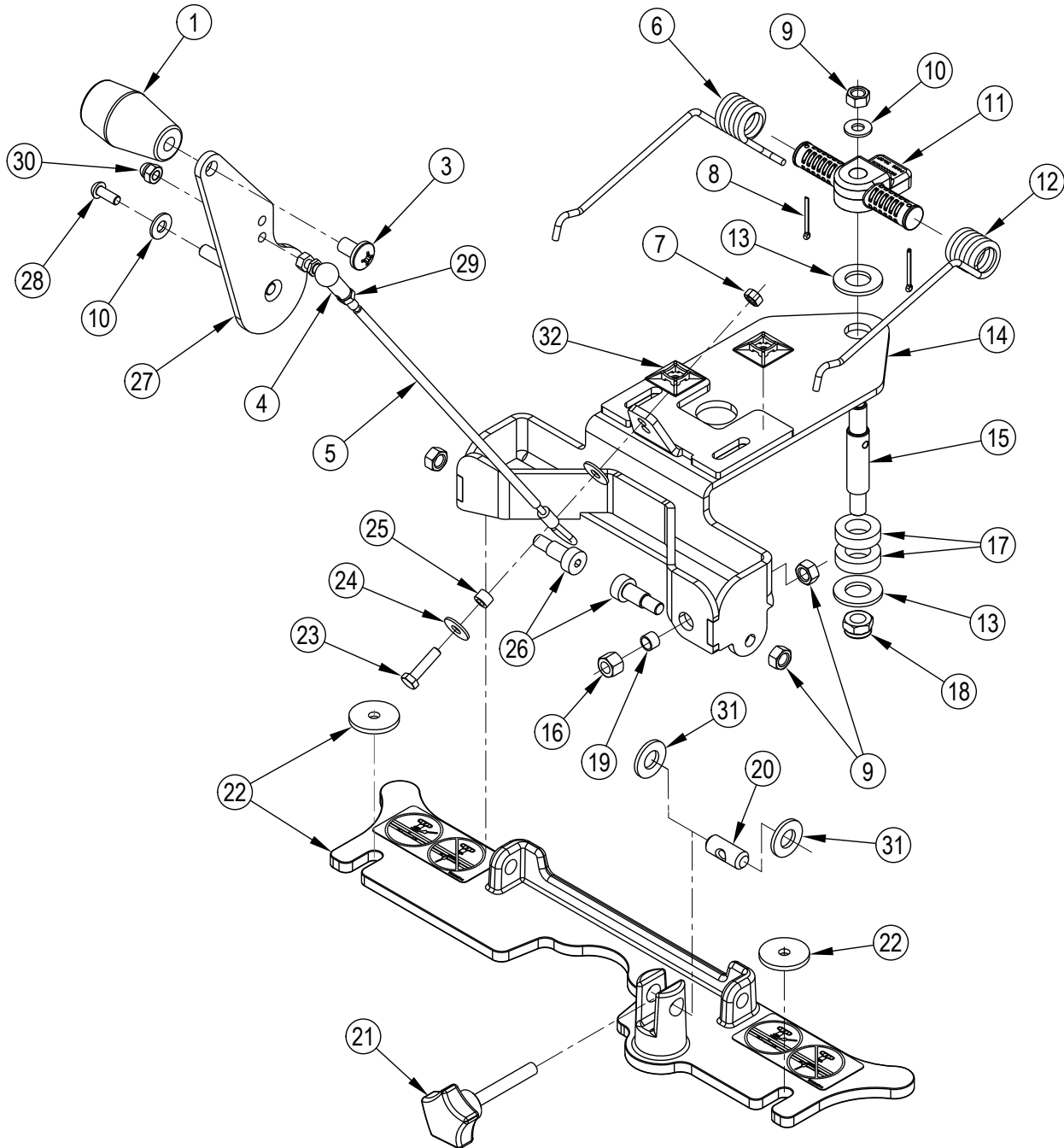
**ELECTRICAL BOX ASSEMBLY**

<b>Item</b>	<b>Ref. No.</b>	<b>Qty</b>	<b>Description</b>
1	80249A	3	Screw, M5-.8 x 12MM Hex
2	980643	3	Washer, 7/16 OD x .036 THK
3	962027	3	Screw, 8-32 x 1/2 P.H.
4	61933A	1	Plate, Electrical
5	41068B	1	Controller, I-Drive 24V Traverse
	56383989	1	Cont-I-Drive 24V Travrs NYCTA ( <b>only model 56383986</b> )
6	80380A	2	Screw, 8-32 x 1 1/4" P.H.
7	56412179	1	Contacto <sub>r</sub> 24 VDC
8	980614	2	Washer, 1/4" Starlock External
9	85391A	2	Screw, 1/4-20 x .625 Pan Hd.
10	Ref.	1	Relay Holder ( <b>included in 41061A Harness</b> )
11	54764A	2	Insert, Hex 1/4-20 UNC
12	41075A	1	Relay ( <b>Vacuum</b> )
13	Ref.	1	Fuse Holder ( <b>included in 41061A Harness</b> )
14	41073A	1	Fuse, 30A ( <b>Vacuum / see WARNING below</b> )
15	962979	2	Screw, 6-32 x 1/2 PN ST PH
16	920056	2	Nut, 6-32 E.S.N.A. Nylock
17	Ref.	1	Fuse Holder ( <b>included in 41061A Harness</b> )
18	41074A	1	Fuse, 60A ( <b>Traverse Motor / see WARNING below</b> )
19	41069B	1	Relay, i-Drive 24V Traverse
20	54763A	7	Insert, Hex #8-32 UNC
[ ]	41065B	1	Harness, Traverse
[ ]	41061A	1	Harness, Machine



**WARNING:** To reduce the risk of fire, when replacing fuse, replace only with same type and rating of fuse that comes with machine.

# SQUEEGEE LIFT HOLDER ASSEMBLY



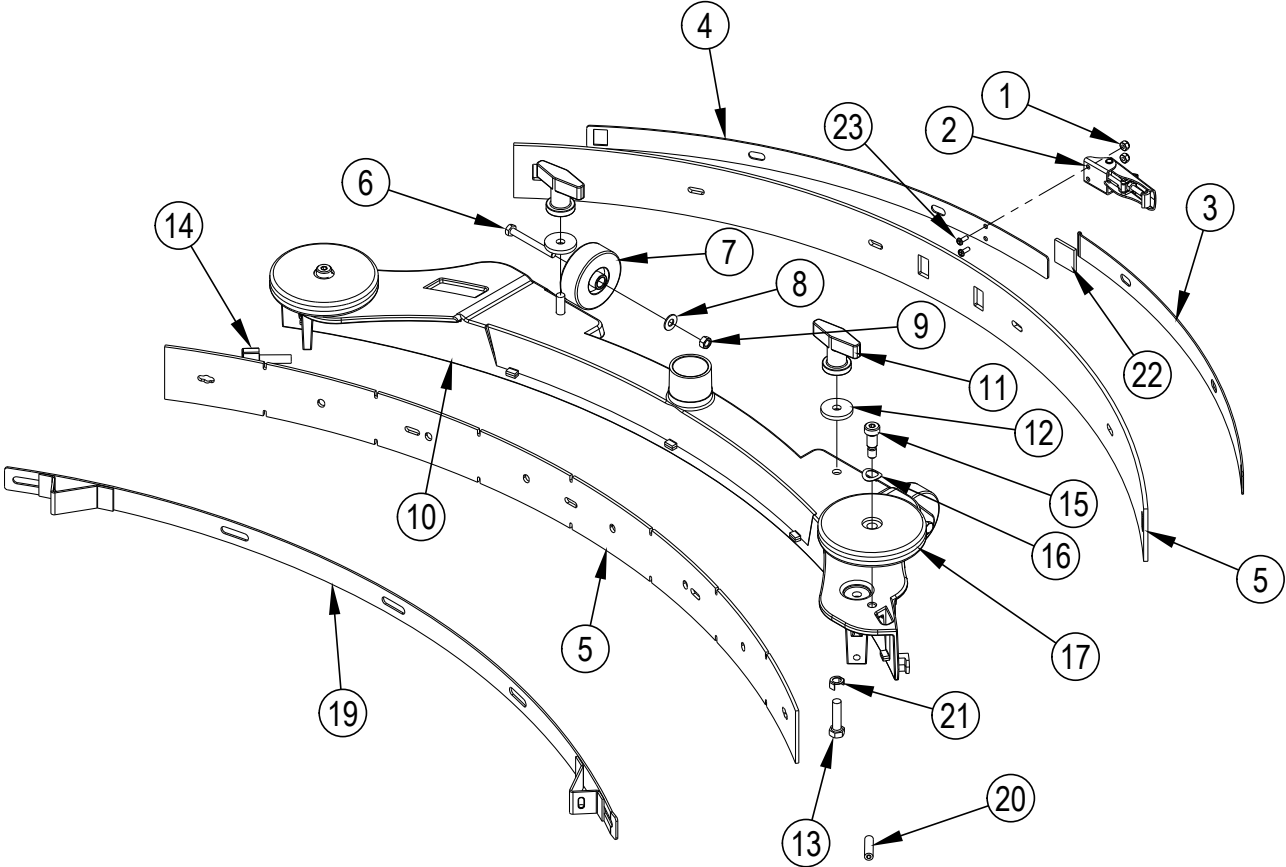
revised 9/2017

## SQUEEGEE LIFT HOLDER ASSEMBLY

<u>Item</u>	<u>Ref. No.</u>	<u>Qty</u>	<u>Description</u>
1	52557A	1	Knob, Lift
3	85389A	1	Screw, 3/8-16 x 5/8
4	1458479000	1	Joint, Ball M6
5	9097366000	1	Cable, Lift
6	9096537000	1	Spring, Squeegee Left
7	80199A	1	Nut, M6-1.00 Nylock S.S.
8	925044	2	Pin, Cotter .094 x 1.00
9	80198A	4	Nut, M8-1.25 Nylock S.S.
10	980651	2	Washer, 5/16 Flat
11	9100000515	1	Support, Squeegee Spring
12	9096538000	1	Spring, Squeegee Right
13	87613A	2	Washer, Flat .22 x .64 x .10 Nylon
14	61953A	1	Plate, Squeegee Support
15	9096497000	1	Pin, Squeegee Mounting
16	80163A	1	Nut, M8-1 Hex
17	38708A	2	Spacer
18	80223A	1	Nut, M10-1.5 Nylock
19	L08602422	1	Spacer
20	L08601509	1	Pin
21	54699A	1	Knob, M8 x 55
22	56384513	1	Squeegee Bracket Kit <b>NOTE 1 TSB-FC-2014-031</b>
23	964054	1	Screw, M6-1 x 25MM Hex
24	87007A	2	Washer
25	1462258000	1	Spacer
26	9096495000	2	Screw, Socket Head
27	61952A	1	Lever, Squeegee Lift
28	80179A	1	Screw, M6 x 15 Pan
29	80171A	1	Nut, M6 Hex
30	88640A	1	Nut, M6-1 Acorn
31	80424A	2	Washer, Flat
32	9096635000	2	Self-Adhesive Sideburns

**NOTE 1:** Squeegee Bracket Kit 56384513 used on machines after S/N 4000065931.  
Refer to TSB-FC-2014-031 for machines built prior to S/N 4000065932.

# SQUEEGEE ASSY - DISC 26 INCH



**SQUEEGEE ASSY - DISC 26 INCH**

<b>Item</b>	<b>Ref. No.</b>	<b>Qty</b>	<b>Description</b>
	10398A	1	Squeegee Assembly <b>NOTE 1</b>
1	56002907	2	Nut Hex Nyl Loc SS 6-32
2	9098321000	1	Latch Squeegee
3	9097356000	1	Support, Squeegee
4	9097357000	1	Strap, Wldmt., Squeegee
5	11333A	1	Squeegee Blade Kit 32.5 Urethane <b>NOTE 2</b>
6	88629A	2	Screw, M6-1 x 55MM Hex
7	9099133000	2	Squeegee Wheel D.60
8	87026A	2	Washer, 1/4 Flat S.S.
9	80199A	2	Nut, M6 x 1.00 Nylock S.S.
10		1	Frame, 32.5" Squeegee <b>NOTE 3</b>
11	56370711	2	Nut Thumb
12	56384502	2	Washer-Polyurethane-1.25 <b>NOTE 4 TSB-FC-2014-031</b>
13#	56003302	2	Screw, Hex THD to HD SS 5/16-18 x 1.25
14	54647A	1	Knob, M8 x 30
15	88609A	2	Screw, 5/16 x 3/8 x 5/8 SHSS
16	80317A	2	Washer, Bowed .455 ID x 7.40 OD
17	30048A	2	Guide, Wheel
19	60465A	1	Strap, Wldmt., Squeegee
20	88632A	1	Screw, Set M8-1.25 x 30MM
21	60564A	2	Shim, Screw
22	39717A	1	Pad, Squeegee
23	56002909	2	Scr Pan Phil SS 6-32 X .38

# = Revised or new since last update

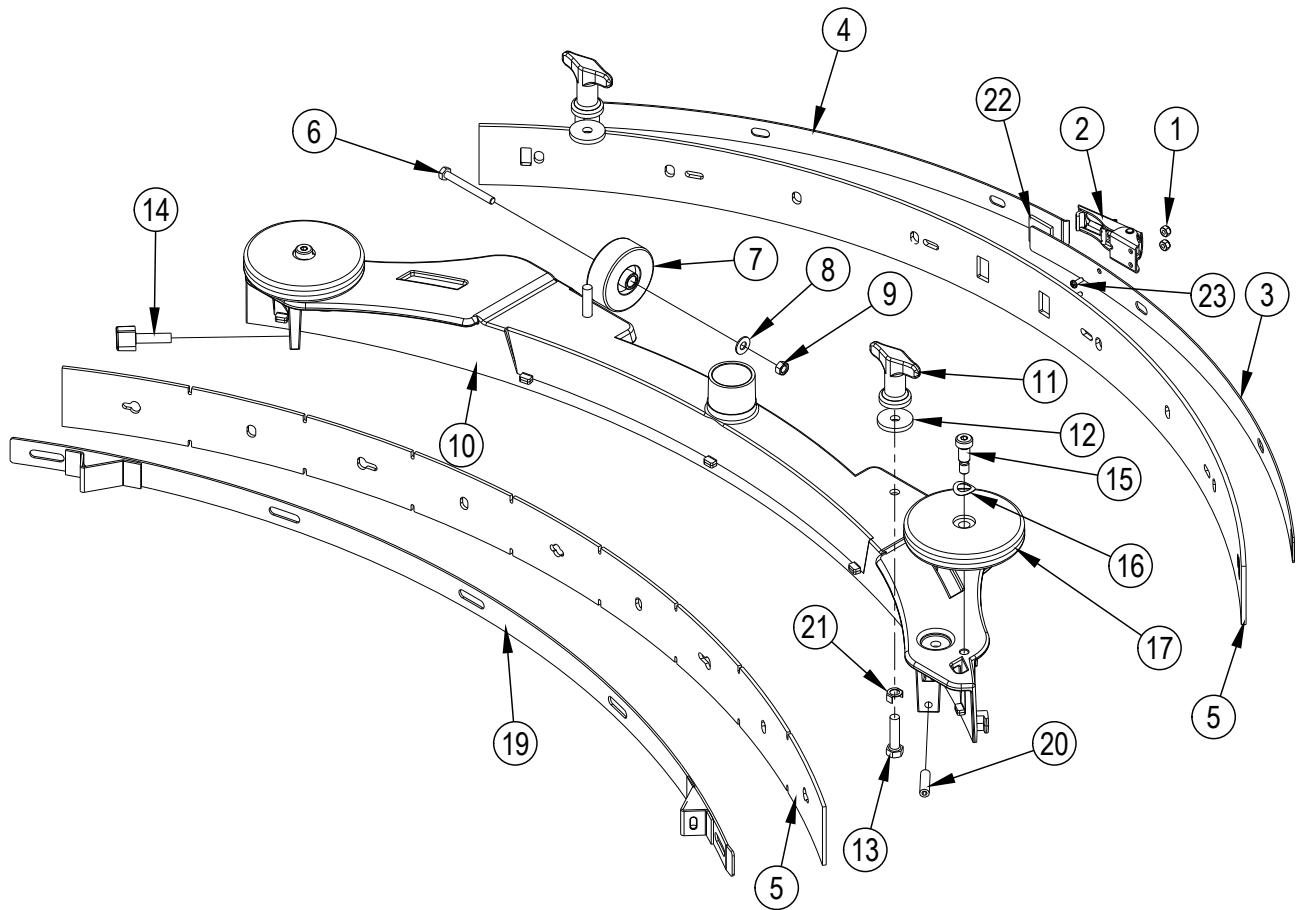
**NOTE 1:** Squeegee Assembly includes Urethane blades.

**NOTE 2:** Squeegee Blade Kit includes both front and rear squeegee blades.

**NOTE 3:** The squeegee frame is not available for sale. If you need to replace the squeegee frame please order the entire squeegee assembly 10398A.

**NOTE 4:** Polyurethane Washer 56384502 is used on machines after S/N 4000065931 and is also part the Squeegee Bracket Kit 56384513. Refer to TSB-FC-2014-031 for machines built prior to S/N 4000065932.

# SQUEEGEE ASSY - ALL 28 INCH MODELS





**SQUEEGEE ASSY - ALL 28 INCH MODELS**

<b>Item</b>	<b>Ref. No.</b>	<b>Qty</b>	<b>Description</b>
	10399A	1	Squeegee Assembly <b>NOTE 1</b>
1	56002907	2	Nut Hex Nyl Loc SS 6-32
2	9098321000	1	Latch Squeegee
3	9097361000	1	Support, Squeegee
4	9097362000	1	Strap, Wldmt., Squeegee
5	56112332	1	Blade Kit-Squeegee <b>PUNOTE 2</b>
6	88629A	2	Screw, M6-1 x 55MM Hex
7	9099133000	2	Squeegee Wheel D.60
8	87026A	2	Washer, 1/4 Flat S.S.
9	80199A	2	Nut, M6 x 1.00 Nylock S.S.
10		1	Frame, 35" Squeegee <b>NOTE 3</b>
11	56370711	2	Nut Thumb
12	56384502	2	Washer-Polyurethane-1.25 <b>NOTE 4 TSB-FC-2014-031</b>
13#	56003302	2	Screw, Hex THD to HD SS 5/16-18 x 1.25
14	54647A	1	Knob, M8 x 30
15	88609A	2	Screw, 5/16 x 3/8 x 5/8 SHSS
16	80317A	2	Washer, Bowed .455 ID x 7.40 OD
17	30048A	2	Guide, Wheel
19	60466A	1	Strap, Wldmt., Squeegee
20	88632A	1	Screw, Set M8-1.25 x 30MM
21	60564A	2	Shim, Screw
22	39717A	1	Pad, Squeegee
23	56002909	2	Scr Pan Phil SS 6-32 X .38

# = Revised or new since last update

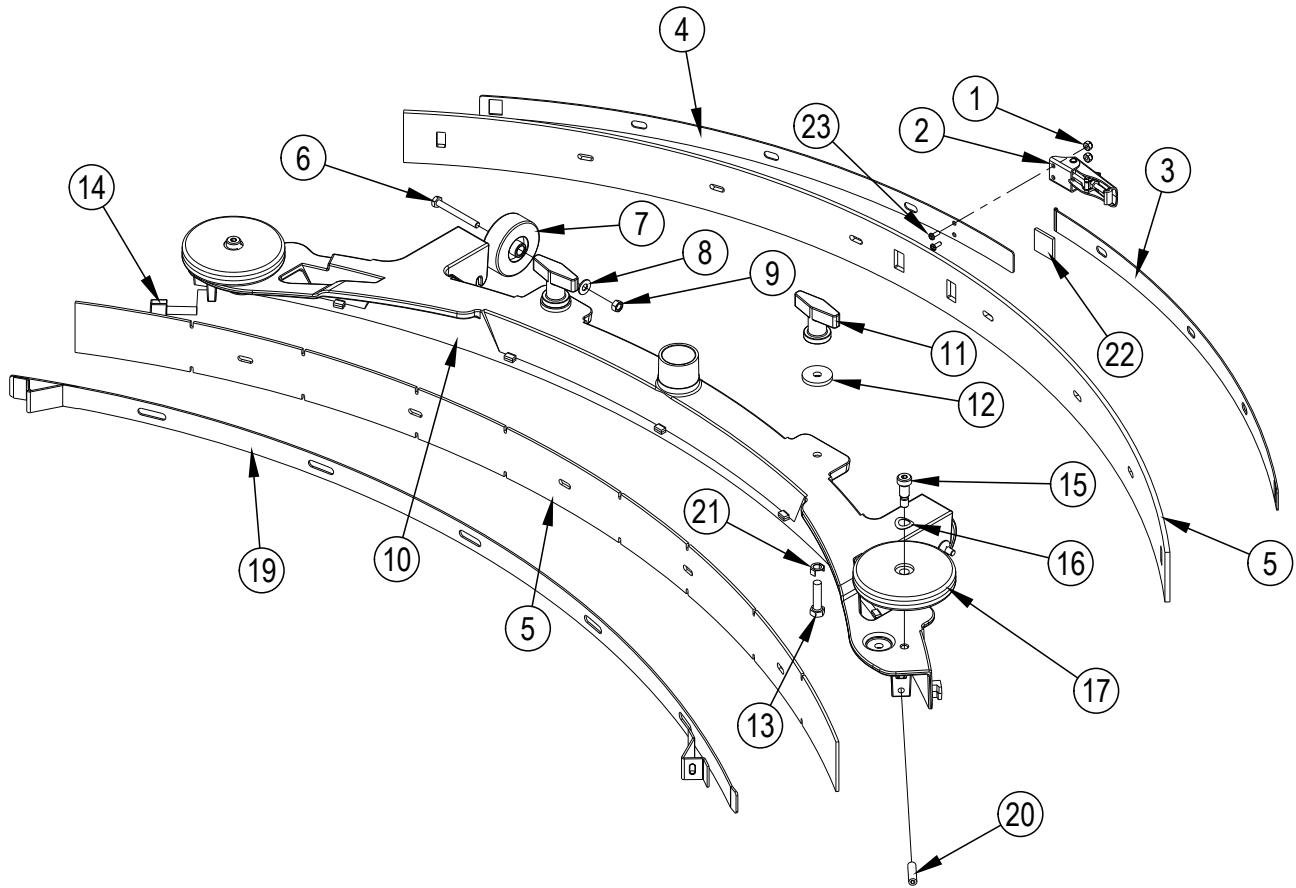
**NOTE 1:** Squeegee Assembly includes Urethane blades.

**NOTE 2:** Squeegee Blade Kit includes both front and rear squeegee blades.

**NOTE 3:** The squeegee frame is not available for sale. If you need to replace the squeegee frame please order the entire squeegee assembly 10399A.

**NOTE 4:** Polyurethane Washer 56384502 is used on machines after S/N 4000065931 and is also part the Squeegee Bracket Kit 56384513. Refer to TSB-FC-2014-031 for machines built prior to S/N 4000065932.

# SQUEEGEE ASSY - DISC 34 AND BOOST 32 MODELS



revised 4/2018

## SQUEEGEE ASSY - DISC 34 AND BOOST 32 MODELS

<b>Item</b>	<b>Ref. No.</b>	<b>Qty</b>	<b>Description</b>
	10748A	1	Squeegee Assembly <b>NOTE 1</b>
1	56002907	2	Nut Hex Nyl Loc SS 6-32
2	9098321000	1	Latch Squeegee
3	9097375000	1	Support, Squeegee
4	9097376000	1	Support, Squeegee
5	56115335	1	Squeegee Kit-Blade-Pu <b>NOTE 2</b>
6	88629A	2	Screw, M6-1 x 55MM Hex
7	9099133000	2	Squeegee Wheel D.60
8	87026A	2	Washer, 1/4 Flat S.S.
9	80199A	2	Nut, M6 x 1.00 Nylock S.S.
10		1	Frame, 42" Squeegee <b>NOTE 3</b>
11	56370711	2	Nut Thumb
12	56384502	2	Washer-Polyurethane-1.25 <b>NOTE 4 TSB-FC-2014-031</b>
13#	56003302	2	Screw, Hex THD to HD SS 5/16-18 x 1.25
14	54647A	1	Knob, M8 x 30
15	88609A	2	Screw, 5/16 x 3/8 x 5/8 SHSS
16	80317A	2	Washer, Bowed .455 ID x 7.40 OD
17	30048A	2	Guide, Wheel
19	60546A	1	Strap, Wldmt., Squeegee
20	88632A	1	Screw, Set M8-1.25 x 30MM
21	60564A	2	Shim, Screw
22	39717A	1	Pad, Squeegee
23	56002909	2	Scr Pan Phil SS 6-32 X .38

# = Revised or new since last update

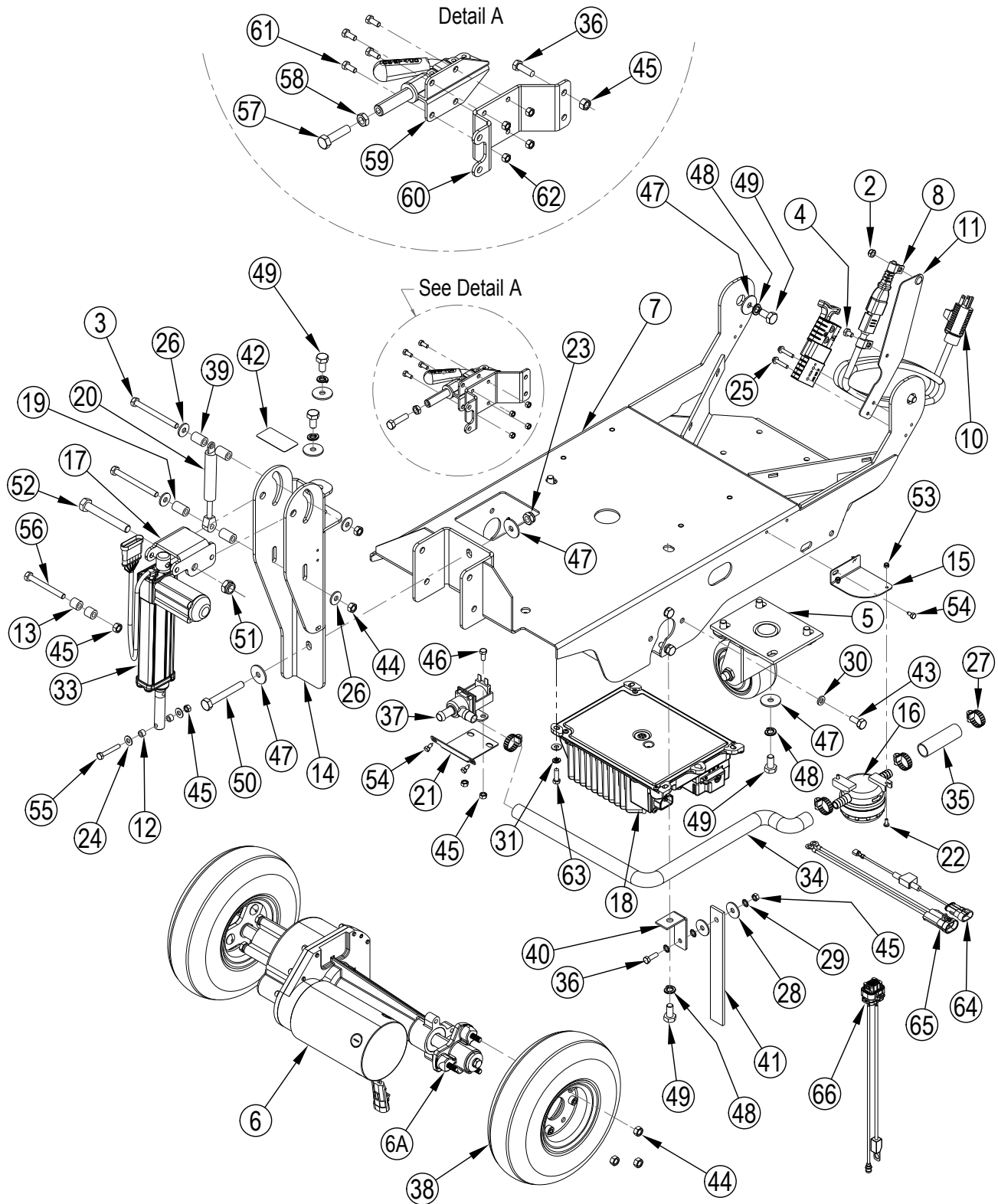
**NOTE 1:** Squeegee Assembly includes Urethane blades.

**NOTE 2:** Squeegee Blade Kit includes both front and rear squeegee blades.

**NOTE 3:** The squeegee frame is not available for sale. If you need to replace the squeegee frame please order the entire squeegee assembly 10748A.

**NOTE 4:** Polyurethane Washer 56384502 is used on machines after S/N4000065931 and is also part the Squeegee Bracket Kit 56384513. Refer to TSB-FC-2014-031 for machines built prior to S/N 4000065932.

# FRAME ASSEMBLY



## FRAME ASSEMBLY

Item	Ref. No.	Qty	Description
[1]	699202	3	Tie-Wire 935A
2	56002840	1	Nut, Hex Nyl Loc-Thin 1/4-20
3	56003390	2	SCR-HEX M8-1.25 X 90mm
4	56009019	1	Scr. Hex Thd Form 1/4-20 X .38
5	56112308	1	Caster-Swivel 4.00 X 2.00
6	56381750	1	Transaxle <b>NOTE 3 / TSBCL2010-25 / TSBCL2009-02</b>
[ ]#	40628A	4	Carbon Brushes, Transaxle
[ ]	56382670	1	Kit Transaxle Motor
6A	56380158	2	Flange Kit
7	56112765	1	Chassis Weldt
8	56323260	2	Clamp, Hose Support
[9]	56381749	1	Adapter Transaxle
10	56383866	1	Cord-AC NEMA IEC320 - DeltaQ <b>NOTE 7</b>
10	56383385	1	Cord Charger Yellow US <b>NOTE 8</b>
11	56383386	1	Power Cord Bracket <b>NOTE 8</b>
12	1462258000	2	Spacer 6.1 X 10 X 6.5
13	9096112000	2	Spacer
14	9097368000	1	Support, Jack Motor
15	9097370000	1	Bracket, Filter
16	9100000362	1	Filter Water <b>TSB-FC-2013-127</b>
17	9097456000	1	Lever
18	56383856	1	Kit-OBC <b>NOTE 6 TSB-FC-2015-007</b>
[ ]	56384043	1	Strain Relief Kit (for 56383856)
19	9096113000	2	Spacer
20	54689A	1	Gas Spring 500N
21	61932A	1	Bracket, Solution Valve
22	80057A	2	Screw, M4-.7x10 Pn Phillips SS
23	80223A	1	Nut, M10-1.5 Nylock
24	87026A	6	Washer, 1/4 Flat S.S.
25	88641A	2	Scr-Hex Thd Form M5 X 25mm
26	170860	4	Washer, Flat 5/16
27	722030	4	Clamp, Hose
28	980205	2	Washer, .31 I.D. X 1.06 O.D.
29	980614	3	Washer, 1/4" Starlock, External
30	980652	7	Washer, 5/16 Lock
31	980657	4	Washer, Lock 1/4
33	9100000680	1	Actuator (for all models except BOOST)
	40280A	1	Actuator (for BOOST 28/32 models only)
34	30828A	1	Hose, Clear X 25.00 Long
35	30829A	1	Hose, Clear X 3.00 Long
36	57994A	5	Screw, M6- 1 X 20
37	59789A	1	Valve, Solution
38	60580A	2	Wheel, 10" Foam Filled <b>NOTE 5 / TSBCL2010-25</b>
39	61937A	2	Spacer, .590OD X .328ID

Item	Ref. No.	Qty	Description
40	61949A	1	Bracket, Ground Strap
41	69639A	1	Strap, Static
42	71017A	1	Label, Moving Parts
43	80183A	7	Bolt, M8-1.25 X 20, Hex
44	80198A	9	Nut, M8 -1.25 Nylock S.S.
45	80199A	4	Nut, M6 -1.00 Nylock S.S.
46	80214A	2	Screw, M6 X 1 X 12
47	87054A	11	Washer Fender .375
48	88612A	10	Washer, Lock M10
49	88614A	10	Screw, M10-1.5 X 20mm
50	88616A	1	Screw, Hex Hd M10 x 75
51	88618A	1	Nut, M12 Nylon Insert
52	88620A	1	Screw, Hex Hd M12 x 90
53	88623A	2	Nut, M4-.7 Nylock Insert
54	88624A	4	Screw, M5 X 12mm Hex Self Tap Tri-Lobe
55	88626A	1	Screw, Hex Hd M6-1 X 40mm Hex
56	88635A	1	Screw, M8 X75 Hex Head
57	962157	1	Screw, 5/16-18 x 1.25 Hex Hd <b>NOTE 4</b>
58	920160	1	Nut, 5/16 Jam Hex <b>NOTE 4</b>
59	54772A	1	Clamp, Toggle Straight Line <b>NOTE 4</b>
60	61934A	1	Bracket, Brake <b>NOTE 4</b>
61	80249A	4	Screw, M5-.8 x 12MM Hex <b>NOTE 4</b>
62	80196A	4	Nut, M5-.8 Nylock SS <b>NOTE 4</b>
63	56003431	4	Scr Hex SS M6-1.00X16MM
64	56383863	1	Adapter-Interlock Pin 2 <b>NOTE 7</b>
65	56383586	1	Adapter-Charger DeltaQ Power <b>NOTE 7</b>
66	56383857	1	Indicator-Charge Led W/Temp <b>NOTE 7</b>
[ ]	41062A	1	Harness Chrg Jumper <b>NOTE 2</b>
[ ]	40512B	1	Charger Battery 25 Amp <b>NOTE 2</b>
[ ]	40297A	1	Cable Charger Adapter1 <b>NOTE 2</b>

[ ] = Not Shown

# = Revised or new since last update

**NOTE 1:** Only used on models with on-board charger.

**NOTE 2:** Only used on models without on-board charger.

**NOTE 3:** Transaxle 56380160 is obsolete and replaced by Transaxle Kit 56381750

**NOTE 4:** Optional Brake Kit 56112221 is obsolete and no longer available.

**NOTE 5:** For machines built before SN3000035867 (which used wheel 54697A) order Wheel Assembly Kit 56380159. This kit includes one new wheel 60580A and a Flange Kit.

**NOTE 6:** The onboard battery charger 56382504 has been replaced in production by 56383856. If you need to replace 56382504 please order Onboard Charger Kit 56383870.

**NOTE 7:** Only used with Delta-Q onboard battery charger.

**NOTE 8:** Only used with SPE onboard battery charger.



revised 6/2016

## BRUSH HEAD ASSY - DISC 26

<u>Item</u>	<u>Ref. No.</u>	<u>Qty</u>	<u>Description</u>
1	722030	1	Clamp, Hose
2	782002	2	Clamp, Manifold
3	920248	2	Nut, 3/8-16. Esna, Jam
4	962244	8	Screw, 3/8-16 X .75 Hex
5	962714	2	Screw, Gimble Mount
6	980638	9	Washer, 3/8 Lock
7	980645	2	Washer, 3/8" S.A.E. Flat
8	980648	1	Washer 17/32 X 1 1/16 Plain
9	56109717	1	Tube Jack Motor
10	30412A	1	Hose, Solution
11	30661A	1	Brush Housing L.H.
12	30662A	1	Brush Housing R.H.
13	34705A	2	Hose, Solution 6.00" Lg.
14	38014A	1	Splitter, Solution
[15]	40645A	4	Connector, Housing
16	44809B	2	Motor, Brush
17	50248A	2	Clamp, Hose
18	53571A	1	Clamp, Hose
19	57994A	2	Screw, M6- 1 X 20
20	59856A	2	Washer, Rubber
21	59950A	1	Wheel, Guide 3 1/2"
22	61925A	1	Plate, 26" Brush Wldmt
23	61926A	1	Bracket, Head Lift
24	71017A	2	Label, Moving Parts
25	80183A	3	Bolt, M8-1.25 X 20, Hex
26	80198A	3	Nut, M8 -1.25 Nylock S.S.
27	80199A	4	Nut, M6 -1.00 Nylock S.S.
28	85610A	1	Screw, 3/8-16 X 2.5" P.H.
30	88617A	8	Screw, M10xm12x16mm S.B.S.H.
31	88618A	1	Nut, M12 Nylon Insert
32	88619A	1	Screw, M12-1.75 X 160mm Hex
33	88623A	4	Nut, M4-.7 Nylock Insert
34	88627A	2	Screw, M6-1 X 40mm Ph
35	56115427	1	Draw Latch
36	55451A	1	Keeper, Latch
37	80223A	8	Nut, M10-1.5 Nylock
38	E04016	2	Spring
39	69186A	1	Tab, Latch, Brush
40	56112548	8	Bushing
41	56382665	2	Gimbal-Collar Assembly
42	56382618	4	Lever Kit <b>NOTE 1</b>
43	964002	4	Screw, M4-.7x16mm Ph
44	38035A	2	Driver Pad 13 Gimbal

[ ] = Not Shown

**NOTE 1:** Lever Kit 56382618 contains one lever and two bushings (item 40).





revised 6/2016

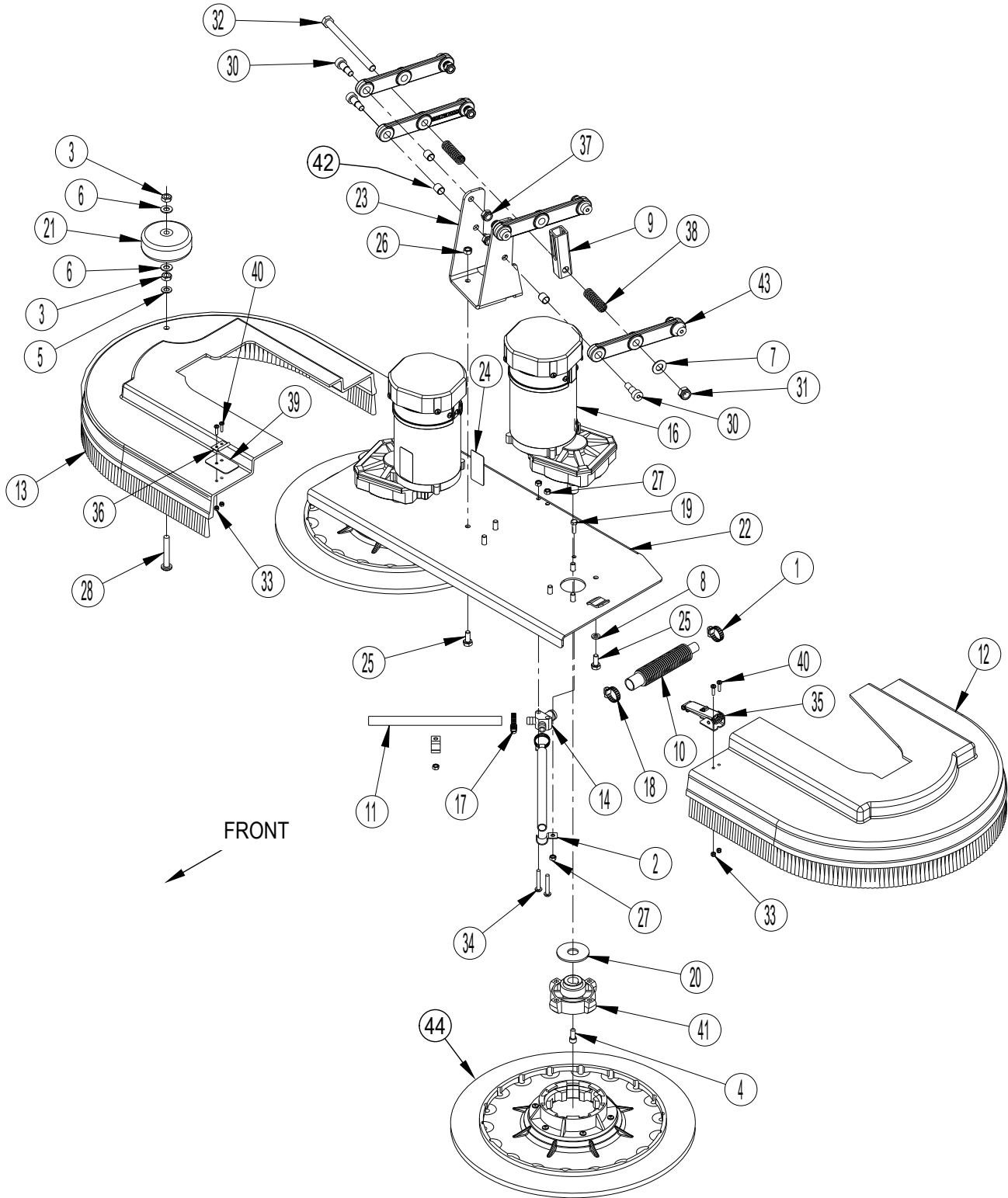
## BRUSH HEAD ASSY - DISC 28

<u>Item</u>	<u>Ref. No.</u>	<u>Qty</u>	<u>Description</u>
1	722030	1	Clamp, Hose
2	782002	2	Clamp, Manifold
3	920248	2	Nut, 3/8-16. Esna, Jam
4	962244	8	Screw, 3/8-16 X .75 Hex
5	962714	2	Screw, Gimble Mount
6	980638	9	Washer, 3/8 Lock
7	980645	2	Washer, 3/8" S.A.E. Flat
8	980648	1	Washer 17/32 X 1 1/16 Plain
9	56109717	1	Tube Jack Motor
10	30412A	1	Hose, Solution
11	30574A	1	Brush Housing L.H.
12	30575A	1	Brush Housing R.H.
13	34705A	2	Hose, Solution 6.00" Lg.
14	38014A	1	Splitter, Solution
[15]	40645A	4	Connector, Housing
16	44809B	2	Motor, Brush
17	50248A	2	Clamp, Hose
18	53571A	1	Clamp, Hose
19	57994A	2	Screw, M6- 1 X 20
20	59856A	2	Washer, Rubber
21	59950A	1	Wheel, Guide 3 1/2"
22	61924A	1	Plate, 28" Brush Wldmt
23	61926A	1	Bracket, Head Lift
24	71017A	2	Label, Moving Parts
25	80183A	3	Bolt, M8-1.25 X 20, Hex
26	80198A	3	Nut, M8 -1.25 Nylock S.S.
27	80199A	4	Nut, M6 -1.00 Nylock S.S.
28	85610A	1	Screw, 3/8-16 X 2.5" P.H.
30	88617A	8	Screw, M10xm12x16mm S.B.S.H.
31	88618A	1	Nut, M12 Nylon Insert
32	88619A	1	Screw, M12-1.75 X 160mm Hex
33	88623A	4	Nut, M4-.7 Nylock Insert
34	88627A	2	Screw, M6-1 X 40mm Ph
35	56115427	1	Draw Latch
36	55451A	1	Keeper, Latch
37	80223A	8	Nut, M10-1.5 Nylock
38	E04016	2	Spring
39	69186A	1	Tab, Latch, Brush
40	964002	4	Screw, M4-.7x16mm Ph
41	56382665	2	Gimbal-Collar Assembly
42	56112548	8	Bushing
43	56382618	4	Lever Kit <b>NOTE 1</b>
44	38036A	2	Driver, Pad 14" Gimbal

[ ] = Not Shown

**NOTE 1:** Lever Kit 56382618 contains one lever and two bushings (item 42).

# BRUSH HEAD ASSY - DISC 34



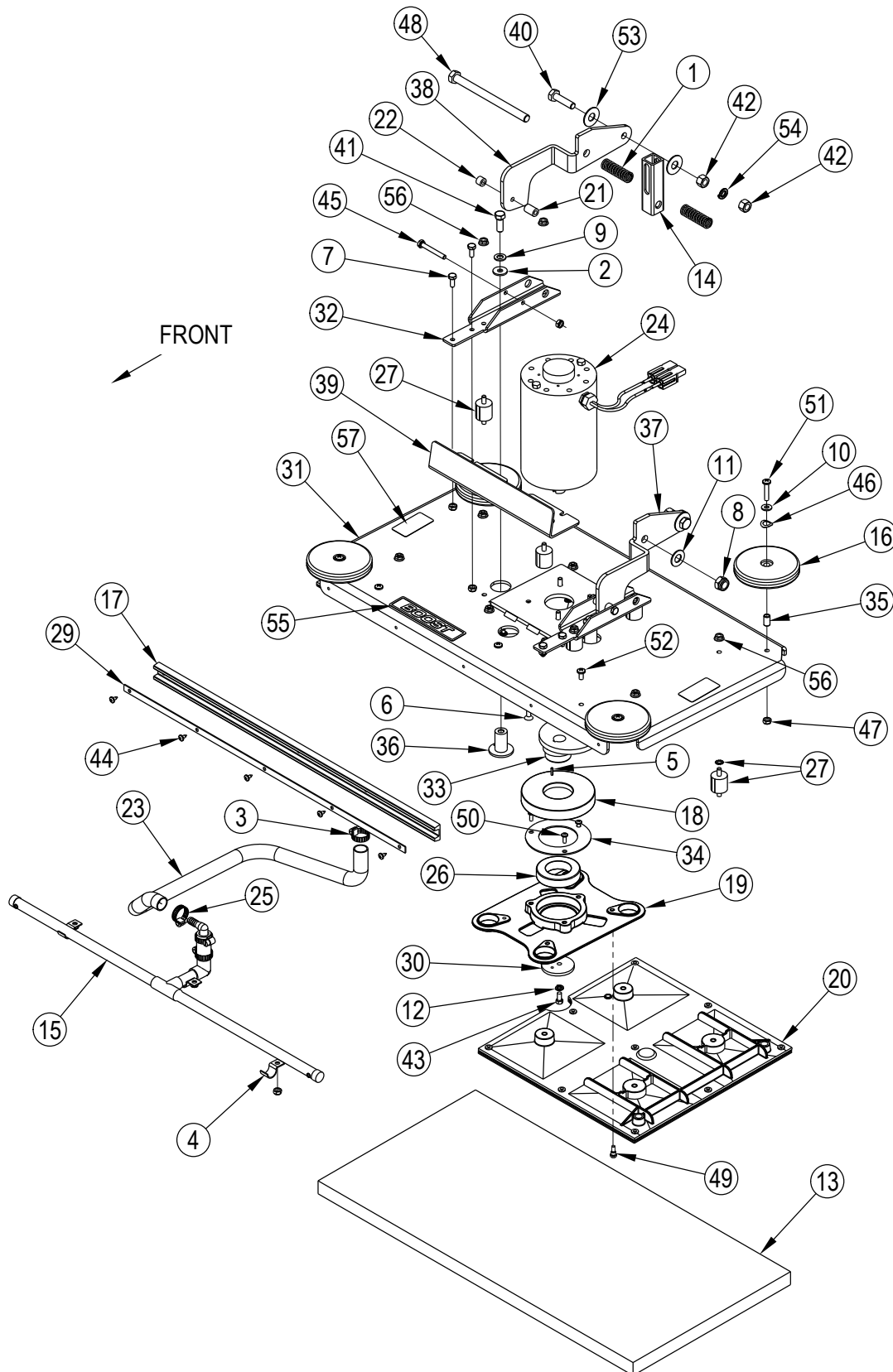
**BRUSH HEAD ASSY - DISC 34**

<b>Item</b>	<b>Ref. No.</b>	<b>Qty</b>	<b>Description</b>
1	722030	1	Clamp, Hose
2	782002	2	Clamp, Manifold
3	920248	2	Nut, 3/8-16. Esna, Jam
4	962714	2	Screw, Gimble Mount
5	980638	1	Washer, 3/8 Lock
6	980645	2	Washer, 3/8" S.A.E. Flat
7	980648	1	Washer 17/32 X 1 1/16 Plain
8	980652	8	Washer, 5/16 Lock
9	56109717	1	Tube Jack Motor
10	30412A	1	Hose, Solution
11	30453A	2	Hose, Clear Vinyl
12	30583A	1	Brush Hsg Lh
13	30584A	1	Brush Housing Rh
14	38014A	1	Splitter, Solution
[15]	40645A	4	Connector, Housing
16	41046A	2	Motor, Brush (Imperial) <b>NOTE 2</b>
17	50248A	2	Clamp, Hose
18	53571A	1	Clamp, Hose
19	57994A	2	Screw, M6- 1 X 20
20	59856A	2	Washer, Rubber
21	59950A	1	Wheel, Guide 3 1/2"
22	61923A	1	Plate, 34" Brush Wldmt
23	61926A	1	Bracket, Head Lift
24	71017A	2	Label, Moving Parts
25	80183A	11	Bolt, M8-1.25 X 20, Hex
26	80198A	3	Nut, M8 -1.25 Nylock S.S.
27	80199A	4	Nut, M6 -1.00 Nylock S.S.
28	85610A	1	Screw, 3/8-16 X 2.5" P.H.
30	88617A	8	Screw, M10xm12x16mm S.B.S.H.
31	88618A	1	Nut, M12 Nylon Insert
32	88619A	1	Screw, M12-1.75 X 160mm Hex
33	88623A	4	Nut, M4-.7 Nylock Insert
34	88627A	2	Screw, M6-1 X 40mm Ph
35	56115427	1	Draw Latch
36	55451A	1	Keeper, Latch
37	80223A	8	Nut, M10-1.5 Nylock
38	E04016	2	Spring
39	69186A	1	Tab, Latch, Brush
40	964002	4	Screw, M4-.7x16mm Ph
41	56382665	2	Gimbal-Collar Assembly
42	56112548	8	Bushing
43	56382618	4	Lever Kit <b>NOTE 1</b>
44	38034A	2	Driver, Pad 17 Gimbal

[ ] = Not Shown

**NOTE 1:** Lever Kit 56382618 contains one lever and two bushings (item 42).**NOTE 2:** Motor Brush Kit 56385092 contains four Carbon Brushes and four Springs for 41046A.

# BRUSH HEAD ASSY - BOOST 28



revised 10/2015

## BRUSH HEAD ASSY - BOOST 28

Item	Ref. No.	Qty	Description
1	E04016	2	Spring
2	170860	2	Washer. Flat 5/16
3	722030	1	Clamp. Hose
4	782002	3	Clamp. Manifold
5	925589	1	Pin. Roll
6	56001881	4	Scr. Flt Soc 1/4-20 <b>NOTE 1 / TSBCL2010-12</b>
7	962139	4	Screw. 1/4-20x.625 Hex Cap
8	88618A	1	Nut. M12 Nylon Insert
9	980638	2	Washer. 3/8 Lock
10	980646	4	Washer. 1/4" Flat
11	980648	1	Washer 17/32 X 1 1/16 Plain
12	980657	1	Washer. Lock 1/4
13	997001	1	Pad. Red. 28"
14	56109717	1	Tube Jack Motor
15	10309A	1	Tube Drip 28"
16	30048A	4	Guide. Wheel
17	30206A	1	Bumper
18		1	Shield Boost Bearing <b>NOTE 1 / NOTE 2 / TSBCL2010-12</b>
19	56381491	1	Plate. Driver
20	56383375	2	Flex Plate Assy-28 <b>NOTE 1</b>
21	30670A	2	Spacer. Nylon
22	30671A	2	Spacer. Nylon
23	30680A	1	Hose. Solution (Flex)
24	56390072	1	Motor. 24vdc <b>NOTE 3</b>
[ ]	56412287	1	Carbon Brush Motor Replacement Kit (for 56390072 & 56380247)
25	50248A	1	Clamp. Hose
26	50736A	1	Bearing
27	56382991	1	Kit-Isolator Boost HD <b>NOTE 1 / TSBCL2010-12</b>
29	61425A	1	Retainer. Bumper
30	61724A	1	Retainer. Eccentric
31	56381724	1	Plate-Upper 28
32	61733B	2	Bracket. Lift
33		1	Eccentric <b>NOTE 2</b>
34	61775A	1	Retainer. Bearing
35	61782A	4	Sleeve. Guide Wheel
36	56381532	2	Stud Stabilizer Short
37	61935A	1	Arm. Lift. Right
38	61936A	1	Arm. Lift. Left
39	61938A	1	Guard. Front
40	80054A	2	Screw. M10-1.5 X40mm
41	80103A	2	Bolt. 3/8-24 X 1.0 Hex
42	80162A	4	Nut. M10 Hex
43	56002155	1	Scr-Hex 1/4-20 x .75
44	80296A	5	Screw #10-24 X 7/16 Type 23
45	80298A	2	Screw. 1/4-20 X 2.00 Hex Cap
46	80317A	4	Washer Bowed .455 Id X .740 O.D.
47	81217A	13	Nut. 1/4-20 Hex Esna
48	88619A	1	Scr. M12-1.75 X 160mm Hex
49	56381989	4	Shoulder Bolt - BQOST
50	84237A	3	Screw. 10-32 X .50 P.H.
51	85301A	4	Screw. 1/4-20 X 1 1/4 C.R.P.H.
52	85395A	3	Screw. 1/4-20 X 1/2" P.H.
53	87607A	4	Washer. Nylon 1.25 X .52 X .06 Flat
54	88612A	2	Washer. Lock M10
55	56381702	1	Decal-Boost Embossed
56	81220A	12	Nut-Serrated Flange
57	71017A	2	Label. Moving Parts

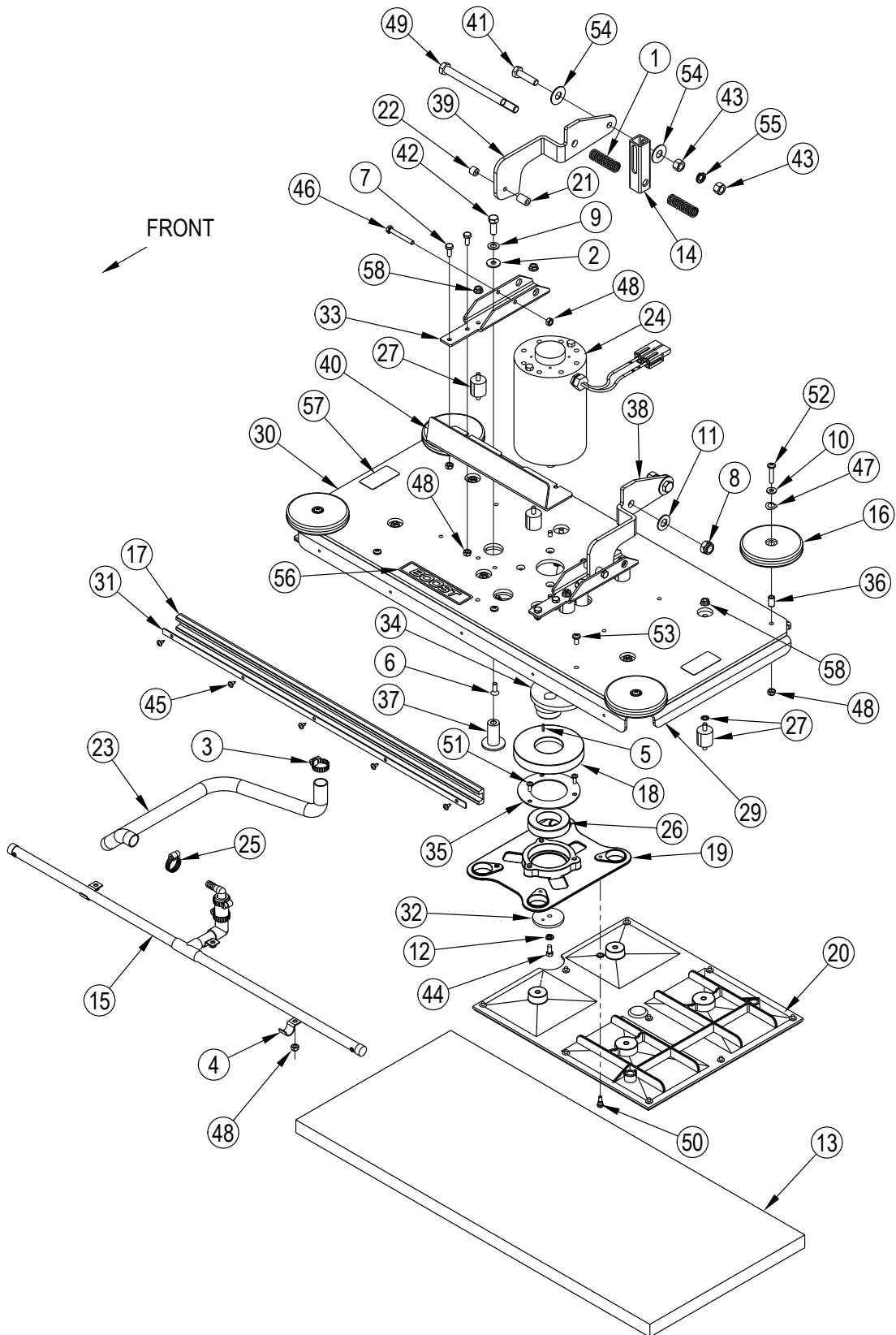
\* = Optional, Not Included

**NOTE 1:** Customers ordering parts for machines built before April 2010 need to order 28" Flex Plate Kit 56383369 to replace any or all of these Items for repair.

**NOTE 2:** Order Eccentric & Shield Kit 56380246 to replace these components.

**NOTE 3:** Motor 56390072 replaced Motor 56380247 in production effective February 2012.

# BRUSH HEAD ASSY - BOOST 32



revised 10/2015

## BRUSH HEAD ASSY - BOOST 32

<b>Item</b>	<b>Ref. No.</b>	<b>Qty</b>	<b>Description</b>
1	E04016	2	Spring
2	170860	2	Washer, Flat 5/16
3	722030	1	Clamp, Hose
4	782002	3	Clamp, Manifold
5	925589	1	Pin, Roll
6	56001881	4	Scr. Flt Soc 1/4-20 X.75 <b>NOTE 1 / TSBCL2010-12</b>
7	962139	4	Screw, 1/4-20x.625 Hex Cap
8	88618A	1	Nut, M12 Nylon Insert
9	980638	2	Washer, 3/8 Lock
10	980646	4	Washer, 1/4" Flat
11	980648	1	Washer 17/32 X 1 1/16 Plain
12	980657	1	Washer, Lock 1/4
13	997004	1	Pad, Red, 32"
14	56109717	1	Tube Jack Motor
15	10343A	1	Tube Drip 32"
16	30048A	4	Guide, Wheel
17	30306A	1	Bumper Front
18		1	Shield Boost Bearing <b>NOTE 1 / NOTE 2 / TSBCL2010-12</b>
19	56381491	1	Plate Driver
20	56383376	2	Flex Plate Assy-32 <b>NOTE 1</b>
21	30670A	2	Spacer, Nylon
22	30671A	2	Spacer, Nylon
23	30680A	1	Hose, Solution (Flex)
24	56390072	1	Motor, 24vdc <b>NOTE 3</b>
[ ]	56412287	1	Brush Motor Replacement Kit (for 56390072 & 56380247)
25	50248A	1	Clamp, Hose
26	50736A	1	Bearing
27	56382991	1	Kit-Isolator Boost HD <b>NOTE 1 / TSBCL2010-12</b>
29	56381719	1	Plate-Upper Boost 32
30	56381720	1	Weight-Upper Boost 32
31	61327A	1	Retainer, Bumper
32	61724A	1	Retainer, Eccentric
33	61733B	2	Bracket, Lift
34		1	Eccentric <b>NOTE 2</b>
35	61775A	1	Retainer, Bearing
36	61782A	4	Sleeve, Guide Wheel
37	56381531	2	Stud Stabilizer
38	61935A	1	Arm, Lift, Right
39	61936A	1	Arm, Lift, Left
40	61938A	1	Guard, Front
41	80054A	2	Screw, M10-1.5 X40mm
42	80103A	2	Bolt, 3/8-24 X 1.0 Hex
43	80162A	4	Nut, M10 Hex
44	56002155	1	Scr-Hex 1/4-20 x .75
45	80296A	5	Screw #10-24 X 7/16 Type 23
46	80298A	2	Screw, 1/4-20 X 2.00 Hex Cap
47	80317A	4	Washer Bowed .455 Id X .740 O.D.
48	81217A	13	Nut, 1/4-20 Hex Esna
49	88619A	1	Scr, M12-1.75 X 160mm Hex
50	56381989	4	Shoulder Bolt - BOOST
51	84237A	3	Screw, 10-32 X .50 P.H.
52	85301A	4	Screw, 1/4-20 X 1 1/4 C.R.P.H.
53	85395A	3	Screw, 1/4-20 X 1/2" P.H.
54	87607A	4	Washer, Nylon 1.25 X .52 X .06 Flat
55	88612A	2	Washer, Lock M10
56	56381702	1	Decal-Boost Embossed
57	71017A	2	Label, Moving Parts
58	81220A	12	Nut-Serrated Flange

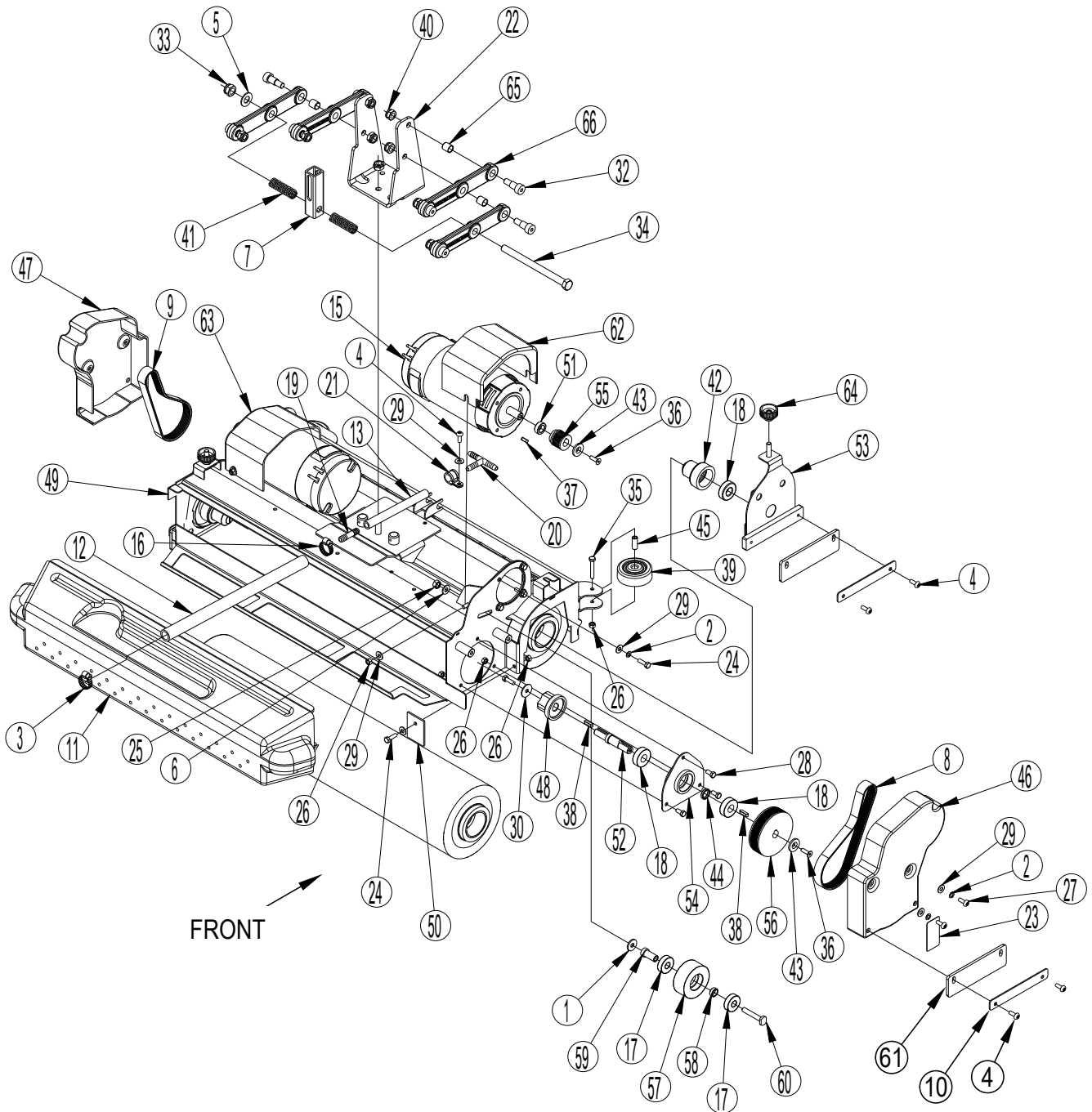
\* = Optional, Not Included

**NOTE 1:** Customers ordering parts for machines built before April 2010 need to order 32" Flex Plate Kit 56383370 to replace any or all of these items for repair.

**NOTE 2:** Order Eccentric & Shield Kit 56380246 to replace these components.

**NOTE 3:** Motor 56390072 replaced Motor 56380247 in production effective February 2012.

# CYLINDRICAL 28 BRUSH HEAD ASSY





### CYLINDRICAL 28 BRUSH HEAD ASSY

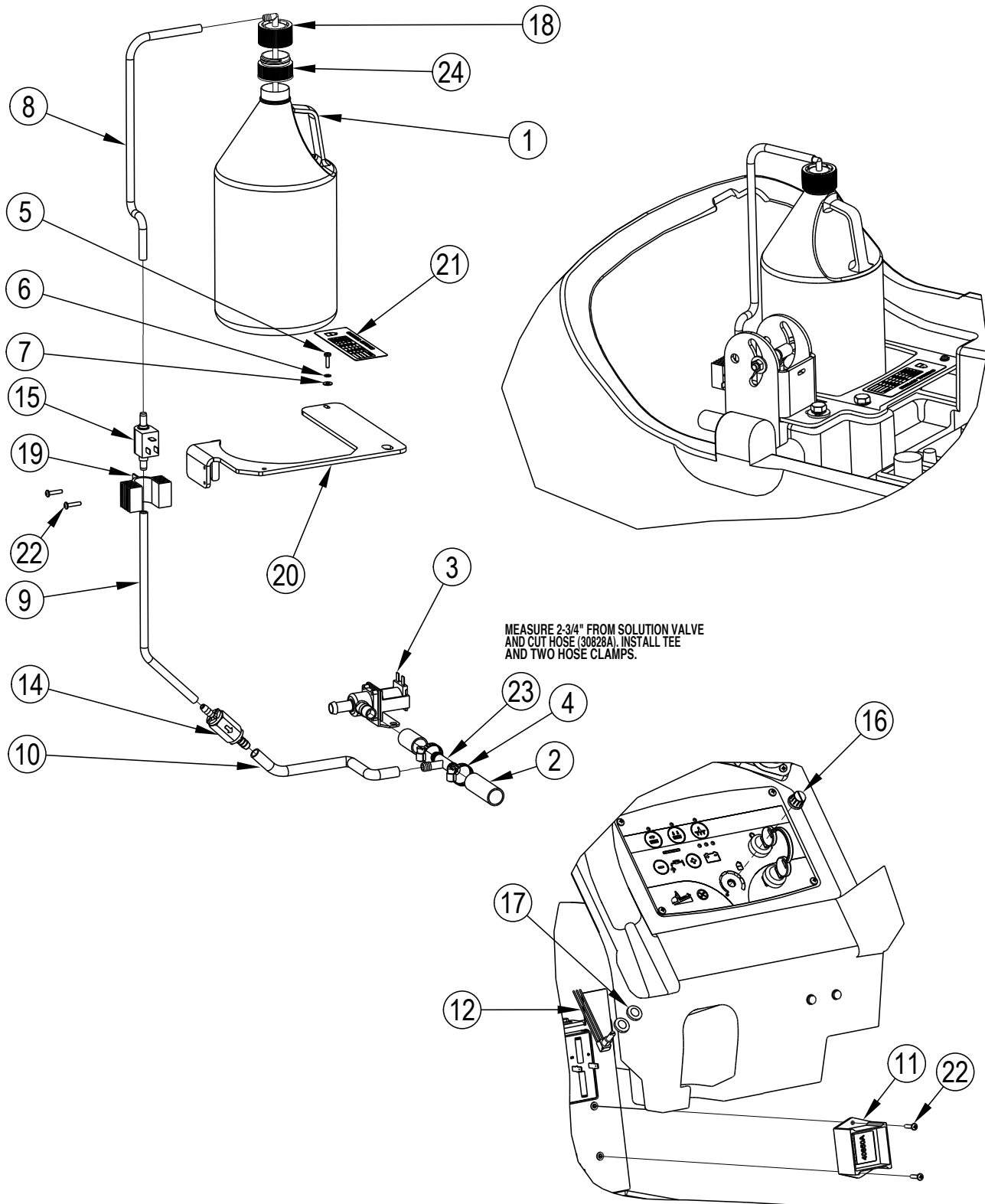
Item	Ref. No.	Qty	Description
1	170860	2	Washer, Flat 5/16
2	170892	12	Washer Lock 1/4
3	722030	1	Clamp, Hose
4	964007	9	Screw, M6 X 1.00 X 16mm Pan Head
5	980648	1	Washer 17/32 X 1 1/16 Plain
6	980651	2	Washer, 5/16 Flat
7	56109717	1	Tube Jack Motor
8	9095760000	1	Belt Poly-V
9	9095761000	1	Belt Poly-V
10	9095769000	4	Plate, Splash Guard Fix
11	9096225000	1	Container Dirt
12	30680A	1	Hose, Solution (Flex)
13	30835A	1	Hose, Clear
[14]	40645A	4	Connector, Housing
15	41086A	2	Motor Electric 600w 24v
16	50248A	1	Clamp, Hose
17	51126A	4	Bearing, 6201
18	56106070	6	Bearing Ball
19	52414A	1	Union, 3/8 Straight Hosebarb
20	53181A	1	Hosebarb 3/8 T
21	54779A	1	Clamp P 5/8 Steel
22	61926A	1	Bracket, Head Lift
23	71017A	2	Label, Moving Parts
24	80195A	12	Screw, M6 X 1.00 X 20mm Hex S.S.
25	80198A	2	Nut, M8 -1.25 Nylock S.S.
26	80199A	15	Nut, M6 -1.00 Nylock S.S.
27	80208A	4	Screw, M6 X 1.00 X 10mm Pan Head
28	80214A	6	Screw, M6 X 1 X 12
29	87026A	19	Washer, 1/4 Flat S.S.
30	87039A	2	Washer Fender 1/4"
32	88617A	8	Screw, M10xm12x16mm S.B.S.H.
33	88618A	1	Nut, M12 Nylon Insert

Item	Ref. No.	Qty	Description
34	88619A	1	Screw, M12-1.75 X 160mm Hex
35	88626A	2	Screw M6-1 X 40mm Hex
36	88642A	4	Screw M6-1.0 X 20mm Flat Hd Socket
37	88645A	2	Key Square M5 X 15mm
38	88646A	4	Key Square M5 X20mm
39	L08602460	2	Roller Bumper
40	80223A	9	Nut, M10-1.5 Nylock
41	E04016	2	Spring
42	56115273	2	Hub-Idler
<b>DELETED</b>			
43	1455828000	4	Spacer
44	1461232000	2	Spacer
45	9095710000	2	Spacer
46	9095724000	1	Cover Crankcase Belt Right
47	9095725000	1	Cover Crankcase Belt Left
48	9095728000	2	Hub Brush
49	9095751000	1	Frame Cyl Deck
50	9095752000	2	Splash Guard
51	9095754000	2	Spacer
52	9095755000	2	Pin Brush Pulley
53	9095756000	2	Support Brush
54	9095757000	2	Support Brush Pulley
55	9095758000	2	Pulley
56	9095759000	2	Pulley Poly-V
57	9095762000	2	Roller Belt Tensioner
58	9095764000	2	Spacer
59	9095765000	2	Bushing Collared
60	9095766000	2	Pin
61	9095770000	4	Guard Splash
62	9095802000	1	Crankcase Motor Protection Right
63	9095803000	1	Crankcase Motor Protection Left
64	9095964000	2	Knob M8
65	56112548	8	Bushing
66	56382618	4	Lever Kit <b>NOTE 1</b>

[ ] = Not Shown

**NOTE 1:** Lever Kit 56382618 contains one lever and two bushings (item 65).

# CHEMICAL MIXING KIT



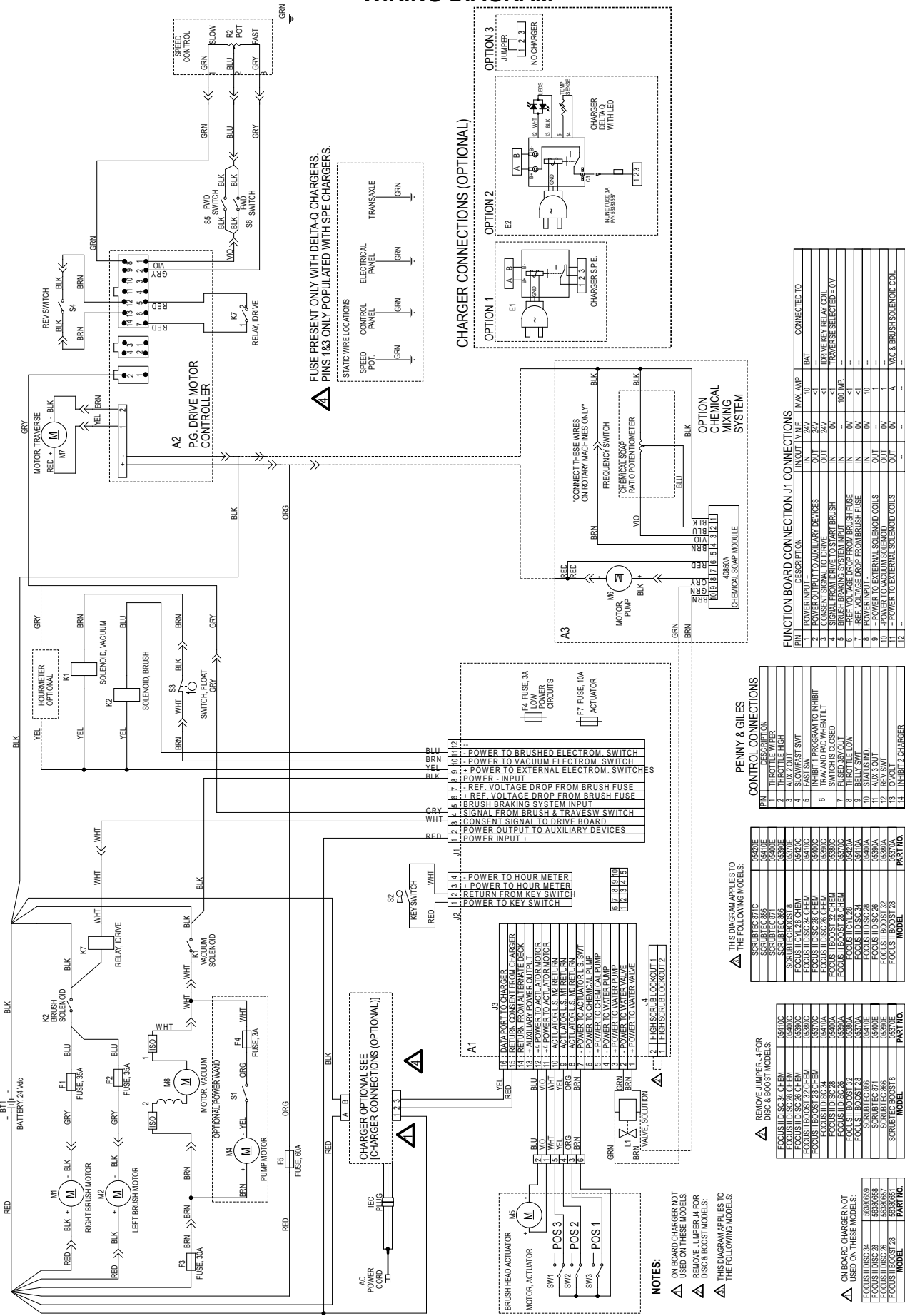
revised 8/2012

## CHEMICAL MIXING KIT

<u>Item</u>	<u>Ref. No.</u>	<u>Qty</u>	<u>Description</u>
1	Ref.	1	Cleaning Solution Bottle
2	Ref.	1	From Frame Asm.
3	Ref.	1	Valve From Frame Asm.
4	722030	2	Clamp, Hose
5	964002	1	Screw, M4-.7 x 16MM PH
6	980621	1	Washer, External Tooth Lock
7	980982	1	Washer, #10 SAE Flat
8	39725A	1	Hose, 1/4" ID x 15.25 Clear
9	39726A	1	Hose, 1/4" ID x 11.50 Clear
10	39727A	1	Hose, 3/8 x 11.5 Clear
11	40850A	1	Module, Chemical
12	41084A	1	Harness, Chemical
13	53186A	10	Tie, Wire (not illustrated)
14	53719A	1	Valve, Check
15	53721A	1	Pump, Chemical
16	53736A	1	Knob, Adjustment
17	87618A	2	Washer, Flat
18	54778A	1	Adapter, Cap 38MM
19	61772A	1	Bracket, Pump
20	61954B	1	Support, Bottle
21	71489A	1	Label, Chemical Settings
22	962027	4	Screw, 8-32 x 1/2 P.H.
23	88644A	1	Tee, Reducing 3/8 to 1/2
24	9097023000	1	Adaptor (For Sutter box)

# WIRING DIAGRAM

revised 9/2014



**WIRING DIAGRAM**

<b>Item</b>	<b>Ref. No.</b>	<b>Qty</b>	<b>Description</b>
A1	56382501	1	Control Board
A2	41068B	1	Drive Motor Controller
A3	40850A	1	Chemical Module
BT1	NA	1	Battery
E1	NA	1	Battery Charger S.P.E. <b>(Optional)</b>
E2	NA	1	Battery Charger DeltaQ with LED <b>(Optional)</b>
F1	41431B	1	Circuit Breaker 35A <b>(Disc &amp; BOOST)</b>
	41422B	1	Circuit Breaker 25A <b>(Cylindrical)</b>
F2	41431B	1	Circuit Breaker 35A <b>(Disc &amp; BOOST)</b>
	41422B	1	Circuit Breaker 25A <b>(Cylindrical)</b>
F3	41073A	1	Fuse 30A, Vacuum
F4	NA	1	Fuse 3A
F5	41074A	1	Fuse 60A
K1	41075A	1	Vacuum Solenoid <b>(Relay)</b>
K2	56412179	1	Brush Solenoid <b>(Contactor)</b>
K7	41069B	1	I-Drive Relay
L1	59789A	1	Solution Valve
M1	44809B	1	Motor, Right Brush <b>(26/28 Disc)</b>
	41046A	1	Motor, Right Brush <b>(34 Disc) NOTE 1</b>
	41086A	1	Motor, Right Brush <b>(28 Cylindrical)</b>
	56390072	1	Motor <b>(BOOST)</b>
M2	44809B	1	Motor, Left Brush <b>(26/28 Disc)</b>
	41046A	1	Motor, Left Brush <b>(34 Disc) NOTE 1</b>
	41086A	1	Motor, Left Brush <b>(28 Cylindrical)</b>
M4	NA	1	Motor, Pump <b>(Optional)</b>
M5	9100000680	1	Motor, Brush Lift Actuator <b>(for all models except BOOST)</b>
	40280A	1	Motor, Brush Lift Actuator <b>(BOOST models only)</b>
M6	53721A	1	Pump, Chemical <b>(Optional)</b>
M7	56381750	1	Motor, Traverse
M8	9097466000	1	Motor, Vacuum
R2	41078A	1	Potentiometer
S1	NA	1	Power Wand Switch <b>(Optional)</b>
S2	1462888000	1	Key Switch <b>(not used on model 56383986)</b>
S3	40002A	1	Float Switch
S4	52556A	1	Switch, Reverse
S5	11131A	1	Switch, Forward
S6	11131A	1	Switch, Forward

**NOTE 1:** Motor Brush Kit 56385092 contains four Carbon Brushes and four Springs for 41046A.



revised 11/2016

## WIRING DIAGRAM-NYCTA MODEL 56383986 ONLY

<u>Item</u>	<u>Ref. No.</u>	<u>Qty</u>	<u>Description</u>
A1	56382501	1	Control Board
A2	56383989	1	Cont-I-Drive 24V Travrs NYCTA ( <b>only model 56383986</b> )
BT1	NA	1	Battery
E1	NA	1	Battery Charger S.P.E. ( <b>Optional</b> )
E2	NA	1	Battery Charger DeltaQ with LED ( <b>Optional</b> )
F1	41431B	1	Circuit Breaker 35A ( <b>Disc &amp; BOOST</b> )
	41422B	1	Circuit Breaker 25A ( <b>Cylindrical</b> )
F2	41431B	1	Circuit Breaker 35A ( <b>Disc &amp; BOOST</b> )
	41422B	1	Circuit Breaker 25A ( <b>Cylindrical</b> )
F3	41073A	1	Fuse 30A, Vacuum
F4	NA	1	Fuse 3A
F5	41074A	1	Fuse 60A
K1	41075A	1	Vacuum Solenoid ( <b>Relay</b> )
K2	56412179	1	Brush Solenoid ( <b>Contact</b> )
K7	41069B	1	I-Drive Relay
L1	59789A	1	Solution Valve
M1	44809B	1	Motor, Right Brush ( <b>26/28 Disc</b> )
	41046A	1	Motor, Right Brush ( <b>34 Disc</b> )
	41086A	1	Motor, Right Brush ( <b>28 Cylindrical</b> )
	56390072	1	Motor ( <b>BOOST</b> )
M2	44809B	1	Motor, Left Brush ( <b>26/28 Disc</b> )
	41046A	1	Motor, Left Brush ( <b>34 Disc</b> )
	41086A	1	Motor, Left Brush ( <b>28 Cylindrical</b> )
M4	NA	1	Motor, Pump ( <b>Optional</b> )
M5	9100000680	1	Motor, Brush Lift Actuator ( <b>for all models except BOOST</b> )
	40280A	1	Motor, Brush Lift Actuator ( <b>BOOST models only</b> )
M7	56381750	1	Motor, Traverse
M8	9097466000	1	Motor, Vacuum
R2	41078A	1	Potentiometer
S1	NA	1	Power Wand Switch ( <b>Optional</b> )
S3	40002A	1	Float Switch
S4	52556A	1	Switch, Reverse
S5	11131A	1	Switch, Forward
S6	11131A	1	Switch, Forward





**ACCESSORIES**

<b>Item</b>	<b>Ref. No.</b>	<b>Qty</b>	<b>Description</b>
*	11363A	1	Chemical System Kit
*	11371A	1	Hour Meter Kit
*	14607A	1	Care Kit
*	53391A	1	Battery Maintenance System (CBMS)
*	56384137	1	Idler W/O-Ring Kit
*	56112221	1	Kit-Parking Brake
*	10398A	1	32.5" Squeegee Asm.
*	10399A	1	35" Squeegee Asm.
*	10748A	1	41" Squeegee Asm.
*	56385092	1	Motor Brush Kit for 41046A motors

**Boost 28**

<b>Item</b>	<b>Ref. No.</b>	<b>Qty</b>	<b>Description</b>
<b>Pads &amp; Brushes</b>			
*	997002	1	White Pad (14x28) 5 pack
*	997001	1	Red Pad (14x28) 5 pack
*	997006	1	Blue Pad (14x28) 5 pack
*	997000	1	Black Pad (14x28) 5 pack
*	56383924	1	Pad-Brush-Green-14X28-4/CS
*	30794A	1	Two Sided Velcro
<b>35" Squeegee Blades (front &amp; rear)</b>			
*	56112332	1	Blade Kit-Squeegee PU
*	56112331	1	Blade Kit-Squeegee Linatex
*	56112330	1	Blade Kit-Squeegee Gum

**Boost 32**

<b>Item</b>	<b>Ref. No.</b>	<b>Qty</b>	<b>Description</b>
<b>Pads &amp; Brushes</b>			
*	997005	1	White Pad (14x32) 5 pack
*	997004	1	Red Pad (14x32) 5 pack
*	997007	1	Blue Pad (14x32) 5 pack
*	997003	1	Black Pad (14x32) 5 pack
*	56383925	1	Pad-Brush-Green-14X32-4/CS
*	30795A	1	Two Sided Velcro
<b>41" Squeegee Blades (front &amp; rear)</b>			
*	56115335	1	Squeegee Kit-Blade-Pu
*	56115333	1	Squeegee Kit-Blade-Linatex
*	56115334	1	Squeegee Kit-Blade-Gum

**Disc 26**

<b>Item</b>	<b>Ref. No.</b>	<b>Qty</b>	<b>Description</b>
<b>Pad Driver &amp; Brushes</b>			
*	38035A	2	Pad Driver (13")
*	11438A	2	Poly Brush (13")
*	11437A	2	Soft Nylon Brush (13")
*	10382A	2	Lite Grit Brush (13")
*	11439A	2	Medium Grit Brush (13")
*	11440A	2	Heavy Grit Brush (13")
<b>32.5" Squeegee Blades (front &amp; rear)</b>			
*	11333A	1	Squeegee Blade Kit 32.5 Urethane
*	11339A	1	Squeegee Blade Kit 32.5 Linatex
*	11336A	1	Squeegee Blade Kit 32.5 Gum

\* = Optional, Not Included

## ACCESSORIES

### Disc 28

Item	Ref. No.	Qty	Description
<b>Pad Driver &amp; Brushes</b>			
*	38036A	2	Pad Driver (14")
*	11427B	2	Poly Brush (14")
*	10874A	2	Soft Nylon Brush (14")
*	10383A	2	Lite Grit Brush (14")
*	11431B	2	Medium Grit Brush (14")
*	11426B	2	Heavy Grit Brush (14")
*	56383920	2	Pad-Brush-Green-14-4/CS
<b>35" Squeegee Blades (front &amp; rear)</b>			
*	56112332	1	Blade Kit-Squeegee PU
*	56112331	1	Blade Kit-Squeegee Linatex
*	56112330	1	Blade Kit-Squeegee Gum

### Disc 34

Item	Ref. No.	Qty	Description
<b>Pad Driver &amp; Brushes</b>			
*	38034A	2	Pad Driver (17")
*	11424B	2	Poly Brush (17")
*	10875A	2	Soft Nylon Brush (17")
*	10384A	2	Lite Grit Brush (17")
*	11430B	2	Medium Grit Brush (17")
*	11425B	2	Heavy Grit Brush (17")
<b>41" Squeegee Blades (front &amp; rear)</b>			
*	56115335	1	Squeegee Kit-Blade-Pu
*	56115333	1	Squeegee Kit-Blade-Linatex
*	56115334	1	Squeegee Kit-Blade-Gum

### Cylindrical 28

Item	Ref. No.	Qty	Description
<b>Brushes</b>			
*	56412046	2	Poly Brush (5.7" dia.)
*	56412191	2	Soft Nylon Brush (5.7" dia.)
*	56412192	2	Hard Nylon Brush (5.7" dia.)
*	56412193	2	Lite Grit Brush (5.7" dia.)
*	56412194	2	Medium Grit Brush (5.7" dia.)
*	56412195	2	Heavy Grit Brush (5.7" dia.)
<b>35" Squeegee Blades (front &amp; rear)</b>			
*	56112332	1	Blade Kit-Squeegee PU
*	56112331	1	Blade Kit-Squeegee Linatex
*	56112330	1	Blade Kit-Squeegee Gum

\* = Optional, Not Included



**Clarke<sup>®</sup>**

9435 Winnetka Ave North  
Minneapolis, MN 55445

[www.clarkeus.com](http://www.clarkeus.com)

Phone: 800-253-0367

Fax: 800-825-2753

©2018 Nilfisk, Inc.

---

**A Nilfisk Brand**