

OPERATOR'S MANUAL

**FOR MODEL
KF-21PS and KF-28PS**

(Briggs & Stratton V-Twin Vanguard Engine)

PROPANE BURNISHERS

**WITH
Smart Air[™]**

EMISSIONS MONITORING SYSTEM



KENT

RECORD THIS IMPORTANT INFORMATION

DATE OF
PURCHASE _____

PURCHASED
FROM _____

ADDRESS _____

CITY _____ STATE _____ ZIP _____

PHONE _____ CONTACT _____

MACHINE SERIAL NUMBER _____

ENGINE _____

ENGINE SERIAL NUMBER _____

IMPORTANT PHONE NUMBERS

Medical Emergency _____

Police _____

Fire Department _____

Safe Operating Practices

for The Kent Company Propane Powered Burnishers

- Only allow qualified and trained personnel to operate equipment.
- Closely follow maintenance and operating instructions.
- Keep accurate records of maintenance and service in provided log book.
- Remember, routine maintenance **NOW** will prevent a breakdown **LATER**.
- Always check oil level before starting.
- Keep nuts and bolts tightened and hose connections snug.
- Refer to engine manufacturer's service manual or contact The Kent Company for engine repairs or adjustments not listed in this manual.
- Never alter or reconstruct the fuel system. To do so may be dangerous and will void the factory warranty.
- Always use U.L., C.T.C./D.O.T listed safety fill cylinders supplied by The Kent Company.
- Be careful not to cross thread the Rego gas line coupling at the fuel cylinder.
- Always store the fuel cylinder **outside** away from heat and direct sunlight.
- Never leave the machine running unattended.
- Always operate in a well ventilated area. (Catalytic mufflers need to warm up before they are effective).
- Check pad holder for cracks each time the pad is changed.
- Have the machine serviced by a certified technician, including an emission check, every three (3) months.
- Before attempting any service on the machine, turn the ignition switch "OFF" and remove the key to avoid accidental start-up.

WARNING: Keep hands and feet clear of rotating pad!

WARNING: Failure to follow the instructions and warnings appearing in this operating manual or on machine labels may result in serious injury to the person using the machine and possibly to other persons and property

NOTE: *This machine is manufactured for commercial use only.*

SAFE OPERATING PRACTICES (continued)

Propane Powered Floor Burnishers are designed and manufactured for high-speed commercial floor buffing only. These machines are designed to buff most modern types of floors including composition tile, stone, marble, terrazzo, and resilient floor covering using floor coatings designed for high-speed buffing.

Even though NFPA 58 8-4.5 says ...“these machines shall be permitted to be used in buildings frequented by the public, including the times when such buildings are occupied by the public.” The Kent Company suggests that the machines be operated when occupancy of a given work area is at a minimum.

These machines should not:

- Be used in nursing homes, hospitals, day-care centers etc.
- Be used by unqualified or untrained personnel.
- Be used unless properly maintained and adjusted.
- Be left running unattended.
- Be used on areas with obstructions such as thresholds floor outlet boxes etc.
- Be used in areas when loose tile or objects are present.
- Be used in rooms without proper ventilation.

These Propane Powered Floor Machines are designed with the burnishing head offset to the right side to make it easier to burnish the floor close to the edge. It is recommended to start burnishing on the right side of the isle, turn and come back down the isle in the opposite direction overlapping the previous path slightly. Continue this pattern until the floor area to be burnished has been covered with the last pass being on the right side of the machine. The forward speed is generally at a normal walking speed.

CAUTION: Do not allow the burnisher to operate without moving. It may burn the floor and could damage the floor covering.

SPECIFICATIONS:

<u>KF-21PS</u>		<u>KF-28PS</u>	
Pad	21" (53.3 cm)	Pad Size	28" (71.1 cm)
Pad Speed	2000 RPM	Pad Speed	1700 RPM
Width	22.75" (57.8 cm)	Width	30" (76.2 cm)
Length	51.5" (130.8 cm)	Length	58.25" (148.0 cm)
Engine	Briggs & Stratton 14 hp	Engine	Briggs & Stratton 14hp
Starting	12V Battery	Starting	12V Battery
Weight	192 lbs. (87 kg)	Weight	215 lbs. (97.5 kg)
Handle	Welded Steel Adjustable	Handle	Welded Steel Adjustable
Deck	Cast Aluminum Alloy	Deck	Cast Aluminum Alloy
Vibration	Less than 2.5 m/s ²	Vibration	Less than 2.5 m/s ²
Sound Level	87 db	Sound Level	87 db

TABLE OF CONTENTS

I. PROPANE MACHINE SAFETY	
A. Purpose	1
B. Refueling and Storage of Fuel Cylinders	1
C. Safety in Engineering	1
D. Use and Care	1
E. Canadian Safety Regulations	1
II. MACHINE PREPARATION	
A. Adding oil	1
B. Connecting Battery	2
C. Adjusting the Handle	2
D. Filling the Fuel Cylinder	2
E. Installing the Fuel Cylinder	2
III. OPERATING INSTRUCTIONS	
A. Starting Instructions	2
B. Operation	3
C. Idling and Stopping the Machine	3
D. Installing and Changing Buffer Pad	3
E. Storage	3
F. Transportation	3
IV. SCHEDULED MAINTENANCE	4
V. GENERAL MAINTENANCE PROCEDURES	
A. Fuel System	
1. Adjusting the Regulator	5
2. Engine Dust Filter	
3. Carburetor Air Filter	
4. Fuel Hose and Connections	
B. Engine Maintenance	5,6
1. Cooling Fins	
2. Head Bolts	
3. Changing Oil	
C. Belt Maintenance	6
D. Battery Maintenance and Replacement	7
E. Adjusting the Handle	8
VI. TROUBLESHOOTING	8
VII. DRAWING AND PARTS LIST	
Safe Fill Cylinder Head Layout	9
Wiring Diagram	9
Engine Drawing and Parts List	10,11
Deck Sub-Assembly Drawing and Parts List (KF-21PS)	12,13
Deck Sub-Assembly Drawing and Parts List (KF-28PS)	14,15
Handle Drawing and Parts List	16,17
Kent Limited Warranty	18

I. PROPANE MACHINE SAFETY

A. Purpose

The accepted demand for and use of propane powered floor machines underscores the need for responsible manufacturers and users to stress the importance of safety. This manual is designed to provide the information you need to ensure proper and safe use of propane powered floor machines.

In addition, we recommend operators of propane powered floor machines complete a program of training and certification on the safe operation of this equipment.

B. Refueling and Storage of Fuel Cylinders

Propane cylinders should only be filled by an authorized propane dealer. When not in use, they should always be stored outside in an upright position in a secure, tamper-proof, steel mesh storage cabinet. This cabinet may be located next to the building but with at least five feet of space between the cabinet and the nearest building opening (door or window).

The National Fire Protection Association (NFPA) Standard for Storage and Handling of LPGas is the appropriate authority on safe propane use. A copy of this publication is available through the National Fire Protection Association in Quincy, Massachusetts. (1-800-334-3555).

C. Safety in Engineering

The Kent Company engineers and manufactures machines utilizing U.L. (Underwriters Laboratories) and C.G.A. (Canadian Gas Association) approved components where possible. When a tag or tags bearing the U.L. and/or C.G.A. insignia is/are affixed to the machine, it indicates that the entire machine has been researched, tested, and is listed by one or both organizations as having met all of their safety criteria.

In some cases, the tag will be affixed to a particular component. This means that only the component is listed. Component recognition for the following parts is important: fuel cylinders, couplings, regulators, and fuel lines. We strongly recommend that you use only machines meeting the above minimum requirements.

Even though propane powered floor machines manufactured by The Kent Company meet the O.S.H.A. Time Weighted Average (TWA) standard for noise, we still recommend hearing protection be worn by the operator.

D. Use and Care

All machines manufactured by The Kent Company contain a detailed Operator's Manual. Safety dictates that before using any new equipment, read and understand the Operator's Manual. We strongly recommend this practice.

E. Canadian Safety Regulations

1. "A sign indicating "NO SMOKING" shall be permanently displayed at the storage area. The sign shall be in accordance with the sign required in Clause 10.12.3 of CAN/CGA-B149.2-M91, Propane Installation Code." : and
2. "When the cylinder is attached to the floor maintenance machine for use, the operator shall not leave the unit unattended except for short periods of time such as rest stops, washroom or meal stops." :and
3. "The requirements of 1.10.1 (e) and (g) do not apply in industrial buildings." : and
4. A floor maintenance machine shall only be used in buildings:
 - a) provided with continuous mechanical ventilation that removes the products of combustion to the outdoors of not less than 300 CFM for each 10,000 Btuh input or fraction thereof; or
 - b) provided with natural ventilation of not less than 300 CFM for each 10,000 Btuh input or fraction thereof, based on a maximum of one quarter air exchange per hour for the net building volume." : and
5. "The owner of a floor maintenance machine shall ensure that the operator has participated in a course authorized by the manufacturer of the unit on the safe handling of propane and the safe operation of the machine." : and
6. "The owner of a floor maintenance machine shall ensure that the unit is maintained in accordance with the manufacturer's recommended maintenance procedures in a safe operating condition and the owner shall maintain a record of the maintenance for a period of two years." : and
7. "Before transporting a floor maintenance machine, the cylinder shall be securely fastened, with the system valve closed and the cylinder shall be located in a well ventilated space."

II. MACHINE PREPARATION

A. Adding Oil

The Burnisher is shipped by overland freight with the correct amount of oil in the engine. Air freight shipments require the machine to be shipped without oil.

The machine is also shipped with the battery disconnected.

When filling a "dry" burnisher or changing oil, **add no more than 1.5 quarts for the Briggs & Stratton**, then check the dip stick in the fill cap. Add oil if necessary but **DO NOT OVERFILL! ALWAYS CHECK OIL BEFORE USING THE MACHINE.**

IMPORTANT: WHEN CHECKING OIL ON BRIGGS & STRATTON MODELS, SCREW CAP IN AND OUT AGAIN. ALWAYS MAKE SURE THE MACHINE IS SITTING LEVEL WHEN CHECKING OIL.

B. Connecting the Battery

Connect the **RED** positive battery cable **FIRST**.

Connect the **BLACK** negative battery cable **LAST**.

C. Adjusting the Handle

The burnisher handle adjusts for comfort and optimum control. Height may be changed to suit the individual operator. (see page 9)

D. Filling the Safety Fill Fuel Cylinder

The Kent Company uses the 20 lb. capacity aluminum safety fill cylinder which meets the D.O.T. 4E240 standards. These cylinders are also listed by U.L. Filling should **ONLY** be done by a qualified propane dealer. **FILL THROUGH THE STOP FILL VALVE ONLY.** (see page 9 for location). A properly filled cylinder should not exceed 80% of the rated capacity.

DO NOT attempt safety fill cylinder repair. Return the cylinder to your propane dealer if repair is necessary. Please note that D.O.T. regulations prohibit shipping of cylinders after the cylinder has been filled with propane.

E. Installing the Safety Fill Fuel Cylinder

Align the slot in the top flange of the cylinder with the locating pin on the machine. Strap the safety fill cylinder in place by clamping the toggle assembly to the cylinder band. Adjust the toggle assembly by screwing in or out in order to keep the tank firmly secured. Connect the fuel hose coupling to the service valve by turning right (clockwise). **HAND TIGHTEN ONLY.** Make sure coupling is not cross threaded and check for leakage by noting any odors of propane immediately after cylinder is connected. (It is sometimes easier to install if the connection to the service valve is made before strapping the cylinder in place)

TO REMOVE THE SAFETY FILL CYLINDER, reverse above procedure. Always connect or change cylinders in a well ventilated area.

III. OPERATING INSTRUCTION

A. Starting Instructions

1. Check oil and fuel levels
2. Check and clean engine air filter
NEVER RUN CONTINUOUSLY FOR MORE THAN 1 HOUR WITHOUT CLEANING OR CHANGING ENGINE DUST FILTER. (See "Scheduled Maintenance")
3. Check carburetor air filter. Change if necessary. (see "Scheduled Maintenance")
4. Turn propane service valve counter-clockwise to open
5. Allow machine to tilt backward (pad off floor) and move the throttle to the **SLOW** position.
6. Engage starter by turning the key-switch to the starting position for approximately 5 seconds. If the machine fails to start, let the ignition switch return to the run position (Do not turn off). Wait approximately 5 seconds and try again for another 5 seconds. (**NOTE:** do not engage starter for more than 10 seconds. Allow a 60 second cool-down period for each 10 second start-up cycle)
7. After engine starts, a GREEN light will flash for a 3 minute warm-up cycle of the SmartAir™ system.. (The machine may be operated during this warm-up period) After the warm-up cycle the green light will remain on steady as long as the machine is running safely.

B. Operation

After engine has started, allow approximately 30 seconds for the engine to "warm up" then advance the throttle to operating speed.

Engage the clutch by pulling up on the switch lever (mounted on the handle).

Lower the burnishing head to the floor while moving the machine forward slowly.

CAUTION! DO NOT RUN THE MACHINE WITHOUT MOVING. IF ALLOWED TO RUN IN ONE SPOT DAMAGE TO THE FLOOR MAY OCCUR.

To stop burnishing, push down on handle raising the burnishing head off the floor and release the clutch switch lever.

NOTE: This machine is equipped with SmartAir™ emission monitoring system & Catalytic muffler.

Upon starting the engine, the GREEN LED will flash for 3 minutes during a warm-up period. After that time it will be on steady unless a warning is being signaled. If the carbon monoxide in the exhaust is approaching a hazardous level the green light will go out and the RED LED will start flashing. When the red light goes to STEADY RED it will shut the machine down within 1 minute.

WARNING! Catalytic mufflers require a few minutes to warm up before effectively removing harmful emissions. Make sure of proper ventilation during this warm-up period!

C. Idling and Stopping the Machine

If for any reason the machine needs to idle for short periods, (less than 3 minutes), simply raise the burnishing head and release the clutch switch and move the throttle to the SLOW position. **The SmartAir™ system will not allow the engine to idle unnecessarily. After 2 minutes the GREEN LED will start flashing. In another 1 minute the engine will shut down.**

To stop the engine close the service valve on the fuel cylinder by turning it clockwise. (The engine will stop when the fuel in the lines is used up). **After the engine stops, turn the key switch to "OFF" position.** Failing to turn the key OFF may drain the battery.

D. Installing/Changing Burnishing Pad

1. With engine OFF turn the machine over on the **RIGHT** side (the starter side). This can be easily accomplished by pushing down on the right handle grip with some force while the machine is tilted back.

2. Remove centering device (if used) and carefully pull old pad off the velcro pad holding material.

3. **CAREFULLY INSPECT THE PAD HOLDER FOR CRACKS OR DAMAGE! Replace if necessary.**

NOTE: A damaged pad holder rotating at high speeds may be an extreme hazard if it should come apart.

4. Pull center from new pad, center pad on pad holder and secure with centering device (if used) or tuck the center under the plastic center ring.

5. Press pad onto velcro.

6. Return machine to upright position.

E. Storage

Only authorized, trained personnel should have access to propane cylinders and machines.

1. **Remove propane fuel cylinder when not in use and store it outside in a storage cage in accordance with NFPA Section 5 or Subsection 9.5.2 of CAN/CGA B149.2. Do not release or bleed propane inside of the building.**

Please consult your local Fire Marshal to insure that you are in compliance with local fire codes.

2. Store machine away from objects that may fall and damage it.

3. Never store machine or fuel cylinders near an open flame or heat producing devices.

4. Make sure machine is cleaned properly before storing.

5. Never store machines with cylinders installed, or spare cylinders, in an enclosed van or trailer.

F. Transportation

When transporting a propane powered floor machine with the fuel cylinder installed, the cylinder should be securely fastened with the service valve closed and the machine should be secured in the vehicle. Any propane fuel cylinders not installed on a machine should be securely fastened to avoid movement and damage. The service valves should be closed. Never store machines with cylinders installed, or spare cylinders, in an enclosed van or trailer.

It is a good practice to check propane cylinders for overfilling before transporting them. If overfilled, correct before loading them in the vehicle by venting the excess propane outside in a safe area using the fixed liquid level gauge.

IV. SCHEDULED MAINTENANCE

Following proper scheduled maintenance procedures will provide years of uninterrupted service.

BRIGGS & STRATTON VANGUARD ENGINE		REGULAR SERVICE PERIOD (Performed At Indicated Hour Intervals)				
		Break in 8 hrs.	Each Use	50 hrs.	100 hrs.	300 hrs.
ITEM or TYPE of SERVICE						
Engine Oil	Check Level		2			
	Change	2.4.5			2.4.5.	
Oil Filter	Change				4.5	
Engine Dust Filtler	Inspect		1			
	Clean/Change		1.2			
Carburetor Air Cleaner	Inspect		2			
	Clean/Change			2.4.5		
Belt	Inspect	2	2			
	Adjust/Replace	As Required (5 below)				
Fuel Hose & Connections	Inspect	2	2			
	Replace	If Signs of Wear are Present (3.5 below)				
Cooling Fins	Clean			2		
Burnishing Head Assembly	Inspect			6		
Pad Holder	Inspect	When Changing Pads				
	Replace	If Cracks Appear (7 below)				
Bolts & Connections	Inspect			6		
	Tighten			6		
Spark Plug	Clean/Replace			5.6	4.5	
Battery & Battery Cables	Inspect			2		
Exhaust Emissions	Check					3.5

1. Perform after each hour of operation.
2. Refer to Section V "GENERAL MAINTENANCE PROCEDURES".
3. These items should be serviced by an authorized The Kent Company Service Center.
4. Refer to Engine Manufacturer's "OWNER'S MANUAL" for recommended replacement.
5. Always enter maintenance performed in "SERVICE LOG BOOK".
6. Routine maintenance.
7. Refer to Section III "OPERATING INSTRUCTIONS" (D. 3.)

V. GENERAL MAINTENANCE PROCEDURES

A. Fuel System

The fuel system works from vacuum created by the engine running. Turning the fuel cylinder service valve ON pressurizes the system for flow to the carburetor once the engine starts to crank.

1. Adjusting the Regulator

NOTE: The regulator and carburetor have been "factory pre-set" and should not require any modification. Only The Kent Company authorized personnel, trained and certified in propane systems, should modify or adjust the system or its setting.

N.F.P.A. 58 8-1.4 states, "In the interest of safety, each person engaged in installing, repairing, filling, or otherwise servicing an LP-Gas engine fuel system shall be properly trained in the necessary procedures".

2. Engine Dust Filter

The engine dust filter should be **cleaned each hour** and after each use by shaking out the dust and then rinsing with mild detergent. Squeeze out the excess water (do not wring). Allow the filter to air dry. **Failure to maintain a clean engine filter will cause the engine to overheat. Also, it may cause the exhaust emissions to elevate to harmful levels.**

3. Carburetor Air Filter

- a. Loosen wing nut on top of the air cleaner cover.
- b. Remove foam pre-cleaner and paper filter element.
- c. Clean foam pre-cleaner using the same procedure as "2" above.
- d. Clean filter seal, making sure no dust is allowed in the carburetor inlet.
- e. Inspect paper element. Replace if dirty, bent or damaged.
- f. Install the clean paper element, pre-cleaner, air filter cover and wing nut.

NOTE: Failure to service the carburetor air cleaner may produce excessive carbon monoxide emissions and cause the SmartAir™ system to shut the engine down.

4. Hose and Fuel Connections

- a. Inspection
 - (1) Inspect hoses for abrasions and other signs of wear; replace all worn or damaged hoses.
 - (2) Check for gas leaks by spreading soapy water solution around all the connections while the service valve is turned ON and the fuel system is pressurized.
- b. Fixing Leaking Joints
 - (1) Uncouple bad joint, clean joint then apply pipe sealing compound (Loc-Tite Pipe Sealant with Teflon or equivalent) to the clean joint.
 - (2) Recouple the joint finger tight plus 1/2 turn.
 - (3) **Recheck for leaks using soapy water solution. Watch for bubbles at the joint with the fuel cylinder service valve turned on and the fuel system pressurized.**

B. Engine Maintenance

1. Cooling Fin Maintenance

- a. Remove the blower housing and other cooling shrouds.
- b. Clean the cooling fins as necessary using compressed air or pressure washer.
- c. Reinstall all housings and shrouds.

2. Head Bolt Maintenance

- a. Refer to Engine Manufacturer's "Service Manual".

3. Changing the oil

- a. Run engine for 5 minutes to warm oil, then stop the engine by closing the fuel service valve, allowing the engine to stop by itself. Turn the key "OFF". (Failing to turn the key "OFF" may run the battery down.)
NOTE: Must be running above 2150 RPM or SmartAir™ will shut the engine down.
- b. Locate the oil drain pipe located on the right side of the machine.
- c. Remove the cap by turning counter clockwise with a wrench.
CAUTION: do not pull it off!
- d. Allow oil to drain completely into the receptacle.
- e. Replace the cap by turning clockwise.
- f. Remove oil fill cap. Slowly add no more than 1.5 quarts of motor oil. Refer to Engine Owner's Manual for recommended oil.
- g. Check oil level with dip stick in oil fill cap. Add additional oil if necessary.
DO NOT OVERFILL AND NEVER RUN ENGINE LOW ON OIL!
IMPORTANT: WHEN CHECKING OIL ON BRIGGS & STRATTON MODELS, SCREW CAP IN AND OUT AGAIN. ALWAYS MAKE SURE THE MACHINE IS SITTING LEVEL WHEN CHECKING OIL.
- h. Replace fill cap. Hand tighten only.

C. Belt Maintenance (Back-Side Idler System)

To inspect the belt it is necessary to turn the machine over. The machine should be turned on its' right side for Briggs & Stratton models. This can be easily accomplished by pushing down on the handle grip with some force while the machine is tilted back. (If badly cracked or worn it should be replaced)

To check for the proper tightness squeeze the belt together. The belt should depress between 1/4 and 1/2 inch.

To Change belt:

1. Turn the machine over on its' right side for Briggs & Stratton models.
2. Remove the pad holder by holding the end of the shaft on the top of the machine with a 3/4 inch wrench and turn the pad holder counter-clockwise.
3. Using the 3/4" wrench to turn the end of the spindle shaft on top of the machine while removing the old belt from the spindle pulley.
4. Finish removing the belt from the engine pulley, if necessary.
5. Check engine pulley for correct alignment with the spindle pulley. Check hardware attaching pulleys for correct tightness.
6. Install the new belt onto the engine pulley.
7. Reinstall the new belt onto the spindle pulley using the 3/4" wrench to turn the spindle clockwise. Make sure the belt is correctly placed on the idler pulley.
8. Reinstall the padholder onto the spindle shaft.
9. Turn the machine upright in the burnishing position.
10. Check belt for correct operation. Check all hardware for correct tightness.

D. Battery Maintenance and Replacement

The battery supplied with this machine is a sealed/gelled, electrolyte, maintenance free type. It should never need servicing.

When battery replacement becomes necessary, the replacement should have the same specifications as the original. If in doubt, contact the Kent Company Customer Service Representative. To replace:

1. Remove the propane fuel cylinder from the machine.
2. Raise battery cover to expose battery.
3. Disconnect battery cables from terminals. Always disconnect the **BLACK** cable first.
4. Remove battery "hold-down" clamp.
5. Lift old battery out and replace with new battery.
6. Reinstall "hold-down clamp. **NOTE: DO NOT OVER TIGHTEN HOLD-DOWN CLAMP.** Doing so may cause the battery to rupture.
7. Connect the **RED** positive battery cable first
Connect the **Black** negative battery cable last.

Dispose of old battery in the proper manner.

SAFETY INSTRUCTIONS
RECHARGEABLE BATTERY

! DANGER

ALL BATTERIES CONTAIN CORROSIVE ACIDS AND
PRODUCE EXPLOSIVE GASES DURING RECHARGING

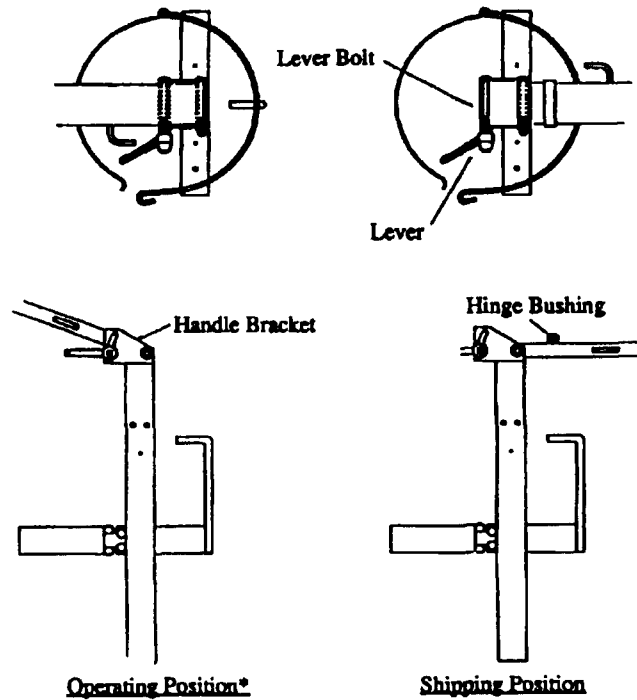
GAS EXPLOSION CAN CAUSE BLINDNESS OR INJURY SHIELD EYES	BATTERY ACID CAN CAUSE BLINDNESS OR SE- VERE BURNS
--	---

- * Do not make direct contact between battery terminals as this can cause an explosion or fire.
- * Batteries should not be stored discharged.
- * Only adults should recharge batteries.
- * Keep charger away from children.
- * Use only the charger provided by the equipment manufacturer.
- * Do not recharge batteries upside down.
- * Charging produces explosive gases. Charge battery in a well ventilated area away from sparks, flames and smoking.
- * Disconnect charger from battery after 24 hours.

INTERNAL TAKE MILK, WHITES OF EGGS, WATER. DO NOT INDUCE VOMITING	EXTERNAL FLUSH IMMEDIATELY FOR 15 MINUTES IF ACID GETS IN EYES OR ON SKIN
---	---

CALL PHYSICIAN IMMEDIATELY

E. Adjusting the Handle



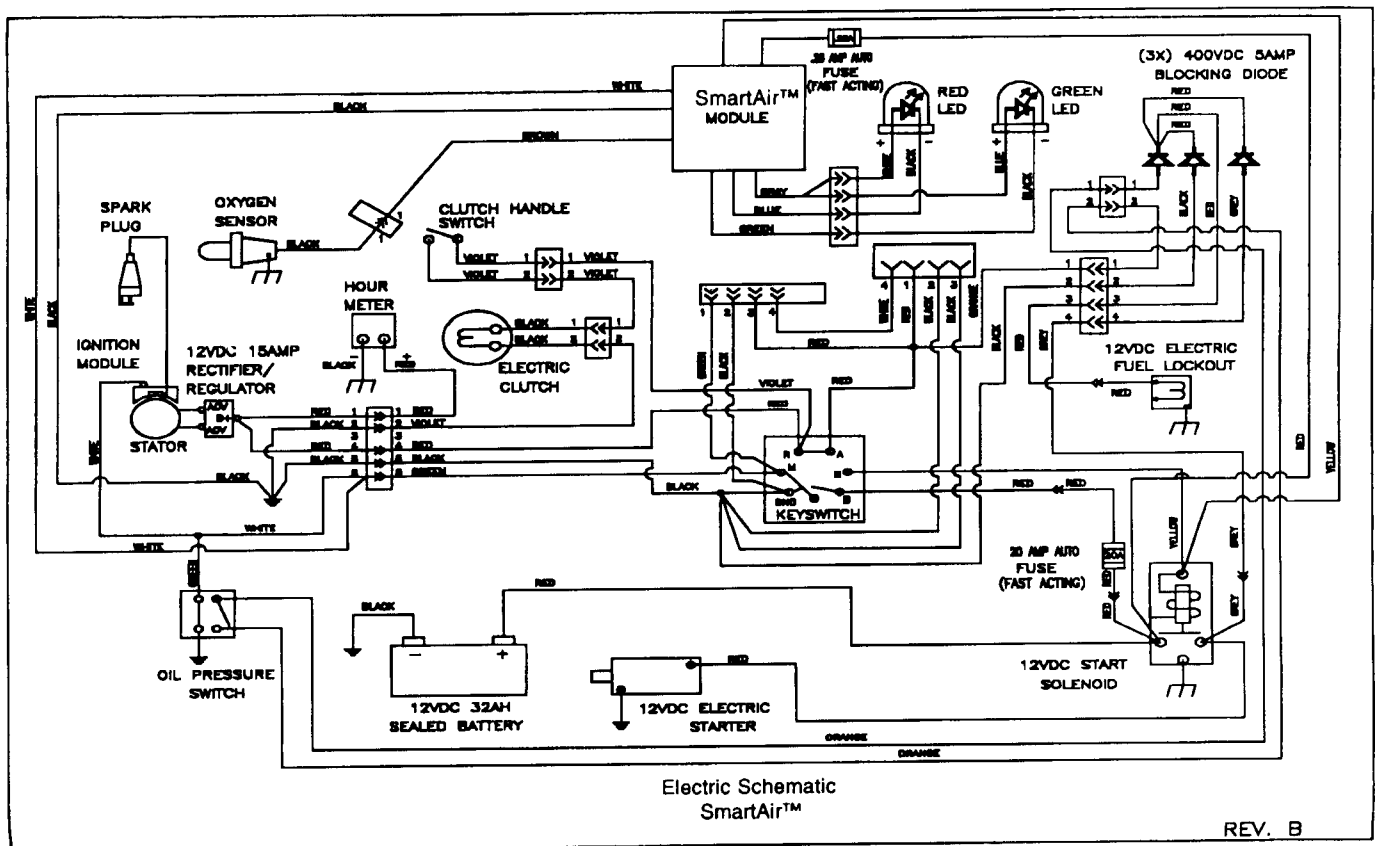
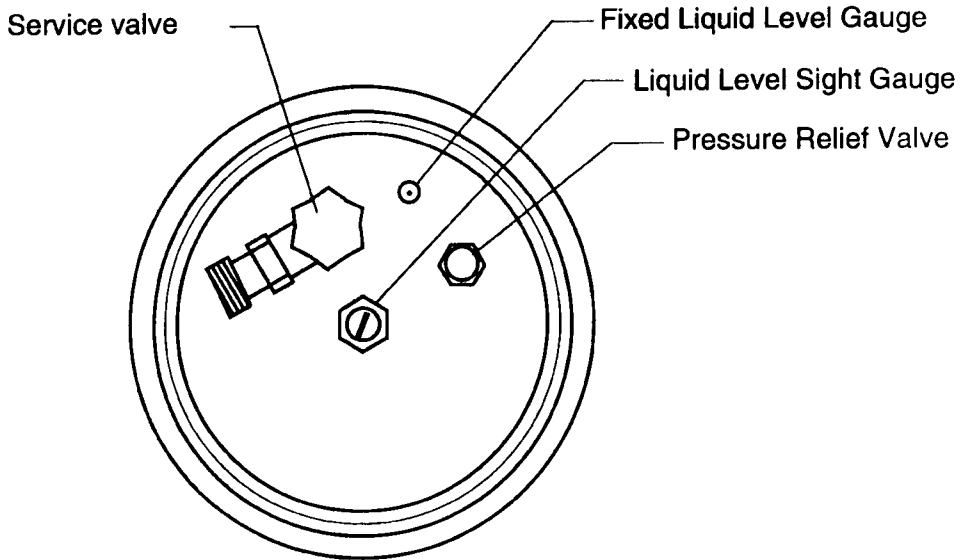
* Insert lever bolt through handle bracket and hinge bushing to locate handle in operating position.

VI. TROUBLE SHOOTING

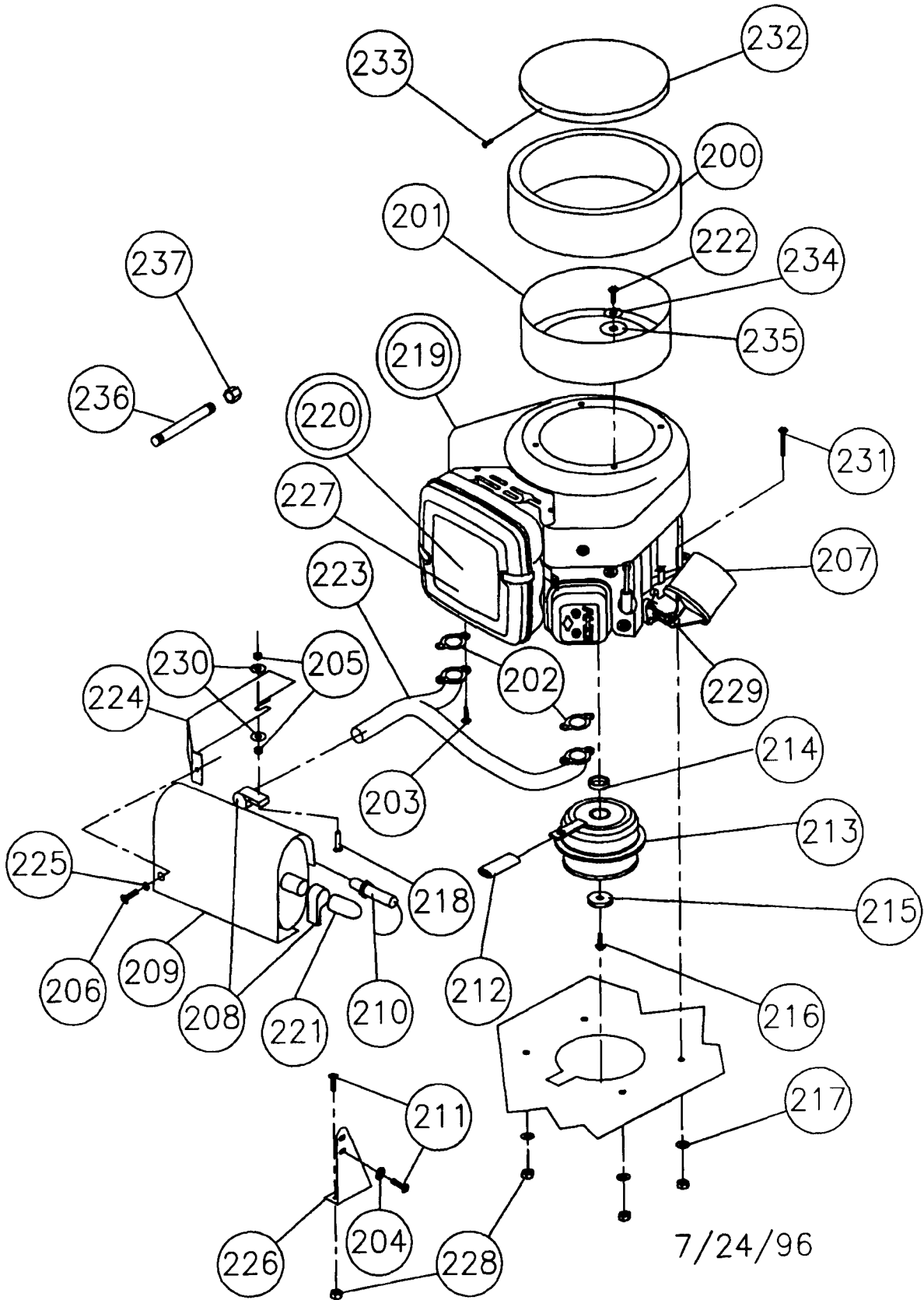
<u>SYMPTOM</u>	<u>POSSIBLE CAUSES</u>
1. Hard to Start	Spark plug or head bolts loose. Blown head gasket. Insufficient vacuum. Coil, air gap needs adjusting. Low oil.
2. Will Not Start	No fuel, Blown head gasket, Insufficient vacuum, Defective Spark Plug, Defective coil, Dirty air filter, Low oil, Fuse blown in SmartAir™, Wires broken or disconnected.
3. Engine lacks power	Leaking head gasket. Insufficient vacuum. Governor needs adjusting. No compression - worn rings. Check air filters.
4. Smell of burned rubber	Belt out of adjustment.
5. Machine vibrates	Loose bolts. Pad not centered.
6. Machine "Bogs Down" When in Use	Operator is bearing down too hard. Dirty air filters.
7. Machine Pulls To One Side	Check for bent wheel bracket.
8. Engine stops running	Dirty air filter, High exhaust emissions, Out of fuel, Low oil.

VII. DRAWING AND PARTS LIST

A. Safety Fill Cylinder Head Layout



KF-21PS and KF-28PS ENGINE



7/24/96

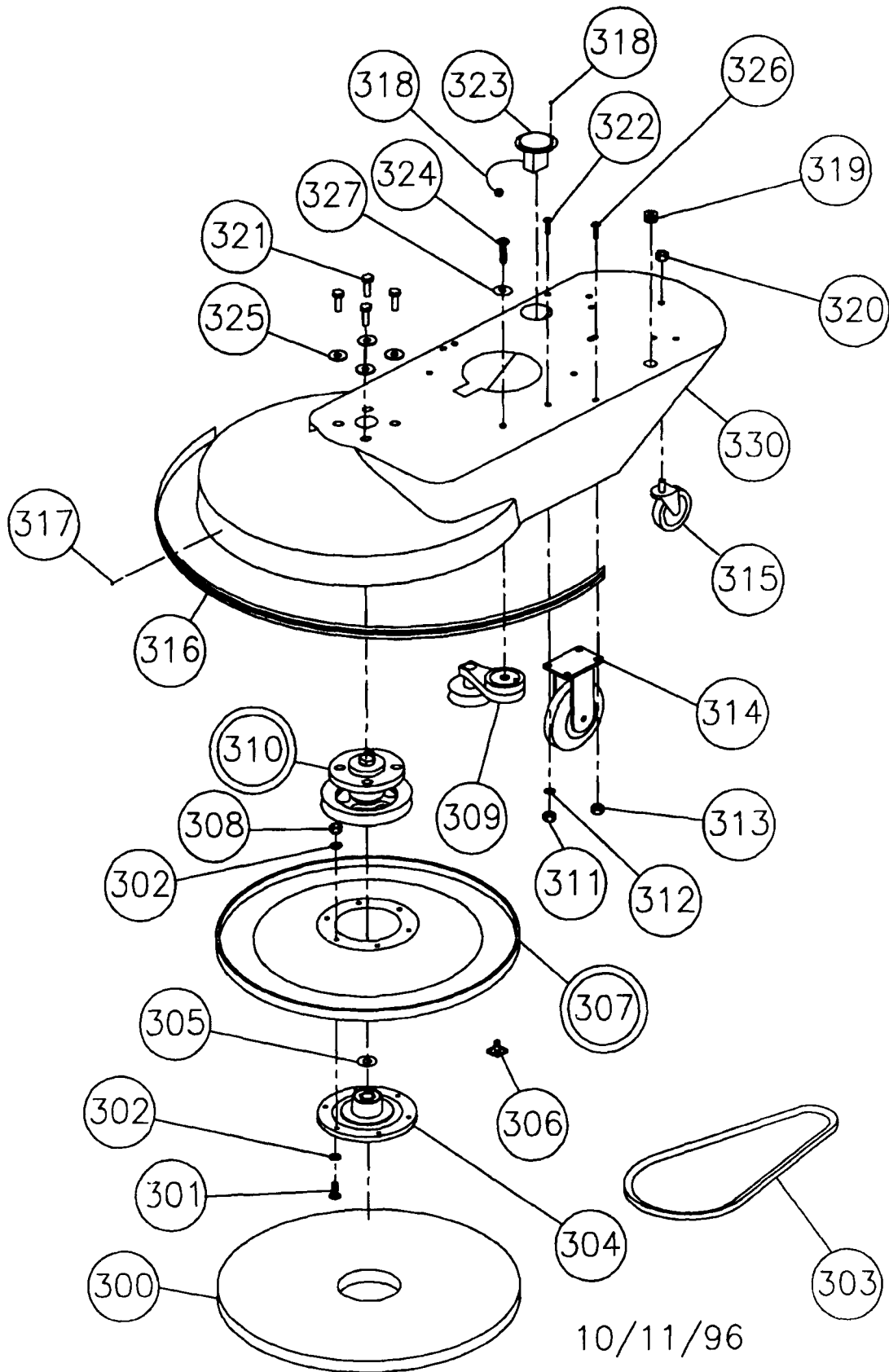
KF-21PS and KF-28PS

Engine Parts List for Briggs & Stratton 14hp V-Twin Engines

REF#	PART#	DESCRIPTION	QTY
200	CMP960001	Filter, Precleaner	1
201	COC140282402P	Support, Pre-Cleaner	1
202	CBS805024	Gasket, Exhaust	1
203	CBS805158	Screw, Exhaust Manifold Mounting	4
204	CKCX2578	Washer	2
205	CNB5530	Nut, 3/8"-16	2
206	CNB52816	Screw, 1/4-20 X 1/2"	6
207	CBS491056	Oil Filter	1
208	C01033000	Clamp, Muffler	2
209	C01004101	Muffler, Front Mount, Catalytic	1
210	C01042500	Oxygen Sensor	1
211	CKCM639016	Screw, Hex, Flange, M6 x 1.0 x 16	3
212	CMP4790	Norprene Tubing	2.4"
213	CMP4787	Clutch, Model 5215-63	1
214	CMP4800	Spacer, Clutch Top	1
215	CMP4805	Spacer, Bottom Clutch Hub Base	1
216	C01050000	Screw, Cap, Flange HH, 7/16-20 x 1.5 (GR-5)	1
217	CNB9267	Washer, Flat 5/16"	4
218	C01038700	Bolt, Carrige 3/8"-16 x 2"	1
219	C01042301	Engine Assembly, Briggs	1
220	C01018600	Spud-End Assembly	1
221	C01031800	Deflector, Exhaust	1
222	C01052100	Screw, M6 X 8, Slotted Pan Head	4
223	See Below	See Below	
224	C01038500	Shield, Manifold	1
225	CNB6110	Washer, Lock, 1/4"	5
226	C01032900	Muffler Bracket	1
227	CBS5050	Air Filter and Foam Pre-Cleaner	1
228	CNB3265	Nut, Lock, 5/16-18	6
229	C01042400	Oil Pressure Switch	1
230	CNB9267	Washer, Flat, 5/16	2
231	C01036900	Screw, Flange, Hex HD, 5/16-18 x 1.5"	4
232	CMP001700	Cover, Pre-Cleaner, Painted	1
233	COC8150340P	Screw, Hex Flange	3
235	C01052000	Washer, Fender	4
236	See Below	See Below	
237	C01054300	Cap, Pipe	1
223	C01032300	Manifold, V-Twin (For KF-21PS)	1
	C01032301	Manifold, V-Twin, Raised End (For KF-28PS)	1
236	C01054200	Nipple, Pipe, 4" (For KF-21PS)	1
	C01054201	Nipple, Pipe, 5" (For KF-28PS)	1

CBS 497401 Starter
CK6 1213202 Spark Plug

The Kent Company KF-21PS SelectGloss
Deck Parts Diagram



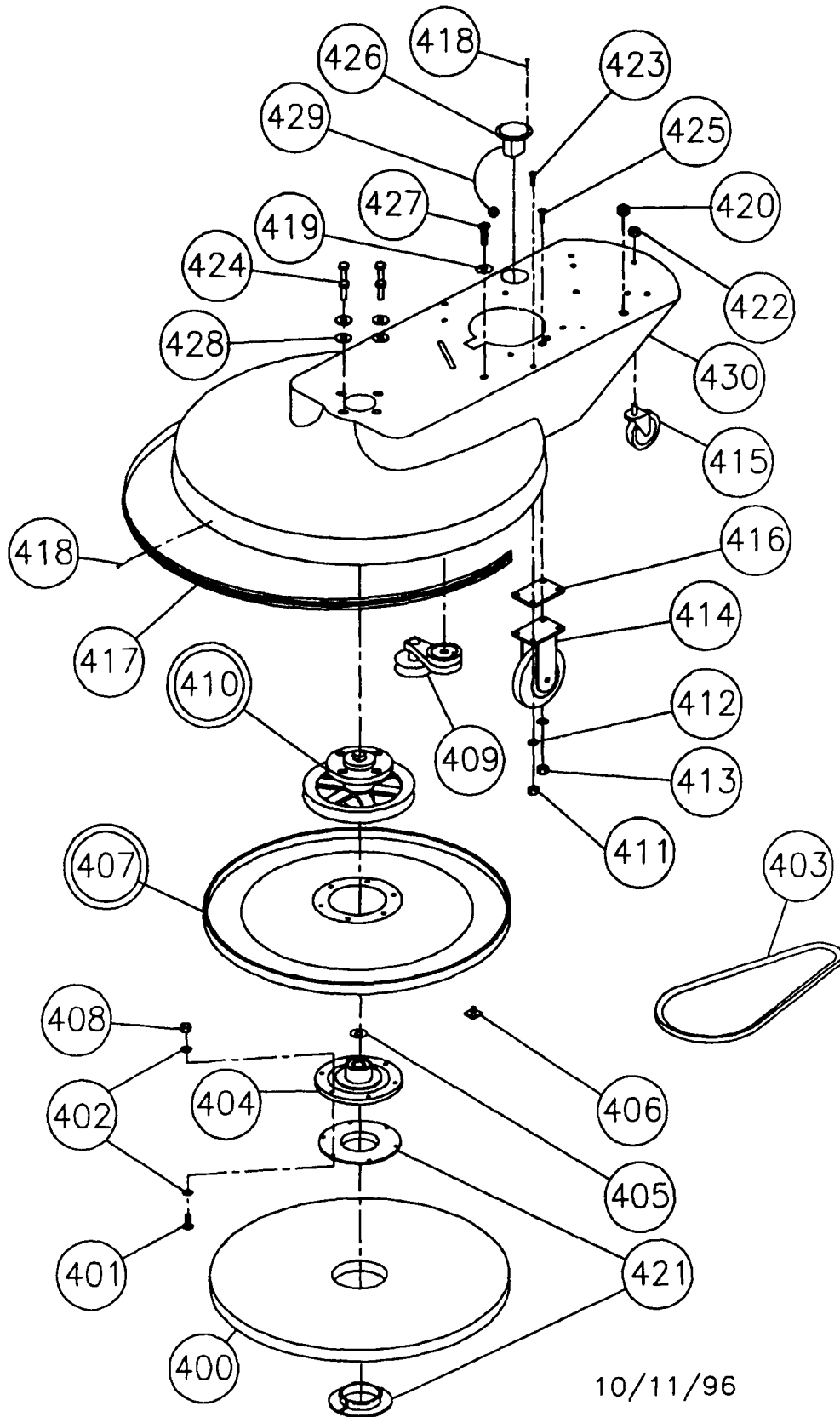
The Kent Company Parts List

KF-21PS SelectGloss

Deck Sub-Assembly

REF#	PART#	DESCRIPTION	QTY
300	C6021	Pad, 21, Blue Blend	1
301	CNB9308	Bolt, Button HD 1/4"-20UNC x 1	6
302	CNB3350	Washer, Flat 1/4"	12
303	C01048500	Belt, BX-37	1
304	CTB1012	Flexi-Swivel	1
305	CNB5700	Washer, S.S. .755 x 1.005 x .060	1
306	CMP8310	Velcro Stud	50
307	CMP8275	Padholder, 21" W/ Studs	1
308	CNB3275	Nut, Lock 1/4"	6
309	C01029901	Tensioner, Assembly	1
310	CMP7245	Spindle Asm., w/BK65 Pulley	1
311	CNB3260	Nut, Lock 5/16"-18NC	1
312	CNB6111	Washer, Spring Lock 5/6"	1
313	CNB3265	Nut, Lock 5/16"-18 x 1	3
314	CMP9420	Wheel, w/Bracket 5"	2
315	C01019601	Wheel, Caster Rear	1
316	CMX1010	Moulding, Bumper	4.8 Ft.
317	CNB2643	Rivet, Pop 1/8" x 1/4"	11
318	CMP9613	Wire, Ground Hour Meter Assembly	1
319	CNB6525	Grommet 1/2" x 3/8" x 1"	1
320	C01031600	Nut, Jam 3/8" x 16	1
321	CNB6863	Bolt, Hex HD 1/2" x 1" NC	4
322	CNB5000	Bolt, Carrige 5/6"-18 x 1"	1
323	CMP9610	Meter, Hour (RND)	1
324	CNB6044	Screw, Cap 3/8" x 1 1/4"	1
325	CNB9269	Washer, Flat 7/16"	4
326	CNB5282	Bolt, Hex HD 5/16"-18 x 1"	3
327	CNB3450	Washer, Flat, 3/8	1
330	C01019506	Deck, Painted Complete	1
	CMP9038	Inside Tension Belt	1

The Kent Company KF-28PS SelectGloss
Deck Parts Diagram

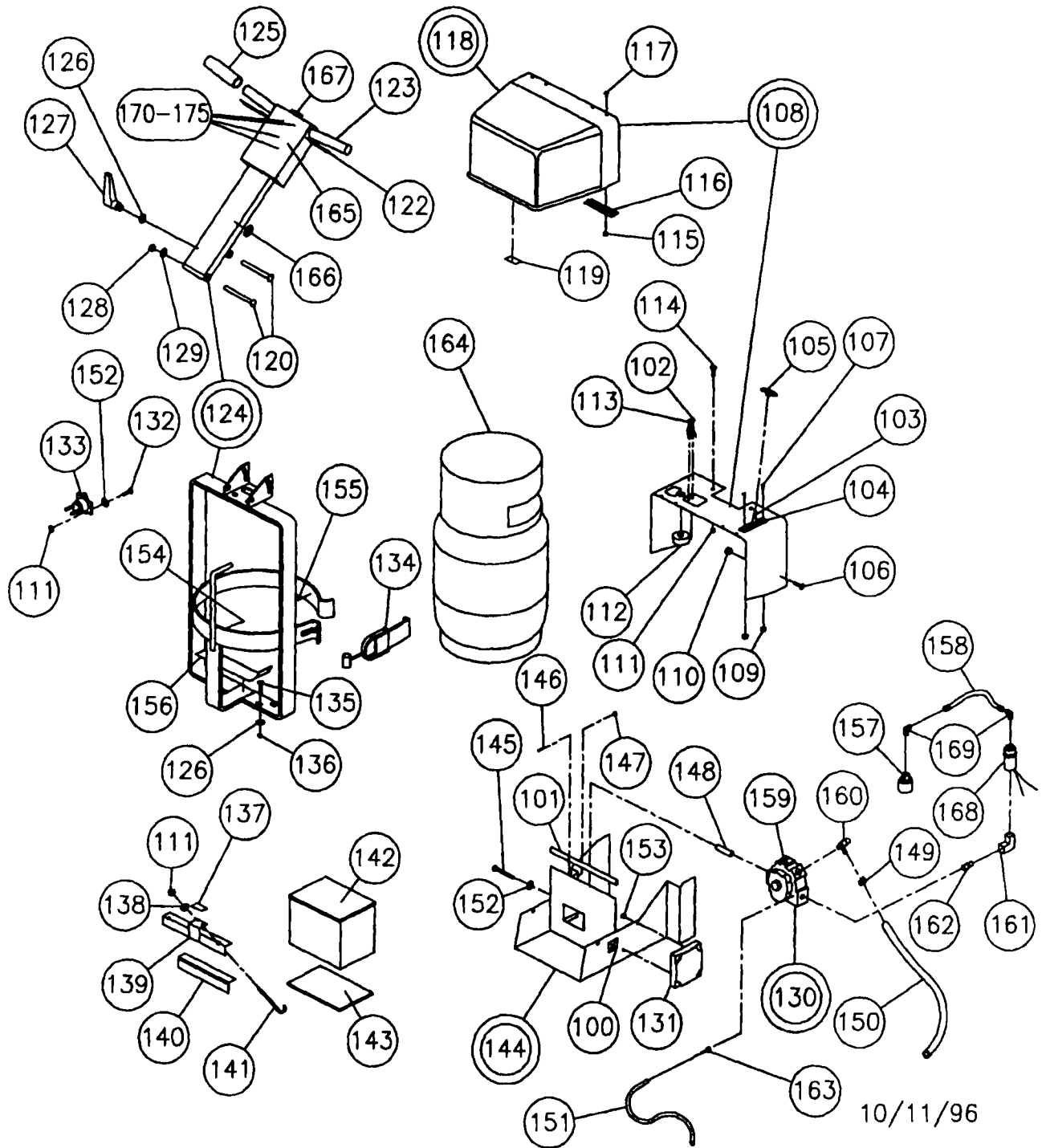


10/11/96

**The Kent Company KF-28PS SelectGloss
Deck Sub-Assembly Parts List**

REF#	PART#	DESCRIPTION	QTY
400	C6028	Pad, 28 Blue Blend	1
401	CNB9319	Bolt, Button HD 1/4"-20UNC x 1.25	6
402	CNB3350	Washer, Flat 1/4"	12
403	CMP8080	Belt, BX-51	1
404	CTB1210	Flexi-Swivel	1
405	CNB5700	Washer, S.S. .755 x 1.005 x .060	1
406	CMP8310	Velcro Stud	68
407	CMP8280	Padholder, 28" W/ Studs	1
408	CNB3275	Nut, Lock 1/4"	6
409	C01029901	Tensioner, Belt	1
410	CMP7240	Spindle Asm. w/ BK-90 Pulley	1
411	CNB3260	Nut, Lock 5/16"-18NC	2
412	CNB6111	Washer, Spring Lock 5/6"	2
413	CNB3265	Nut, Lock 5/16"-18 x 1	3
414	CMP9420	Wheel, w/Bracket 5"	2
415	C01019601	Wheel, Caster Rear	1
416	CMP4810	Wheel Block	1
417	CMX1010	Moulding, Bumper	6.5 ft.
418	CNB2643	Rivet, Pop 1/8" x 1/4"	11
419	CNB3450	Washer, Flat 3/8	1
420	CNB6525	Grommet 1/2" x 3/8" x 1"	1
421	CMP8505	Pad Grab III	1
422	C01031600	Nut, Jam 3/8" x 16	1
423	CNB5290	Bolt, Hex HD 5/16"-18 x 1-1/2	3
424	CNB6863	Bolt, Hex HD 1/2" x 1" NC	4
425	CNB5050	Bolt, Carriage 5/6"-18 x 1-1/2	1
426	CMP9610	Meter, Hour (RND)	1
427	CNB6044	Screw, Cap 3/8" x 1 1/4"	1
428	CNB9269	Washer, Flat 7/16"	4
429	CMP9613	Ground Wire, Hour Meter	1
430	C01039605	Deck, Painted Complete	1
	CMP3601	Regulator Repair Kit	1

The Kent Company KF-21PS and KF-28PS SelectGloss Handle Diagram



10/11/96

The Kent Company KF-21PS and KF-28PS SelectGloss

HANDLE PARTS LIST

REF#	PART#	DESCRIPTION	QTY	REF#	PART#	DESCRIPTION	QTY
100	CIN1004	Mounting Base, 4-Way Adhesive	2	138	CNB3350	Washer, Flat 1/4"	2
101	CIN1015	Battery Trlm	.77 ft.	139	CMP6920	Battery Clamp	1
102	CIN4570	Light, Fault Red	1	140	CMP6950	Isolator, Rubber Battery Clamp	2
103	C01042200	Throttle Control	1	141	CMP6930	Battery Clamp Hook	2
104	C01038100	Throttle Plate	1	142	CSS0012	Battery, 12V	1
105	C01005200	Knob, Throttle	1	143	CSS1212	Battery Pad	2
106	CNB5282	Bolt, Button HD 5/16-18 x 1"	4	144	C01016502	Battery Tray Assembly	1
107	CNB9515	Screw, Pan HD 6-32 x 1/2"	2	145	CNB001000	Screw, Cap, HH, 1/4-20 x 2-3/4	2
108	C01017803	Battery Cover Sub-Assembly, BA	1	146	CMX1011	Screw, Machine 8-32 UNF	1
109	CNB9530	Nut, Lock 6-32	2	147	CNB9710	Nut, 8-32 Keps Zinc	1
110	CNB3265	Nut, Lock 5/16	4	148	CMP6960	Regulator Spacer	2
111	CNB3275	Nut, Lock 1/4	6	149	CNB7282	Hose Clamp	2
112	CKC2509904	Switch, Starter	1	150	CNB2470	Fuel Line 3/8	3 ft.
113	CMP5241	Light, Indicator, Green	1	151	CNB2460	Hose, Vacuum, 3/32"	3 ft.
114	CNB9308	Bolt, Button Head 1/4-20 x 1	2	152	CMX1115	Washer, Starlock 1/4	4
115	CNB9735	Nut, Lock, 10-24 Nylon	4	153	C01053000	Nut, 10-32, Keps	2
116	CMP6940	Hinge, Battery/Regulator Cover	2	154	CMP6600	Velcro, Loop, Black	20 in.
117	CNB5330	Screw, Machine, 10-24 x 1/2	4	155	CMP6600	Velcro, Loop, Black	14 in.
118	C01018301	Cover, Regulator/Fuellock Assembly	1	156	CMP6600	Velcro, Loop, Black	12 in.
119	CMP6600	Velcro, Loop, Black	2 in.	157	CMP4500	Coupler	1
120	CNB9460	Bolt, Carriage, 3/8-16 x 4	2	158	CMP4340	Regulator Hose, 12"	1
122	C056089	Lever Bar	1	159	CMP3600	Regulator, Dry Gas	1
123	CFX-6065	Handle Weldment	1	160	C01035700	Fuel Adjustment Assembly	1
124	CMP003800	Handle, Painted	1	161	CMP4332	Fitting 1/4NPT, Female Brass	1
125	C047418	Handle Grips	2	162	CMP4325	Fitting, 3325 x 4	1
126	CNB9267	Washer, Flat, 5/16	6	163	C01043800	Barb, Hose, 1/8 NPT-1/4	2
127	CMP5950	Handle, Adjustable Lever	1	164	C01052302	Cylinder, Safety Fill	1
128	CNB9470	Nut, Acorn, 3/8-16UNC	1	165	CFX-6066	Switch Box Cover	1
129	CNB3450	Washer, Flat, 3/8	1	166	C055868	Grommet	1
130	C01017102	Regulator Sub-Assembly, BA	1	167	C050588	Latch, Safety	1
131	C01046200	Module, Smart Air	1	168	CMP4712	Fuelock, 12V	1
132	CNB3001	Bolt, Button HD 1/4-20 UNC	1	169	CMP4330	Fitting, 49 x 6	2
133	CMP6431	Solenoid, 12VDC	1	170	C046648	Spring, Compression	2
134	CMP6500	Toggle Tank Strap	1	171	C048785	Spring, Extension	1
135	CNB5520	Bolt, Carriage 3/8-16 x 1 1/4"	5	172	C005467	Pin, Roll, 1/8 x 1	2
136	CNB3267	Nut, Lock 3/8 NC	5	173	C004253	Washer, Lock, #10	2
137	CMP8300	Velcro Hook	2 in.	174	C026903	Switch, Micro	1
				175	C005316	Screw, 10-24 x 3/8	2

THE KENT LIMITED WARRANTY

Your Kent equipment which has been manufactured, tested, and inspected in accordance with carefully specified engineering requirements, is warranted to be free from defects in material and workmanship. This warranty is, however, subject to the following qualifications, conditions, and limitations which are set forth to provide you and all users of the equipment with information concerning the duration, extent, availability, and applicability of the Kent limited warranty, the procedure to be taken to obtain its performance, and other information concerning the Kent warranty policy.

The Kent Limited Warranty is extended to the original end user as follows

Automatic scrubber vacs (excluding the KA33BR) and all battery operated burnishers carry a three year parts replacement and one year labor warranty. Batteries are warranted on a prorated basis for one year. Battery chargers are warranted by the manufacturer for one year. Gasoline and Propane engines are warranted by the manufacturer for a period of one year. Replacement parts are covered for the remainder of the machines warranty or 90 days, whichever is longer. All sweepers, all pressure washers, all propane burnishers, and the KA33BR have a one year parts and labor warranty. Poly components carry a ten year replacement warranty with one year service labor. This warranty will not cover damage attributable to the following:

- :Improper, unreasonable or negligent use or abuse of the equipment.
- :Use of the equipment with hot water (over 130° F, or 54° C).
- : "Warpage", "Creepage", or "Distortion" of the part so long as the same does not interfere with normal operation.
- :Abrasions or punctures of the equipment.

The start date of the warranty coverage shall be the date the machine was shipped from the factory, or with proof of purchase, the purchase date of the original end user. The start date of the warranty shall not exceed one year from the date that the unit leaves the factory.

Parts of Kent Equipment not covered by the Kent Limited Warranty

Certain parts of Kent Equipment require replacement in the ordinary course of use due to normal wear by reason of their characteristics. These are normal wear items such as cords, squeegee blades, belts, gaskets, bumpers, carbon brushes, filters, hoses, bags, etc.

Exceptions and Exclusions from Warranty

Defects, malfunctions, failure, or damage of the equipment caused by improper, unreasonable or negligent use or abuse of the equipment are excluded from this warranty. If repair is done to the equipment by anyone other than those designated as authorized to perform such work without having obtained factory authorization in writing, the Kent Company at its sole option, may determine that this warranty will not apply and that reimbursement for such repair will not be made because of the failure to comply with such factory instructions.

Procedure to be taken to obtain performance of warranty repair

To secure repair of the equipment or any warranted parts under this warranty, the following procedure must be taken. The inoperative equipment or warranted parts together with satisfactory evidence of the purchase date, must be delivered, with shipping and delivery charges prepaid, to one of the following:

- :The dealer from whom purchased
- :Any Kent distributor's service department in the United States.
- :Any Kent authorized service station in the United States.

If you are unable to locate any of the foregoing, you may write or otherwise communicate with the Kent Company for instructions before repair service is performed by anyone else. In such event, The Kent Company will provide either the location of a closely available Kent service department or other factory instructions. In the event that no closely available service department is available, Kent at its discretion will repair or replace the part or equipment at the factory, the products will be returned to the owner freight prepaid. No warranty will be honored without proof of purchase, the model number, and serial number if applicable.

Replacement

In the event of a defect, malfunction, or failure of your Kent equipment or any warranted part to conform with warranty, The Kent Company may, at its sole option and own expense, replace the equipment or any warranted part with another new identical or reasonably equivalent model or part in lieu of repairing the defect.

No Refund of Purchase Price

The Kent Company will not, as a matter of its warranty policy, refund the customer's purchase price.

Warranty Registration

Your Kent Company distributor from whom you purchased your equipment is responsible for the registration of your warranty with the factory. We ask that you cooperate with your distributor in supplying the necessary information on the warranty card so that we may better serve you. Any information or questions that you may have concerning your Kent equipment or this warranty may likewise be secured from the factory. This warranty gives you specific legal rights, and you may also have other rights which vary from state to state.



KENT

The Kent Company

**P.O. BOX 1665 ELKHART, IN 46515
PHONE: 219-293-8661 OR 800-334-1083**

LT003700-1096