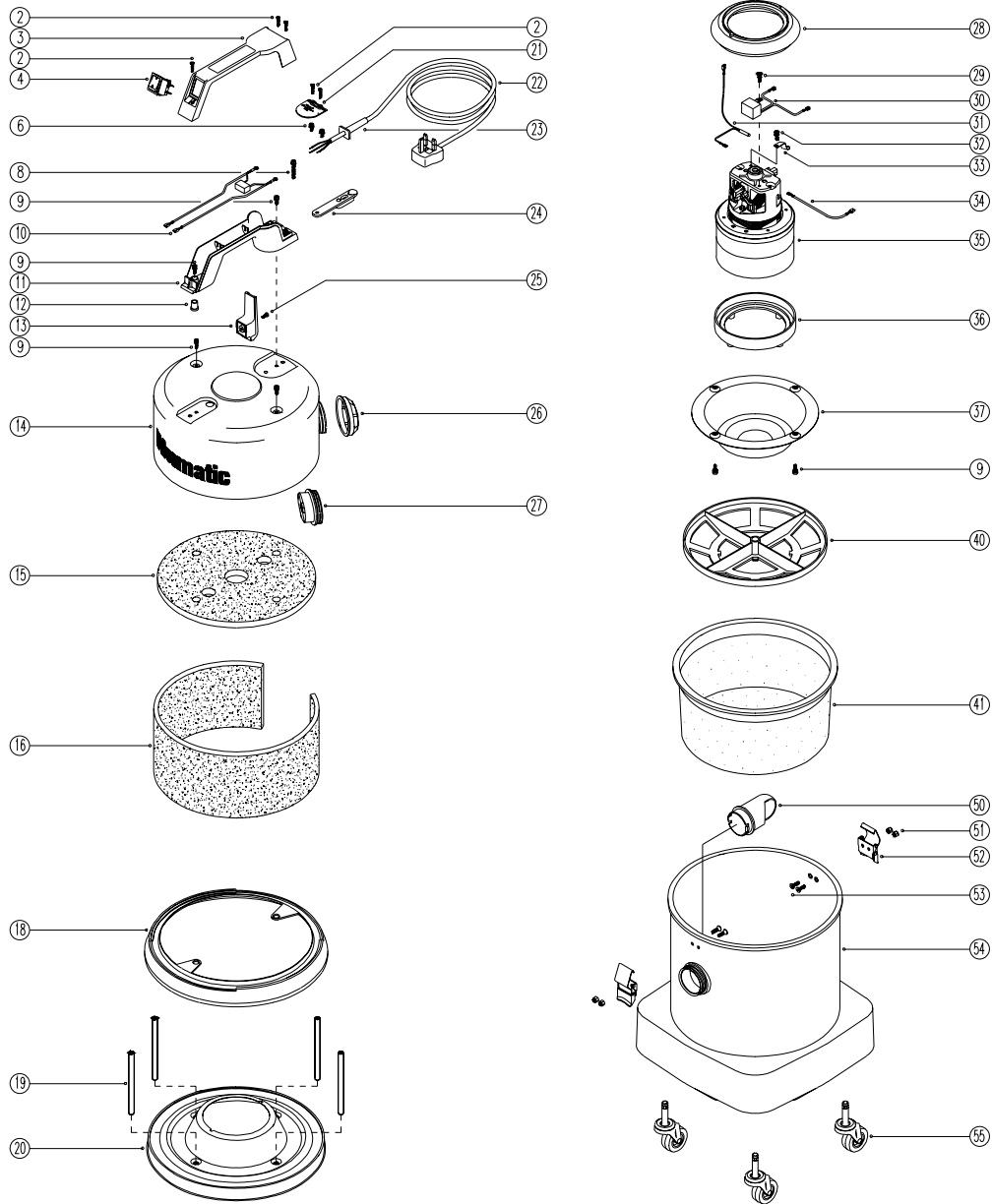


Spare Parts

Model No. NV380

Numatic, International, Chard, Somerset, TA20 2GB.
Tel: 01460 68480 Fax: 01460 68560
Sales - Tel: 01460 68600 Fax: 01460 68458

231657
DRAWING:EXP281 ISS:04
22/12/98



SPARE PARTS

| POS. | PART No | DESCRIPTION |
|------|----------|--|
| 1 | | |
| 2 | 219107 | No6 x 5/8" Long Plastite Screw |
| 3 | 206213 | Handle Cover |
| 4 | 220286 | Rocker Switch |
| 5 | | |
| 6 | 219090 | M4 x 8mm Long Sems Screw |
| 7 | | |
| 8 | 219274 | M4 x 25mm Long Stets Screw (3 Core Machines) |
| 9 | 219047 | M5 x 10mm Long Sems Screw |
| 10 | 220142 | Suppressor Assembly (2 Core Machines) |
| | 320003 | Brown Link Wire } (3 Core Machines) |
| | 320183 | Blue Link Wire } |
| 11 | 206187 | Handle Body Moulding (2 Core Machines) |
| | 320291 | Handle Body Moulding (3 Core Machines) |
| 12 | 220061 | Cable Bush |
| 13 | 206006 | Cable Hook |
| 14 | 401702 | Red Head Top (No Logo) |
| | 401706 | Light Blue Head Top (No Logo) |
| | 401708 | Tex Green Head Top (No Logo) |
| | 401214 | Tex Yellow Head Top (No Logo) |
| | 401702NU | Red Head Top (Black Numatic Logo) |
| | 401706NU | Light Blue Head Top (Black Numatic Logo) |
| | 401708NU | Tex Green Head Top (Black Numatic Logo) |
| | 401214NU | Tex Yellow Head Top (Black Numatic Logo) |
| 15 | 203005 | Top Felt |
| 16 | 203001 | Side Felt |
| 17 | | |
| 18 | 202006 | Buffer Ring |
| 19 | 208009 | 102.5mm Long Aluminium Spacer |
| 20 | 401011 | Red Top Motor Housing |
| | 401200 | Light Blue Top Motor Housing |
| | 401174 | Tex Green Top Motor Housing |
| | 401175 | Tex Yellow Top Motor Housing |
| 21 | 220131 | Cable Clamp |
| 22 | 220230 | Mains Cable (U.K. Plug) |
| | 220512 | Mains Cable (C.E.E. Plug) |

| POS. | PART No | DESCRIPTION |
|------|---------|---|
| 22 | 220500 | Mains Cable (U.S.A. Plug) |
| | 220234 | Mains Cable (Swiss Plug) |
| | 220056 | Mains Cable (No Plug) |
| 23 | 220132 | Stress Relief |
| 24 | 220164 | Cable Strain Relief |
| 25 | 221151 | M4 x 5mm Long Pozzi Pan Machine Screw |
| 26 | 604151 | NVM 51 Diffuser |
| 27 | 206005 | Air Outlet Neck |
| 28 | 202003 | Top Motor Gasket |
| 29 | 219566 | M4 x 6mm Long Taplite Sems Screw } Not Applicable To 100V & |
| 30 | 220682 | Suppressor Assembly } 120V M/C Or 2 Core W/C |
| 31 | 220704 | 230V Overload Assembly C/W Item 33 |
| | 220259 | 120V Overload Assembly C/W Item 33 |
| 32 | 219566 | M4 x 6mm Long Taplite Sems Screw |
| 33 | 219244 | Overload Securing Clip Only |
| 34 | 320382 | 260mm Long White Motor Link Wire |
| 35 | 205050 | 230V Motor |
| | 205052 | 115V Motor |
| 36 | 202021 | Bottom Motor Gasket |
| 37 | 401038 | Red Bottom Motor Housing |
| | 401210 | Light Blue Bottom Motor Housing |
| | 401178 | Tex Green Bottom Motor Housing |
| | 401179 | Tex Yellow Bottom Motor Housing |
| 40 | 209050 | Filter Grid |
| 41 | 207102 | White Filter Assembly |
| 50 | 227004 | Bag Connector |
| 51 | 219076 | M5 Staytight Nylon Insert Nut |
| 52 | 206038 | Toggle |
| 53 | 219330 | M5 x 12mm Long Countersunk Screw |
| 54 | 300069 | Container - Red |
| | 300070 | Container - Blue |
| | 300071 | Container - Green |
| | 300072 | Container - Yellow |
| | 301051 | Container - Black |
| | 301050 | Container - Brown |
| 55 | 204059 | 2" Castor |