

Numatic
INTERNATIONAL

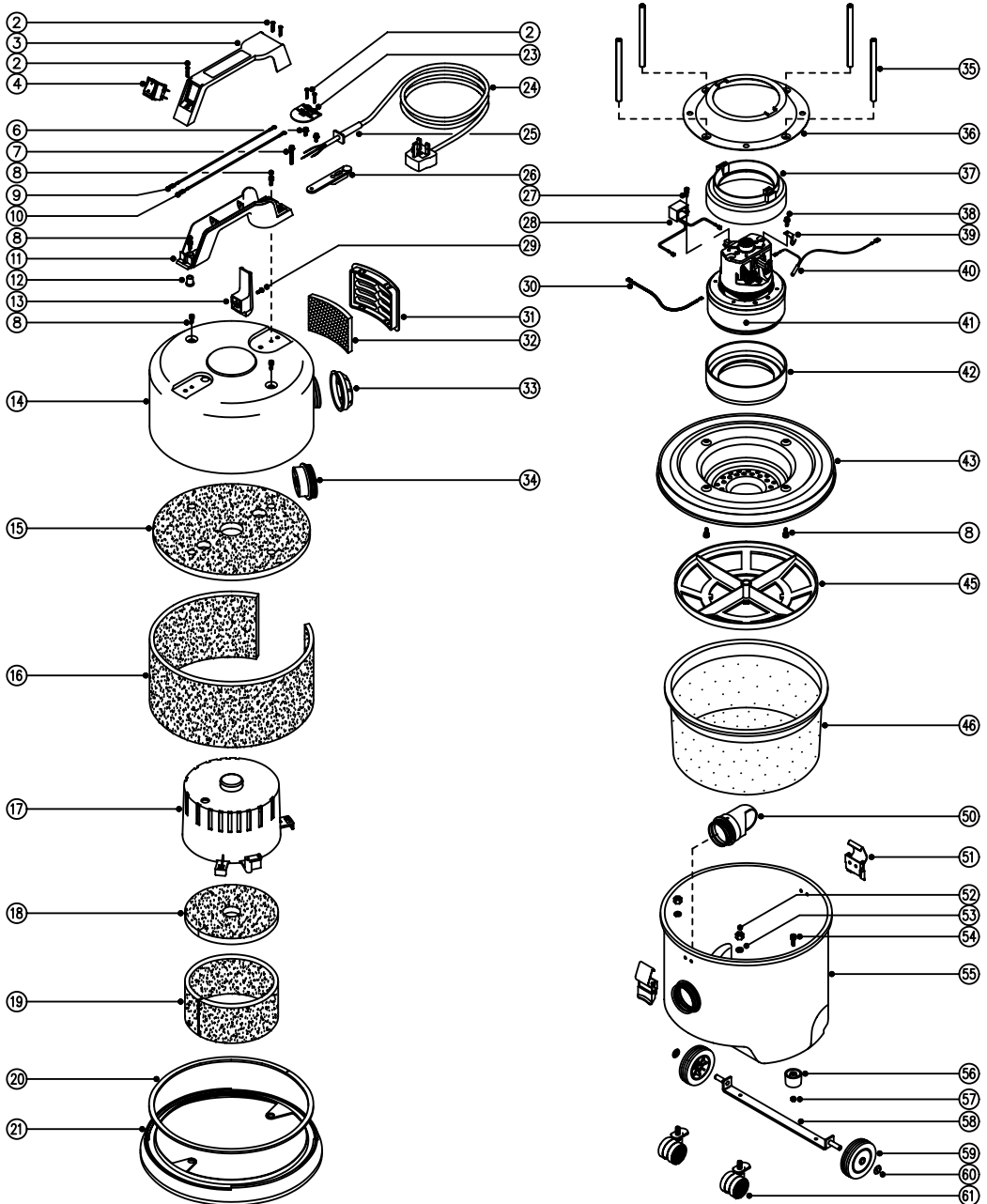


Spare Parts

Model No. NVQ250/300 & NVQ250B/300B (3 WIRE)

Numatic, International, Chard, Somerset, TA20 2GB.
Tel: 01460 68480 Fax: 01460 68560
Sales - Tel: 01460 68600 Fax: 01460 68458

231451
DRAWING:EXP237 ISS:06
22/12/98



MODEL No. NVQ250/300 & NVQ250B/300B (3 WIRE)

SUB ASSEMBLIES

POWER HEADS - COMPLETE

ITEMS 2 TO 43
Part Numbers Available Upon Request

FILTERS - COMPLETE

ITEMS 45 TO 46
Part Numbers Available Upon Request

CONTAINERS - COMPLETE

ITEMS 50 TO 61
Part Numbers Available Upon Request

SPARE PARTS

POS.	PART No	DESCRIPTION
1		
2	219107	No6 x 5/8" Long Plastite Screw
3	206213	Handle Cover
4	220286	Rocker Switch
5		
6	219090	M4 x 8mm Long Sems Screw
7		
8	219047	M5 x 10mm Long Sems Screw
9	320003	Brown Link Wire } For 120V Machines
10	320183	Blue Link Wire } Use 2 x Item 9
11	206187	Handle Body Moulding
12	220061	Cable Bush
13	206006	Cable Hook
14	401195	Red Head Top (No Logo) (NVQ250/300)
	401095	Blue Head Top (No Logo) (NVQ250/300)
	401259	Green Head Top (No Logo) (NVQ250/300)
	401257	Yellow Head Top (No Logo) (NVQ250/300)
	401195NU	Red Head Top (Black Numatic Logo) (NVQ250/300)
	401095NU	Blue Head Top (Black Numatic Logo) (NVQ250/300)
	401259NU	Green Head Top (Black Numatic Logo) (NVQ250/300)
	401257NU	Yellow Head Top (Black Numatic Logo) (NVQ250/300)
	401702	Red Head Top (No Logo) (NVQ250B/300B)
	401706	Blue Head Top (No Logo) (NVQ250B/300B)
	401708	Green Head Top (No Logo) (NVQ250B/300B)
	401214	Yellow Head Top (No Logo) (NVQ250B/300B)
	401702NU	Red Head Top (Black Numatic Logo) (NVQ250B/300B)
	401706NU	Blue Head Top (Black Numatic Logo) (NVQ250B/300B)
	401708NU	Green Head Top (Black Numatic Logo) (NVQ250B/300B)
	401214NU	Yellow Head Top (Black Numatic Logo) (NVQ250B/300B)
15	203005	Top Felt
16	203001	Side Felt (NVQ250B/300B)
	203009	Side Felt (NVQ250/300)
17	229149	Noise Reduction Pod
18	203007	Felt Disc
19	203008	Side Felt Insulation
20	212052	Inseal (920mm Long)
21	202006	Buffer Ring
22		
23	220131	Cable Clamp
24	220231	Mains Cable (U.K. Plug)
	220252	Mains Cable (C.E.E. Plug)
	220506	Mains Cable (U.S.A. Plug)

POS.	PART No	DESCRIPTION
24..	220223	Mains Cable (Swiss Plug)
	299039	Mains Cable (Australian Plug)
	220466	Mains Cable (15A Plug)
	220058	Mains Cable (No Plug)
25	220132	Stress Relief
26	220164	Cable Strain Relief
	303281	Cable Strain Relief (100 & 120V Machine)
27	219566	M4 x 6mm Long Taplite Sems Screw } Not Applicable To
28	220682	Suppressor Assembly } 100V Machine
29	221151	M4 x 5mm Long Pozzi Pan Machine Screw
30	320382	260mm Long White Link Wire
31	225064	Outlet Grill (NVQ250/300)
32	206260	Air Diffuser Pad (NVQ250/300)
33	604151	NVM 51 Diffuser (NVQ250B/300B)
34	206005	Air Outlet Neck (NVQ250B/300B)
35	208009	102.5mm Long Aluminium Spacer
36	401196	Red Top Motor Housing
	401233	Blue Top Motor Housing
	401262	Green Top Motor Housing
	401260	Yellow Top Motor Housing
37	202066	Top Motor Gasket
38	219566	M4 x 6mm Long Taplite Sems Screw
39	219244	Overload Securing Clip Only
40	220704	230V Overload Assembly C/W Item 39
	220259	120V Overload Assembly C/W Item 39
	320382	100V M/C=260mm Long White Link Wire
41	205032	230V Motor
	205034	120V Motor
	205035	100V Motor
42	202065	Bottom Motor Gasket
43	401197	Red Bottom Motor Housing
	401234	Blue Bottom Motor Housing
	401263	Green Bottom Motor Housing
	401261	Yellow Bottom Motor Housing
45	209050	Filter Grid
46	207102	White Filter Assembly
50	206202	Trappit Connector Assembly
51	206038	Toggle
52	219079	M8 Nut
53	219019	M8 Single Coil Spring Washer
54	219045	M5 x 16mm Long Sems Screw
55	400700	Red Container (NVQ250/250B)
	400702	Blue Container (NVQ250/250B)
	400704	Green Container (NVQ250/250B)
	400724	Yellow Container (NVQ250/250B)
	400725	Red Container (NVQ300/300B)
	400726	Blue Container (NVQ300/300B)
	400728	Green Container (NVQ300/300B)
	400086	Yellow Container (NVQ300/300B)
56	206033	Plastic Foot
57	219072	M5 Nut
58	206008	Chassis Axle
59	204008	Black Wheel
60	204020	8mm Chrome Hub Cap
61	204056	40mm Black Castor & Stem