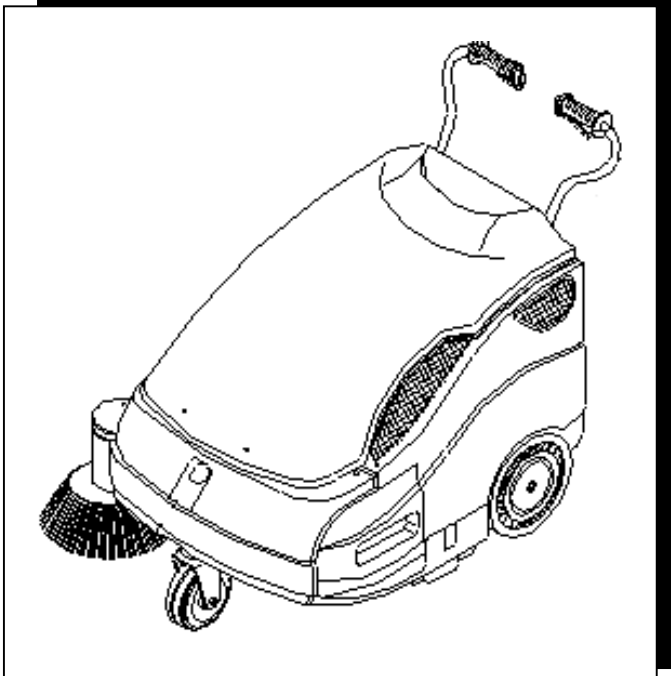


## **WALK BEHIND SWEEPER**



Operating Instructions (ENG)

MODELS: RWB36



---

*Read instructions before operating the machine.*



# **MACHINE DATA LOG/OVERVIEW**

**MODEL** \_\_\_\_\_

**DATE OF PURCHASE** \_\_\_\_\_

**SERIAL NUMBER** \_\_\_\_\_

**SALES REPRESENTATIVE #** \_\_\_\_\_

## **YOUR DEALER**

**Name:** \_\_\_\_\_

**Address:** \_\_\_\_\_

**Phone Number:** \_\_\_\_\_

# TABLE OF CONTENTS

<i>Machine Data Log/Overview</i> .....	2
<i>Table of Contents</i> .....	3

## HOW TO USE THIS MANUAL

<i>How to use this Manual</i> .....	1-1
-------------------------------------	-----

## SAFETY

<i>Safety Instructions</i> .....	2-1
<i>Hazard Intensity Level</i> .....	2-2
<i>Security Warning</i> .....	2-3

## OPERATIONS

<i>Unpacking the machine</i> .....	3-1
<i>Preparing for Operation</i> .....	3-1
<i>Controls</i> .....	3-2
<i>Machine Operation</i> .....	3-2
<i>Starting Machine</i> .....	3-2
<i>Tips for Operation</i> .....	3-2
<i>Cleaning Waste Bins</i> .....	3-2

## MAINTENANCE

<i>Batteries</i> .....	4-1
<i>Battery Maintenance</i> .....	4-1
<i>Battery Recharge</i> .....	4-1
<i>Filter Maintenance</i> .....	4-1
<i>Cleaning Filter</i> .....	4-1
<i>Replacing Filter</i> .....	4-1
<i>Brush Maintenance</i> .....	4-2
<i>Replacing/Adjusting Side Brush</i> .....	4-2
<i>Replacing/Adjusting Main Brush</i> .....	4-2
<i>Belt Maintenance</i> .....	4-2
<i>Replace Main Brush Belt</i> .....	4-2
<i>Replace Side Brush Belt</i> .....	4-3
<i>Replace Drive Belt</i> .....	4-3
<i>Flap Maintenance</i> .....	4-3
<i>Replace Outer Side Flap</i> .....	4-3
<i>Replace Inner Side Flap</i> .....	4-3
<i>Replace Center Flap</i> .....	4-3
<i>Cable Maintenance</i> .....	4-4
<i>Replace Traction Cable</i> .....	4-4
<i>Replace Side Brush Lifting Cable</i> .....	4-4
<i>Motor Fan Maintenance</i> .....	4-4
<i>Service Schedule</i> .....	4-5
<i>Machine Troubleshooting</i> .....	4-5
<i>Scrapping the Machine</i> .....	4-5

## GROUP PARTS LIST

<i>Frame/Body Group</i> .....	5-1
<i>Brush/Belt Group</i> .....	5-3
<i>Motor/Drive Group</i> .....	5-7
<i>Battery/Filter Group</i> .....	5-11
<i>Brake Group</i> .....	5-13
<i>EC Declaration of Conformity</i> .....	5-15
<i>Warranty</i> .....	5-16

# HOW TO USE THIS MANUAL

This manual contains the following sections:

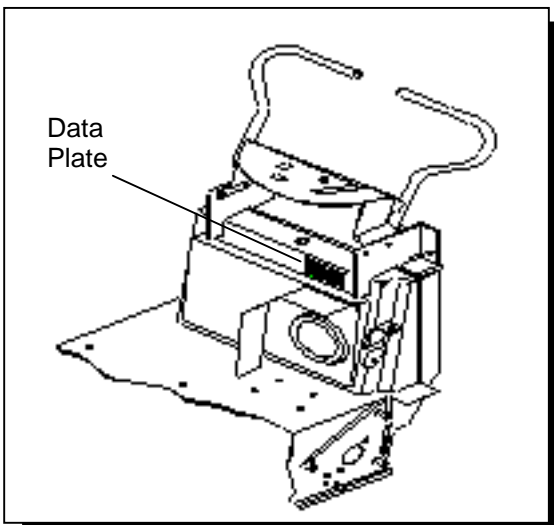
- HOW TO USE THIS MANUAL
- SAFETY
- OPERATIONS
- MAINTENANCE
- PARTS LIST

The HOW TO USE THIS MANUAL section will tell you how to find important information for ordering correct repair parts.

Parts may be ordered from authorized dealers. When placing an order for parts, the machine model and machine serial number are important. Refer to the MACHINE DATA log which is filled out during the installation of your machine. The MACHINE DATA log is located on the inside of the front cover of this manual.

MODEL _____
DATE OF PURCHASE _____
SERIAL NUMBER _____
SALES REPRESENTATIVE # _____

Always ensure that the machine is provided with a nameplate giving the **Serial Number** and **CE marking** in the position shown. If missing, please contact your dealer immediately.



The SAFETY section contains important information regarding hazard or unsafe practices of the machine. Levels of hazards is identified that could result in product or personal injury, or severe injury resulting in death.

The OPERATIONS section is to familiarize the operator with the operation and function of the machine.

The MAINTENANCE section contains preventive maintenance to keep the machine and its components in good working condition. They are listed in this general order:

- Batteries
- Brushes
- Belts
- Service Schedule
- Machine Troubleshooting

The PARTS LIST section contains assembled parts illustrations and corresponding parts list. The parts lists include a number of columns of information:

- **REF** – column refers to the reference number on the parts illustration.
- **PART NO.** – column lists the part number for the part.
- **QTY** – column lists the quantity of the part used in that area of the machine.
- **DESCRIPTION** – column is a brief description of the part.
- **SERIAL NO. FROM** – column indicates the first machine the part number is applicable to. When the machine design has changed, this column will indicate serial number of applicable machine. The main illustration shows the most current design of the machine. The boxed illustrations show older designs. If column has an asterisk (\*), call manufacturer for serial number.
- **NOTES** – column for information not noted by the other columns.

*NOTE: If a service or option kit is installed on your machine, be sure to keep the KIT INSTRUCTIONS which came with the kit. It contains replacement parts numbers needed for ordering future parts.*

*NOTE: The 98# on the lower left corner of the front cover is the part number for this manual.*

# IMPORTANT SAFETY INSTRUCTIONS

When using a battery powered appliance, basic precaution must always be followed, including the following:

READ ALL INSTRUCTIONS BEFORE USING THIS MACHINE.



## **WARNING:**

To reduce the risk of fire, electric shock, or injury:

**Use only** indoors. Do not use outdoors or expose to rain.

**Use only** as described in this manual. Use only manufacturer's recommended components and attachments.

If the machine is **not working properly**, has been dropped, damaged, left outdoors, or dropped into water, return it to an authorized service center.

**Do not** operate the machine with any openings blocked. Keep openings free of debris that may reduce airflow. This machine is **not** suitable for picking up hazardous dust.

**Machine can cause a fire** when operating near flammable vapors or materials. Do not operate this machine near flammable fluids, dust or vapors.

**This machine is suitable for commercial use, for example in hotels, schools, hospitals, factories, shops and offices for more than normal housekeeping purposes.**

Maintenance and repairs **must be done** by qualified personnel.

**Disconnect** battery before cleaning or servicing.

Before the machine is discarded, the batteries **must be removed** and properly disposed of.

**During operation**, attention shall be paid to other persons, especially children.

**Before use** all covers and doors shall be put in the positions specified in the instructions.

**When leaving unattended**, secure against unintentional movement.

**The machine shall only** be operated by instructed and authorized persons.

**When leaving unattended**, switch off or lock the main power switch to prevent unauthorized use.

**This appliance has been designed** for use with the brushes specified by the manufacturer. The fitting of other brushes may affect its safety.

**Do not** use on surfaces having a gradient exceeding 2% unless the optional parking brake is installed on the machine. **Do not** leave unattended on such surface.

**Do not** use the machine to soak up liquid, toxic substances, or bio-hazardous materials.

**Do not** use a jet of water in order to wash the machine.

**Do not** use the machine to sweep up cables, straps, wires, or similar materials.

## SAVE THESE INSTRUCTIONS

## **HAZARD INTENSITY LEVEL**

The following symbols are used throughout this guide as indicated in their descriptions:

### **HAZARD INTENSITY LEVEL**

There are three levels of hazard intensity identified by signal words -**WARNING** and **CAUTION** and **FOR SAFETY**. The level of hazard intensity is determined by the following definitions:

#### **WARNING**

**WARNING** - Hazards or unsafe practices which COULD result in severe personal injury or death.

#### **CAUTION**

**CAUTION** - Hazards or unsafe practices which could result in minor personal injury or product or property damage.

#### **FOR SAFETY: To identify actions which must be followed for safe operation or equipment.**

Report machine damage or faulty operation immediately. Do not use the machine if it is not in proper operating condition. Following is information that signals some potentially dangerous conditions to the operator or the equipment. Read this information carefully. Know when these conditions can exist. Locate all safety devices on the machine. Please take the necessary steps to train the machine operating personnel.

#### **FOR SAFETY**

**DO NOT OPERATE MACHINE:**

Unless Trained and Authorized.

Unless Operation Guide is Read and understood.

In Flammable or Explosive areas.

In areas with possible falling objects.

#### **WHEN SERVICING MACHINE:**

Avoid moving parts. Do not wear loose clothing; jackets, shirts, or sleeves when working on the machine. Use manufacturer approved replacement parts.

#### **WARNING**

Batteries emit hydrogen gas. Explosion or fire can result. Keep sparks and open flame away. Keep solution tank in raised position when charging. Keep sparks and flames away from the batteries. Do not smoke around batteries.

#### **WARNING**

Disconnect batteries before working on machine. Only qualified personnel should work inside machine. Always wear eye protection and protective clothing when working on or near batteries. Avoid skin contact with the acid contained in the batteries.

#### **WARNING**

Never allow metal to lie across battery tops.

### **IMPORTANT NOTE**

#### **Precautions to be taken before attempting to start machine:**

To facilitate transport, the side brush, the handlebar and the upper casing have not been assembled in their actual work position. Therefore before using the machine, assemble them as shown in this manual.

#### **IMPORTANT:**

The Manufacturer cannot and will not be held responsible for damage in the event the machine is used for purposes other than those it was designed for. The machine **must never be** tampered with for any reason whatsoever; In this event, the manufacturer will void all warranties and will accept **NO** responsibility for improper use or damage to the machine.

The machine, composed of a brush and a suction system, is to be used **EXCLUSIVELY** to clean **DRY** surfaces. Any other use could cause damage to people and/or property and is therefore **PROHIBITED**.

#### **FOREWARD:**

The purpose of this manual is to inform the operator of the basic rules, safety rules and criteria which must be observed when using, adjusting and maintaining the machine. The machine has been developed and manufactured to ensure an excellent performance and the utmost comfort and ease of operation in a variety of working conditions. Before delivery, the machine has been checked at our factory and by our dealer to make sure it is handed over to you in perfect working order. To maintain the machine in this condition and ensure problem free operation, it is essential to follow the routine maintenance instructions given in this manual.

# OPERATIONS

## UNPACKING THE MACHINE

Unpack the machine with the utmost care; avoid carrying out any operation that could damage your unit.

Once it has been unpacked, check for damage of any visible component. If you notice damage, DO NOT operate your machine and contact your dealer immediately.

For packaging and transport purposes, some parts and accessories are supplied disconnected from the machine. To assemble them, carefully follow the instructions given in following sections.

Contents of package:

- Machine
- Side Brush
- Manual
- Ignition keys (set of 2)
- Declaration of Conformity
- Warranty Registration

**NOTE:** In the case one of the above mentioned items is missing, please inform your dealer immediately for replacement.

**NOTE:** For security reasons during the transport, the ignition keys are attached to the handle.

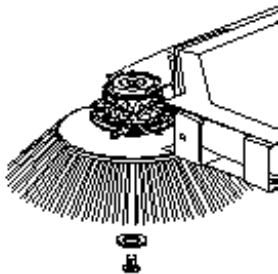
### **! CAUTION**

Take care to keep packaging materials (bags, cartons, pallets, hooks, etc) **out of reach of children.**

## PREPARING THE MACHINE FOR OPERATION

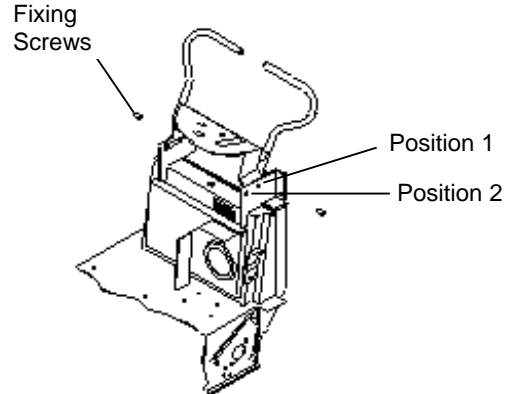
### Mounting the Side Brush:

1. Switch the brush lift lever to **OFF**.
2. Remove the screw from the side brush drive shaft.
3. Fit the brush on the shaft.
4. Screw on the screw and washer.



### Mounting the Handlebar:

1. Loosen the handlebar fixing screws.
2. Put the handlebar in most comfortable work position.
3. Tighten the handlebar fixing screws.



### Mounting the Bonnet:

Prepare the battery motor before proceeding to the assembly of the cover. Once you have done this:

1. Loosen the bonnet fixing handwheels.
2. Position the bonnet on machine.
3. Tighten the handwheels.

## PREPARING THE BATTERY

The battery must be prepared before it is mounted on the machine. This simple precaution will prevent the machine from being damaged by the electrolytic liquid of the battery.

### **! WARNING**

Always prepare the battery in a sufficiently ventilated environment. **DO NOT** smoke or use flame during this operation.

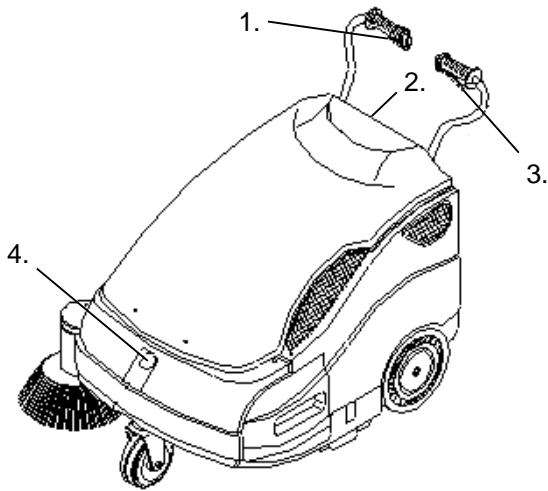
To prepare the battery:

1. Remove the caps from the battery cells.
2. Fill with Distilled water.
3. Plug the battery into the on-board charger of machine.

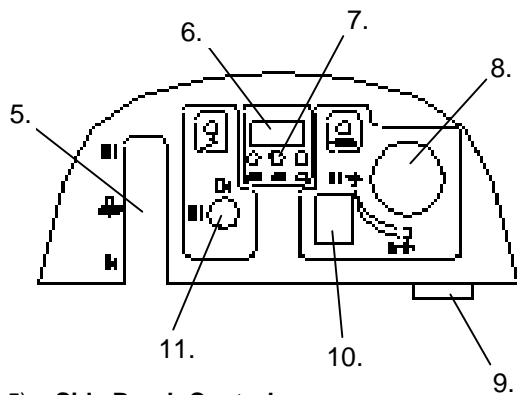
Wait for the charge indicator light to be GREEN. This indicates a full charge.



## CONTROLS



- 1) **Traction Lever:** by pressing this lever, the machine will start moving forwards.
- 2) **Filter Shaker Lever:** This lever operates the filter shaker to clean the filter.
- 3) **Flap Raise Lever**
- 4) **Front Hopper Unlocking Lever**



- 5) **Side Brush Control Lever:** switch the lever to ON and the side brush will move to work position and start spinning. To stop the brush, switch the lever to OFF.
- 6) **Timer:** Displays the total amount of work hours of the machine.
- 7) **Charge Indicator Light:** Light indicates the state of battery during operation.
- 8) **Air Suction Inlet Knob:** (located under the cover) this opens or closes the suction valve.
- 9) **Battery Charge Connector:** Connector allows the battery to be charged.
- 10) **Suction Switch**
- 11) **Key Switch:** Starts and stops all of machine functions.

## STARTING THE MACHINE

### **CAUTION**

The machine must be used by authorized personnel only. **DO NOT** leave the machine **UNATTENDED** when it is running. Turn off power and remove the key before leaving the machine.

To start the machine carry out the following steps:

1. Make sure the side brush is **OFF**.
2. Turn the power switch to the **ON** position. Wait 10 seconds before moving the machine.
3. Check the battery indicator to assess whether the battery is fully charged or not. If you do not have enough battery power to operate the machine, turn power of to machine and proceed to recharging the battery. (see section on re-charging battery)
4. Pull the traction lever to start cleaning.  
**NOTE:** if you wish to engage the side brush at this time, make sure to switch to the **ON** position for the side brush.

**NOTE:** This unit has an automatic device built in to prevent usage of the machine beyond a certain battery charge limit. The machine will not function until the battery has been fully charged.

## TIPS FOR OPERATION

After you have become acquainted with the start up procedure, the following are tips to ensure the best results from your sweeper. These tips will also help reduce damage to your machine.

- DO NOT use the machine to clean up wires, ropes or straps.
- DO NOT use the machine to soak up or clean up liquids of any kind.
- When using the machine on light but bulky material (sheets of paper, leaves, etc.), raise the front part of the machine by pressing down the handlebar so that the machine may tackle the debris easier.
- Operate the filter shaker at the end of your work session. (see the panel filter section)
- Make sure the center brush is correctly adjusted. (see adjusting the center brush)

## **OPERATIONS**

### **CLEANING THE WASTE BINS**

Before cleaning of waster bins, make sure all pertinent parts are off the machine.



*Wastes must be disposed of strictly in accordance to local, state or governing law in your area.*

#### **Front Bin**

1. Lift and turn the two bin locks.
2. Grasp the handle/s and remove the bin by pulling it upwards.
3. Empty the bin.
4. Put the bin back in the machine from the top
5. Turn and lower the two bin locks.

#### **Rear Bin**

1. Lift and turn the two bin blocks.
2. Grasp the handle and remove the bin.
3. Empty the bin.
4. Put the bin back in the machine.
5. Turn and press the two locks.

## BATTERY MAINTENANCE

### **⚠ WARNING**

The battery should be serviced in a properly ventilated area. During maintenance, **DO NOT** expose the battery to naked flame.

The battery must be kept clean and dry. Keep the terminals and poles clean.

Every 10 hours, remove the caps and check the electrolyte level. If necessary top off levels with distilled water.

The battery has a 3 hour working life. If you notice that the battery life starts to get much shorter check the following:

- Brushes are not obstructed.
- Battery is completely charged.

After checking these two items the battery life is still decreasing, replace the battery with a new one.

## BATTERY RECHARGE

The life of the battery will depend on the routine maintenance and discharge level.

**DO NOT** allow the battery to drop below the limit signaled by indicator lights. This will decrease the life of the battery.

If you go to the maximum discharge level, the machine will automatically shut off and you will need to re-charge to full capacity before the machine will operate.

When the machine is **OFF**:

1. Remove the caps from the battery cells.
2. Top off levels with distilled water.
3. Plug the battery connector into the charger connector.

### Charge indicator lights

**GREEN** light: The battery is fully charged.

**YELLOW** light: The battery is running out; re-charge as soon as possible.

**RED** light: The battery has run out. **DO NOT** operate the machine.

Every 200 hours of work, check the state of motor carbon brushes and replace them if worn.

Always try to replace them before they reach 1000 hours of work.

## FILTER MAINTENANCE

The filter is one of the machine main components. It is essential for the best results from your machine. If you notice that dust forms when the machine is at work, check the filter.

### Cleaning the Filter:

1. Press and release the lever for the filter shaker.  
**NOTE:** The lever operates a rod that will unclog the filter.
2. Repeat this step 5 or 6 times.

**NOTE:** If you are using the machine in a particularly dusty environment (i.e. cement factory, sawmills, marble processing factory, etc.), it is wise to use the filter shaker more frequently.

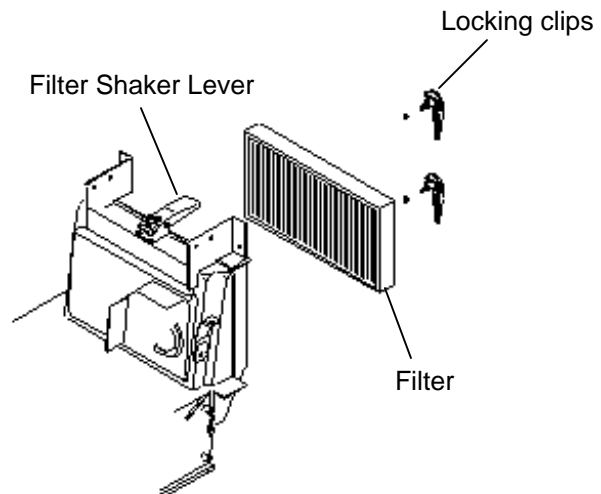
### Replacing the filter:

1. Remove the rear bin.
2. Remove the locking clips.
3. While holding the filter shaker rod, remove the filter.
4. Replace in reverse order.

**NOTE:** The filter features an arrow that shows you the direction in which the filter should be fitted.

The filter must be replaced after every 200 hours of work.

After the filter has been remounted, make sure the gasket and filter are dust tight.

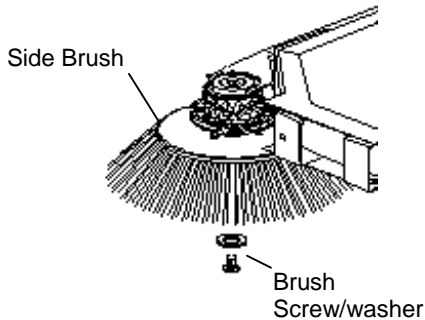


# MAINTENANCE

## REPLACING AND ADJUSTING THE SIDE BRUSH

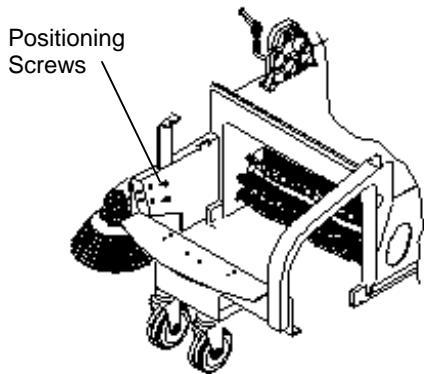
### Replacing:

1. Lift the front part of machine.
2. Loosen the brush screw/washer; remove and retain.
3. Remove the worn brush and replace with new.
4. Secure in place with the brush screw/washer.



### Adjusting:

1. Loosen the positioning screws.
2. Use the slots to move the brush to the desired position.
3. Tighten the screws when the desired position is reached.



## REPLACING AND ADJUSTING THE MAIN BRUSH

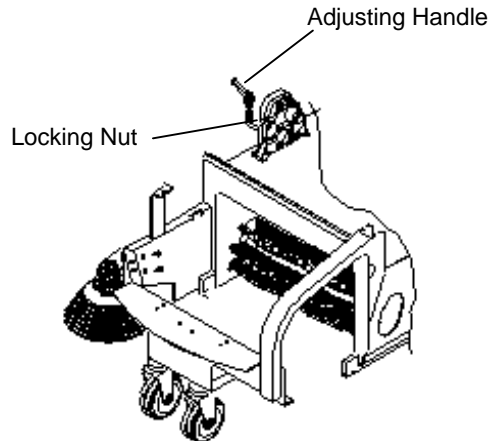
### Replacing:

1. Remove the front bin.
2. Loosen the four screws holding the brush in place; Remove and retain.
3. Remove the worn brush.
4. Replace with the new brush. **NOTE:** Pay close attention to the brush direction. The brush should be installed so the dirt is directed towards the center of machine.
5. Place the four screws and tighten.

### Adjusting:

1. Open the top bonnet. **NOTE:** By pulling up the handle, the brush will turn idle. This will allow you to position the brush in a place where it will prevent the top bonnet from closing.
2. Loosen the lock nut.
3. Turn the adjusting handle in the direction required.

**NOTE:** Clockwise to **increase** pressure  
Counter Clockwise to **decrease** pressure.



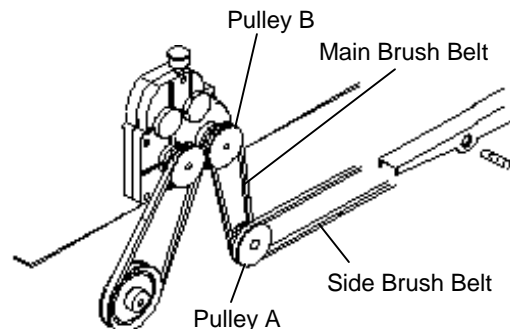
## REPLACING THE BELTS

To prepare the machine for belt replacement, carry out the following operations:

1. Remove the top bonnet and front bin.
2. Remove the right wheel.
3. Remove the bumper and right side guard.

### Main Brush Belt:

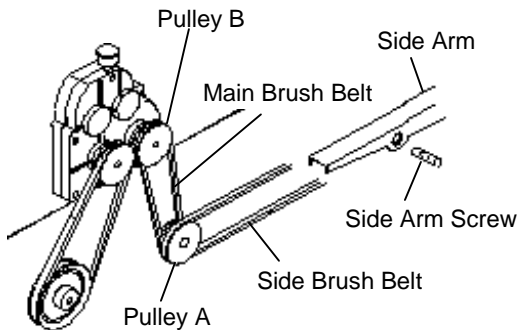
1. Remove side brush belt from groove of pulley A. Let hang loose.
2. Remove Main brush belt from grooves of pulley A and B. Discard.
3. Place new belt in grooves of Pulley A and B in reverse order.
4. Put loose end of side brush belt back in groove of pulley A.



## REPLACING THE BELTS (Cont.)

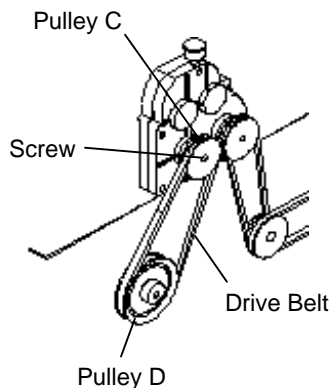
### Side Brush Belt:

1. Remove side brush belt from grooves of pulley A.
2. Remove and retain side arm screw.
3. Let the hooks of the side arm come out of the idle tooth ring.
4. Remove the side brush belt from the side arm.
5. Place a new belt in reverse order.
6. Tighten the side arm screw.
7. Place the new belt in grooves of pulley A.



### Drive Belt:

1. Remove the screw holding pulley C.
2. Take the pulley out of the reduction unit shaft. **NOTE:** Be careful to not loose the key.
3. Take belt off pulley C and D.
4. Discard belt and replace with new in reverse order.



## REPLACING THE FLAPS

### Outer Side Flaps:

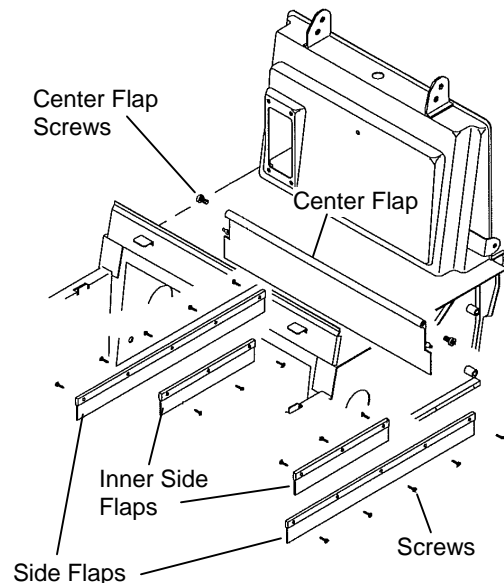
1. Remove the rear wheels and relevant side guards.
2. Remove and retain the screws that secure the flaps to frame.
3. Replace worn flaps with new flaps in reverse order.

### Inner Side Flaps:

1. Lift the front part of the machine.
2. Remove and retain the screws that secure the flaps to the frame.
3. Replace worn flaps with new flaps in reverse order.

### Center Flaps:

1. Remove the rear wheels and the relevant side guards.
2. Remove the rear door.
3. Loosen the two flap screws, located on the sides of the frame.
4. Grasp flap and pull it forward.
5. Replace the worn flap with a new one.
6. Push flap back so the reference points go into their respective reference holes.
7. Place the two screws back in sides of frame and tighten.
8. Replace the rear door, rear wheels and relevant side guards.



## **MAINTENANCE**

### **REPLACING THE TRACTION CABLE**

To **replace** the cable, proceed as follows:

1. Remove the upper bonnet of the machine.
2. Loosen the security dowel located on the cable fixing pin.
3. Pull the cable out of the fixing pin and remove the adjusting screw mounted on the handle.
4. Press the handle and pull the cable out of its sheath.

To **remount** the cable:

1. Fit one end of the cable into the adjustment screw of the handle (i.e. the end without the blocking ball)
2. Insert the cable into its sheath
3. Hook the cable through the turned adjustment screw secured to the machine frame and then through the fixing pin.
4. Tighten the security dowel.

The position of the cable is adjusted by acting on the two adjustment screws.

### **REPLACING THE SIDE BRUSH LIFTING CABLE**

To replace the side brush lifting cable, proceed as follows:

1. Remove the upper bonnet and the front bin of the machine.
2. Remove the front bumper, the right wheel and the right hand side guard.
3. Loosen the cable clamp.
4. Loosen the security dowel on the fixing pin.
5. Remove the handle from the support and open it up.
6. Pull the cable out of the two sheaths.

To remount the cable:

1. Put the cable inside the handle.
2. Close up the handle and fix it to the support.
3. Insert the cables into their sheaths.
4. Secure one end of the cables in places with the clamp and the other end with the fixing pin.

The position of the cable is adjusted by acting on the two adjustment screws.

### **REPLACING MOTOR FAN**

1. Remove the top bonnet.
2. Disconnect the battery cables and remove the battery from the machine.
3. Disconnect the power supply coders of the motor from the plug.
4. Remove the stop for the cable holder from the motor.
5. Remove and retain the four motor fixing screws.

6. Remove the bad motor and replace it by carrying out the above operations in reverse order.

**NOTE:** *Make sure the motor is mounted level with the fan. When reconnecting the battery be aware of the polarity configuration so you do not damage the machine.*

## CAUTION

All routine and special maintenance must be carried out by authorized personnel or service center. Always use manufactures spare parts.

## WARNING

Before performing any maintenance on machine, be sure power is OFF and batteries are disconnected.

### SERVICE SCHEDULE

Items to Check	On Delivery	Every 10 hours	Every 50 hours	Every 100 hours
Battery Liquid levels	X	X		
Belts for adjustment				X
Fasteners are tight			X	
Brushes for wear and tear			X	
Gaskets for wear and leakage		X		
All functions are working properly	X			X

### TROUBLESHOOTING

FAULT	Cause	Remedy
The Main Brush is not spinning	The belt is broken	Replace
	The motor has burnt out	Replace
	A wire is detached	Check; replace or re-connect
The Side Brush is not spinning	The belt has broken	Replace
The battery does not stay charged	The liquid levels are low	Check; Top off levels
	The terminal connection is loose	Re-connect terminals
Dust comes out of fan	The filter is damaged	Replace
	The filter is in the wrong position	Correct the position of filter
	The gaskets are worn or damaged	Replace
The brushes wear out too quickly	The brushes are too low	Adjust the brush
Dust forms during operation	The flaps are worn or damaged	Replace
	The filter is clogged	Clean the filter; Replace if damaged
The suction motor does not work	The motor has burnt out	Replace
	A wire is detached	Check; replace or re-connect
The machine does not come one when powered up	The battery terminals are disconnected	Check; re-connect
	The battery is discharged	Recharge battery to maximum level

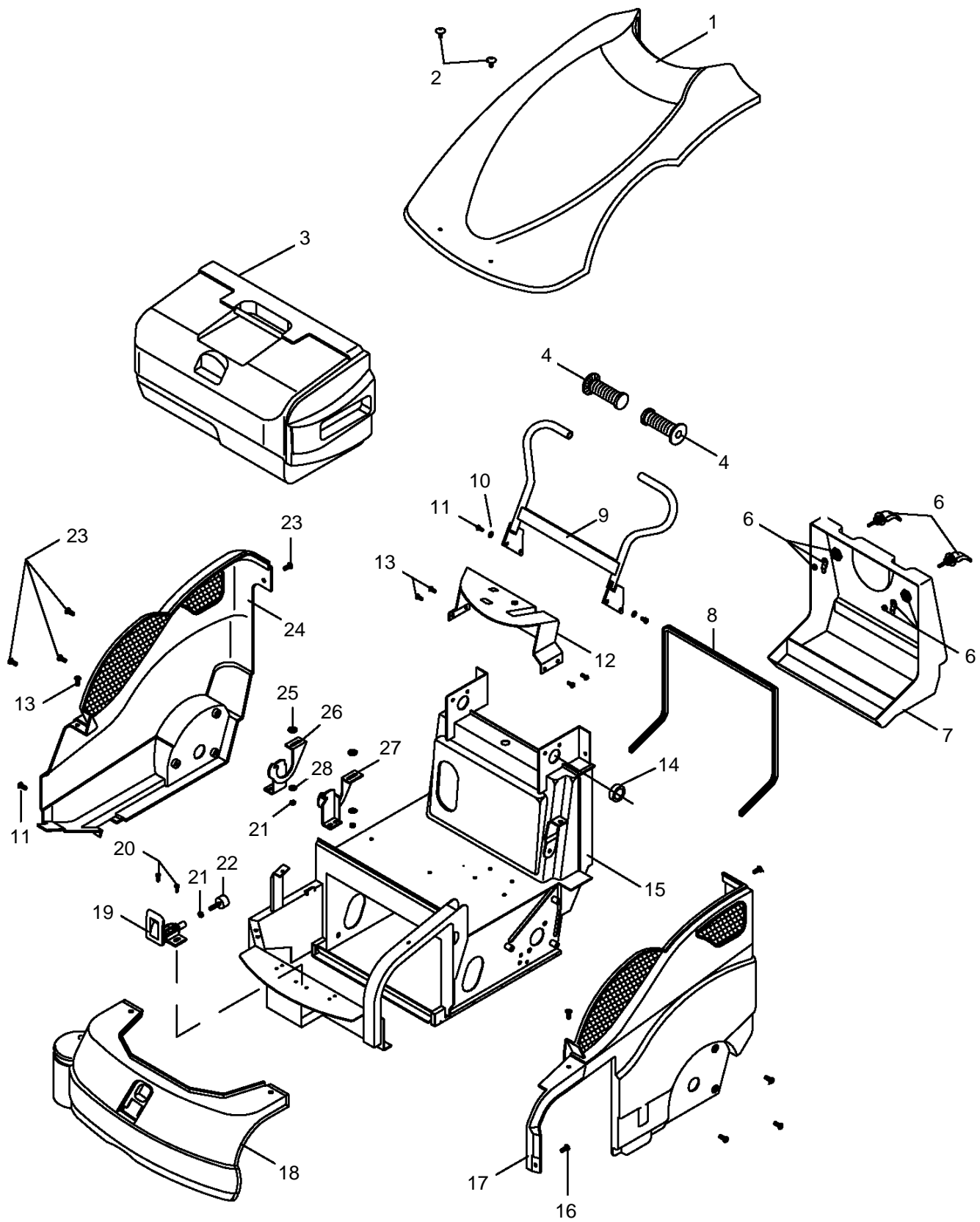
### SCRAPPING THE MACHINE

In the event the machine must be scrapped, please remember that batteries are **NOT** common waste material. They must be disposed of in accordance with relevant laws.

The machine is composed different parts. Dismantle it and prepare the wastes for disposal in accordance to their type or class.

**DO NOT USE THE SCRAP PIECES AS SPARE PARTS. KEEP SCRAPS OUT OF REACH OF CHILDREN.**

# FRAME/BODY GROUP

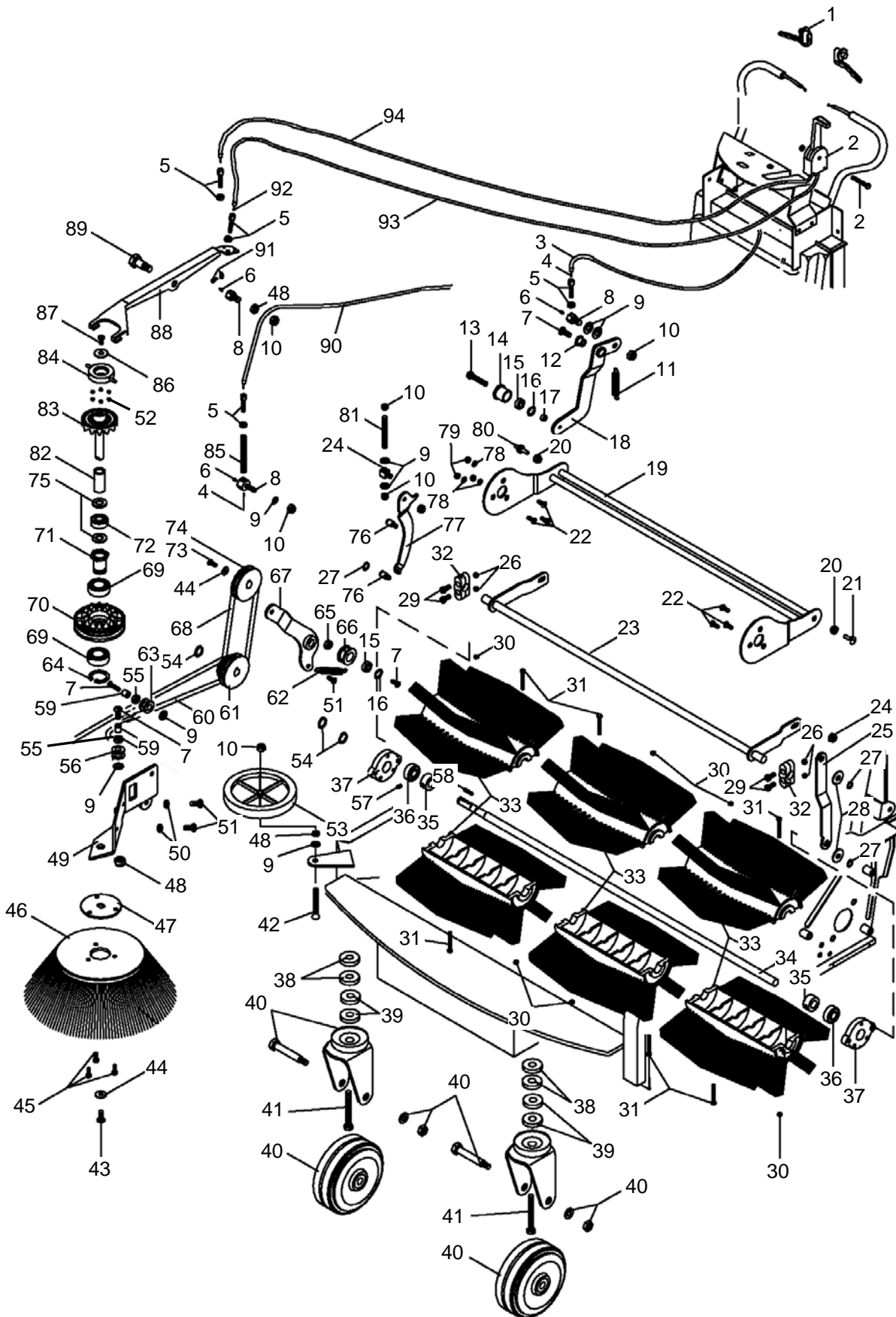




## FRAME/BODY GROUP

REF	PART NO.	QTY	DESCRIPTION	SERIAL NO. FROM	NOTES:
1	1500226	1	UPPER COVER, BLUE RWB36		
2	1500002	2	FIXING SCREW		
3	86309760	1	FRONT DRAWER		
4	1500213	2	RUBBER HAND GRIP		
5	50941	1	LABEL, WINDSOR LOGO		NOT SHOWN
6	1500214	2	HOPPER LOCK CLAMPS		
7	1500231	1	BACK DRAWER		
8	1500215	1	REAR HOPPER GASKET		
9	1500232	1	HANDGRIP		
10	1500015	2	WASHER 8 X 17		
11	1500014	3	SCREW 8 X 16		
12	1500230	1	DASHBOARD		
13	1500233	6	SCREW 6 X 16		
14	1500240	1	FAIRLEAD		
15	1500234	1	FRAME RWB36		
16	1500182	1	SCREW 3.5 X 9.5		
17	1500229	1	LEFT SIDE CASING		
18	1500235	1	GRAY FRONT CASING		
19	1500236	1	LEVER		
20	1500098	2	SCREW 6 X 10		
21	1500003	3	BLOCK NUT M8		
22	1500237	1	BUMPER		
23	1500017	8	SCREW 8 X 10		
24	1500228	1	RIGHT SIDE CASING		
25	1500009	2	BUSHING		
26	1500238	1	HINGE, RIGHT		
27	1500239	1	HINGE, LEFT		
28	1500025	2	BUSHING		
29	500693	2	LABEL, RADIUS		NOT SHOWN

# BRUSH/BELT GROUP



## BRUSH/BELT GROUP

REF	PART NO.	QTY	DESCRIPTION	SERIAL NO. FROM	NOTES:
1	1500242	2	TRACTION HANDLE		
2	1500030	1	SIDEBRUSH DRIVE LEVER		
3	1500035	1	DRIVE CABLE SHEATH		
4	1500036	2	DRIVE CABLE		
5	1500029	4	TURNED ADJUSTER DIA. 7		
6	1500037	3	DOWEL 5 X 6		
7	1500040	4	SCREW 8 X 25		
8	1500038	3	WIRE FIXING SCREW		
9	1500015	8	WASHER 8 X 17		
10	1500039	6	BLOCK NUT M8		
11	1500042	1	TRACTION SPRING		
12	1500041	1	BELT TIGHTENERS LEVER B		
13	1500043	1	SCR BELT TIGHTENER ROLLER		
14	1500044	1	BELT TIGHTENER ROLL H15		
15	1500045	1	BEARING 608-2RS		
16	1500046	1	INNER SNAP RING DIA. 22		
17	1500047	1	SPACER		
18	1500245	1	BELT TIGHTENER BRACKET		
19	1500246	1	ROCKER		
20	1500050	2	ROCKER BUSHING		
21	1500049	1	ROCKER PIN		
22	1500055	6	SCREW 6 X 20		
23	1500244	1	BRUSH ADJUSTING ARM		
24	1500251	1	MAIN BRUSH ADJUSTMENT BLOCK		
25	1500249	1	MAIN BROOM ADJUSTMENT BRACKET		
26	1500267	4	BLOCK NUT M6		
27	1500066	4	OUTER SNAP RING DIA. 12		
28	1500265	4	WASHER 12 X 24		
29	1500264	4	SCREW 6 X 25		
30	1500057	6	NUT M5		
31	1500056	6	SCREW 5 X 70		
32	1500263	2	SUPPORT		
33	1500212	1	MAIN BROOM, PPL40 16 ROW		
34	1500248	1	BRUSH SHAFT		
35	1500061	2	SPACER BRUSH SHAFT		
36	1500219	2	MAIN BROOM BEARING		
37	1500063	2	BEARING SPRT DIA. 80		
38	1500254	4	SPACER		
39	1500253	4	WASHER 12 X 48		
40	1500054	2	ROTARY SPRT WHEEL DIA 100 BLK		
41	1500053	2	SCREW 12 X 60		
42	1500261	1	SCREW 8 X 50		
43	1500031	1	SCREW 6X 16		
44	1500006	1	WASHER 6 X 24 X 2		
45	1500098	3	SCREW 6 X 10		
46	1500096	1	SIDE BRUSH		
47	1500095	1	SIDE BRUSH DRAGGING FLANGE		
48	1500003	2	BLOCK NUT M8		
49	1500094	1	SIDE BRUSH SUPPORT		
50	1500093	2	WASHER 8 X 24		
51	1500017	3	SCREW 8 X 10		
52	1500082	6	BALLS 11/32		
53	1500262	1	SIDE BUMPER		

## BRUSH/BELT GROUP

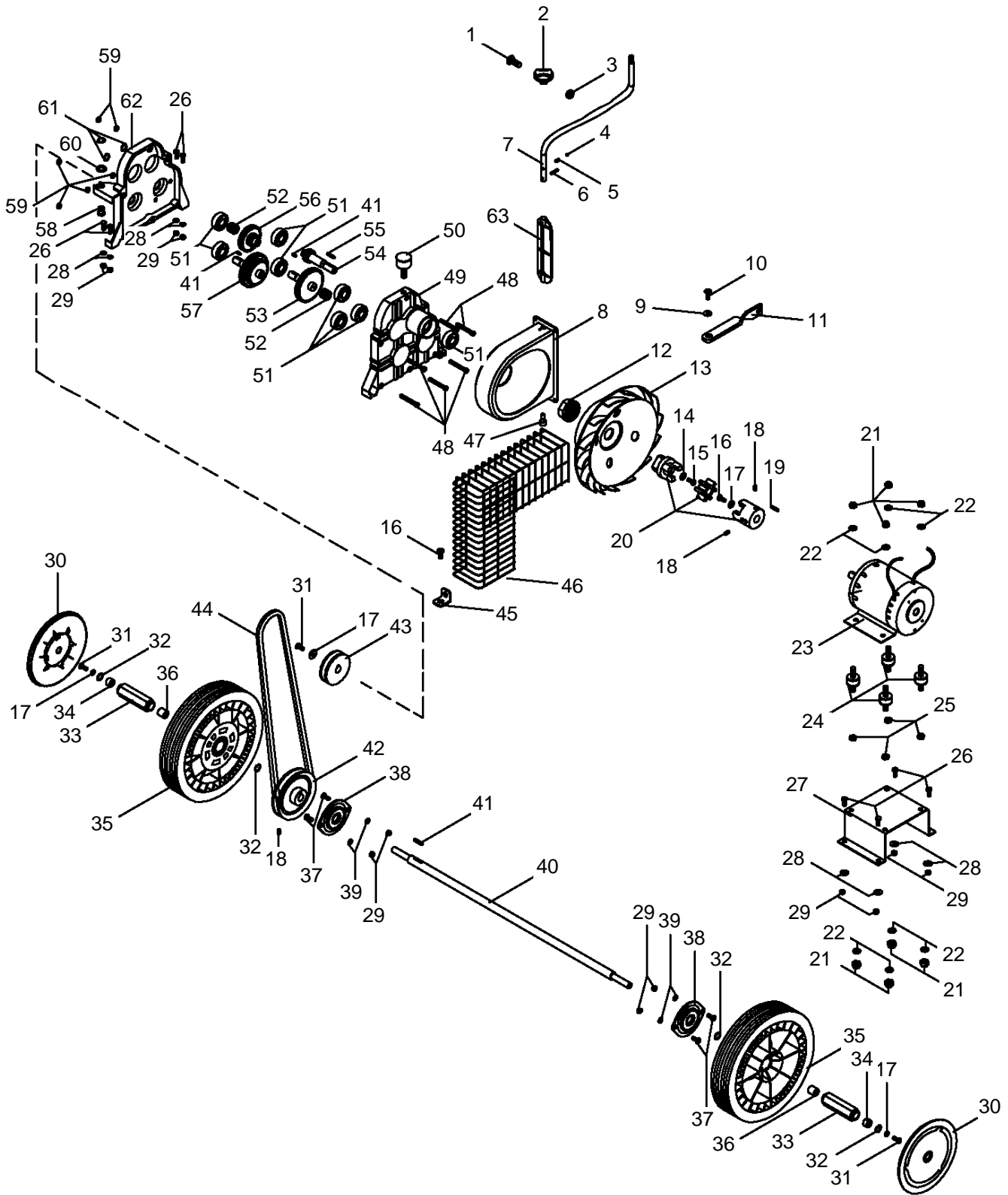
REF	PART NO.	QTY	DESCRIPTION	SERIAL NO. FROM	NOTES:
54	1500065	3	OUTER SNAP RING DIA. 15		
55	1500070	2	BEARING HK 1012		
56	1500091	1	PULLEY DIA. 27 X 15		
57	1500062	2	DOWEL 6 X 5		
58	1500060	1	KEY 5 X 5 X 15		
59	1500090	2	SPACER		
60	1500092	1	BELT DIA. 8 X 1000		
61	1500250	1	PULLEY		
62	1500260	1	TRACTION SPRING		
63	1500097	1	PULLEY DIA. 30 X 15		
64	1500088	1	OUTER SNAP RING DIA. 25		
65	1500257	1	SPACER DIA. 12 H7		
66	1500258	1	BELT TIGHTENER ROLL		
67	1500029	1	TURNED ADJUSTER DIA. 7		
68	1500218	1	MAIN BROOM BELT		
69	1500086	2	BEARING 6005 2RS		
70	1500087	1	IDLE TOOTH RING		
71	1500085	1	BUSHING FOR BEARING		
72	1500100	1	BEARING HK 1412		
73	1500116	1	SCREW 6 X 10		
74	1500256	1	PULLEY		
75	1500069	2	SIDE ARMS FELT WASHER		
76	1500067	4	BRUSH ADJUSTING FIXING PIVOT		
77	1500243	1	BRACKET		
78	1500032	3	WASHER 6 X 12		
79	1500052	3	CLOCK NUT M6		
80	1500252	1	PIN FOR ROCKER		
81	1500266	1	PIN FOR ROCKER		
82	1500071	1	SIDE BRUSH SHAFT SPACER		
83	1500083	1	TOOTHED RING, SIDE BRUSH TK		
84	1500081	1	SIDE BRUSH BEARING RINGS		
85	1500255	1	SPRING		
86	1500080	1	WASHER 8 X 32		
87	1500078	1	SCREW 8 X 22		
88	1500079	1	SIDE BRUSH LIFTING LEVER		
89	1500076	1	PIN 17 X 34		
90	1500216	1	LIFT FLAP CABLE SHEATH		
91	1500077	1	CLAMP DIA. 7		
92	1500075	1	SIDE BRUSH LIFTING CABLE		
93	1500074	1	SIDE BRUSHING SHEATHING		
94	1500027	1	SIDE BRUSH SHEATHING		

## BRUSH/BELT GROUP

REF	PART NO.	QTY	DESCRIPTION	SERIAL NO. FROM	NOTES:
54	1500065	3	OUTER SNAP RING DIA. 15		
55	1500070	2	BEARING HK 1012		
56	1500091	1	PULLEY DIA. 27 X 15		
57	1500062	2	DOWEL 6 X 5		
58	1500060	1	KEY 5 X 5 X 15		
59	1500090	2	SPACER		
60	1500092	1	BELT DIA. 8 X 1000		
61	1500250	1	PULLEY		
62	1500260	1	TRACTION SPRING		
63	1500097	1	PULLEY DIA. 30 X 15		
64	1500088	1	OUTER SNAP RING DIA. 25		
65	1500257	1	SPACER DIA. 12 H7		
66	1500258	1	BELT TIGHTENER ROLL		
67	1500029	1	TURNED ADJUSTER DIA. 7		
68	1500218	1	MAIN BROOM BELT		
69	1500086	2	BEARING 6005 2RS		
70	1500087	1	IDLE TOOTH RING		
71	1500085	1	BUSHING FOR BEARING		
72	1500100	1	BEARING HK 1412		
73	1500116	1	SCREW 6 X 10		
74	1500256	1	PULLEY		
75	1500069	2	SIDE ARMS FELT WASHER		
76	1500067	4	BRUSH ADJUSTING FIXING PIVOT		
77	1500243	1	BRACKET		
78	1500032	3	WASHER 6 X 12		
79	1500052	3	CLOCK NUT M6		
80	1500252	1	PIN FOR ROCKER		
81	1500266	1	PIN FOR ROCKER		
82	1500071	1	SIDE BRUSH SHAFT SPACER		
83	1500083	1	TOOTHED RING, SIDE BRUSH TK		
84	1500081	1	SIDE BRUSH BEARING RINGS		
85	1500255	1	SPRING		
86	1500080	1	WASHER 8 X 32		
87	1500078	1	SCREW 8 X 22		
88	1500079	1	SIDE BRUSH LIFTING LEVER		
89	1500076	1	PIN 17 X 34		
90	1500216	1	LIFT FLAP CABLE SHEATH		
91	1500077	1	CLAMP DIA. 7		
92	1500075	1	SIDE BRUSH LIFTING CABLE		
93	1500074	1	SIDE BRUSHING SHEATHING		
94	1500027	1	SIDE BRUSH SHEATHING		



# MOTOR/DRIVE GROUP



## MOTOR/DRIVE GROUP

REF	PART NO.	QTY	DESCRIPTION	SERIAL NO. FROM	NOTES:
1	1500268	1	SCREW 5X 20		
2	1500286	1	HANDLE FOR BUTTERFLY		
3	1500057	1	NUT, M5		
4	1500270	1	BALL DIA. 5		
5	TBD	1	SPRING FOR AIR CONVEYOR		
6	1500281	1	5 X 16 ELASTIC CATCH		
7	1500285	1	CABLE FOR BUTTERFLY		
8	1500284	1	AIR CONVEYOR		
9	1500093	1	WASHER 8 X 24		
10	1500017	1	SCREW 8 X 10		
11	1500301	1	FIXING BRACKET		
12	1500289	1	BUSHING DIA. 40 X 30		
13	1500290	1	PLASTIC FAN		
14	1500298	1	TRASCO JOINT BLOCKING FLANGE		
15	1500292	1	SCREW 6 X 16		
16	1500233	2	SCREW 6 X 16		
17	1500006	3	WASHER 6 X 24 X 2		
18	1500128	3	DOWEL 6 X 10		
19	1500293	1	KEY 5 X 5 X 30		
20	1500291	1	MOTOR COMPLETE JOINT		
21	1500039	8	BLOCK NUT M8		
22	1500015	12	WASHER 8 X 17		
23	1500220	1	MOTOR		
24	1500294	4	ANTIVIBRATIONS 30 X 20 M8 X 25		
25	1500003	4	BLOCK NUT M8		
26	1500141	8	SCREW 6 X 16		
27	1500295	1	MOTOR SUPPORT		
28	1500142	8	WASHER, 6 X 18		
29	1500022	6	NUT M6		
30	1500115	2	WHEELS COVER DIA. 200		
31	1500116	3	SCREW 6 X 10		
32	1500117	4	OUTER SNAP RING DIA. 28		
33	1500119	2	EXAGONAL BUSHING		
34	1500118	2	BEARING HFL 1426		
35	1500296	2	WHEEL, GREY		
36	1500120	2	BEARING HK 1412		
37	1500122	4	SCREW 6 X 10		
38	1500123	2	SUPPORT SBPFL 203		
39	1500032	4	WASHER 6 X 12		
40	1500125	1	DRIVE SHAFT		
41	1500060	2	KEY 5 X 5 X 15		
42	1500297	1	TRACTION PULLEY		
43	1500269	1	REDUCTION GEAR TRACTION PULLEY		
44	1500222	1	TRACTION DRIVE BELT		
45	1500300	1	FIXING BRACKET		
46	1500299	1	FAN PROTECTION GRILLE		
47	1500288	1	BUTTERFLY STOPPING SCREW		
48	1500280	6	SCREW 6 X 35		
49	1500272	1	REDUCTION GEAR BODY		
50	1500273	1	STAUFF GREASER		
51	1500064	8	BEARING 6202 2RS		
52	1500274	6	SHIM 15 X 22 X .05		
53	1500277	1	STRAIGHT TOOTHED GEAR		

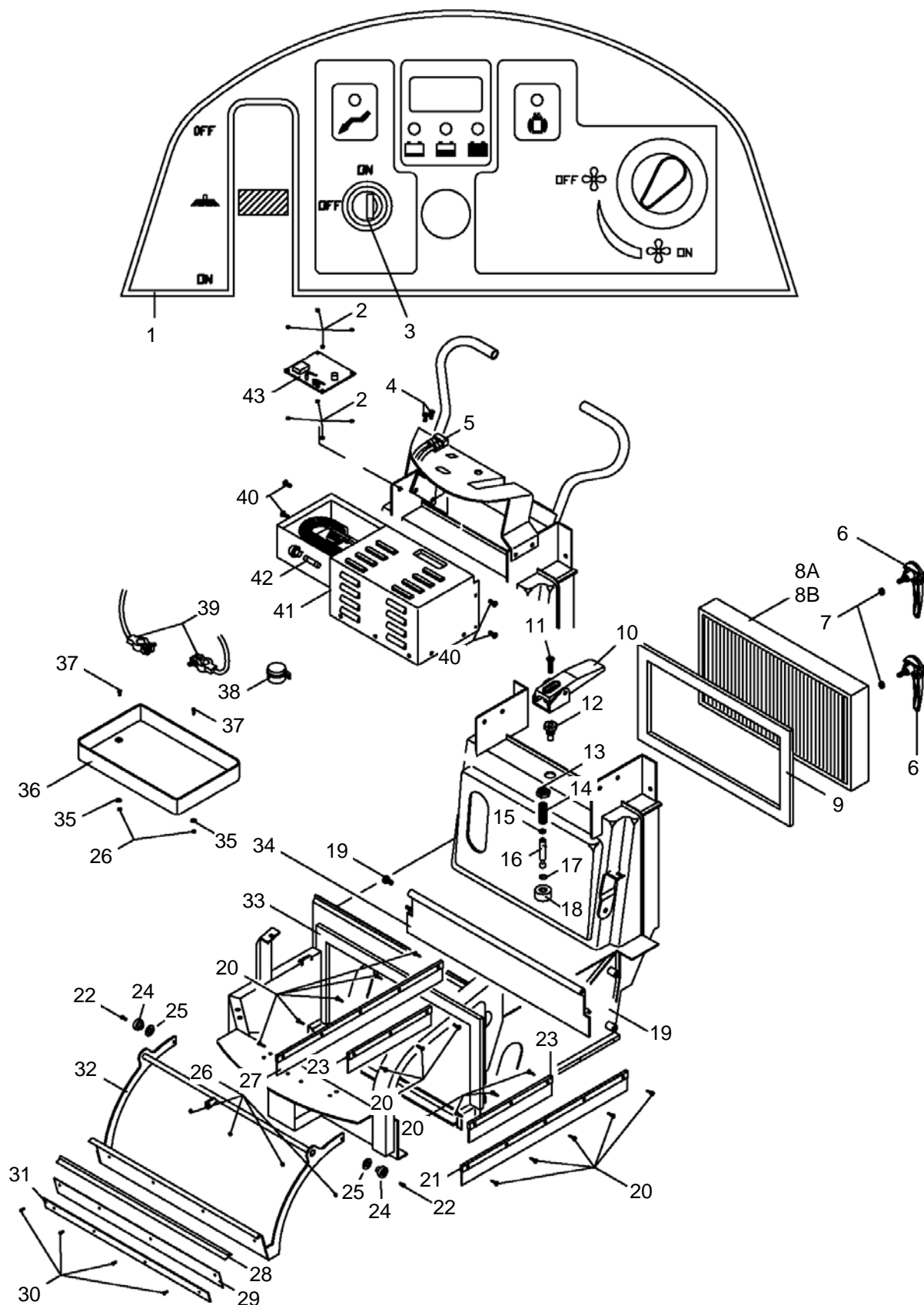


## MOTOR/DRIVE GROUP

REF	PART NO.	QTY	DESCRIPTION	SERIAL NO. FROM	NOTES:
54	1500279	1	REDUCERS TOOTHED SHAFT		
55	1500275	1	KEY 5 X 5 X 20		
56	1500276	1	TOOTHED GEAR		
57	1500278	1	REDUCERS STRAIGHT TOOTHED GEAR		
58	1500282	1	MAIN BROOM ADJUSTING RAIL		
59	1500052	12	BLOCK NUT M6		
60	1500283	1	WASHER 15 X 28		
61	1500065	3	OUTER SNAP RING DIA. 15		
62	1500271	1	REDUCTION GEAR COVER		
63	1500287	1	BUTTERFLY VALVE NYLON		



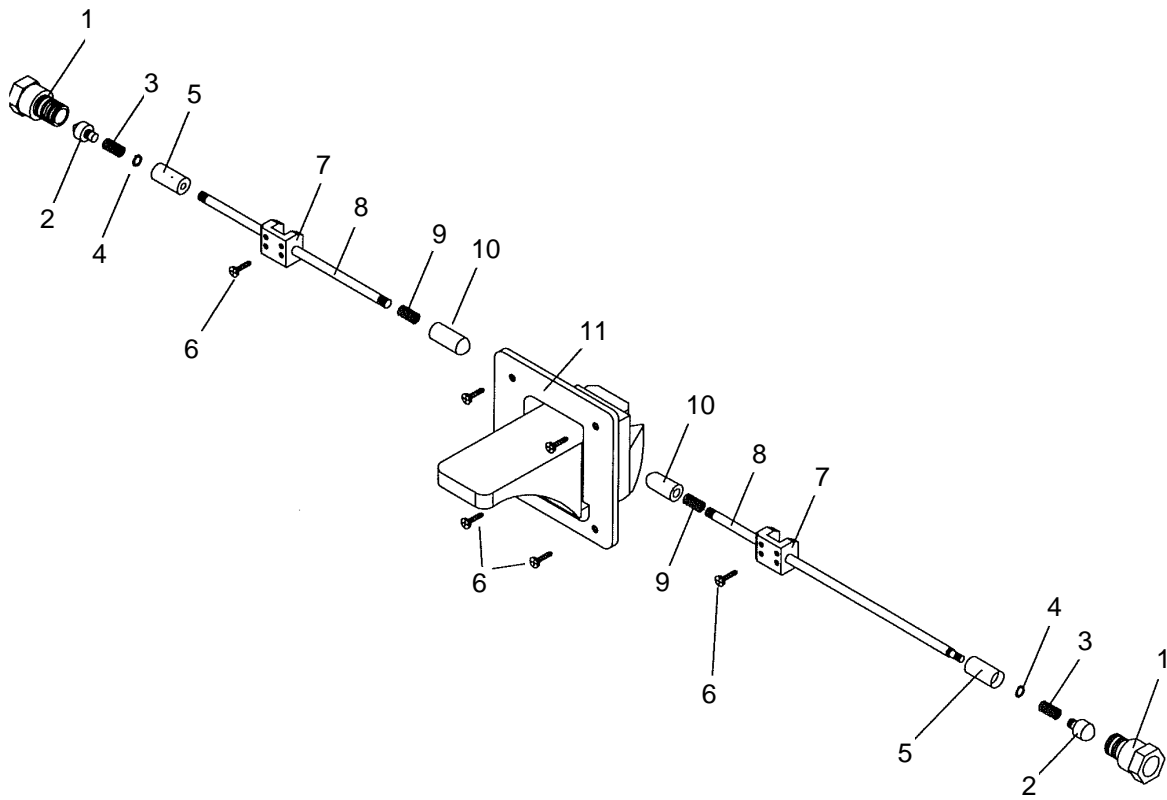
# BATTERY/FILTER GROUP



## BATTERY/FILTER GROUP

REF	PART NO.	QTY	DESCRIPTION	SERIAL NO. FROM	NOTES:
1	1500302	1	DASHBOARD PLATE		
2	1500184	8	NUT, M4		
3	1500152	1	KEY SWITCH		
4	1500154	2	SCREW 5 X 20		
5	1500304	1	BATTERY CHARGER CONNECTOR		
6	1500167	2	UNLOCKING FILTER HANDLE		
7	1500166	2	NUT, M8		
8A	1500205	1	FILTER		
8B	1500306	-	FILTER, POLYESTER		OPTIONAL
9	1500223	1	FILTER GASKET		
10	1500161	1	FILTERSHAKER LEVER COMPLETE		
11	1500160	1	SCREW, 6 X 25		
12	1500162	1	FILTERSHAKER RAIL		
13	1500172	1	NUT, M18		
14	1500173	1	FILTERSHAKER SPRING		
15	1500174	1	OR 106 GASKET		
16	1500175	1	PIN		
17	1500176	1	INNER SNAP RING DIA. 16		
18	1500177	1	INNER SNAP RING DIA. 16		
19	1500178	2	SCREW, 10 X 16		
20	1500182	16	SCREW, 3.5 X 9.5		
21	1500208	1	LEFT SIDE FLAP		
22	1500078	2	SCREW, 8 X 22		
23	1500181	2	INNER FLAP GRAY		
24	1500310	2	BUSHING		
25	1500093	2	WASHER, 8 X 24		
26	1500184	7	NUT, M4		
27	1500180	1	RIGHT SIDE FLAP GRAY		
28	1500309	1	RUBBER		
29	1500308	1	SQUEEGEE		
30	1500183	16	SCREW, 4 X 16		
31	1500307	1	FLAP FIXER		
32	1500312	1	FLAP RISE ROCKER		
33	1500305	1	ADHESIVE KIT, FRONT DRAWER		
34	1500225	1	REAR FLAP		
35	1500158	2	WASHER, 5 X 10		
36	1500159	1	BATTERY CONTAINER		
37	1500303	2	SCREW, 4X12		
38	1500224	1	REMOTE SWITCH		
39	1500171	1	ELECTRICAL INSTILLATION		
40	1500116	4	SCREW, 6 X 10		
41	1500313	1	CHARGER, 12V 12A 1101V 60HZ		
42	1500311	1	FUSE, 4A		
43	1500156	1	12V MOTOR BLOCKING DRIVE		
44	1500188	REF	FUSE, 50A		NOT SHOWN
45	1500189	REF	FUSE, 1.6A		NOT SHOWN

# BRAKE GROUP



**BRAKE GROUP**

REF	PART NO.	QTY	DESCRIPTION	SERIAL NO. FROM	NOTES:
1	1500328	2	PARKING BRAKE BUSHING		
2	1500329	2	PIVOT		
3	1500330	2	PARKING BRAKE SPRING 23		
4	1500331	2	SEEGER H UNI7434 DIA 6		
5	1500332	2	BUSHING		
6	1500333	2	PARKING BRAKE BLOCK		
7	1500334	2	PARKING BRAKE PIVOT 700		
8	1500335	2	PARKING BRAKE SPRING 46		
9	1500336	2	PIVOT		
10	1500337	1	PARKING BRAKE PEDAL & SUPPORT		
11	1500338	6	SCREW, UNI6954 4.8 X 16 ST		



**Interpump Cleaning S.P.A.**  
Via delle Industrie , 35  
2610 Vaiano Cremona

<b>I</b>	<b>DICHIARAZIONE "CE" DI CONFORMITA'</b>
<b>GB</b>	<b>"CE" CONFORMITY DECLARATION</b>
<b>F</b>	<b>DECLARATION DE CONFORMITE "CE"</b>
<b>D</b>	<b>"CE" KONFORMITÄTSEKTLÄRUNG</b>
<b>E</b>	<b>DECLARACIÓN "CE" DE CONFORMIDAD</b>
<b>P</b>	<b>DECLARAÇÃO "CE" DE CONFORMIDADE</b>
<b>NL</b>	<b>KONFORMITEITSVERKLARING "CE"</b>
<b>DK</b>	<b>OVERENSSTEMMELSESEKTLÆRING "CE"</b>
<b>S</b>	<b>FÖRSÄKRAN OM ÖVERENSSTÄMMELSE "CE"</b>
<b>N</b>	<b>BEKREFTELSE OM OVERENSSTEMMELSE "CE"</b>
<b>SF</b>	<b>YHDENMUKAISUUSVAKUUTUS "CE"</b>
<b>GR</b>	<b>Δ»lwsh snmbatÒthtaj "CE"</b>

**73/23/CE ; 98/37/CE ; 89/336/CE ; 85/374/CE  
2000/14/CE**

**E successive modifichie - and following changes**

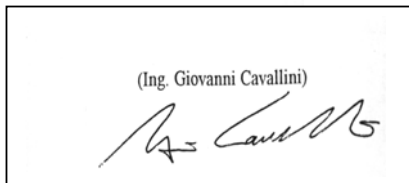
Modello-Model-Modèle-Modell-Modelo- Modell-Model-Malli-  
Model-Modelo-Model-Montelo  
ECOL65 – ECOL65T – ECOL85T – KC500ET – KC700ET –  
K501BT – K701BT – 500E – 500ET – 505ET – 510ET – 520E –  
520ET – 531ET – 540ET – 550ET – 700ET – 705ET – 710ET –  
711ET – 720ET – 721ET – 731 ET – 740ET – 900 EH – 700EH –  
BPS-28 – SWP-2800 – SCOUT 28 – RWB28 – RWB36 – 460-3610-  
SCOUT 24

Matricola-Serial n.-Matricule-Maschinennummer-Matricula-  
Seriennummer-  
Seriennummer-Sarjanumero-Registrierungsnummer-Matricula-Seriennummer-  
(Ariqmos) Mhtrwon



POSITION: Legal representative Date: **15.04.2002**

NAME: **Ing. Giovanni Cavallini**



<b>I</b>	-Dichiariamo sotto la nostra esclusiva responsabilità che il prodotto al quale questa dichiarazione si riferisce è conforme alle seguenti norme o ad altri documenti normativi: EN 60204-1 – EN 292/1 – EN 292/2 – EN 60335-1 – EN 60335-2-72 – EN 50106 – EN 60529 – EN 50081-1 – EN 50082-1 – EN 414 – EN 45014 – EN 60704-1 Teknova srl ha redatto il fascicolo tecnico relativo al presente modello.
<b>GB</b>	-We declare on our own responsibility that the product to which this declaration refers is in accordance with the following rules or with other documents containing official rules: EN 60204-1 – EN 292/1 – EN 292/2 – EN 60335-1 – EN 60335-2-72 – EN 50106 – EN 60529 – EN 50081-1 – EN 50082-1 – EN 414 – EN 45014 – EN 60704-1 Teknova srl has prepared the technical booklet of this model.
<b>F</b>	-Nous déclarons sous notre exclusive responsabilité que le produit auquel cette déclaration se réfère est conforme aux normes suivantes ou à d'autres documents qui contiennent normes officielles: EN 60204-1 – EN 292/1 – EN 292/2 – EN 60335-1 – EN 60335-2-72 – EN 50106 – EN 60529 – EN 50081-1 – EN 50082-1 – EN 414 – EN 45014 – EN 60704-1 Teknova srl a rédigé le dossier technique relatif à ce modèle.
<b>D</b>	-Auf unserer Alleinverantwortung erklären wir, daß das Produkt, worauf sich diese Zustimmungen bezieht, folgenden Normen oder anderen Vorschriften gemäß ist: EN 60204-1 – EN 292/1 – EN 292/2 – EN 60335-1 – EN 60335-2-72 – EN 50106 – EN 60529 – EN 50081-1 – EN 50082-1 – EN 414 – EN 45014 – EN 60704-1 Teknova srl hat das technische Anweisungsheft bezüglich dieses Modells verfasst.
<b>E</b>	-Bajo nuestra exclusiva responsabilidad, declaramos que el producto, al que esta declaración se refiere, es conforme con las siguientes normas u otros documentos normativos: EN 60204-1 – EN 292/1 – EN 292/2 – EN 60335-1 – EN 60335-2-72 – EN 50106 – EN 60529 – EN 50081-1 – EN 50082-1 – EN 414 – EN 45014 – EN 60704-1 Teknova srl ha redactado el fascículo técnico sobre el presente modelo.
<b>P</b>	-Declaramos sob a nossa exclusiva responsabilidade que o produto ao qual esta declaração se refere está em conformidade com as seguintes normas ou outros documentos normativos: EN 60204-1 – EN 292/1 – EN 292/2 – EN 60335-1 – EN 60335-2-72 – EN 50106 – EN 60529 – EN 50081-1 – EN 50082-1 – EN 414 – EN 45014 – EN 60704-1 Teknova srl redigiu o fascículo técnico que se refere a este modelo.
<b>NL</b>	-Wij verklaren onder onze exclusieve verantwoordelijkheid dat het product: waarvan deze verklaring betrekking heeft, conform is aan de volgende normen en aan andere daarvan deel uitmakende documenten: EN 60204-1 – EN 292/1 – EN 292/2 – EN 60335-1 – EN 60335-2-72 – EN 50106 – EN 60529 – EN 50081-1 – EN 50082-1 – EN 414 – EN 45014 – EN 60704-1 Teknova srl heeft het technische rapport betrekking hebbende op het onderhavige model opgesteld
<b>DK</b>	-Vi forsikrer under eget ansvar at følgende produkt som omfattes af denne erklæring er i overensstemmelse med vilkårene i følgende direktiv eller andre love: EN 60204-1 – EN 292/1 – EN 292/2 – EN 60335-1 – EN 60335-2-72 – EN 50106 – EN 60529 – EN 50081-1 – EN 50082-1 – EN 414 – EN 45014 – EN 60704-1 Teknova srl har udarbejdet den tekniske side om denne model.
<b>S</b>	-Vi försäkrar under eget ansvar att följande produkt som omfattas av denna försäkran i överensstämmelse med villkoren i följande direktiv eller andra lagar: EN 60204-1 – EN 292/1 – EN 292/2 – EN 60335-1 – EN 60335-2-72 – EN 50106 – EN 60529 – EN 50081-1 – EN 50082-1 – EN 414 – EN 45014 – EN 60704-1 Teknova srl har avfattat det tekniska bladet om denna modell.
<b>N</b>	-Vi forsikrer under eget ansvar at følgende produkt som omfattes af denne bekræftelsen er i overensstemmelse med vilkårene i følgende direktiv eller andre lover: EN 60204-1 – EN 292/1 – EN 292/2 – EN 60335-1 – EN 60335-2-72 – EN 50106 – EN 60529 – EN 50081-1 – EN 50082-1 – EN 414 – EN 45014 – EN 60704-1 Teknova srl har uformet det tekniske bladet om denne modellen.
<b>SF</b>	-Vakuutamme omalla vastuullamme, että seuraava tuote jota tämä vakuutus koskee, on yhdenmukainen seuraavassa direktiivissä tai muissa laeissa olevien ehtojen kanssa: EN 60204-1 – EN 292/1 – EN 292/2 – EN 60335-1 – EN 60335-2-72 – EN 50106 – EN 60529 – EN 50081-1 – EN 50082-1 – EN 414 – EN 45014 – EN 60704-1 Teknova srl on laatinut tämän mallin teknisen lehden.
<b>GR</b>	- Dhìlènoume upeÚquna Òti to proiÒn sto opofo anafereitai h paròÚsa d»lwsh einai dÚmfwno me tonj parakÈtw kanonismoÚj » Èlla nomoqetikÈ eggrafa: EN 60204-1 – EN 292/1 – EN 292/2 – EN 60335-1 – EN 60335-2-72 – EN 50106 – EN 60529 – EN 50081-1 – EN 50082-1 – EN 414 – EN 45014 – EN 60704-1 Teknova srl sunetaxe thn technikÈ ekqesh scetikÈ me to parÒn montelo.