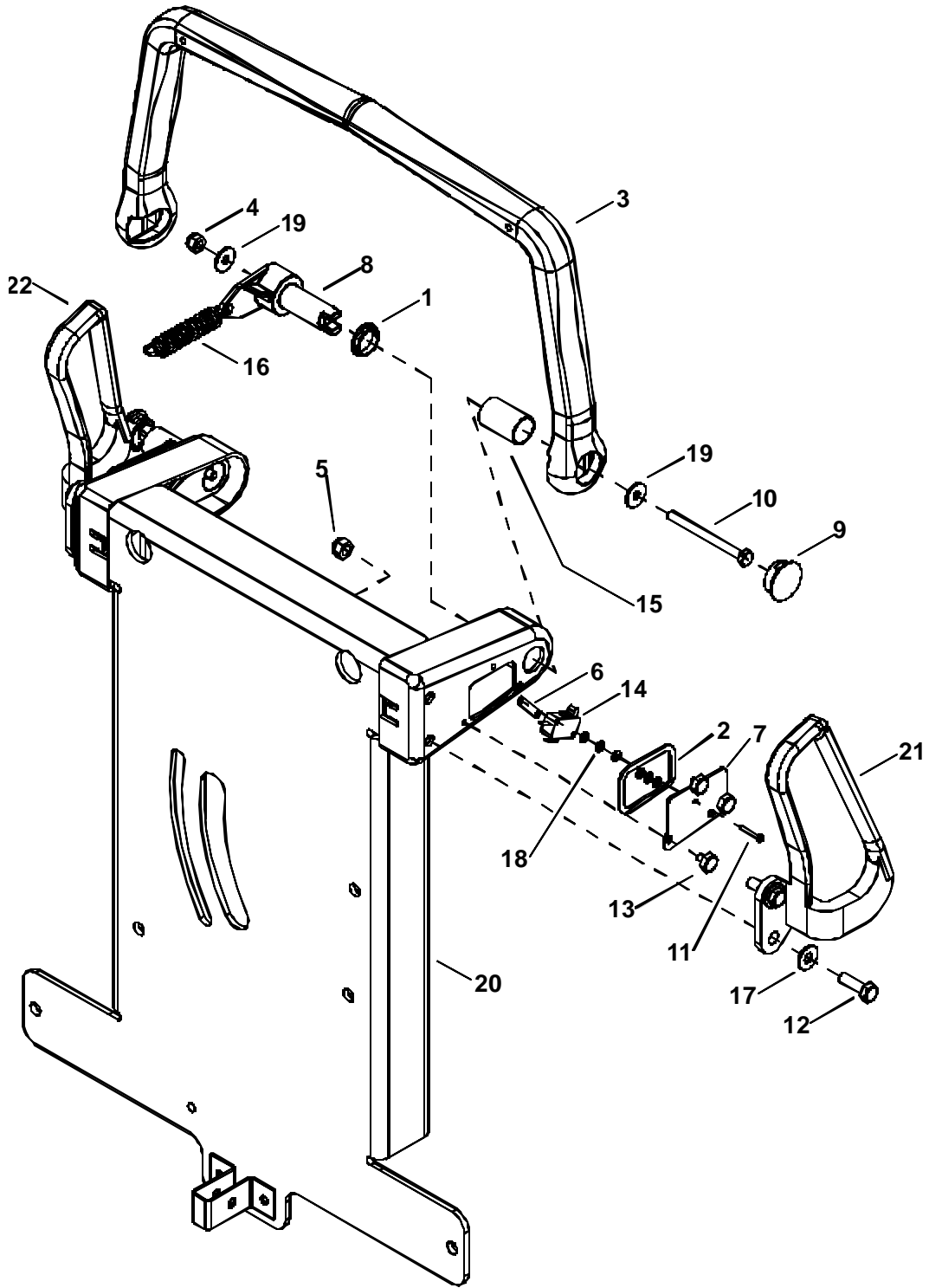


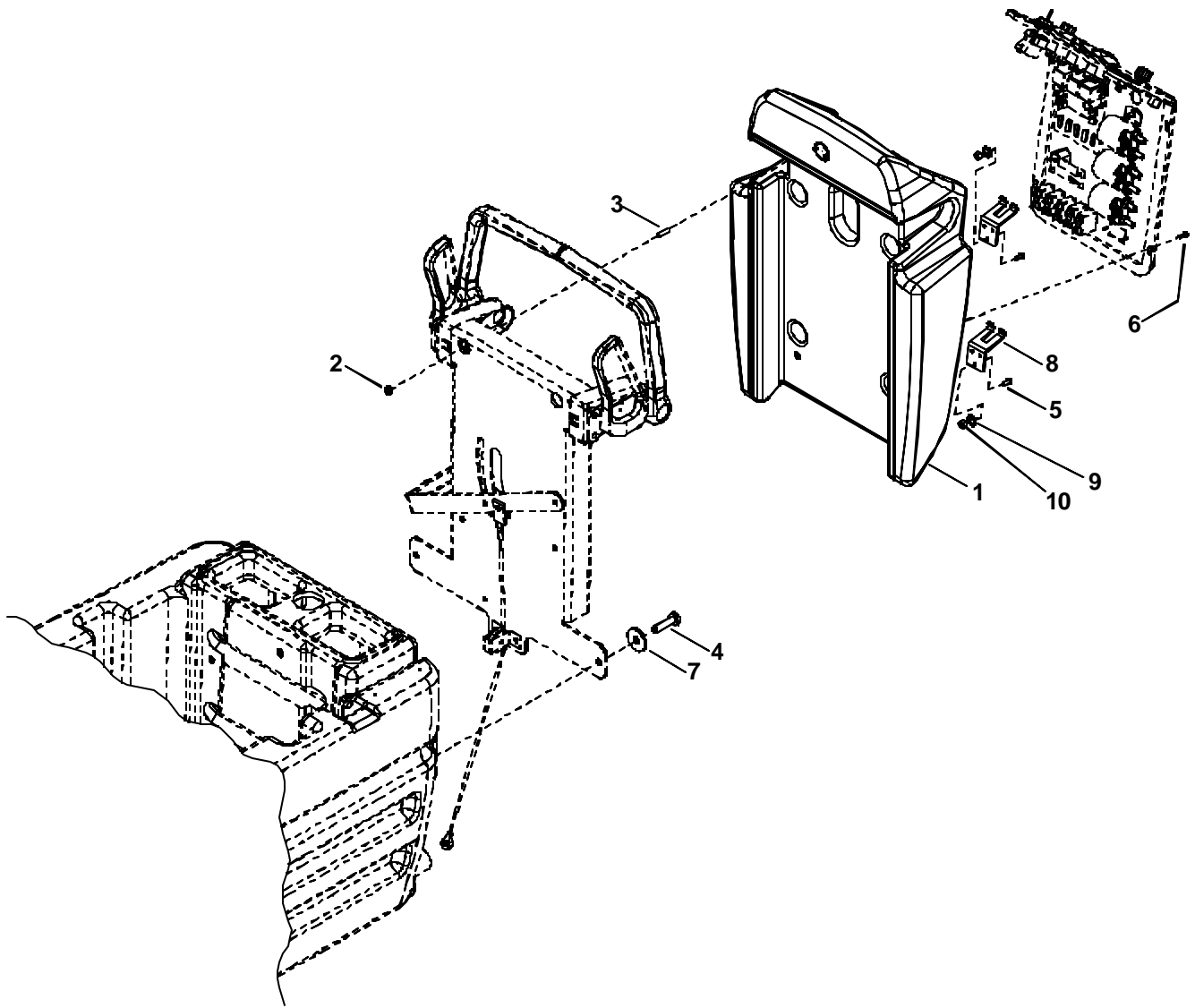
# CONTROL HANDLE GROUP



## CONTROL HANDLE GROUP

REF	PART NO.	QTY	DESCRIPTION	SERIAL NO. FROM	NOTES:
1	09129	2	BEARING, 3/4 NYLINER SI		
2	35220	2	GASKET, MICRO SWITCH COVER		
3	38275	1	HANDLE, CONTROL		
4	57047	2	NUT, 1/4-20 HEX NYLOCK		
5	57113	4	NUT, 5/16-18 HEX NYLOCK		
6	57247	2	NUT, PLATE SWITCH MOUNTING		
7	62726	2	PLATE, MICROSWITCH MOUNT		
8	66293	2	PIVOT, HANDLE		
9	66301	2	PLUG, 1.00 HOLE		
10	70129	2	SCR, 1/4-20 X 3.00 HHCS		
11	70245	4	SCR, 4-40 X 3/4 PPHMS		
12	70302	4	SCR, 5/16-18 X 1.00 HHCS GR5		
13	70351	6	SCR, 10-32 X 3/8 HHTR W/STAR		
14	72093	2	SWITCH, MICRO		
15	73913	2	SPACER, 7/8 OD X .78 ID X 1.375 L		
16	73938	2	SPRING, EXT. .5D X 2.75L X .075W		
17	87029	4	WASHER, 5/16 X 3/4 SS		
18	87068	12	WASHER, 1/8 RIVET BACKUP		
19	87090	4	WASHER, 1/4 X 3/4 FLAT		
20	89186	1	WELDMENT, TOWER		
21	140247	1	BAR, GRAB HANDLE LEFT		
22	140248	1	BAR, GRAB HANDLE RIGHT		

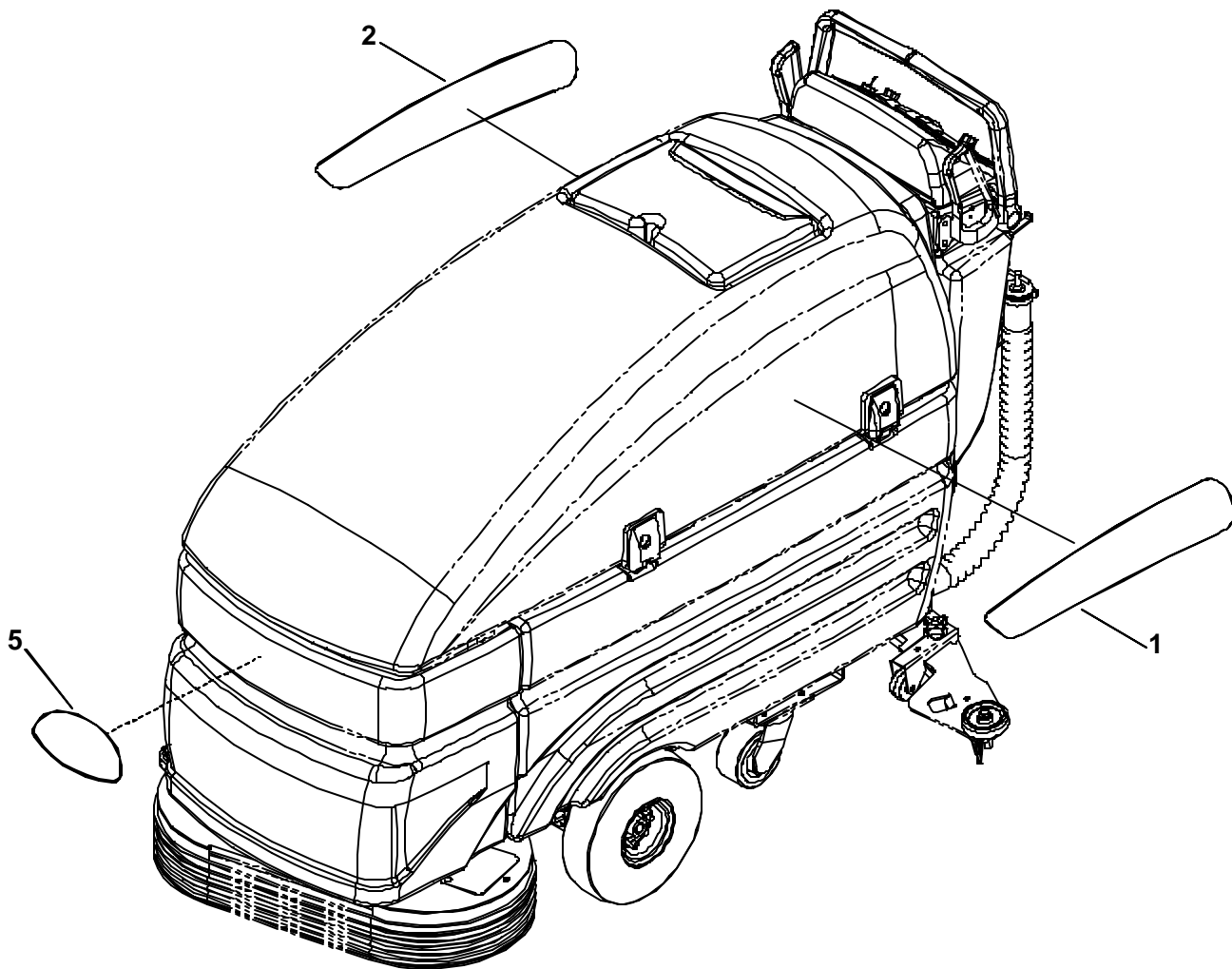
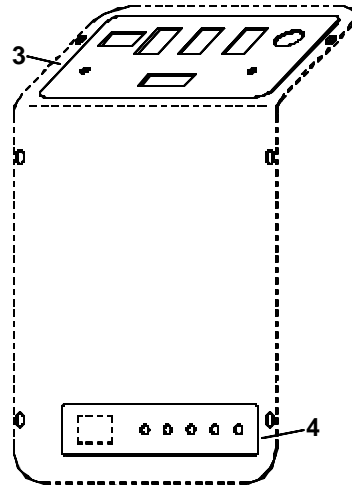
# CONTROL TOWER GROUP



**CONTROL TOWER GROUP**

REF	PART NO.	QTY	DESCRIPTION	SERIAL NO. FROM	NOTES:
1	27757	1	CONSOLE, REAR		
2	57189	4	NUT, 1/4-20 FLANGE LOCK		
3	70251	4	SET SCR, 1/4-20 X 1.0 PLTD DL		
4	70305	4	SCR, 5/16-18 X 3/4HHCSGR5PLTDL		
5	70604	6	SCR, 10-32 X 5/8 PPHMS BLACK		
6	70532	6	SCR, 10-32 X 1/2 PPHMS BLK		
7	87029	4	WASHER, 5/16 FLAT SS		
8	140133	2	BRACKET, RECOVERY HOSE		
9	87018	6	WASHER, #10 X 9/16 OD		
10	57030	6	NUT, 10-32 HEX NYLOCK		

# DECAL GROUP

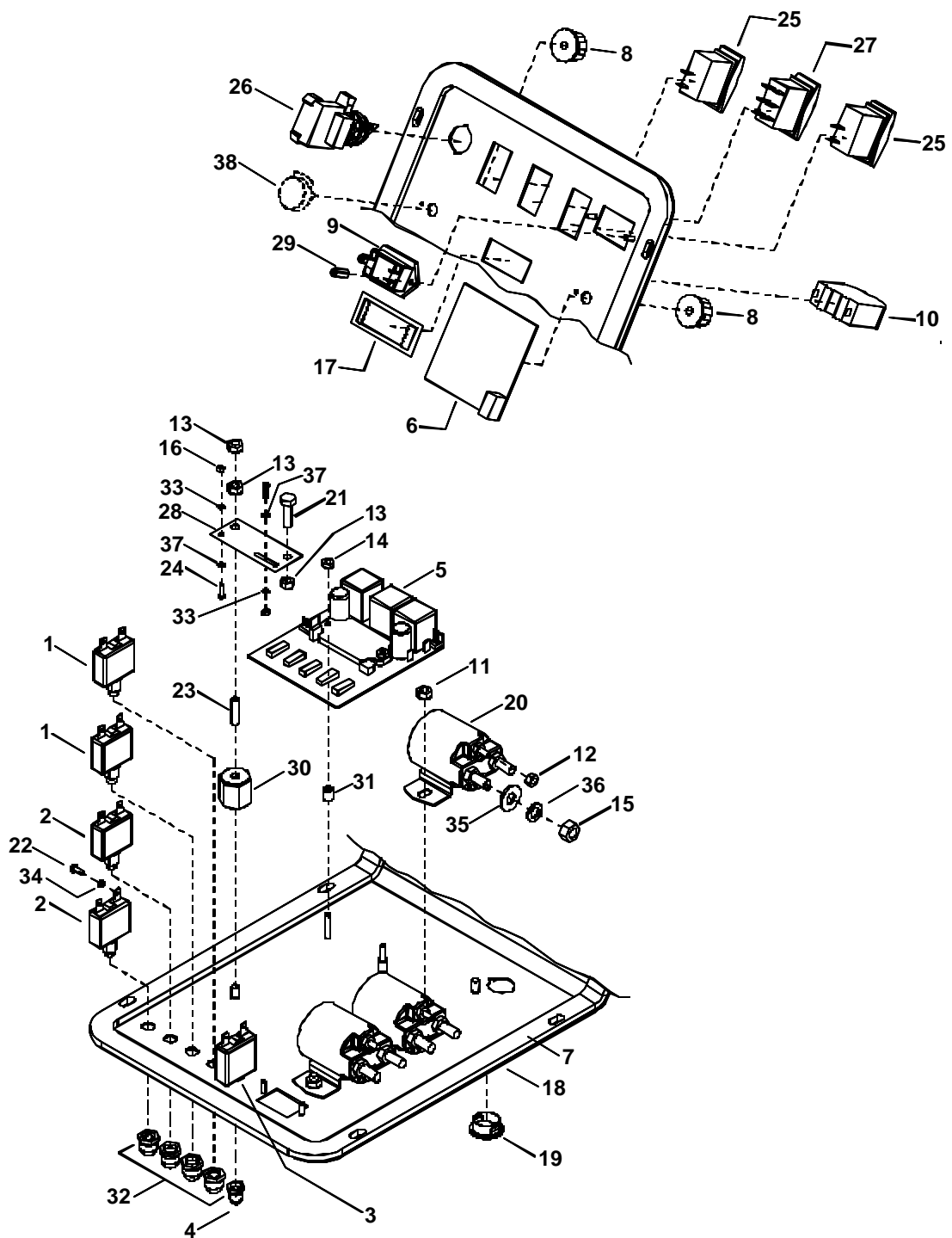


## DECAL GROUP

REF	PART NO.	QTY	DESCRIPTION	SERIAL NO. FROM	NOTES:
1	50915	1	LABEL, SABER (LEFT)		
2	50916	1	LABEL, SABER (RIGHT)		
3	500023	1	LABEL, SCRUBBER PANEL		
4	500024	1	LABEL, CIRCUIT BREAKERS		
5	50990	1	LABEL, WINDSOR LOGO DOMED		
6	98721	1	CARD, WINDSOR SERVICE		NOT SHOWN
7	14382	1	BAND, SERVICE CARD		NOT SHOWN

**NOTE:** SEE "SAFETY LABEL LOCATION" PAGE FOR SAFETY LABEL INFORMATION.

# ELECTRICAL PANEL GROUP

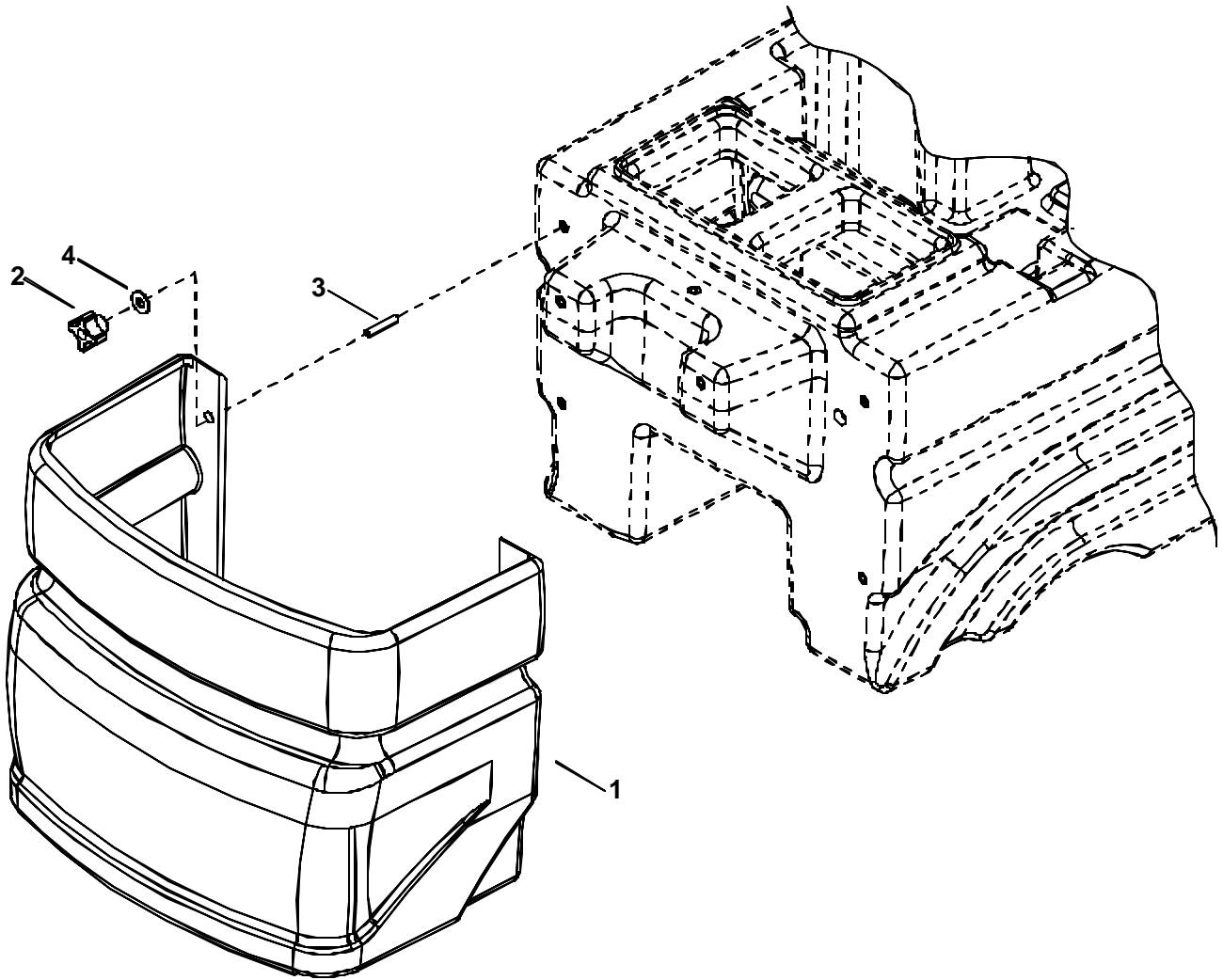


## ELECTRICAL PANEL GROUP

REF	PART NO.	QTY	DESCRIPTION	SERIAL NO. FROM	NOTES:
1	14606	2	BREAKER, 30A 250VAC 50VDC		
2	14607	2	BREAKER, 25A 250VAC 50VDC		
3	14717	1	BREAKER, 3A 250VAC 50VDC		
4	14942	1	BOOT, 3/8 CIRCUIT BREAKER		
5	27695	1	CONTROLLER, 24VDC PROPEL MTR		
6	27858	1	CIRCUIT BOARD, SOLUTION/FLOAT		
7	35210	1	GASKET, ELECTRIC PANEL		
8	48072	2	KNOB, 1.06 OD X .25 ID W/SET SCR		
9	54145	1	METER, 24V BATTERY CHARGE LEVEL		
10	54156	1	METER, 0-50 AMP DC		
11	57047	4	NUT, 1/4-20 HEX NYLOCK		
12	57104	6	NUT, 10-32 W/STAR WASHER PLTD		
13	57105	3	NUT, 1/4-20 HEX W/STAR		
14	57106	2	NUT, 8-32 HEX W/STAR		
15	57117	6	NUT, 5/16-24 HEX PLTD		
16	57256	2	NUT, 6-32 HEX BRASS		
17	62283	1	PLATE, METER RETAINING		
18	62808	1	PLATE, ELECTRIC PANEL		
19	66321	1	PLUG, .875 HOLE		
20	67393	3	RELAY, 24VDC 100 AMP		
21	70011	1	SCR, 1/4-20 X 5/8 HHCS SS DL		
22	70067	8	SCR, 6-32 X 3/8 PPHMS SS		
23	70393	1	SET SCR, 1/4-20X 1.25L		
24	70615	2	SCR, 6-32 X 3/8 SRHMS BR		
25	72130	2	SWITCH, SPST 2-POSITION ROCKER		
26	72159	1	SWITCH, KEY 2 POSITION		
27	72165	1	SWITCH, DPDT 3-POSITION ROCKER		
28	73987	1	SHUNT, DC AMM. 25 AMP, 50 MV		
29	73538	2	STANDOFF, 5/8 L, 6-32		
30	73659	1	STANDOFF, INS. 1.0L, 1/4-20 THD		
31	73734	2	SPACER, .166 ID X .313 OD X .375L AL		
32	80845	4	BOOT, 3/8 CIRCUIT BREAKER		
33	87026	2	WASHER, #6 LOCK EXT STAR SS		
34	87134	8	WASHER, #6 SPLIT		
35	87142	6	WASHER, .344X.69X.066 FLAT PLT		
36	87166	6	WASHER, 5/16 EXT LOCK PLTD		
37	87187	2	WASHER, #6 FLAT BRASS		
38	66335	REF	POTENTIOMETER		SERVICE ONLY



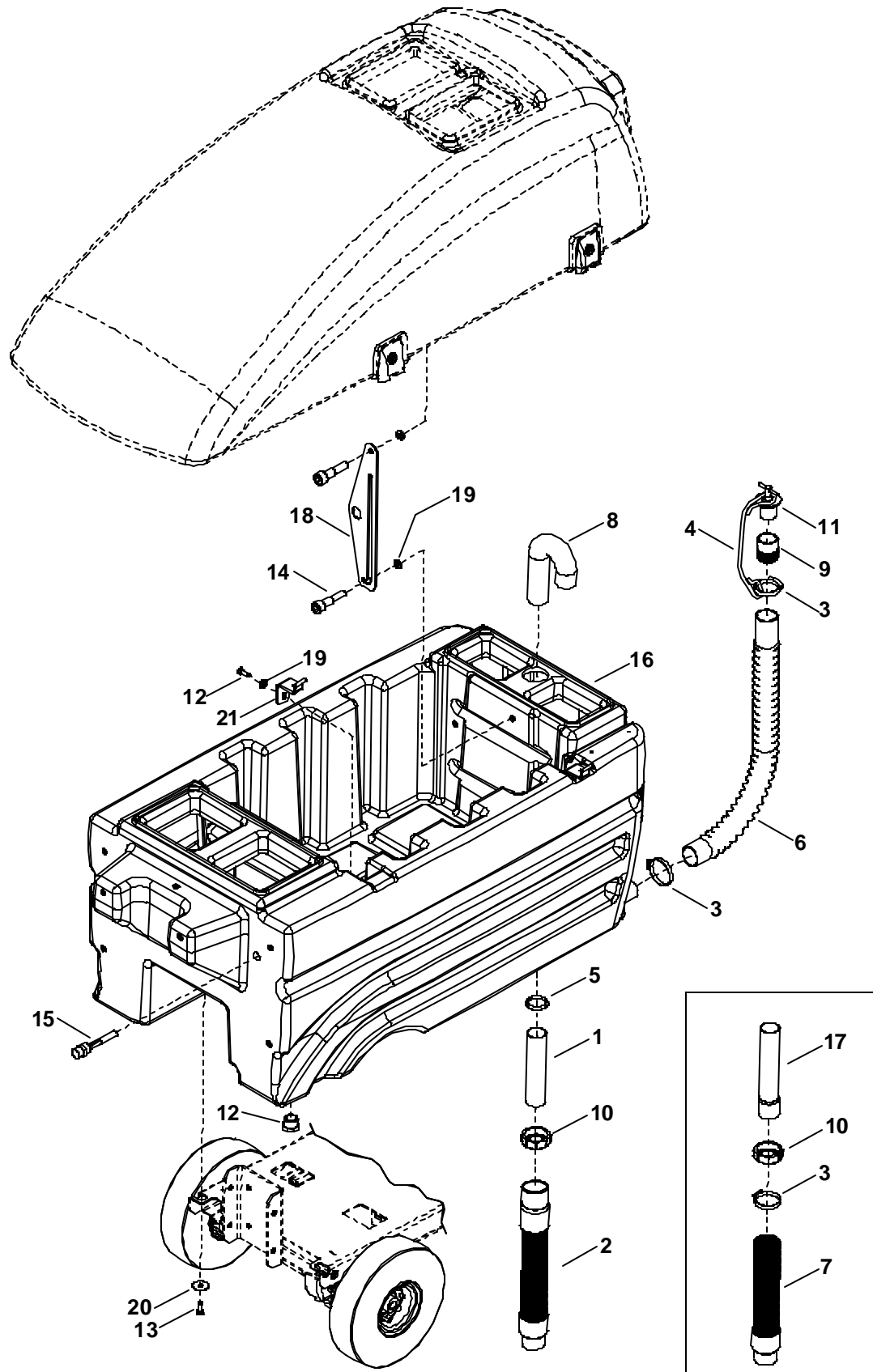
# FRONT COVER GROUP



## FRONT COVER GROUP

REF	PART NO.	QTY	DESCRIPTION	SERIAL NO. FROM	NOTES:
1	27860	1	COVER, FRONT 24V DISK		
2	48012	2	KNOB, 5/16-18 4 PRONG		
3	70639	4	SCR, 5/16 X 1.75 SSSCU		
4	87029	2	WASHER, 5/16 FLAT SS		

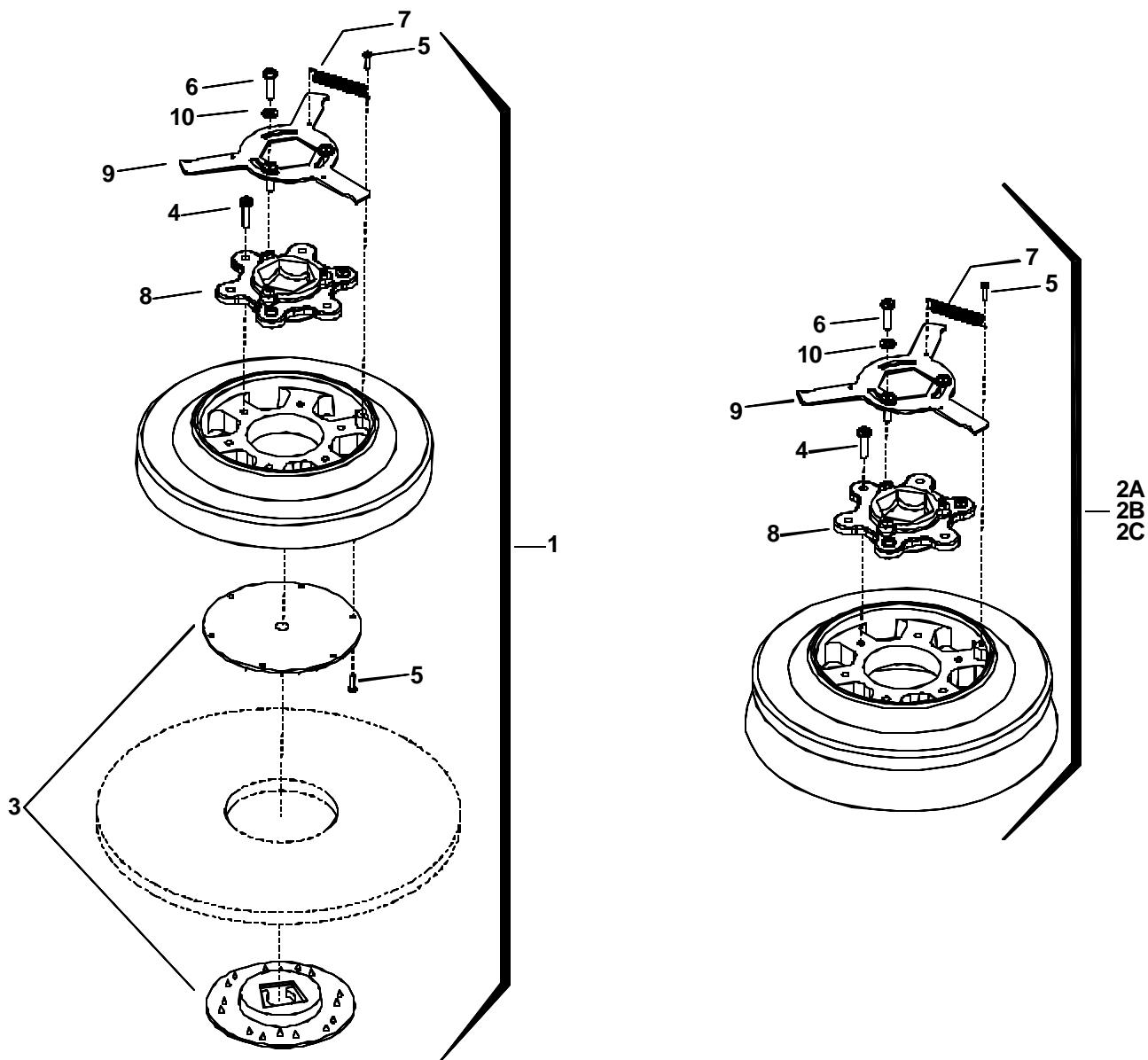
# RECOVERY TANK GROUP



## RECOVERY TANK GROUP

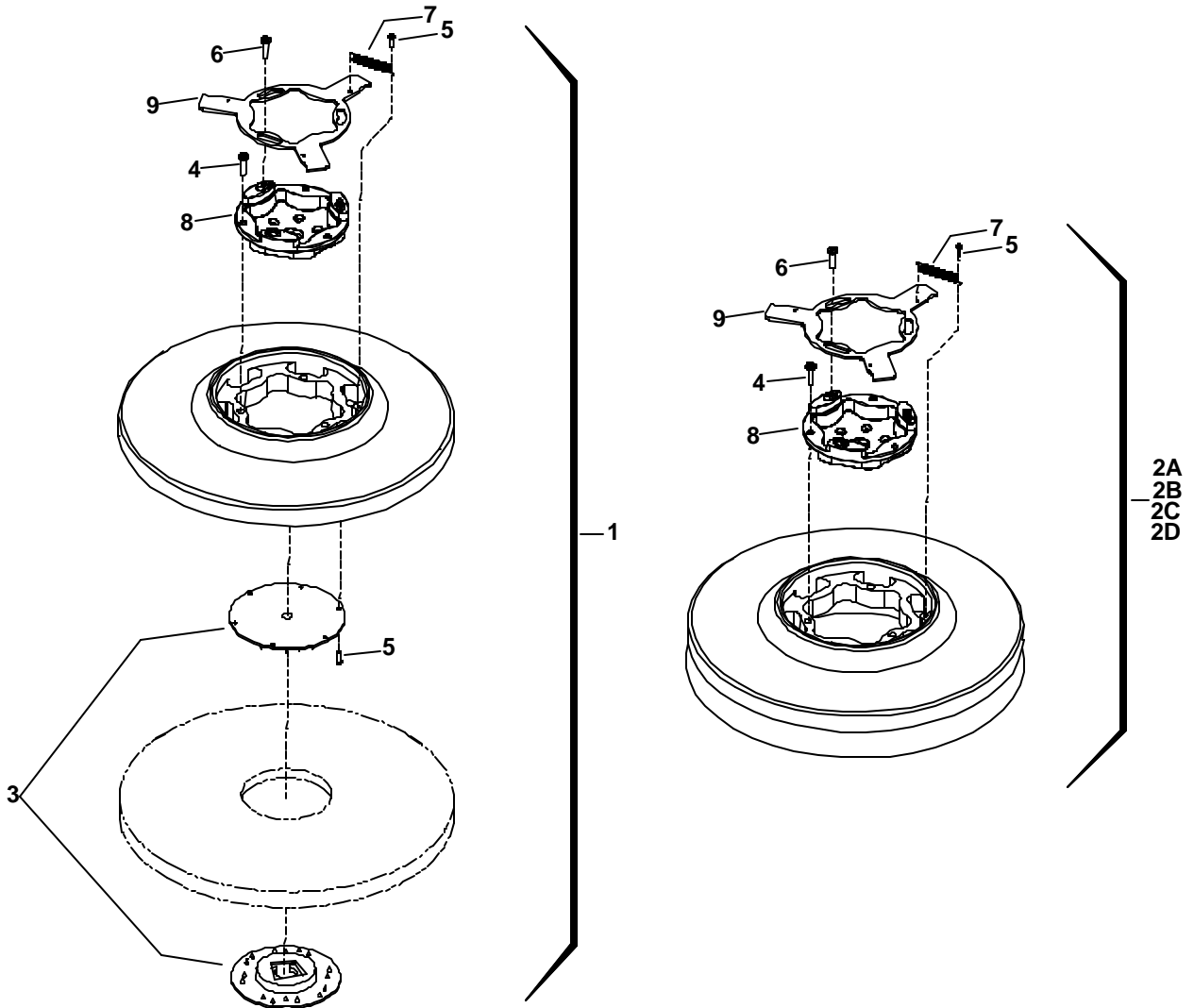
REF	PART NO.	QTY	DESCRIPTION	SERIAL NO. FROM	NOTES:
1	78480	1	TUBE, 1.5 X 12 PVC	1000078636	
2	39307	1	HOSE ASM, 1.50 VAC	1000078636	
3	20064	3	CLAMP, 2.0" WORM GEAR X .312W		
4	27670	1	CORD, DRAIN PLUG		
5	35219	1	GASKET, 1 1/2 COMPRESSION		
6	39472	1	HOSE, 1.5 X 24.0 DRAIN		
7	39511	1	HOSE ASM, 1.5 X 11 BLK VAC		
8	39519	1	HOSE, P-TRAP		
9	40019	1	HOSEBARB, 1.5 DOUBLE MCHD		
10	57033	1	NUT, 1.5 SLIP JOINT		
11	66227	1	PLUG, DRAIN HOSE		
12	66240	1	PLUG, 3/4" MPT PVC		
13	70305	6	SCR, 5/16-18 X 3/4HHCSGR5PLTDL		
14	70641	2	SHOULDER BOLT, 3/8OD X 3/8L SS		
15	73906	1	SWITCH ASM, FLOAT		
16	75296	1	TANK, RECOVERY		
17	78443	1	TUBE, 1.50 X 12.0" PVC		
18	82575	1	PLATE, TANK SUPPORT		
19	87029	4	WASHER, 5/16 FLAT SS		
20	87212	4	WASHER, .344ID X 1.13OD X .09T PLTD		
21	89127	2	WLDMNT, HINGE PIN		

# SCRUB BRUSH/PAD DRIVER GROUP (HEX DRIVE)-24 IN



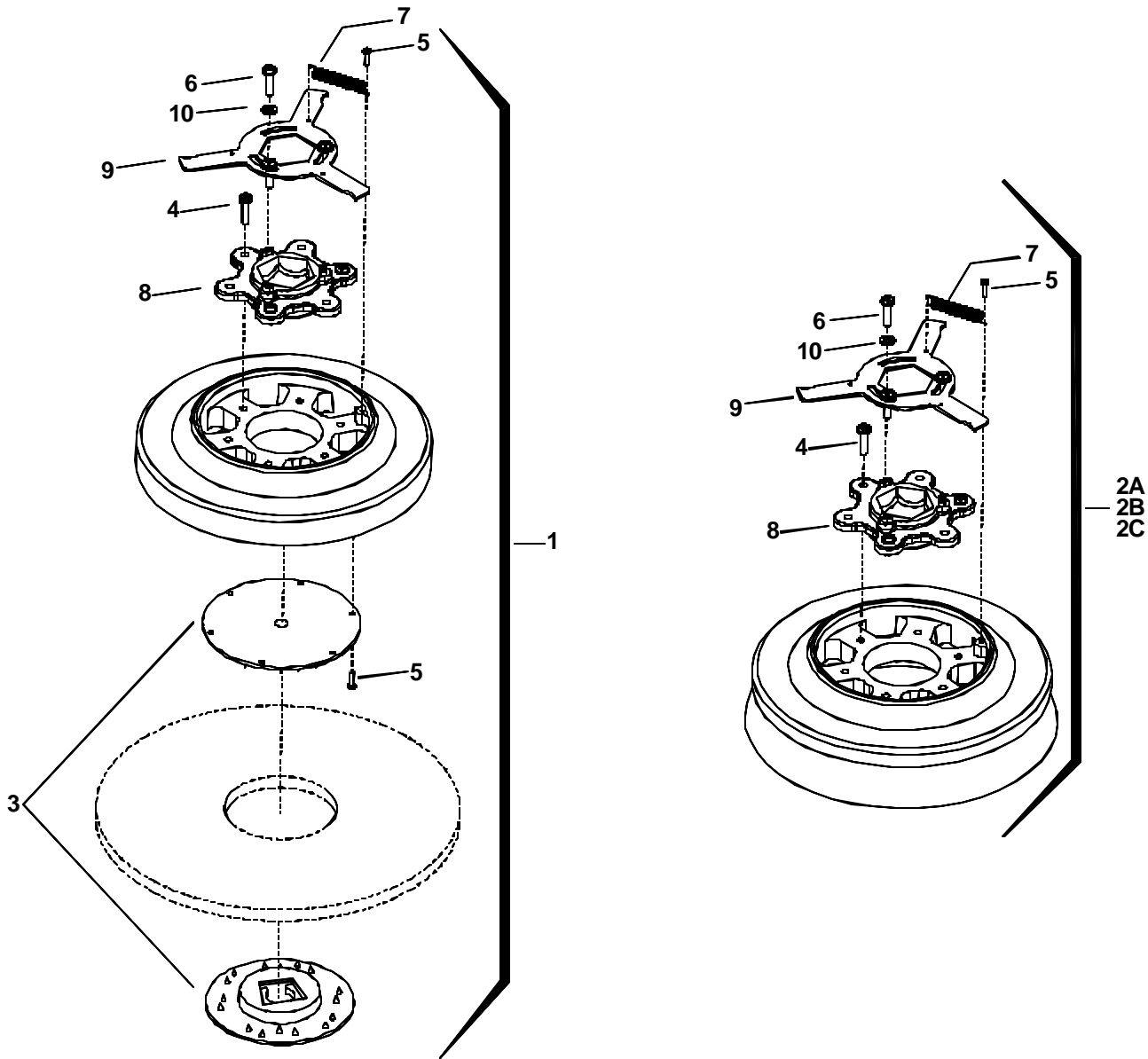
REF	PART NO.	QTY	DESCRIPTION	SERIAL NO. FROM	NOTES:
1	02336	2	PAD DRIVER, 12" HEX		
2A	02341	2	BRUSH, 12" POLYPROPYLENE HEX		
2B	02342	2	BRUSH, 12" NYLON HEX		
2C	02343	2	BRUSH, 12" MILD GRIT HEX		
3	51284	1	LOCK, PAD CENTER SNAP, TWO STEP		
4	70682	6	SCR, 1/4-20 X 5/8 PPHTC SS		
5	70576	4	SCR, #8 X 1/2 PPH T/S SS		
6	70682	3	SCR, 1/4-20 X 5/8 PPHTC SS		
7	73817	1	SPRING, EXT .31 D X 2.0 L X .03 W SS		
8	73861	1	CLUTCH, HEX DRIVE		
9	81471	1	PALTE, BRUSH RELEASE		
10	87013	3	WASHER, 1/4 ID X 5/8 OD SS		

# SCRUB BRUSH/PAD DRIVER GROUP (STAR DRIVE)-24 IN



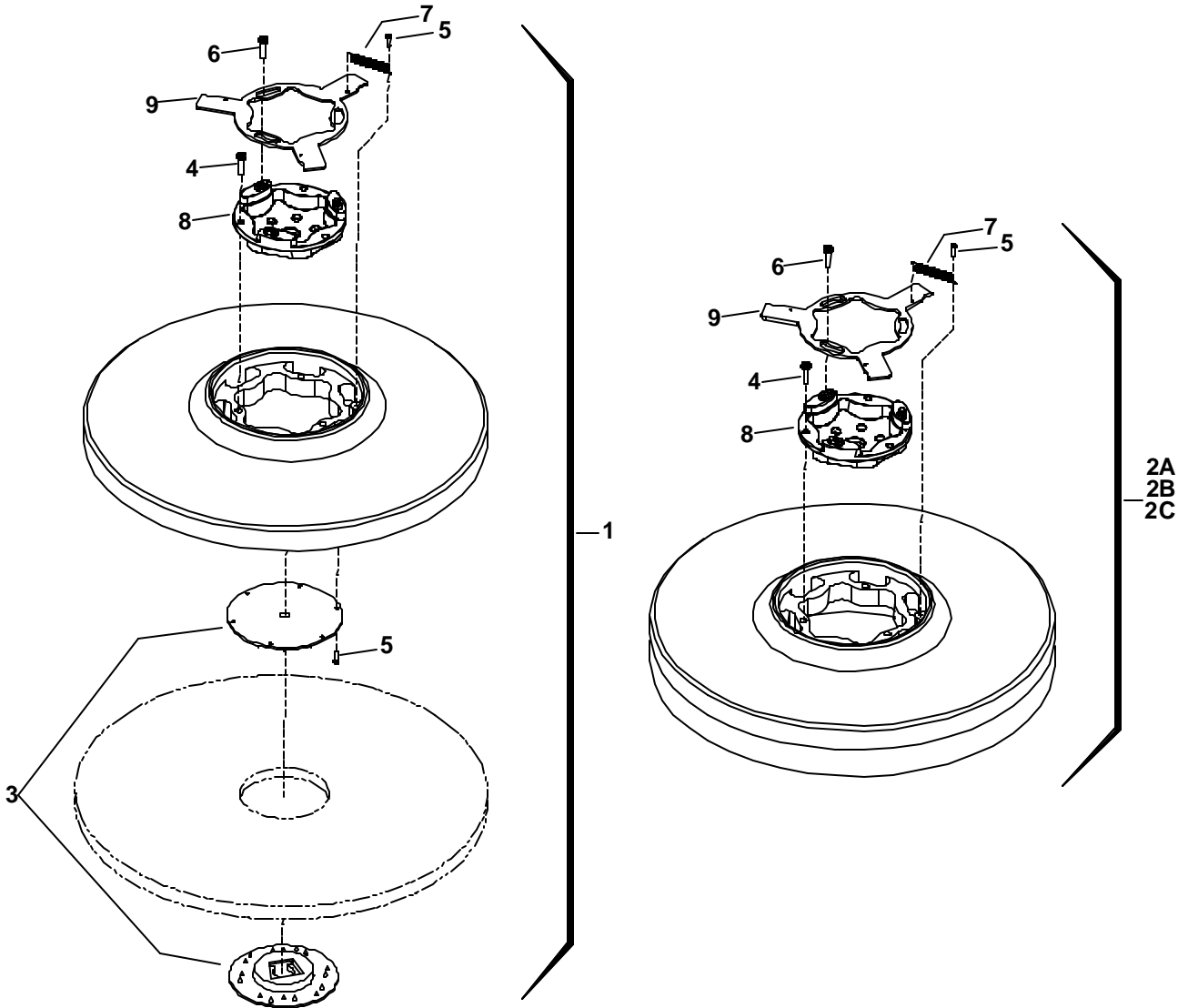
REF	PART NO.	QTY	DESCRIPTION	SERIAL NO. FROM	NOTES:
1	02400	2	PAD DRIVER, 12" SD		
2A	02401	2	BRUSH, 12" POLYPROPYLENE SD		
2B	02402	2	BRUSH, 12" NYLON SD		
2C	02404	2	BRUSH, 12" MILD GRIT SD		
2D	02405	2	BRUSH, 12" SUPER AGG SD		
3	51284	1	LOCK, PAD CENTER SNAP, TWO STEP		
4	70695	3	SCR, 12-24 X 1.0 PPHMS SS		
5	70694	4	SCR, 8-32 X 3/4 PTHMS		
6	70696	3	SCR, 10-32 X 3/4 PTHMS		
7	73817	1	SPRING, EXT .31 D X 2.0 L X .03 W SS		
8	730011	1	SOCKET, DRIVE BRUSH		
9	62852	1	PLATE, BRUSH RELEASE		

# SCRUB BRUSH/PAD DRIVER GROUP (HEX DRIVE)-26 IN



REF	PART NO.	QTY	DESCRIPTION	SERIAL NO. FROM	NOTES:
1	02390	2	PAD DRIVER, 13" HEX		
2A	02387	2	BRUSH, 13" POLYPROPYLENE HEX		
2B	02388	2	BRUSH, 13" NYLON HEX		
2C	02389	2	BRUSH, 13" MILD GRIT HEX		
3	51284	1	LOCK, PAD CENTER SNAP, TWO STEP		
4	70682	6	SCR, 1/4-20 X 5/8 PPHTC SS		
5	70576	4	SCR, #8 X 1/2 PPH T/S SS		
6	70682	3	SCR, 1/4-20 X 5/8 PPHTC SS		
7	73817	1	SPRING, EXT .31 D X 2.0 L X .03 W SS		
8	73861	1	CLUTCH, HEX DRIVE		
9	81471	1	PLATE, BRUSH RELEASE		
10	87013	3	WASHER, 1/4 ID X 5/8 OD SS		

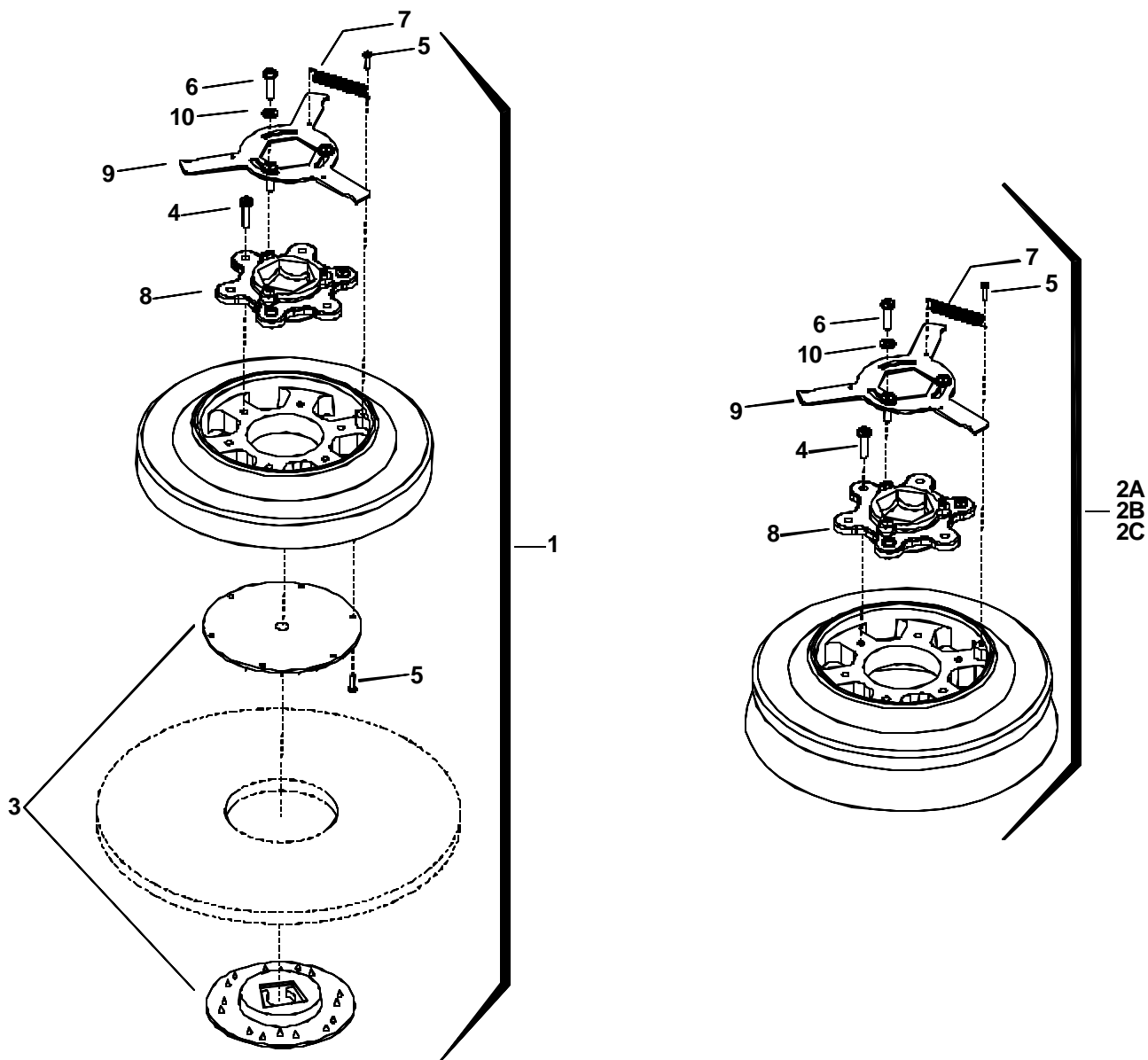
# SCRUB BRUSH/PAD DRIVER GROUP (STAR DRIVE)-26 IN



REF	PART NO.	QTY	DESCRIPTION	SERIAL NO. FROM	NOTES:
1	02406	2	PAD DRIVER, 13" SD		
2A	02407	2	BRUSH, 13" POLYPROPYLENE SD		
2B	02408	2	BRUSH, 13" NYLON SD		
2C	02410	2	BRUSH, 13" MILD GRIT SD		
3	51284	1	LOCK, PAD CENTER SNAP, TWO STEP		
4	70695	3	SCR, 12-24 X 1.0 PPHMS SS		
5	70694	4	SCR, 8-32 X 3/4 PTHMS		
6	70696	3	SCR, 10-32 X 3/4 PTHMS		
7	73817	1	SPRING, EX .31 D X 2.0 L X .03 W SS		
8	730011	1	SOCKET, DRIVE BRUSH		
9	62852	1	PLATE, BRUSH RELEASE		

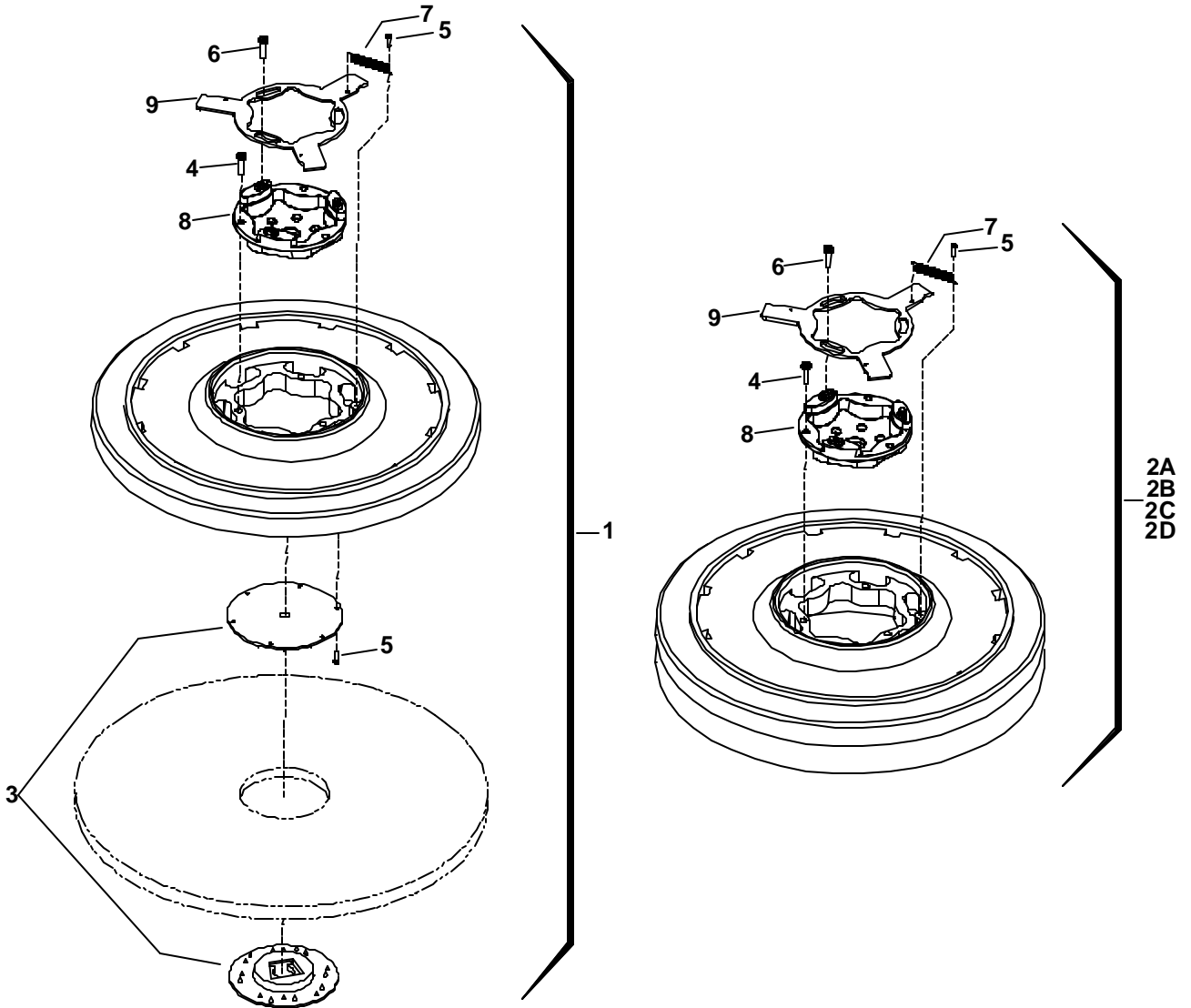


# SCRUB BRUSH/PAD DRIVER GROUP (HEX DRIVE)-28 IN



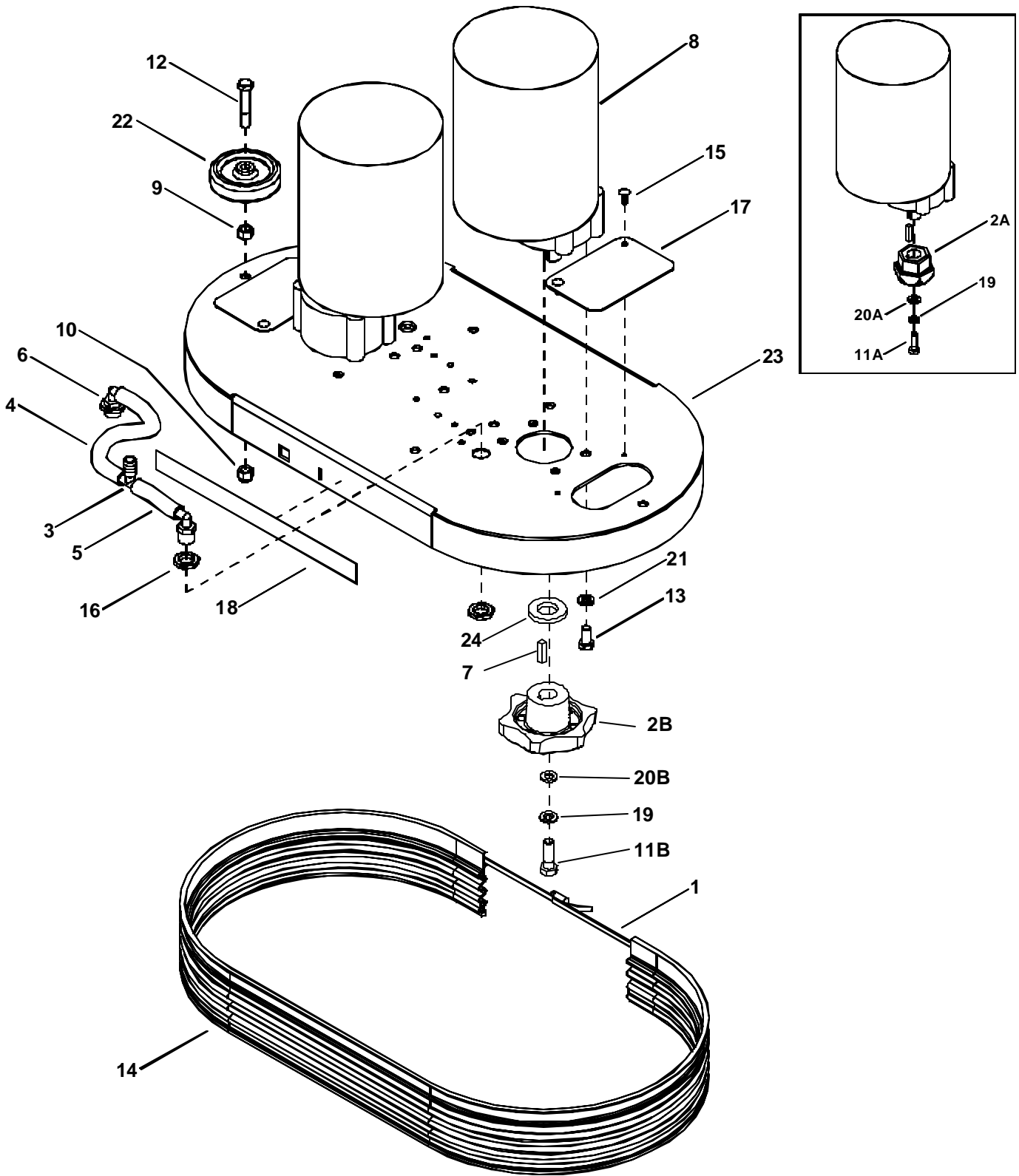
REF	PART NO.	QTY	DESCRIPTION	SERIAL NO. FROM	NOTES:
1	02337	2	PAD DRIVER, 14" HEX		
2A	02344	2	BRUSH, 14" POLYPROPYLENE HEX		
2B	02345	2	BRUSH, 14" NYLON HEX		
2C	02346	2	BRUSH, 14" MILD GRIT HEX		
3	51284	1	LOCK, PAD CENTER SNAP, TWO STEP		
4	70682	6	SCR, 1/4-20 X 5/8 PPHTC SS		
5	70576	4	SCR, #8 X 1/2 PPH T/S SS		
6	70682	3	SCR, 1/4-20 X 5/8 PPHTC SS		
7	73817	1	SPRING, EXT .31 D X 2.0 L X .03 W SS		
8	73861	1	CLUTCH, HEX DRIVE		
9	81471	1	PLATE, BRUSH RELEASE		
10	87013	3	WASHER, 1/4 ID X 5/8 OD SS		

# SCRUB BRUSH/PAD DRIVER GROUP (STAR DRIVE)-28 IN



REF	PART NO.	QTY	DESCRIPTION	SERIAL NO. FROM	NOTES:
1	02412	2	PAD DRIVER, 14" SD		
2A	02413	2	BRUSH, 14" POLYPROPYLENE SD		
2B	02414	2	BRUSH, 14" NYLON SD		
2C	02416	2	BRUSH, 14" MILD GRIT SD		
2D	02417	2	BRUSH, 14" SUPER AGG SD		
3	51284	1	LOCK, PAD CENTER SNAP, TWO STEP		
4	70695	3	SCR, 12-24 X 1.0 PPHMS SS		
5	70694	4	SCR, 8-32 X 3/4 PTHMS		
6	70696	3	SCR, 10-32 X 3/4 PTHMS		
7	73817	1	SPRING, EXT .31 D X 2.0 L X .03 W SS		
8	730011	1	SOCKET, DRIVE BRUSH		
9	62852	1	PLATE, BRUSH RELEASE		

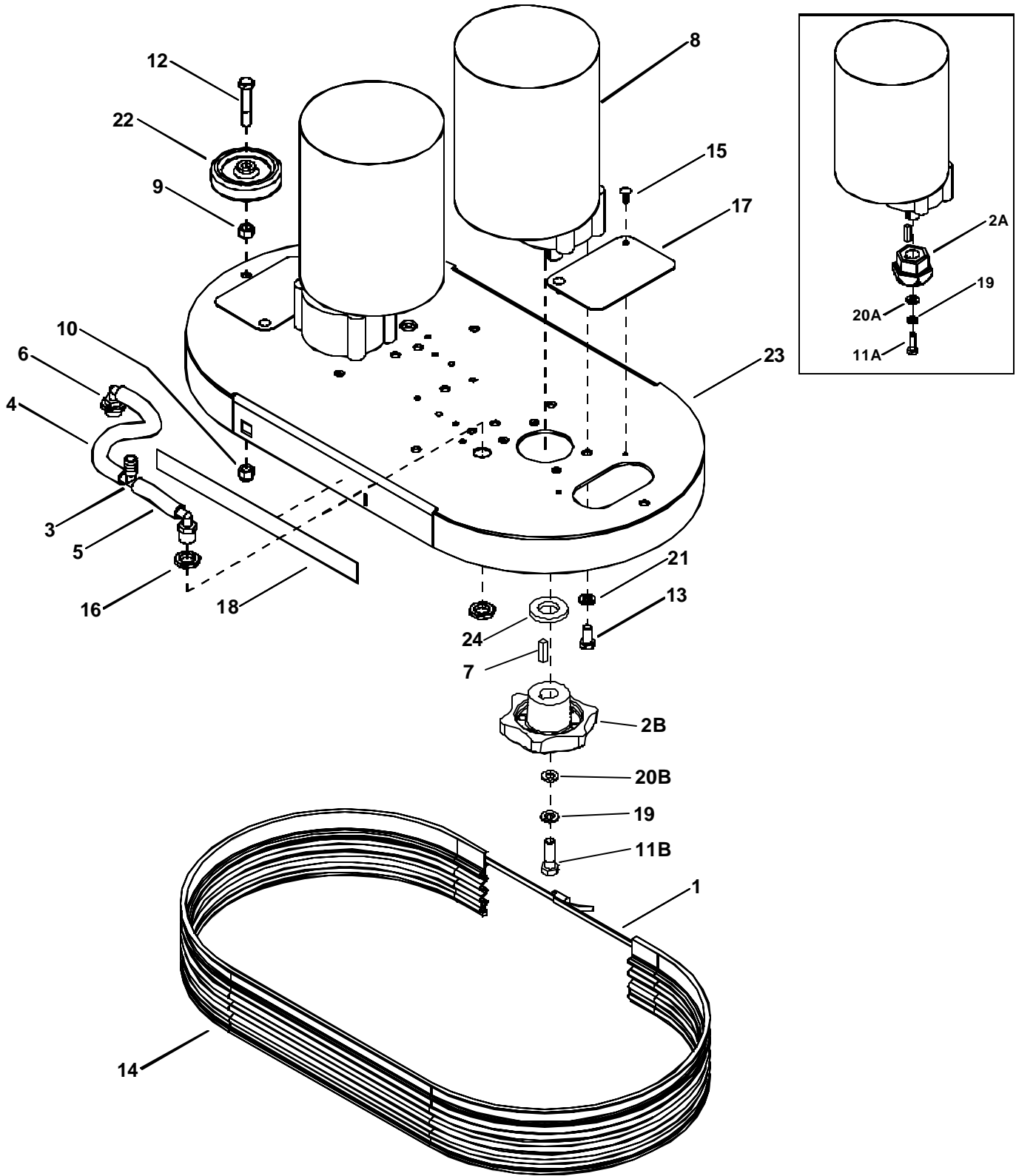
# SCRUBHEAD GROUP – 24 IN



## SCRUBHEAD GROUP – 24 IN

REF	PART NO.	QTY	DESCRIPTION	SERIAL NO. FROM	NOTES:
1	20077	1	CLAMP, L2000D/22 WORM #HS356		
2A	29119	2	DRIVER, BRUSH HEX		
2B	29220	2	DRIVER, BRUSH SD	1000042127	
3	34327	1	FITTING, 1/2 X 3/8 X 3/8 RED. TEE		
4	39053	1	HOSE, 3/8 NYLOBRAID X 7.0"		
5	39486	1	HOSE, 3/8 NYLOBRAID X 2"		
6	40043	2	HOSEBARB, 3/8 MPT X 3/8 HOSE 90		
7	48040	2	KEY, 1/4 SQ X 1.00		
8	53630	2	MOTOR ASM, 24VDC 200 RPM GEAR		
-	14695	-	BRUSH SET, BRUSH MOTOR IMPRL		(NOT SHOWN)
-	140394	-	BRUSH SET,53185/630/632 WINDSR		(NOT SHOWN)
9	57111	1	NUT, 3/8-16 HEX		
10	57119	1	NUT, 3/8-16 HEX NYLOCK		
11A	70083	2	SCR, 5/16-18 X 1.00 HHCS SS		
11B	70673	2	SCR, 5/16-18 X 1.25 HHCS SS	1000042127	
12	70385	1	SCR, 3/8-16 X 2.00 HHCS GR5		
13	70507	8	SCR, 3/8-16 X 3/4 HHCS GR5		
14	73790	1	SKIRT, SHROUD 3.25 X 58.0 L		
15	80805	4	CLIP, TREE .19 HOLE FLAT HEAD		
16	81380	4	NUT, SEALED BULKHEAD		
17	81898	2	COVER, BRUSH RELEASE		
18	82923	1	PAD, ANTI SLIP 1.00 X 12.0 L		
19	87083	2	WASHER, 5/16 SPLIT		
20A	87142	2	WASHER, .34 X .69 FLAT		
20B	87212	2	WASHER, .344 ID X 1.13 OD X .09 T	1000042127	
21	87163	8	WASHER, 3/8 SPLIT		
22	89059	1	WHEEL, PT20 SQUEEGEE		
23	89187	1	WELDMENT, SCRUB HEAD 24IN		
24	87213	2	WASHER, .78 ID X 1.63 OD X .25 T	1000042127	

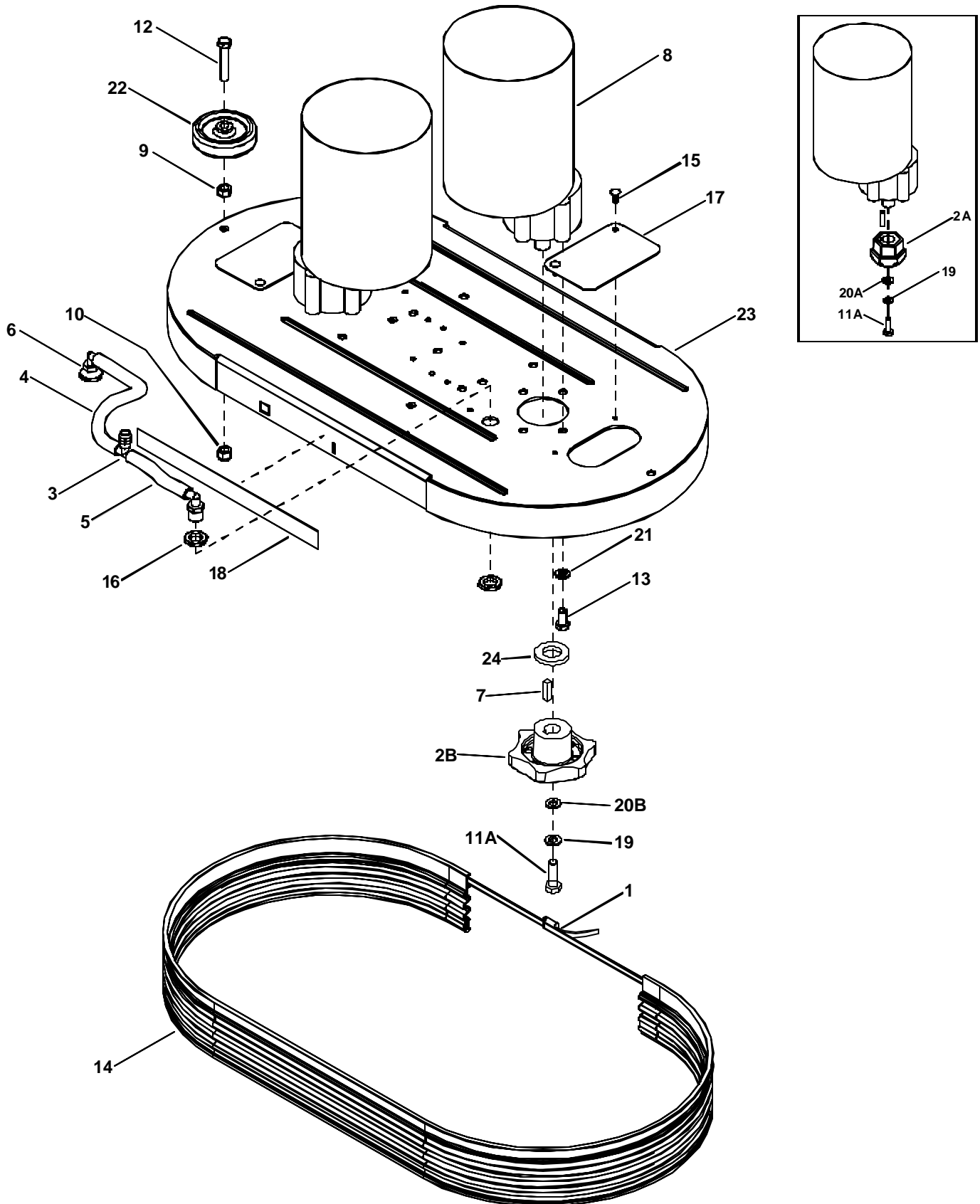
# SCRUBHEAD GROUP – 26 IN



## SCRUBHEAD GROUP – 26 IN

REF	PART NO.	QTY	DESCRIPTION	SERIAL NO. FROM	NOTES:
1	20076	1	CLAMP, WORM GEAR .5WX24 #390		
2A	29119	2	DRIVER, BRUSH HEX		
2B	29220	2	DRIVER, BRUSH SD	*	
3	34327	1	FITTING, 1/2 X 3/8 X 3/8 RED. TEE		
4	39053	1	HOSE, 3/8 NYLOBRAID X 7.0"		
5	39477	1	HOSE, 3/8 NYLOBRAID X 3"		
6	40043	2	HOSEBARB, 3/8 MPT X 3/8 HOSE 90		
7	48040	2	KEY, 1/4 SQ X 1.00		
8	53630	2	MOTOR ASM, 24VDC 200 RPM GEAR		
-	14695	-	BRUSH SET, BRUSH MOTOR IMPRL		(NOT SHOWN)
-	140394	-	BRUSH SET,53185/630/632 WINDSR		(NOT SHOWN)
9	57111	1	NUT, 3/8-16 HEX		
10	57119	1	NUT, 3/8-16 HEX NYLOCK		
11A	70083	2	SCR, 5/16-18 X 1.00 HHCS SS		
11B	70673	2	SCR, 5/16-18 X 1.25 HHCS SS	*	
12	70385	1	SCR, 3/8-16 X 2.00 HHCS GR5		
13	70507	8	SCR, 3/8-16 X 3/4 HHCS GR5		
14	73959	1	SKIRT, SHROUD 3.25 X 62.0 L		
15	80805	4	CLIP, TREE .19 HOLE FLAT HEAD		
16	81380	4	NUT, SEALED BULKHEAD		
17	81898	2	COVER, BRUSH RELEASE		
18	82923	1	PAD, ANTI SLIP 1.00 X 12.0 L		
19	87083	2	WASHER, 5/16 SPLIT		
20A	87142	2	WASHER, .34 X .69 FLAT		
20B	87212	2	WASHER, .344 ID X 1.13 OD X .09 T	*	
21	87163	8	WASHER, 3/8 SPLIT		
22	89059	1	WHEEL, SQUEEGEE		
23	89195	1	WELDMENT, SCRUB HEAD 26IN		
24	87213	2	WASHER, .78 ID X 1.63 OD X .25 T	*	

# SCRUBHEAD GROUP – 28 IN

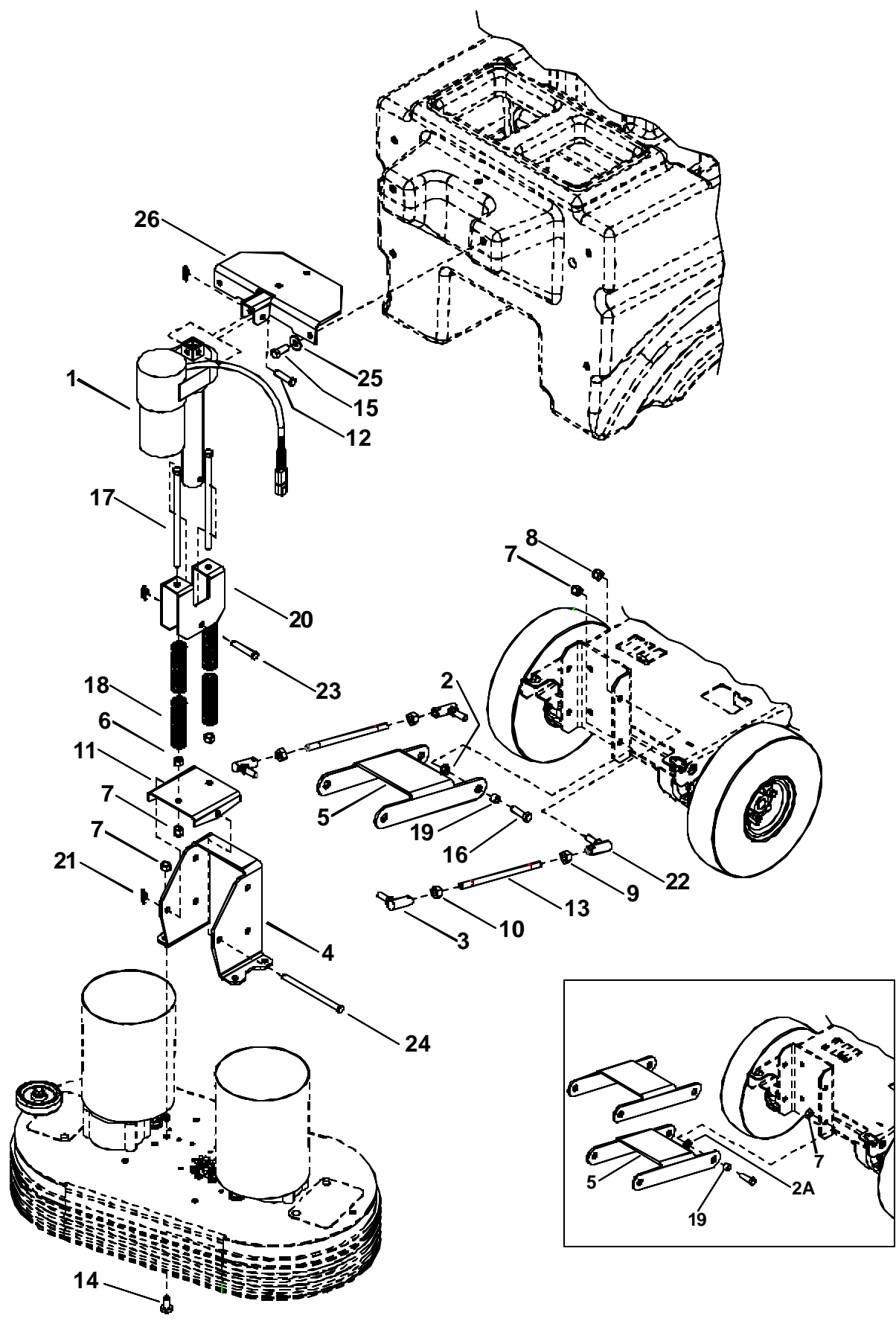


## SCRUBHEAD GROUP – 28 IN

REF	PART NO.	QTY	DESCRIPTION	SERIAL NO. FROM	NOTES:
1	20076	1	CLAMP, WORM GEAR .5WX24 #390		
2A	29119	2	DRIVER, BRUSH HEX		
2B	29220	2	DRIVER, BRUSH SD	*	
3	34327	1	FITTING, 1/2 X 3/8 X 3/8 RED. TEE		
4	39053	1	HOSE, 3/8 NYLOBRAID X 7.0"		
5	39452	1	HOSE, 3/8 NYLOBRAID X 5-1/2"		
6	40043	2	HOSEBARB, 3/8 MPT X 3/8 HOSE 90		
7	48040	2	KEY, 1/4 SQ X 1.00		
8	53630	2	MOTOR ASM, 24VDC 200 RPM GEAR		
-	14695	-	BRUSH SET, BRUSH MOTOR IMPRL		(NOT SHOWN)
-	140394	-	BRUSH SET,53185/630/632		(NOT SHOWN)
9	57111	1	NUT, 3/8-16 HEX		
10	57119	1	NUT, 3/8-16 HEX NYLOCK		
11A	70083	2	SCR, 5/16-18 X 1.00 HHCS SS		
11B	70673	2	SCR, 5/16-18 X 1.25 HHCS SS	*	
12	70385	1	SCR, 3/8-16 X 2.00 HHCS GR5		
13	70507	8	SCR, 3/8-16 X 3/4 HHCS GR5		
14	73889	1	SKIRT, SHROUD 3.25 X 65.0 L		
15	80805	4	CLIP, TREE .19 HOLE FLAT HEAD		
16	81380	4	NUT, SEALED BULKHEAD		
17	81898	2	COVER, BRUSH RELEASE		
18	82923	1	PAD, ANTI SLIP 1.00 X 12.0 L		
19	87083	2	WASHER, 5/16 SPLIT		
20A	87142	2	WASHER, .34 X .69 FLAT		
20B	87212	2	WASHER, .344 ID X 1.13 OD X .09 T	*	
21	87163	8	WASHER, 3/8 SPLIT		
22	89059	1	WHEEL, SQUEEGEE		
23	89193	1	WELDMENT, SCRUB HEAD 28IN		
24	87213	2	WASHER, .78 ID X 1.63 OD X .09 T	*	



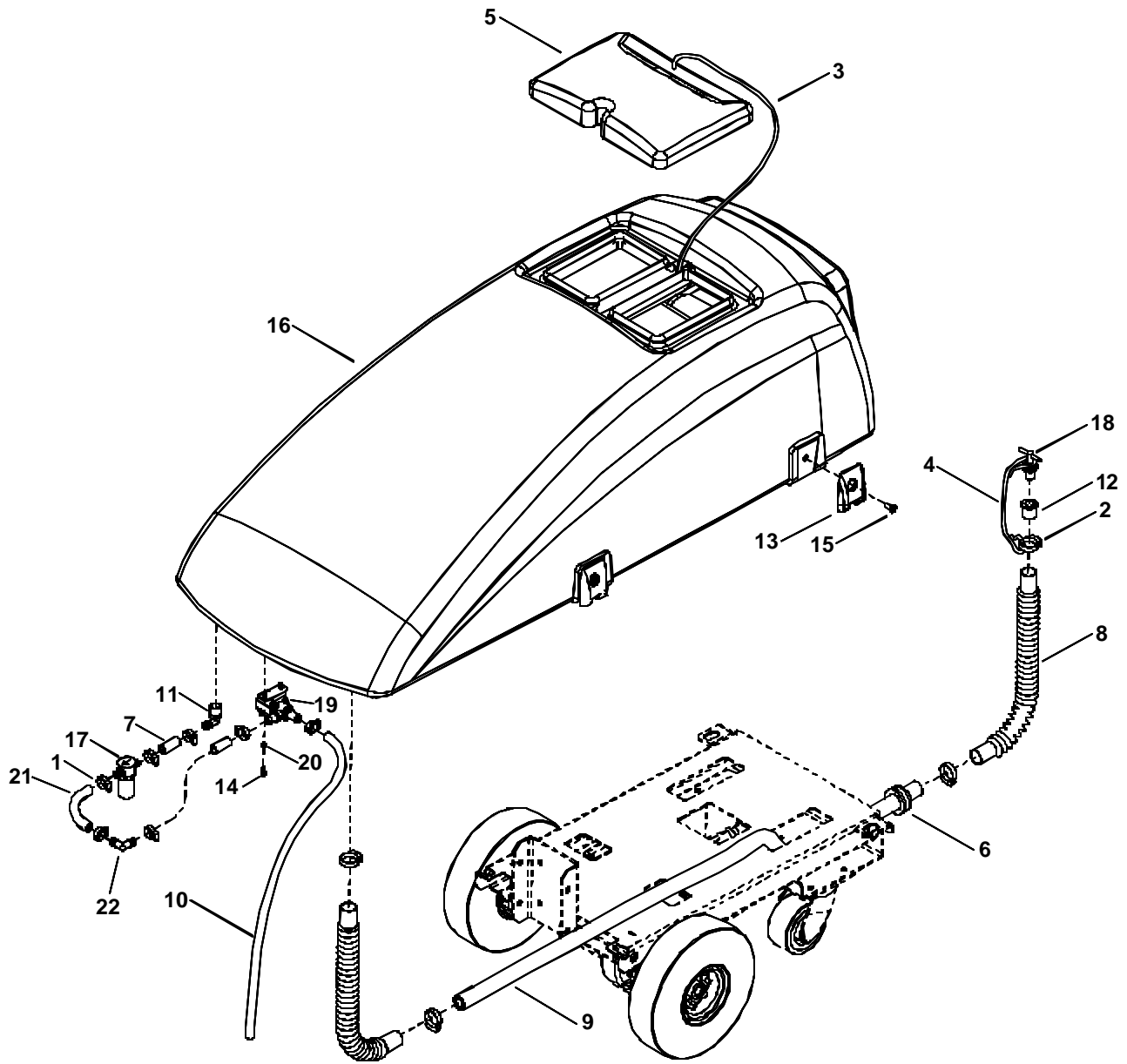
# SCRUBHEAD LIFT GROUP - DISK



## SCRUBHEAD LIFT GROUP - DISK

REF	PART NO.	QTY	DESCRIPTION	SERIAL NO. FROM	NOTES:
1	05124	1	ACTUATOR, 36 VDC 5.0 STROKE		
2	81324	4	BEARING, 1/2 ID X 11/32L NYLON	1000062420	
2A	09130	8	BEARING, 1/2 NYLINER 7/32		
3	140353	2	BALL JOINT ASSY, 3/8-24 LH	1000039258	
4	140372	1	BRKT, SCRUB HEAD MOUNT		
5	27856	1	LINKAGE, SKRUB DECK	1000039258	QUANTITY WAS 2
6	57111	2	NUT, 3/8-16 HEX		
7	57119	10	NUT, 3/8-16 HEX NYLOCK		QUANTITY WAS 14
8	57216	4	NUT, 3/8-24 HEX NYLOCK	1000039258	
9	57217	2	NUT, 3/8-24 HEX JAM PLTD	1000039258	
10	57263	2	NUT, 3/8-24 UNF LH	1000039258	
11	62676	1	PLATE, SPRING SUPPORT		
12	66232	1	PIN, CLEVIS 3/8 X 1.50		
13	67415	2	ROD, SCRUB LIFT	1000039258	
14	70266	4	SCR, 3/8-16 X 1" HHCSGR5PLTDL		
15	70305	3	SCR, 5/16-18 X 3/4 HHCSGR5PLTDL		
16	70377	8	SCR, 3/8-16 X 1.25 HHCS GR5		
17	70574	2	SCR, 3/8-16 X 7.5 HHCS GR5 PLTD		
18	73883	1	SPRING, COMP .97OD X 3.5 L		
19	80102	4	SPACER, .500 OD X .391 ID X .400		QUANTITY WAS 8
20	80459	1	PLATE, SPRING RETAINER		
21	80606	3	COTTER, 3/8" RING	1000039258	
22	80697	2	BALL JOINT ASY, 3/8-24 RH	1000039258	
23	81406	1	PIN, CLEVIS 3/8" X 2"		
24	82060	1	PIN, CLEVIS 3/8 X 5.25		
25	87029	3	WASHER, 5/16 FLAT SS		
26	89204	1	WELDMENT, ACTUATOR BRKT		

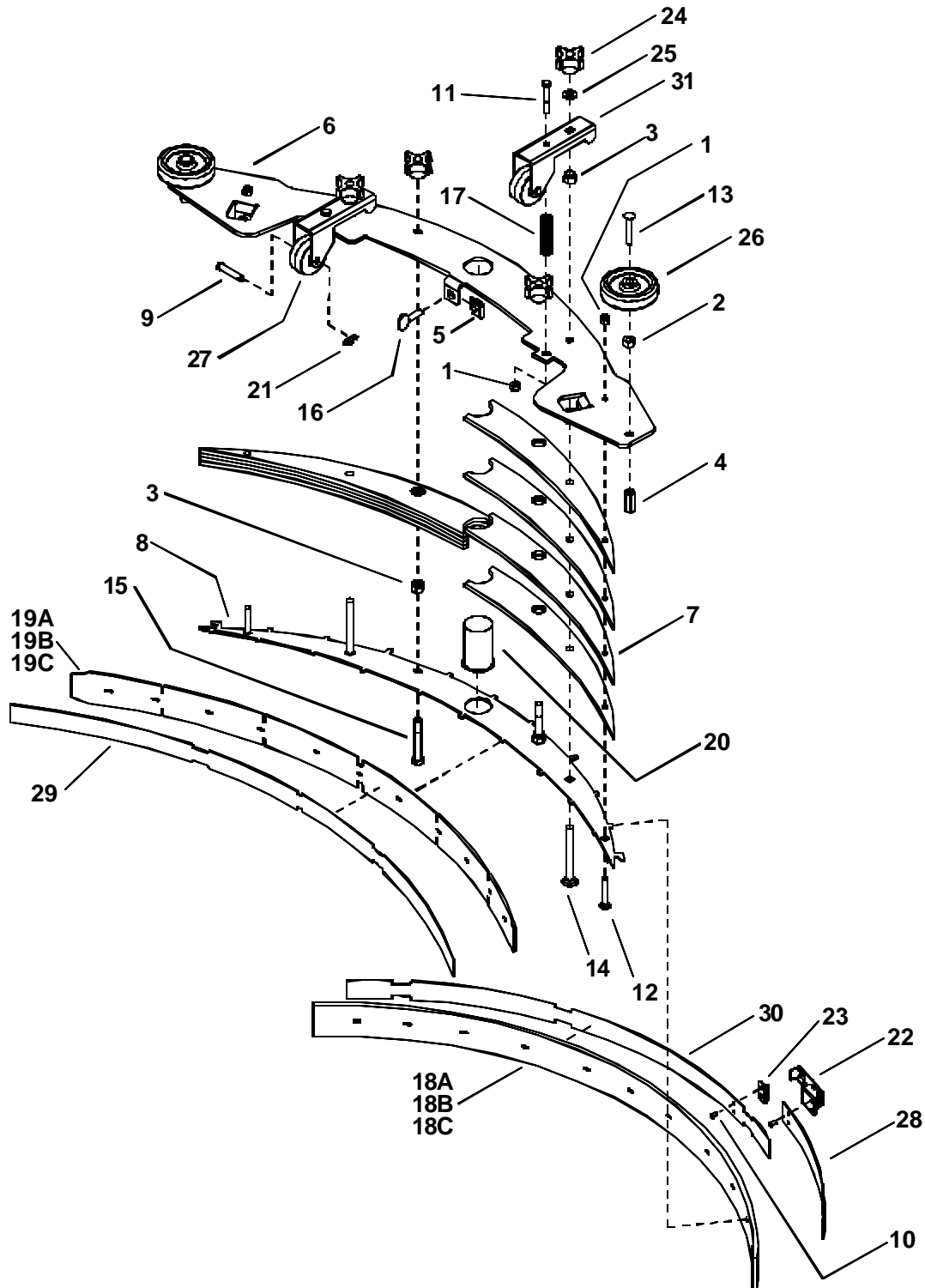
# SOLUTION TANK GROUP



## SOLUTION TANK GROUP

REF	PART NO.	QTY	DESCRIPTION	SERIAL NO. FROM	NOTES:
1	20042	6	CLAMP, 3/8 HOSE (D-SLOT)		
2	20090	4	CLAMP, 1.0 NYLON RACHET		
3	27425	1	CORD, SOLUTION COVER		
4	27670	1	CORD, DRAIN PLUG		
5	27772	1	COVER, SOLUTION TANK		
6	36191	1	GROMMET 1.00 ID 3/16 GRIP		
7	39498	2	HOSE, 1/2" NYLOBRAID X 1 1/2"		
8	39505	2	HOSE, 1.0 X 18.0 DRAIN		
9	39514	1	HOSE, 3/4 ID X .12W X 32" CLR		
10	39521	1	HOSE, 1/2 NYLOBRAID X 36"		
11	40039	1	HOSEBARB, 1/2MPT X 1/2 HOSE 90		
12	40076	1	SLEEVE .63 ID X 1.0 OD		
13	41333	2	HINGE, SCRUBBER TANK		
14	70088	2	SCR, 10-32 X 1/2 PPHMS SS		
15	70632	2	SCR, 5/16-18 X 3/4 FHSCS BLKZC		
16	75245	1	TANK, SOLUTION		
17	73999	1	STRAINER, 1/2 HOSE 40 MESH		
18	82267	1	PLUG, 5/8" DRAIN HOSE		
19	84141	1	VALVE, 24VDC SOL.1/2"HOSEBARB		
20	87095	2	WASHER, #10 FLAT PLTD		
21	39549	1	HOSE, 1/2" WIRE BOUND X 5"		
22	40082	1	HOSEBARB, 1/2 X 90D		

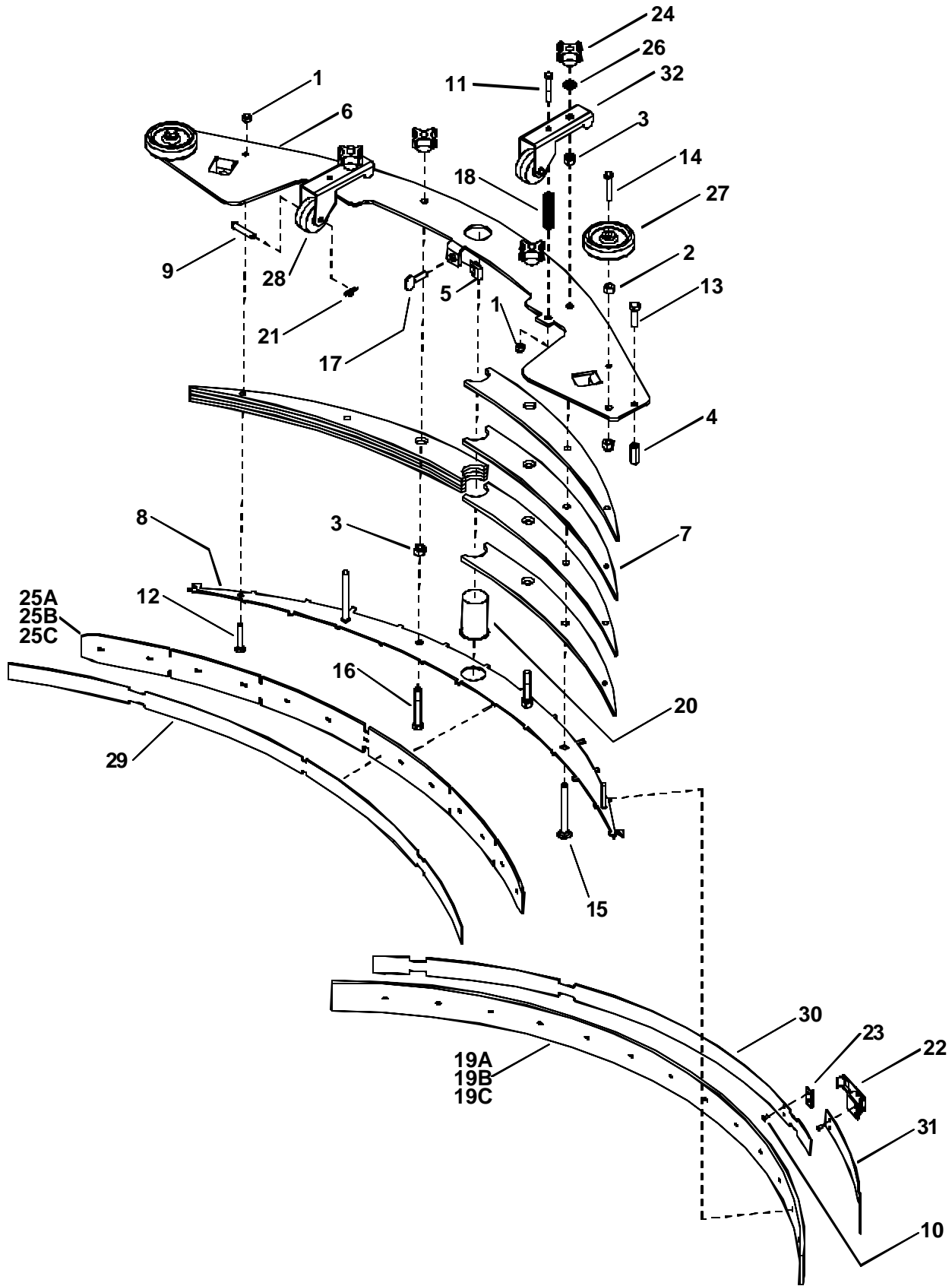
# SQUEEGEE GROUP – 24 IN & 26 IN SCRUBHEADS



## SQUEEGEE GROUP – 24 IN & 26 IN SCRUBHEADS

REF	PART NO.	QTY	DESCRIPTION	SERIAL NO. FROM	NOTES:
1	57047	4	NUT, 1/4-20 HEX NYLOCK		
2	57111	2	NUT, 3/8-16 HEX		
3	57119	4	NUT, 3/8-16 HEX NYLOCK		
4	57269	2	NUT, 3/8-16 HEX COUPLING SS		
5	57270	3	NUT, 5/16-18 CAPTIVE "J" PLTD		
6	62814	1	PLATE, SQG RETAINER TOP		
7	62815	8	PLATE, SQG FILLER		
8	62816	1	PLATE, SQG BLADE RETAINER		
9	66276	2	PIN, CLEVIS 5/16 X 1.63		
10	67380	4	RIVET, 5/32 OD X 1/8 GRIP		
11	70105	2	SCR, 1/4-20 X 1.75 HHCS		
12	70291	2	SCR, 1/4-20 X 1.5 ELEVATOR		
13	70385	2	SCR, 3/8-16 X 2.0 HHCS GR5 PLT		
14	70678	2	SCR, 3/8-16 X 3.5 CARRIAGE SS		
15	70679	2	SCR, 3/8-16 X 2.5 TAP		
16	70680	3	SCR, 5/16-18X1 THUMB SS TYPE P		
17	73576	2	SPRING, 2 X .6 OD COMPRESSION		
18A	73976	1	SQUEEGEE, REAR BLADE LINATEX		(STANDARD)
18B	73977	-	SQUEEGEE, REAR BLADE (TILE)		(OPTION)
18C	73978	-	SQUEEGEE, REAR BLADE (BUTTONS)		(OPTION)
19A	73894	1	SQGE BLADE, FRONT LINATEX 35"		(STANDARD)
19B	73898	-	SQGE BLADE, FRONT (TILE) 35"		(OPTION)
19C	73896	-	SQGE BLADE, FRONT (BUTTONS) 35"		(OPTION)
20	78034	1	TUBE 1.5 OD X 2.5 VAC INTAKE		
21	80605	2	COTTER, 5/16 RING		
22	81488	1	LATCH, SQUEEGEE STRAP		
23	81489	1	STRIKER, SQUEEGEE STRAP REAR		
24	81535	4	KNOB, SQUEEGEE ADJ PLATE		
25	87030	2	WASHER, 3/8 X 3/4 NYL		
26	89059	2	WHEEL, SQUEEGEE BUMPER		
27	89197	2	WHEEL, 2 OD X .31 ID .875 W GRY		
28	140382	1	BAND, REAR SQUEEGEE		
29	140383	1	BAND, FRONT SQUEEGEE		
30	140384	1	BAND, REAR SQUEEGEE		
31	140385	2	BRKT, SQUEEGEE HGT ADJUSTMENT		

# SQUEEGEE GROUP-28 IN SCRUBHEAD

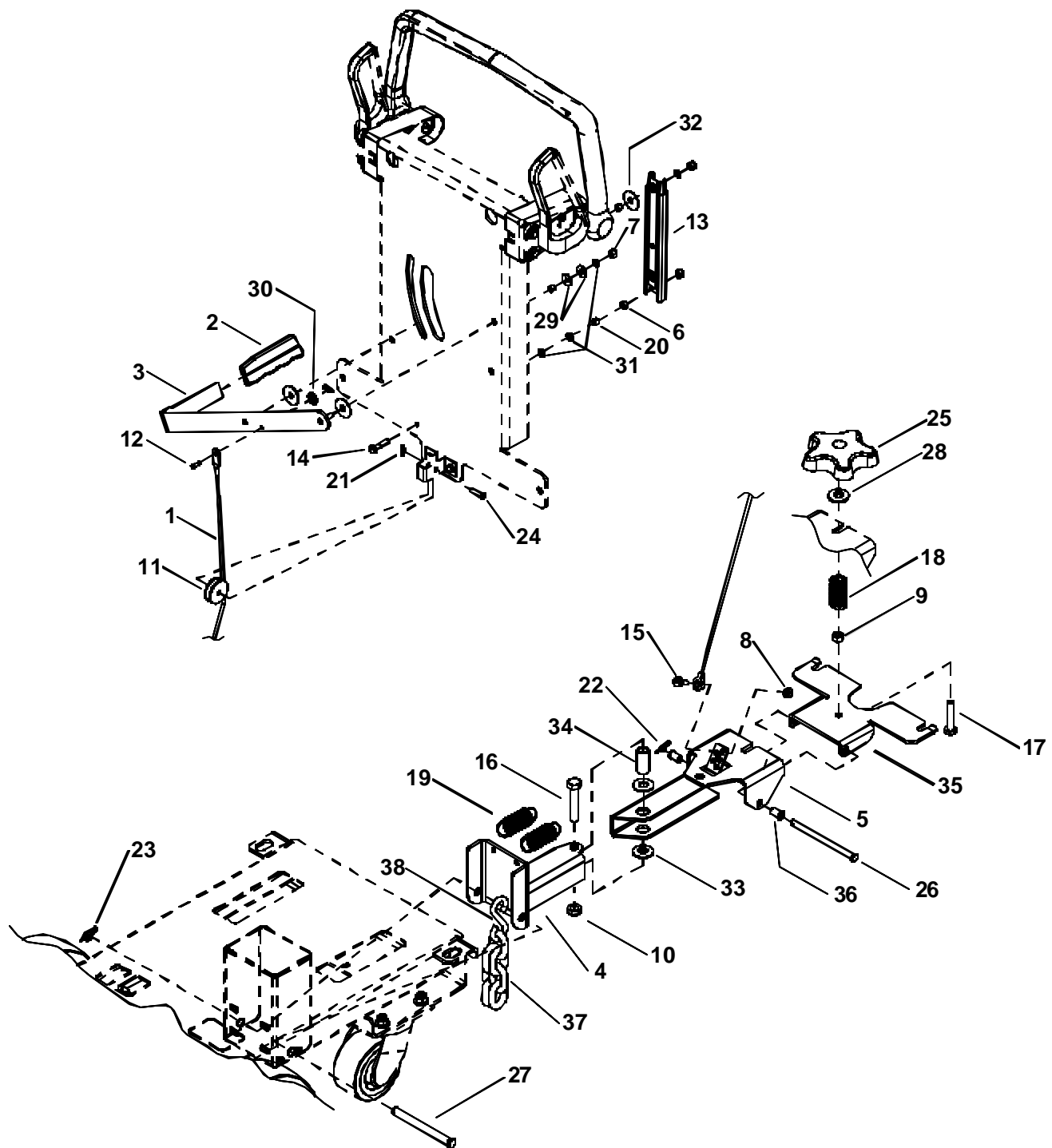


## SQUEEGEE GROUP – 28 IN SCRUBHEAD

REF	PART NO.	QTY	DESCRIPTION	SERIAL NO. FROM	NOTES:
1	57047	4	NUT, 1/4-20 HEX NYLOCK		
2	57111	2	NUT, 3/8-16 HEX		
3	57119	6	NUT, 3/8-16 HEX NYLOCK		
4	57269	2	NUT, 3/8-16 HEX COUPLING SS		
5	57270	3	NUT, 5/16-18 CAPTIVE "J" PLTD		
6	62811	1	PLATE, SQG RETAINER TOP		
7	62812	8	PLATE, SQUEEGEE FILLER		
8	62813	7	PLATE, SQG BLADE RETAINER		
9	66276	2	PIN, CLEVIS 5/16 X 1.625 LG		
10	67380	4	RIVET, 5/32 OF X 1/8 GRIP		
11	70105	2	SCR, 1/4-20 X 1.75 HHCS PLTD		
12	70291	2	SCR, 1/4-20 X 1.5 ELEVATOR		
13	70377	2	SCR, 3/8-16 X 1.25 HHCS GR5PLT		
14	70385	2	SCR, 3/8-16 X 2.0 HHCS GR5 PLT		
15	70678	2	SCR, 3/8-16X3.5 CARRIAGE PLTD		
16	70679	2	SCR, 3/8-16 X 2.5 TAP		
17	70680	3	SCR, 5/16-18X1 THUMB SS TYPE P		
18	73576	2	SPRING, COMP .60D X2.0L X.045W		
19A	73900	1	SQGE BLADE, REAR LINATEX 44"		(STANDARD)
19B	73902	-	SQGE BLADE, REAR (TILE) 44"		(OPTION)
19C	73901	-	SQGE BLADE, REAR (BUTTONS) 44"		(OPTION)
20	78034	1	TUBE, 1.5 OD X 2.5 VAC INTAKE		
21	80605	2	COTTER, 5/16" RING		
22	81488	1	LATCH, SQUEEGEE STRAP		
23	81489	1	STRIKER, SQUEEGEE STRAP REAR		
24	81535	4	KNOB, 3/8-16 4 PRONG		
25A	82528	1	SQUEEGEE, FRONT BLADE LINATEX		(STANDARD)
25B	82637	-	SQUEEGEE, FRONT BLADE (TILE)		(OPTION)
25C	82640	-	SQUEEGEE, FRONT BLADE (BUTTON)		(OPTION)
26	87030	2	WASHER, 3/8 ID X 3/4 OD NYLON		
27	89059	2	WHEEL, BUMPER		
28	89197	2	WHEEL, 2 OD X.31IDX.875W, GRY		
29	140380	1	BAND, SQUEEGEE FRONT		
30	140381	1	BAND, SQUEEGEE REAR		
31	140382	1	BAND, SQUEEGEE REAR (S)		
32	140385	2	BRKT, WHEEL MOUNT		



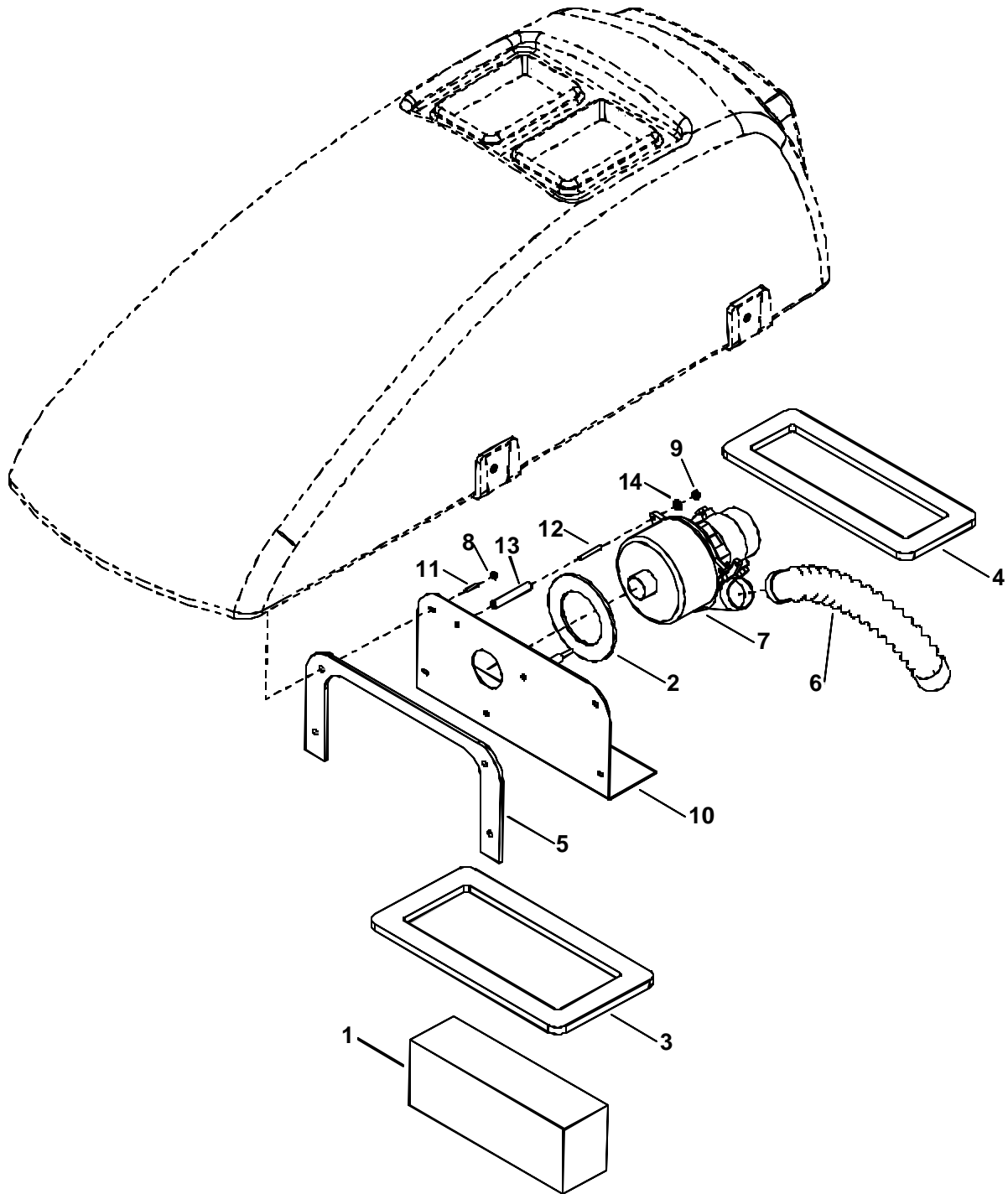
# SQUEEGEE LIFT GROUP



## SQUEEGEE LIFT GROUP

REF	PART NO.	QTY	DESCRIPTION	SERIAL NO. FROM	NOTES:
1	27794	1	CABLE, 23.70 X 1/8		
2	36133	1	GRIP, 3/16 X 1.0 FLAT BAR		
3	51289	1	LEVER, SQUEEGEE LIFT		
4	51322	1	LINKAGE, SQUEEGEE LIFT		
5	51323	1	LINKAGE, SQUEEGEE PIVOT		
6	57006	1	NUT, 1/4-20 HEX		
7	57047	3	NUT, 1/4-20 HEX NYLOCK		
8	57113	1	NUT, 5/16-18 HEX NYLOCK		
9	57119	1	NUT, 3/8-16 HEX NYLOCK		
10	57153	1	NUT, 1/2-13 X HEX NYLOCK THIN		
11	64096	1	PULLEY, 1.5 OD X .5 W X .25 B		
12	66191	1	PIN, CLEVIS 3/16" X 1/2" PLTD		
13	67423	1	RAIL RACHET		
14	70297	1	SCR, 1/4-20 X 1.5 HHMS		
15	70641	1	SHOULDER BOLT, 3/8OD X 3/8L SS		
16	70341	1	SCR, 1/2-13 X 2.5 HHCS GR5PLT		
17	70685	1	SCR, 3/8-16 X2.75 HHTB GR5 PLTD		
18	730006	1	SPRING, COMP 1.100DX2.0LX.148W		
19	73265	2	SPRING, EXT. .80D X 4.00L X .120W	1000037808	WAS 73979
20	78430	3	TUBE, .38 OD X .26 ID X .38 LG		
21	80604	2	COTTER, 1/4 RING		
22	80606	1	COTTER, 3/8 RING		
23	80607	1	COTTER, 1/2 RING		
24	80612	1	PIN, CLEVIS 1/4 X 1.0		
25	48077	1	KNOB, 3.50 ODX3/8-16 THRU HOLE		
26	82060	1	PIN, CLEVIS 3/8 X 5.25		
27	82322	1	PIN, CLEVIS 1/2 X 4.80		
28	87086	1	WASHER, M10 X 30 PLTD		
29	87030	2	WASHER, 3/8 ID X 3/4 OD NYLON		
30	87056	1	WASHER, M6 FLAT		
31	87135	4	WASHER, .26 ID X .50 OD		
32	87200	3	WASHER, .4 ID X 1.3 OD NYLON		
33	87201	2	WASHER, 0.781 ID FIBERGLIDE		
34	140293	1	SPACER, .75 OD X .50 ID X 1.50 L		
35	140379	1	BRACKET, SQUEEGEE MOUNT		
36	80815	2	BEARING, FLANGED PLASTIC		
37	80582	1	CHAIN, #1/0 7-LINKS GROUNDING		
38	73831	1	S-HOOK, 2"		

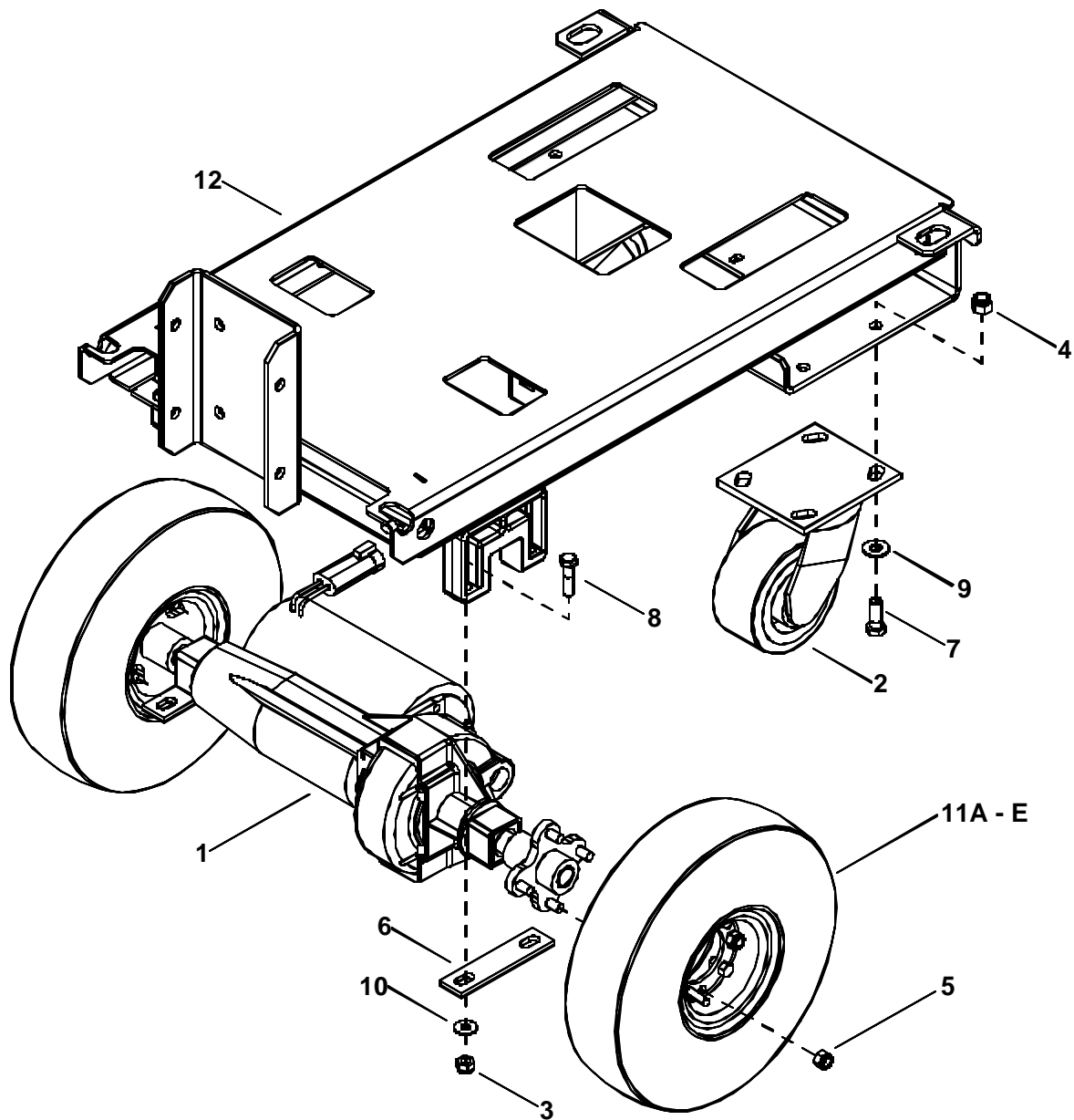
# VACUUM GROUP



**VACUUM GROUP**

REF	PART NO.	QTY	DESCRIPTION	SERIAL NO. FROM	NOTES:
1	34337	1	FILTER, SABER 24 VAC		
2	35122	1	GASKET, 230V C17EI/C20 VAC MOTOR		
3	35211	1	GASKET, 8.50 X 16.40 X .50T		
4	35212	1	GASKET, 6.30 X 16.1 C .50T		
5	35214	1	GASKET, VAC MOTOR		
6	39547	1	HOSE ASM, 1.5 BLK VAC X 21		
7	53631	1	VAC MOTOR ASM, 24VDC 3 STAGE		
-	14548	-	BRUSH SET, 24VDC 5.7 3ST VCMTR		(NOT SHOWN)
8	57104	4	NUT, 10-32 W/STAR WASHER PLTD		
9	57245	3	NUT, 1/4-20 HEX NYLOCK SS		
10	62805	1	PLATE, VAC MOUNT		
11	70607	4	SET SCR, #10-32 X 1.00 SS		
12	70638	3	SCR, 1/4-20 X 1.75 SSSCU		
13	73566	3	SPACER, 1/2 OD X 3.0 W/1/4-20 AL		
14	87013	3	WASHER, 1/4 ID X 5/8 OD SS		

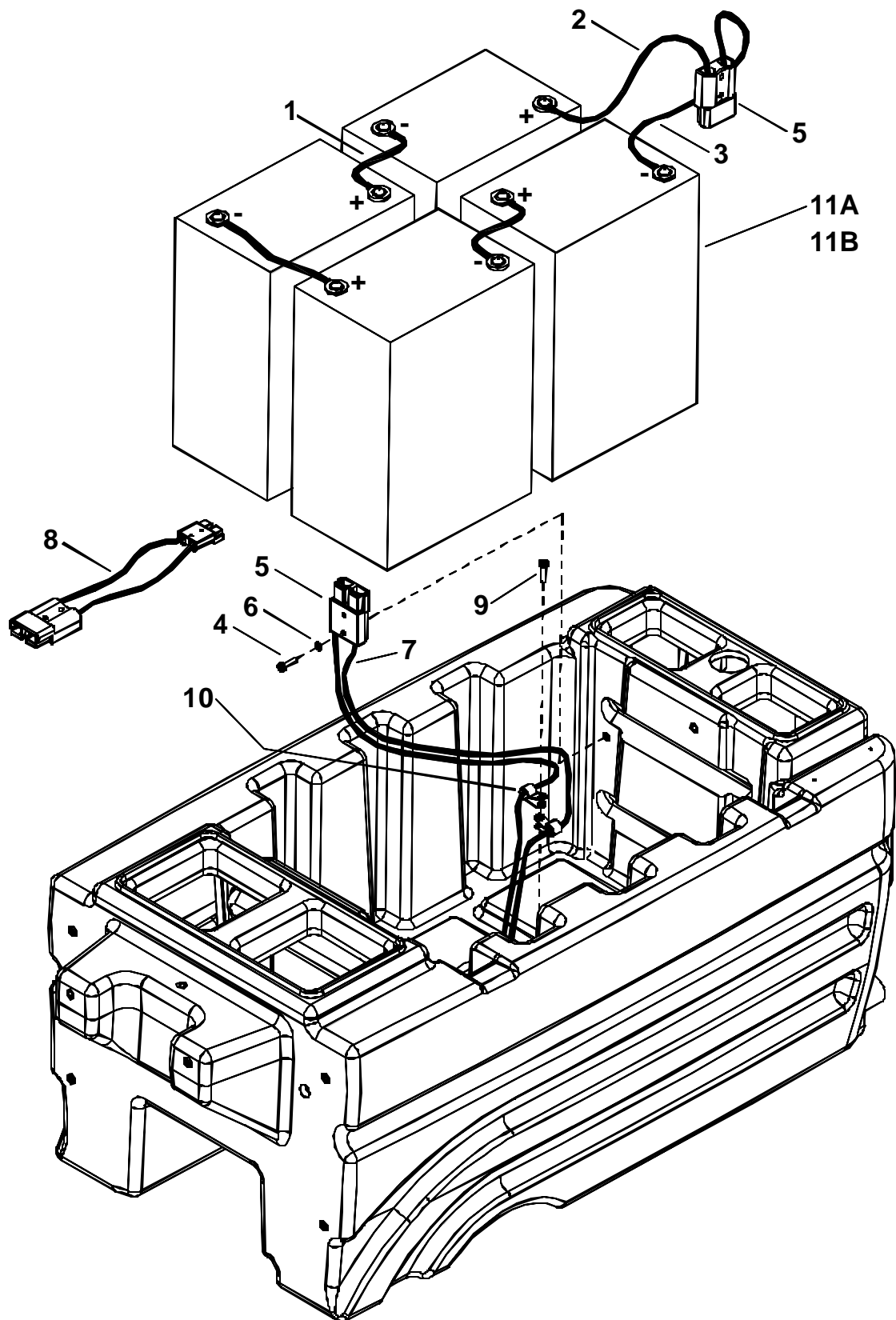
# WHEELS AND FRAME GROUP



## WHEELS AND FRAME GROUP

REF	PART NO.	QTY	DESCRIPTION	SERIAL NO. FROM	NOTES:
1	05128	1	AXLE, MOTOR DRIVE 24 VDC		
2	18041	2	CASTER, 4" DIA. X 2 X 3.56 R		
3	57113	4	NUT, 5/16-18 HEX NYLCK		
4	57119	8	NUT, 3/8-16 HEX NYLOCK		
5	57128	8	NUT, 5/16-24 HEX NYLOCK		
6	62714	2	PLATE, DRIVE AXLE		
7	70266	8	SCR, 3/8-16 X 1.00 HHCS GR5		
8	70325	4	SCR, 5/16-18 X 1.25 HHCS GR5		
9	87003	8	WASHER, 3/8 X 7/8 FLAT SS		
10	87029	4	WASHER, 5/16 FLAT SS		
11A	89155	2	WHEEL, 10" PNEU. NON-MARKING		(STANDARD)
-	78414	-	TUBE, 10" TIRE		(NOT SHOWN)
11B	89175	-	WHEEL ASY, 10IN PNEU, BLACK		(OPTION)
-	78414	-	TUBE, 10" TIRE		(NOT SHOWN)
11C	830748	-	WHEEL ASM, 10" SOLID SPCL SCBR		
11D	89211	-	WHEEL ASM, 10" FMFL N-MARKING		
11E	89212	-	WHEEL ASM, 10" FMFL BLK KNOBBY		
12	89190	1	WELDMENT, FRAME		

# WIRING GROUP – BATTERY & CABLES

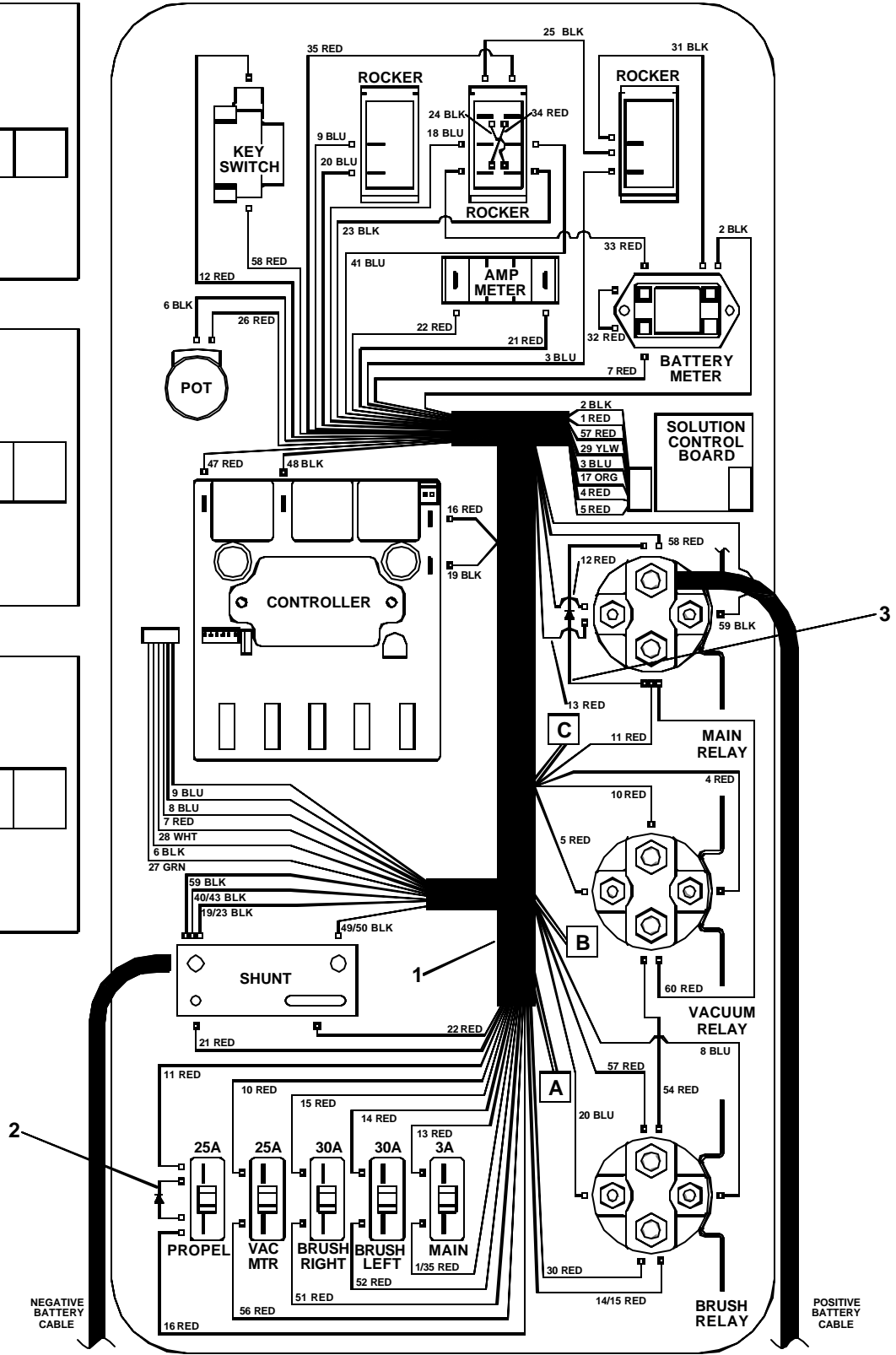
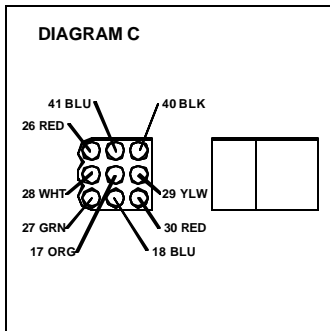
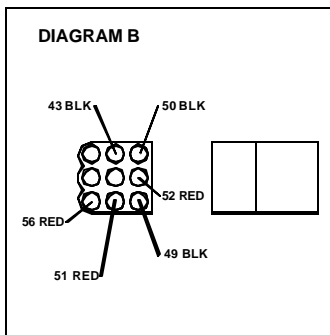
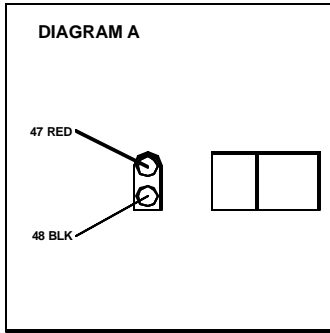


## WIRING GROUP – BATTERY & CABLES

REF	PART NO.	QTY	DESCRIPTION	SERIAL NO. FROM	NOTES:
1	23125	3	WIRE, 4 X 15 B CLAMP		
2	23190	1	CABLE, 4 X 27 RED		
3	23191	1	CABLE, 4 X 27 BLK		
4	70010	2	SCR, 1/4-20 X 1.5 HHCS SS		
5	82803	2	CONNECTOR, RED 24V		
6	87025	2	WASHER, 1/4 LOCK EXT STAR SS		
7	81366	2	CABLE, ELECTRICAL 4GA X 82.5		
8	880209	1	CHARGER ADAPTER, 24V, C175 TO C50		OPTION
9	70114	1	SCR, #10 X 3/4 PPHST TYPE B		
10	20054	2	CLAMP, 3/8 NYLON UL/CSA		
11A	10009	REF	BATTERY, 6V / 305 AH		4 REQ'D
11B	10006	REF	BATTERY, 6V / 250 AH		4 REQ'D
12A	02453	REF	CHRGR, 24V, 25A, 115V, C175		NOT SHOWN
12B	02454	REF	CHRGR, 24V, 18A, 115V, C175		NOT SHOWN



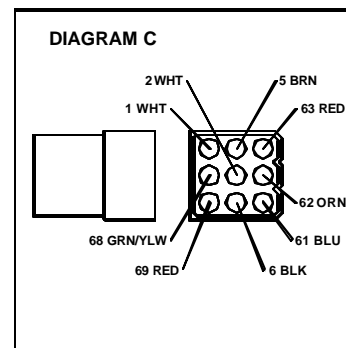
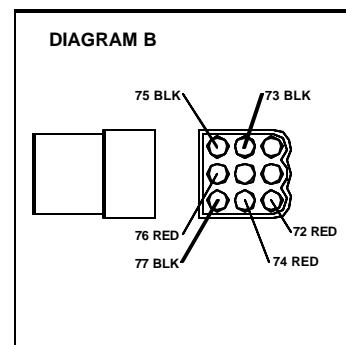
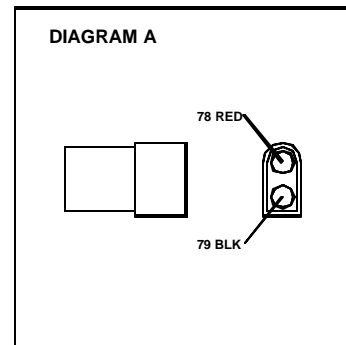
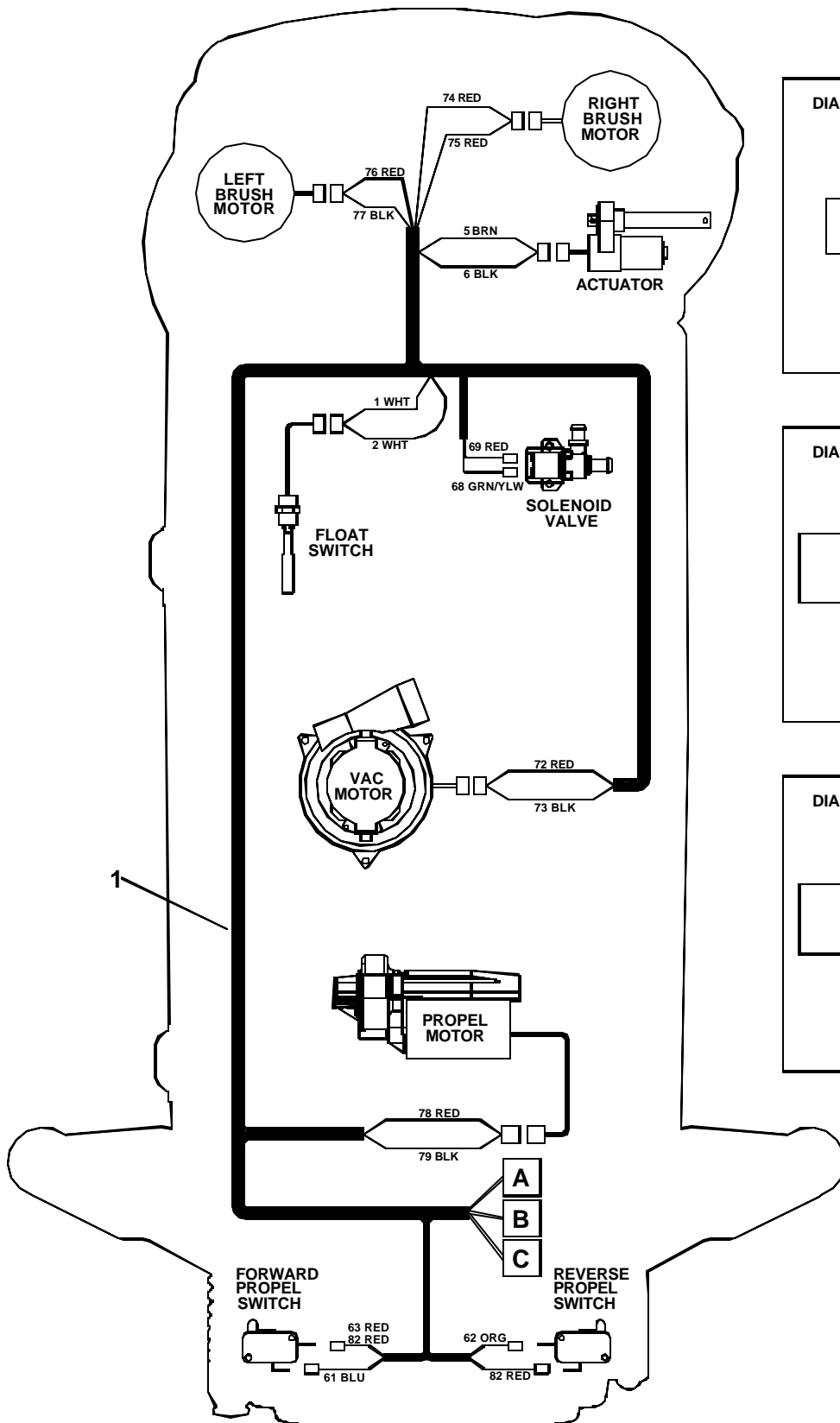
# WIRING GROUP – CONTROL PANEL



## WIRING GROUP – CONTROL HARNESS

REF	PART NO.	QTY	DESCRIPTION	SERIAL NO. FROM	NOTES:
1	41360	1	HARNESS, PANEL		
2	29204	1	DIODE ASM, 76008 X 76008		
3	29215	1	DIODE ASM, 76075 X 76075		

# WIRING GROUP – MAIN HARNESS



**WIRING GROUP – MAIN HARNESS**

REF	PART NO.	QTY	DESCRIPTION	SERIAL NO. FROM	NOTES:
1	41359	1	HARNESS, MAIN		

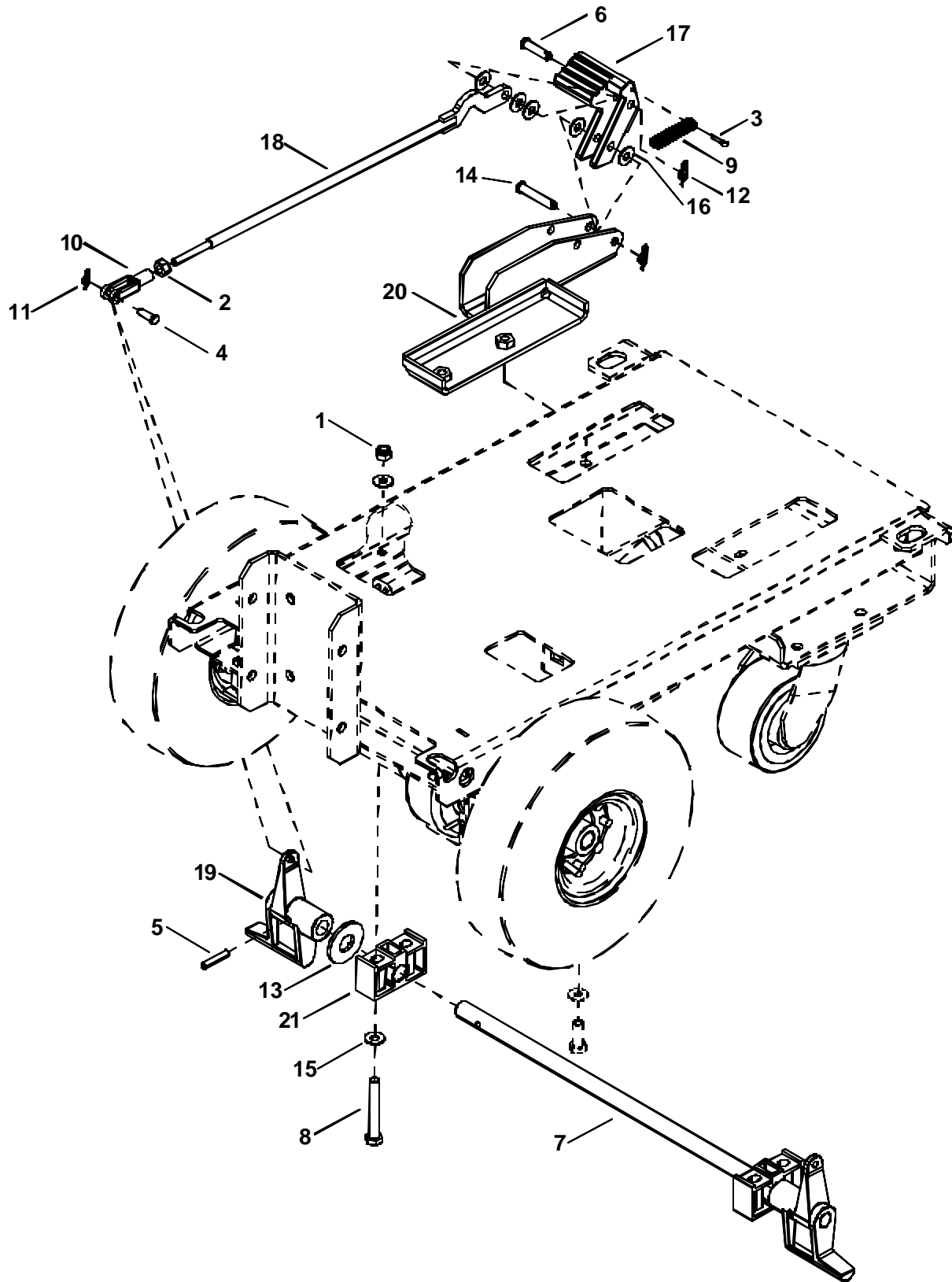


## SUGGESTED SPARE PARTS

PART NO.	DESCRIPTION	SERIAL NO. FROM	NOTES:
14606	BREAKER, 30A 50VDC		
14717	BREAKER, 3A		
35122	GASKET, VAC MOTOR		
35211	GASKET, 8.50 X 16.40		
35212	GASKET, 6.30 X 16.10		
67393	RELAY, 24VDC 100A		
72093	SWITCH, 125VDC SPST		
72130	SWITCH, SPST 2-POSITION ROCKER		
72165	SWITCH, DPDT 3-POSITION ROCKER		
73938	SPRING, EXTENSION		
81535	KNOB, 3/8-16 4 PRONG		
-	BLADE, SQUEEGEE REAR		
-	BLADE, SQUEEGEE FRONT		
48012	KNOB, 5/16-18 4 PRONG		
34337	FILTER, VAC		
73790	SKIRT, SHROUD		24" ONLY
73959	SKIRT, SHROUD		26" ONLY
73889	SKIRT, SHROUD		28" ONLY

NOTES:

# BRAKE OPTION

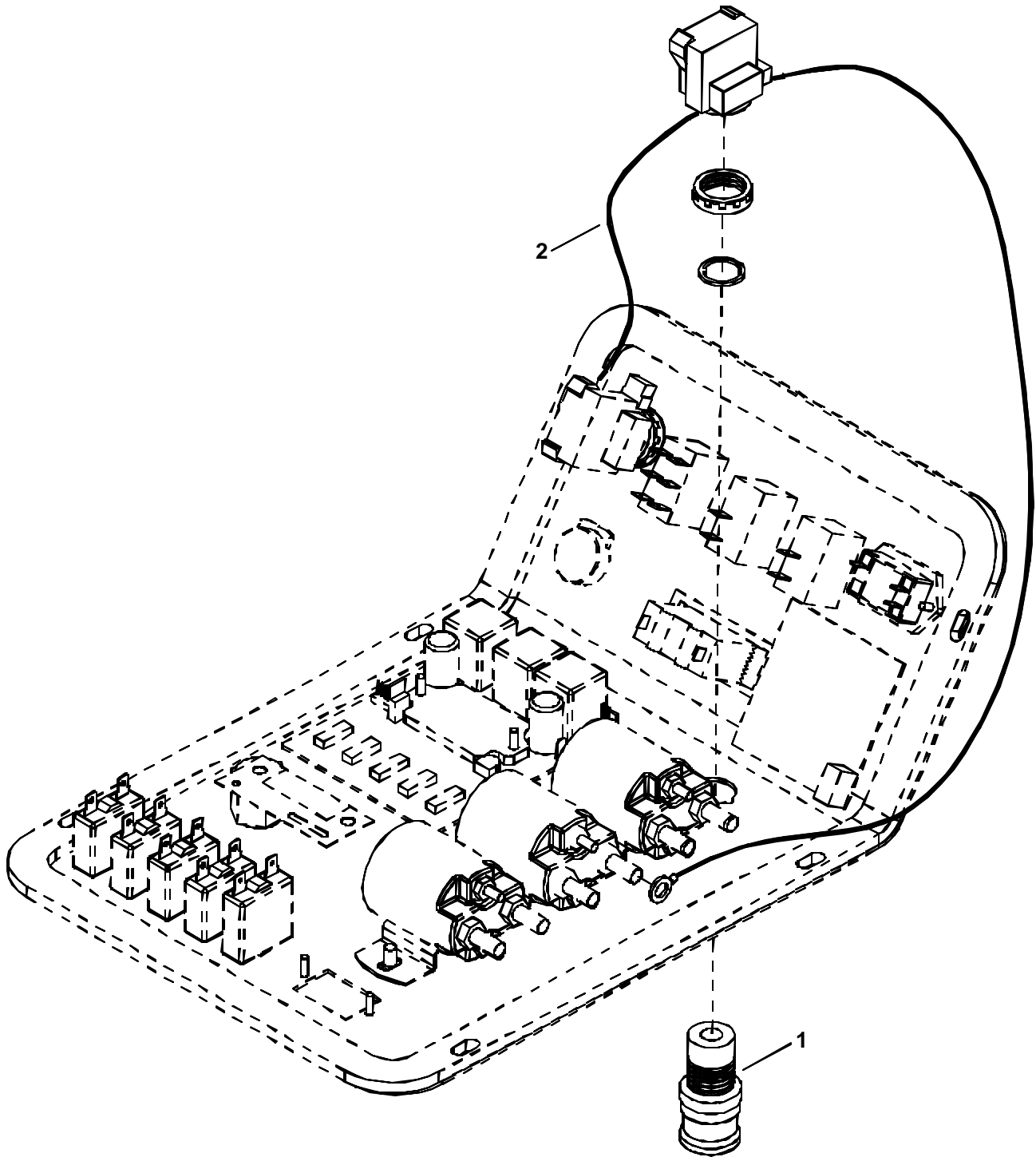


**OPTION - BRAKE**

REF	PART NO.	QTY	DESCRIPTION	SERIAL NO. FROM	NOTES:
1	57113	4	NUT, 5/16-18 HEX NYLOCK		
2	57029	1	NUT, 1/4-28 HEX SS		
3	66073	1	PIN, COTTER 1/16" X 3/4"L PLTD		
4	66116	1	PIN, CLEVIS 1/4" X 3/4" PLTD		
5	66192	2	PIN, ROLL 1/4 X 1.25L		
6	66304	1	PIN, CLEVIS 5/16 X 1-1/4		
7	67400	1	ROD, TORSION BRAKE		
8	70349	4	SCR, 5/16-18 X 2.5 HHCS		
9	73426	1	SPRING, EXT .43D X2.50L X.047W		
10	80603	1	CLEVIS, 1/4" YOKE END 1/4-28		
11	80604	1	COTTER, 1/4" RING		
12	80605	2	COTTER, 5/16" RING		
13	80633	2	WASHER, .634 D X 1.407 D X .09 T		
14	80831	1	PIN, CLEVIS 5/16" X 1.75"L PLT		
15	87029	8	WASHER, 5/16 FLAT SS		
16	87030	5	WASHER, 3/8 ID X 3/4 OD NYLON		
17	89151	1	PEDAL, BRAKE		
18	89152	1	WELDMT, ROD PRK. BRAKE		
19	89153	2	PAD, BRAKE		
20	89196	1	WELDMENT, BRAKE PEDAL		
21	140331	2	BUSHING, PILLOW BLOCK		



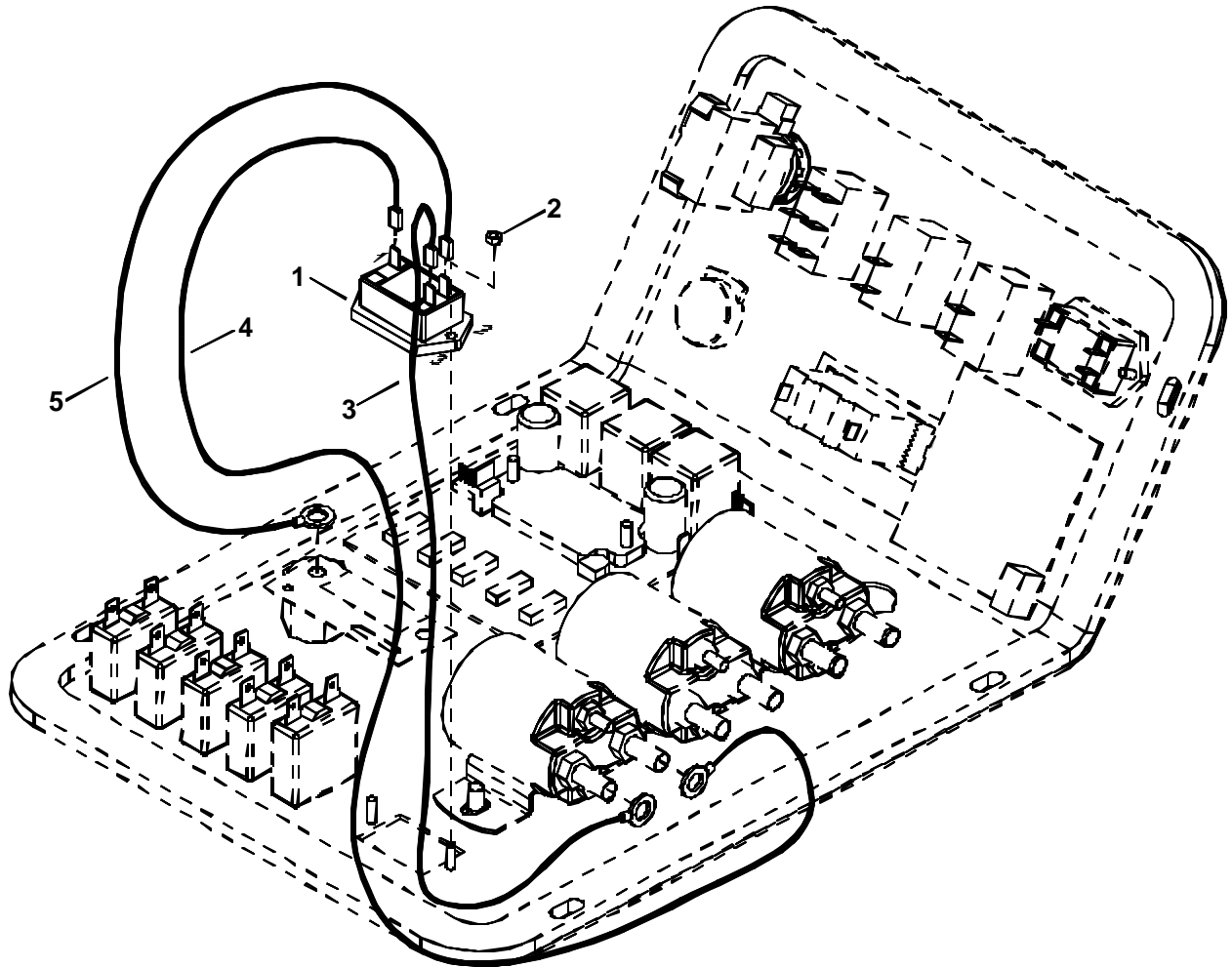
# EMERGENCY STOP OPTION



## OPTION – EMERGENCY STOP

REF	PART NO.	QTY	DESCRIPTION	SERIAL NO. FROM	NOTES:
1	72160	1	SWITCH, EMERGENCY STOP		
2	88868	1	WIRE, 16" RED/18 STRIP X STRIP		

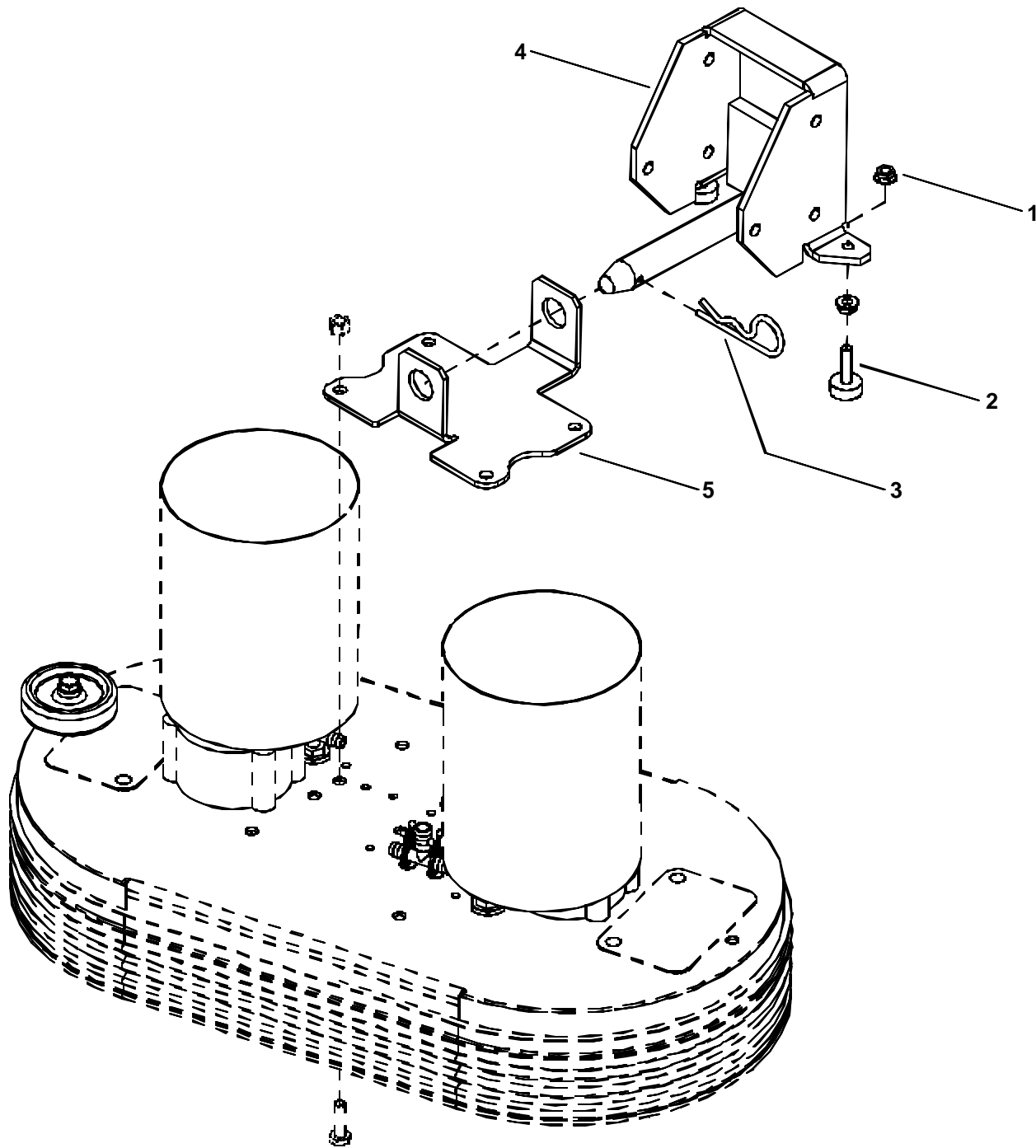
# HOUR METER OPTION



## OPTION – HOUR METER

REF	PART NO.	QTY	DESCRIPTION	SERIAL NO. FROM	NOTES:
1	54154	1	METER, 12-48 VDC LED HOUR		
2	57078	2	NUT, 4-40 HEX		
3	88772	1	WIRE, 6" RED/18 76075 X 76114		
4	880242	1	WIRE, 9" RED/18 76075 X 76114		
5	880243	1	WIRE, 9" BLK/18 76011 X 76114		

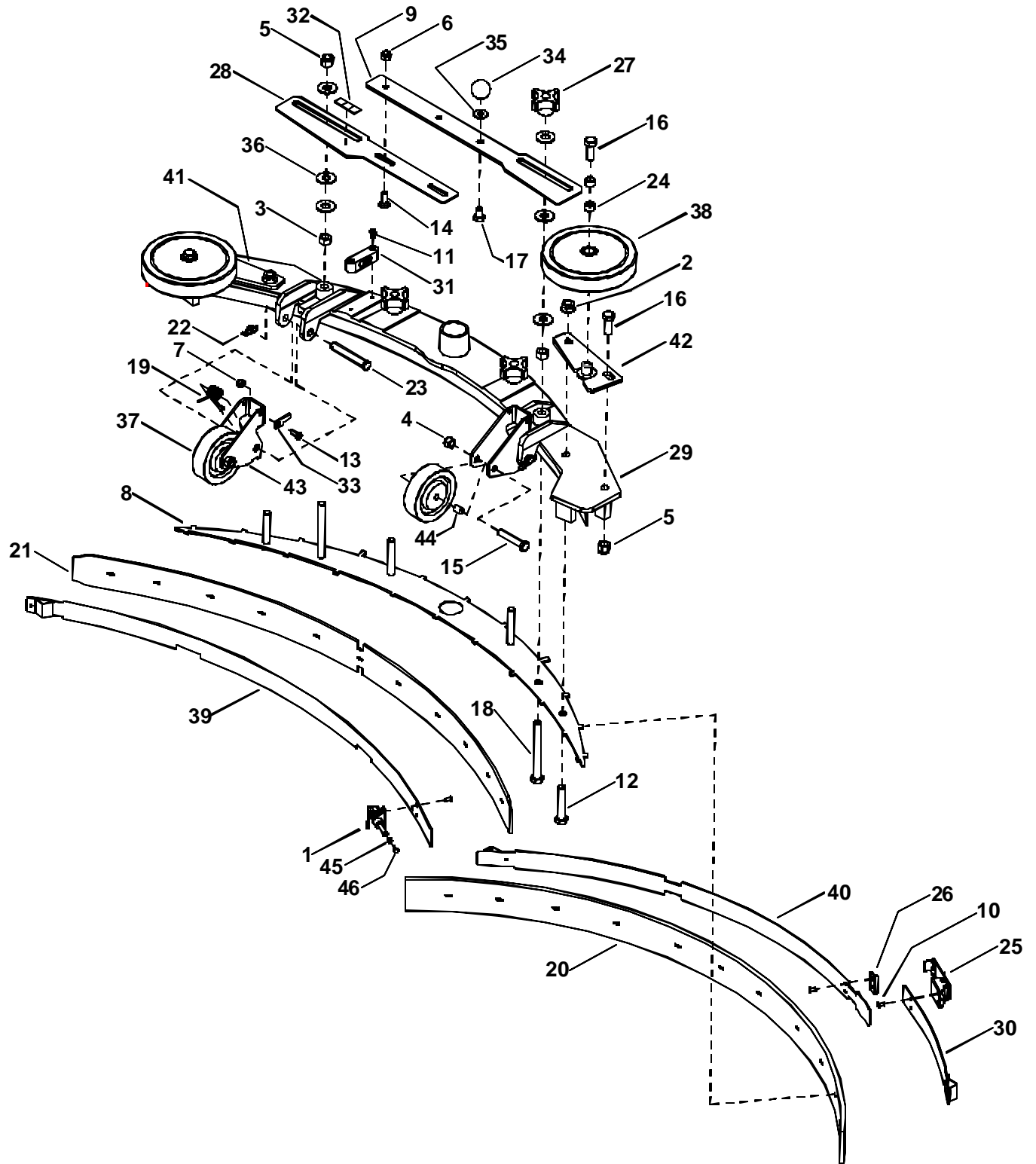
# OPTION - QUICK SCRUBHEAD CONNECT



## OPTION – QUICK SCRUBHEAD CONNECT

REF	PART NO.	QTY	DESCRIPTION	SERIAL NO. FROM	NOTES:
1	57112	4	NUT, 5/16-18 SERRATED FLG		
2	80654	2	BUMPER, ADJUSTMENT		
3	82191	1	PIN, COTTER HAIR .178 DIA X 1"		
4	89121	1	WELDMENT, SCRUB DECK PIN		
5	140389	1	BRKT, SCRUB HEAD MOUNT		

# OPTION - SMART SQUEEGEE - 24 IN & 26 IN

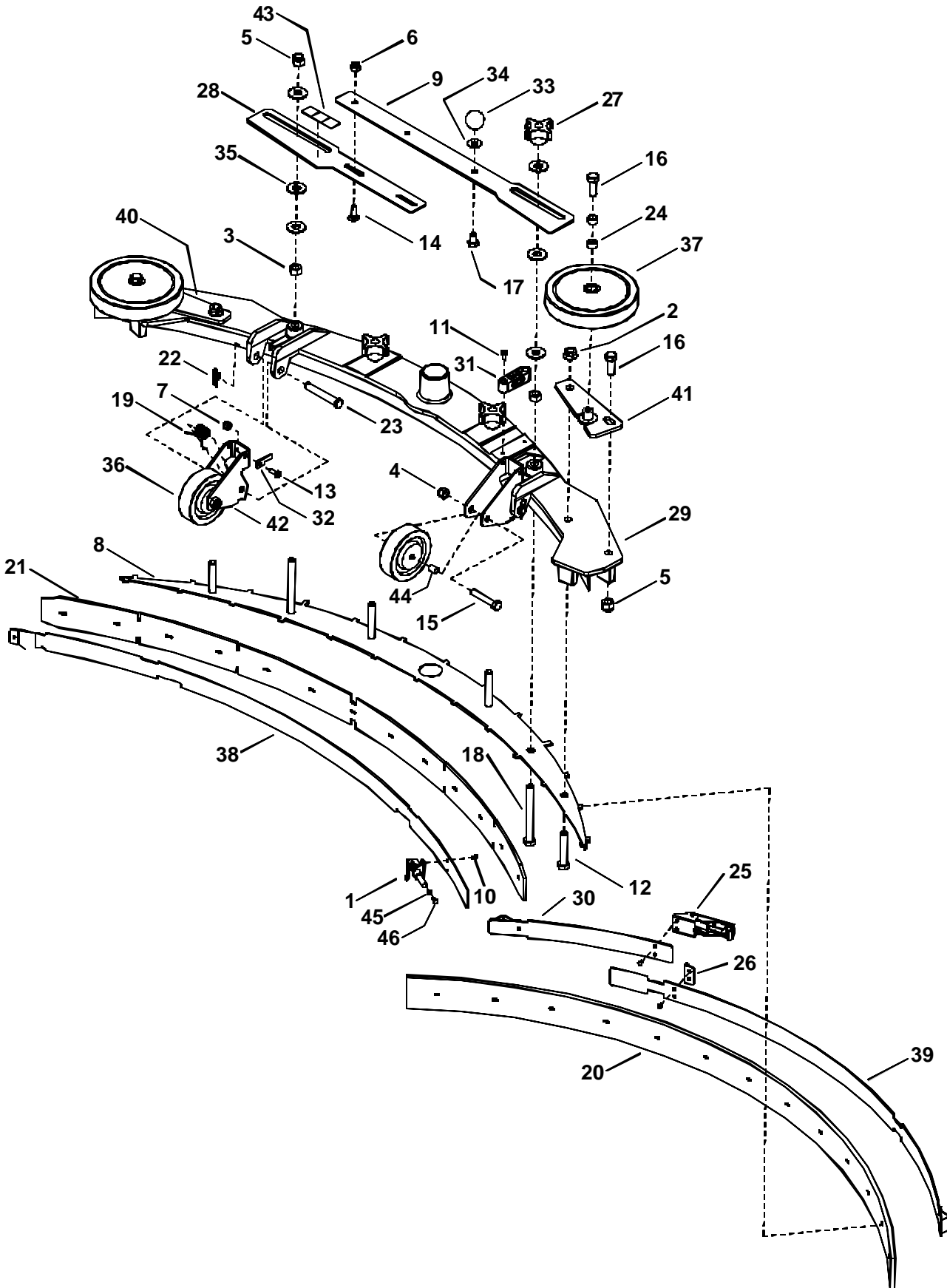


## OPTION - SMART SQUEEGEE - 24 IN & 26 IN

REF	PART NO.	QTY	DESCRIPTION	SERIAL NO. FROM	NOTES:
1	27797	1	CLAMP, STRAIGHT LINE MANUAL		
2	57032	2	NUT, 3/8-16 SERRATED FLANGE		
3	57111	2	NUT, 3/8-16 HEX		
4	57113	2	NUT, 5/16-18 HEX NYLOCK		
5	57119	3	NUT, 3/8-16 HEX NYLOCK SS		
6	57245	2	NUT, 1/4-20 HEX NYLOCK SS		
7	57252	1	NUT, 10-24 HEX NYLOCK SS		
8	62675	1	PLATE, SQUEEGEE RETAINER BLADE		
9	62684	1	PLATE, SQUEEGEE ADJUST LONG		
10	67380	7	RIVET, 5/32 OD X 1/8 GRIP		
11	70052	2	SCR, 8-32 X 3/8 PPHMS SS		
12	70070	2	SCR, 3/8-16 X 2.00 HHCS SS		
13	70086	1	SCR, 10-24 X 1/2 PHMS SS		
14	70112	2	SCR, 1/4-20 X 3/4 CARRIAGE		
15	70259	2	SCR, 5/16-18 X 1.75 HHCS		
16	70266	4	SCR, 3/8-16 X 1.00 HHCS GR5 PLT DL		
17	70375	1	SCR, 5/16-18 X 1/2 HHCS GR5		
18	70461	2	SCR, 3/8-16 X 3.50 HHCS GR5 PLTD		
19	73887	2	SPRING, 120 DEGREE TORSION		
20	73895	1	SQGE BLADE, REAR LINATEX 37"		(STANDARD)
-	73899	-	SQGE BLADE, REAR (TILE) 37"		(OPTION)
-	73897	-	SQGE BLADE, REAR (BUTTONS) 37"		(OPTION)
21	73894	1	SQGE BLADE, FRONT LINATEX 35"		(STANDARD)
-	73898	-	SQGE BLADE, FRONT (TILE) 35"		(OPTION)
-	73896	-	SQGE BLADE, FRONT (BUTTONS) 35"		(OPTION)
22	80606	2	COTTER, 3/8 RING		
23	80637	2	PIN, CLEVIS 3/8 X 2.38		
24	81247	4	SPACER, .500 OD X .391 ID X .300		
25	81488	1	LATCH, SQUEEGEE STRAP		
26	81489	1	STRIKER, SQUEEGEE STRAP REAR		
27	81535	3	KNOB, SQUEEGEE ADJ. PLATE		
28	82531	1	PLATE, SQUEEGEE ADJUST SHORT		
29	82535	1	SQUEEGEE, 32 IN		
30	82553	1	WELDMENT, REAR SQG. BAND SHORT		
31	82576	1	VIAL, LEVEL		
32	82644	1	OVERLAY, SQUEEGEE		
33	82799	1	PLATE, POINTER		
34	82922	1	BALL, KNOB ADJ.		
35	87029	1	WASHER, 5/16 X 3/4 SS		
36	87143	6	WASHER, 7/16 X 1" FLAT		
37	89202	2	WHEEL, 3" DIA CUSHION RUBBER		
38	89086	2	WHEEL, 5"D X 1" X .5"ID GRY		
39	89123	1	WELDMENT, FRONT SQUEEGEE BAND		
40	89125	1	WELDMENT, BAND REAR-LONG		
41	89164	1	WELDMENT, SQUEEGEE WHEEL RT		
42	89165	1	WELDMENT, SQUEEGEE WHEEL LT		
43	140275	2	BRKT, SQUEEGEE WHEEL SUPPORT		
44	140390	2	BUSHING, SPANNER .435 X 1.10		
45	57261	1	NUT, 8-32 HEX SS		
46	70013	1	SCR, 8-32 X 3/4 PPHMS SS		



# OPTION - SMART SQUEEGEE - 28 IN



## OPTION - SMART SQUEEGEE - 28 IN

REF	PART NO.	QTY	DESCRIPTION	SERIAL NO. FROM	NOTES:
1	27797	1	CLAMP, STRAIGHT LINE MANUAL		
2	57032	2	NUT, 3/8-16 SERRATED FLANGE		
3	57111	2	NUT, 3/8-16 HEX		
4	57113	2	NUT, 5/16-18 HEX NYLOCK		
5	57119	3	NUT, 3/8-16 HEX NYLOCK		
6	57245	2	NUT, 1/4-20 HEX NYLOCK SS		
7	57252	1	NUT, 10-24 HEX NYLOCK SS		
8	82518	1	PLATE, SQUEEGEE BLADE RETAINER		
9	82532	1	PLATE, SLIDE SQUEEGEE LONG		
10	67380	7	RIVET, 5/32 OD X 1/8 GRIP		
11	70052	2	SCR, 8-32 X 3/8 PPHMS SS		
12	70070	2	SCR, 3/8-16 X 2.00 HHCS SS		
13	70086	1	SCR, 10-24 X 1/2 PHMS SS		
14	70112	2	SCR, 1/4-20 X 3/4 CARRIAGE		
15	70259	2	SCR, 5/16-18 X 1.75 HHCS		
16	70266	4	SCR, 3/8-16 X 1.00 HHCS GR5 PLT DL		
17	70375	1	SCR, 5/16-18 X 1/2 HHCS GR5		
18	70461	2	SCR, 3/8-16 X 3.50 HHCS GR5 PLTD		
19	73887	2	SPRING, 120 DEGREE TORSION		
20	82529	1	SQGE BLADE, REAR LINATEX 41"		(STANDARD)
-	82638	-	SQGE BLADE, REAR (TILE) 41"		(OPTION)
-	82641	-	SQGE BLADE, REAR (BUTTONS) 41"		(OPTION)
21	82528	1	SQUEEGEE, FRONT BLADE LINATEX		(STANDARD)
-	82637	-	SQUEEGEE, FRONT BLADE (TILE)		(OPTION)
-	82640	-	SQUEEGEE, FRONT BLADE (BUTTON)		(OPTION)
22	80606	2	COTTER, 3/8 RING		
23	80637	2	PIN, CLEVIS 3/8 X 2.38		
24	81247	4	SPACER, .500 OD X .391 ID X .300		
25	81488	1	LATCH, SQUEEGEE STRAP		
26	81489	1	STRIKER, SQUEEGEE STRAP REAR		
27	81535	3	KNOB, SQUEEGEE ADJ. PLATE		
28	82531	1	PLATE, SQUEEGEE ADJUST SHORT		
29	82514	1	SQUEEGEE, 37 INCH		
30	82553	1	WELDMENT, REAR SQG. BAND SHORT		
31	82576	1	VIAL, LEVEL		
32	82799	1	PLATE, POINTER		
33	82922	1	BALL, KNOB ADJ.		
34	87029	1	WASHER, 5/16 X 3/4 SS		
35	87143	6	WASHER, 7/16 X 1" FLAT		
36	89202	2	WHEEL, 3" DIA. CUSHION RUBBER		
37	89086	2	WHEEL, 5"D X 1" X .5"ID GRY		
38	82558	1	WELDMENT, FRONT SQUEEGEE BAND		
39	82525	1	WELDMENT, REAR SQUEEGEE BAND		
40	89164	1	WELDMENT, SQUEEGEE EXT RT		
41	89165	1	WELDMENT, SQUEEGEE EXT LT		
42	140275	2	BRKT, SQUEEGEE WHEEL SUPPORT		
43	82644	1	OVERLAY, SQUEEGEE		
44	140390	2	BUSHING, SPANNER .435 X 1.10		
45	57261	1	NUT, 8-32 HEX		
46	70013	1	SCR, 8-32 X 3/4 PPHMS SS		



## **LIMITED WARRANTY**

Windsor Industries, Inc. warrants new machines against defects in material and workmanship under normal use and service to the original purchaser. The warranty period is subject to the conditions stated below.

### **3 YEARS FOR PARTS AND 1 YEAR FOR SERVICE LABOR**

Exceptions: Rotationally molded polyethylene tanks carry a **6 year** parts and 1 year service labor warranty. VERSAMATIC® models carry a 3 year warranty on brush motors, vacuum motors, and belts, and a 1 year service labor warranty. SENSOR® models carry a 2 year warranty on vacuum motors and belts, and a 1 year service labor warranty. Extractor brush motors, pump motors, pc boards and electronics, vac motors (other than VERSAMATIC® and SENSOR®), pumps, and FLEXSOL™ diaphragms, all RADIUS™ and TITAN™ Wet/Dry Vacs carry a 1 year parts and service labor warranty. Propane equipment has a 2 year manufactured parts warranty. The Onan® engines have a 3 year manufacturers' warranty. The Honda® /Kawasaki® engines have a 2 year manufacturers' warranty. **NOTE:** The engine warranty is administered through the engine manufacturer and must be repaired at an authorized service center.

Normal wear items including, but not limited to, belts, brushes, capacitors, carbon brushes, casters, clutches, cords, filters, finishes, gaskets, hoses, light bulbs, rectifiers, switches, squeegies, bearings, pulleys, relays, actuating cables, tires, Propane batteries and wheels will be warranted for manufacturing defects for 90 days from the purchase date.

The warranty commences on the purchase date by the original end user from an authorized Windsor Agent, subject to proof of purchase. The Machine Registration Card must be completed and returned immediately at the time of purchase. If proof of purchase cannot be identified, the warranty start date is 90 days after date of sale to an authorized Windsor distributor. Parts replaced or repaired under warranty are guaranteed for the remainder of the original warranty period.

### **90 DAY WARRANTY EXTENSION AVAILABLE**

Upon receipt of the Machine Registration Card, Windsor will extend the warranty period an additional 90 days from the purchase date. Does not include items warranted 90 days for manufacturing defects.

### **STATED WARRANTIES ARE IN LIEU OF ALL OTHER WARRANTIES, EXPRESSED OR IMPLIED.**

Any statutory implied warranties, including any warranty of merchantability or fitness for a particular purpose, are expressly limited to the duration of this written warranty. Windsor will not be liable for any other damages, including but not limited to indirect or special consequential damages arising out of or in connection with the furnishing; performance, use or inability to use the machine. This remedy shall be the exclusive remedy of the buyer.

This warranty shall not apply to: 1.damage in transit; 2.misuse or abuse(including the use of incompatible or corrosive chemicals or overloading of capacity); 3. failure due to lack of proper maintenance and care (including cleaning); 4.any design alterations performed by an organization not authorized or specified by Windsor; 5.batteries and chargers. 6. high pressure washing. 7.electrical components exposed to moisture.

If difficulty develops during the warranty period, contact the authorized Windsor Agent from whom the product was purchased. Windsor, Inc. may elect to require the return of components to validate a claim. Any defective part to be returned must be shipped freight pre-paid to an authorized Windsor Distributor/Service Center or to the Windsor factory.

### **USE OF PARTS NOT APPROVED BY WINDSOR, INC. WILL VOID ALL WARRANTIES.**

This warranty is valid only for all products sold after July 1, 1995. A product sold before that date shall be covered by the limited Warranty in effect at the date of sale to the original purchaser.



**WINDSOR INDUSTRIES, INC., 1351 W. Stanford Ave., Englewood, CO 80110 USA**  
Phone: 303-762-1800 Fax: 303-762-0817 Internet: [www.windsorind.com](http://www.windsorind.com)