

KENT

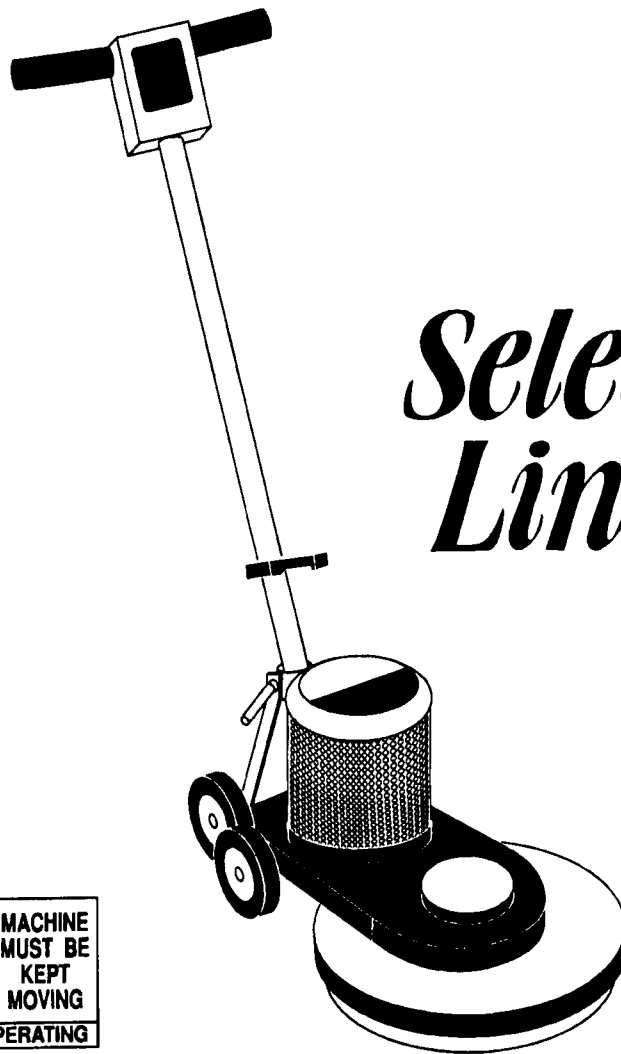
OWNER'S MANUAL

OPERATION • CARE • SERVICE

FLOOR FINISHING MACHINES

KF-1500SL

115 VOLT



*Select
Line*

TO AVOID POSSIBLE FLOOR DAMAGE		MACHINE MUST BE KEPT MOVING
CAUTION WHEN OPERATING		

PARA QUE NO SE MALTRATE EL PISO		LA MAQUINA DEBE DE ESTAR CAMINADO
OPERAR CON PRECAUCION		

TABLE OF CONTENTS

Machine Specifications	1
Optional Accessories	1
Service Information	2
Important Safety Instructions	2
Grounding Instructions	3
Operation	3
Choosing The Right Pad	3
Pad Installation	3
Adjustments	4
Drive Belt Adjustment	4
Features	4
Controls	5
Guideline For Operation	5
Cord Storage	5
Clean Up And Storage	5
KF-1500SL Assembly	6
KF-1500SL Parts List	7
Wiring Diagram	8

MACHINE SPECIFICATIONS

Voltage	115 V/60 Hz
Power Cord	50 ft. (15.2 m) 14-3 ST Fixed
Motor	1.5 HP / DC Rectified, 3200 RPM
Pad RPM	1500
Pad Drive	Industrial-Multi-V/10, 10 Groove Belt.
Machine Weight	110 lbs. (50 Kg.)

OPTIONAL ACCESSORIES

Cream Burnishing Pad015683
----------------------------	---------

SERVICE INFORMATION

To obtain consistent performance over the life of your Kent equipment, read through these instructions and save them for future reference. If you require service, contact the dealer from which the machine was purchased or an authorized service station. Always refer to your limited warranty for complete service information.

THE KENT CO. ELKHART INDIANA U.S.A.			
SERIAL NO		MODEL	
VOLTS		PHASE	Hz
MOTOR 1	AMP	H P	LIRC
MOTOR 2	AMP	H P	

The model, type, and serial number are indicated on the data plate on the back of the handle. For prompt and complete service, refer to these numbers when inquiring about service.

Write the model and serial number of your unit in the space provided. Refer to the rating plate on unit.

MODEL # SERIAL #
Retain this owner's manual for future reference.

IMPORTANT SAFETY INSTRUCTIONS

When using an electrical appliance, basic precautions should always be followed, including the following:

READ ALL INSTRUCTIONS BEFORE USING THIS FLOOR FINISHING MACHINE.

WARNING

To reduce the risk of fire, electric shock, or injury:

- Your floor machine is equipped with a safety switch lock and power switch triggers designed for your safety. Do not attempt to bypass or defeat the safety switch lock. Never use any device to lock the power switch triggers in the "ON" position.
- Do not leave the floor machine when plugged in. Turn off the switch and unplug the electrical cord when not in use and before servicing or changing pads.
- Do not allow to be used as a toy. Close attention is necessary when used near children. Do not

leave floor machine connected to an electrical outlet unattended

- Use only as described in this manual. Use only manufacturer's recommended attachments.
- Do not use with a damaged cord or plug. If the floor machine is not working as it should, has been dropped, damaged, or left outdoors, return it to a service center before using.
- Use care to keep the electrical supply cord from contacting the rotating pad.
- Do not pull, close a door on, or pull the cord around sharp edges or corners. Keep the cord away from heated surfaces.
- Connect to a properly grounded (3-wire) outlet only (refer to Grounding Instructions).
- Do not use extension cords or outlets with inadequate current carrying capacity.
- Turn off all controls before unplugging.
- Do not unplug by pulling on cord. To unplug, grasp the plug, not the cord.
- Do not handle the plug or floor machine with wet hands.
- Wind the cord no tighter than is necessary to retain it during storage. Refer to "Cord Storage".
- Hold plug when rewinding onto cord reel. Do not allow the plug to whip when rewinding.
- Use extra care when working near stairs.
- Do not use in conjunction with flammable or combustible liquids such as gasoline, or use in areas where explosive vapor or dust may be present.
- Store your floor machine indoors in a cool, dry area.
- Keep your work area well lighted.
- Warning - To avoid electrical shock, use indoors only.
- Do not use this floor machine for purposes other than buffing. The pad assembly revolves too quickly for scrubbing or shampooing.
- The weight of the machine remains on the rear wheel during operation. Do not attempt to guide the machine from left to right as you may with other floor machines. Move the machine forward at an even, continuous rate. If the machine is held in one spot too long, the high speed of the pad may damage the floor.

SAVE THESE INSTRUCTIONS

GROUNDING INSTRUCTIONS

DO NOT USE IN CANADA!

This appliance must be grounded. If it should malfunction or break down, grounding provides a path of least resistance for electric current to reduce the risk of electric shock. This appliance is equipped with a cord having an equipment grounding conductor and grounding plug. The plug must be plugged into an appropriate outlet that is properly installed and grounded in accordance with all local codes and ordinances.

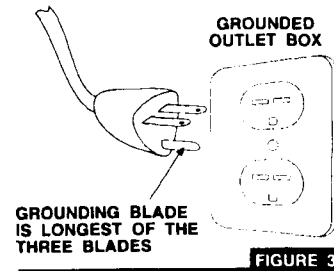
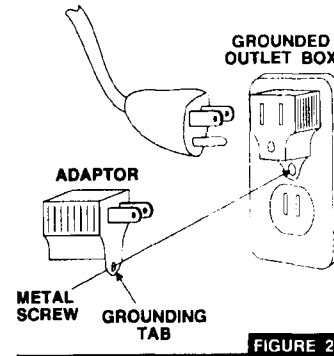
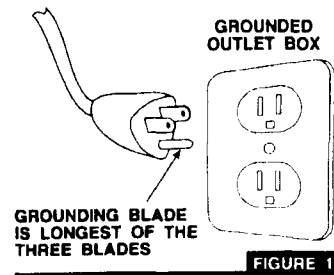
DANGER

For floor finishing machines rated less than 150 volts:

Improper connection of an equipment grounding conductor can result in risk of electric shock. Check with qualified electrician or service person if you are in doubt as to whether the outlet is properly grounded. Do not modify the plug provided with the appliance. If it will not fit the outlet, have proper outlet installed by a qualified technician. This appliance is for use on a nominal 120 volt circuit and has a grounding plug that looks like the plug illustrated in Figure A. A temporary adapter which looks like the adapter illustrated in Figure B may be used to connect this plug to a two pole receptacle, as shown, if a properly grounded outlet is not available. The temporary adapter should be used only until a properly grounded outlet, Figure A, can be installed by a qualified electrician. The green colored rigid ear, lug, or the like extending from the adapter must be connected to a permanent ground such as a properly grounded outlet box cover. Whenever the adapter is used, it must be held in place by a metal screw.

For floor finishing machines rated 150-250 volts:

If the machine is provided with an attachment plug cap as shown in Figure 3, it is intended for use on a 240 Volt (nominal) circuit. No adapter is available for this cap.



OPERATION

CHOOSING THE RIGHT PAD

Your floor machine is packed completely assembled and ready for use after you install a pad. (pads are not provided with the unit but are available at an additional cost. See "Optional Accessories.")

Your Kent floor machine is designed to be used for many different floor care applications. Make sure you use the correct pad for the type of job you want to perform. (see the "Kent Accessory Catalog" available from the dealer from whom the floor machine was purchased, or the local authorized Kent Service Agency.).

PAD INSTALLATION

NOTE - Disconnect the power cord from the electrical outlet before installing a pad.

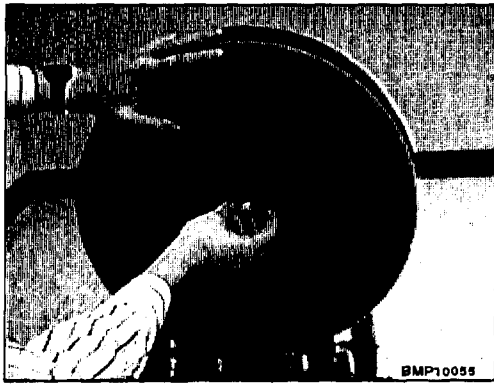


Figure 1

To install a pad on your floor machine, leave the handle in the upright position and tip the machine backwards so it rests on its rear wheels and upper handle section. Next, center the pad on the pad holder and screw the pad retaining plate to it using the pad retaining screw.

Always remove the pad when the machine is not in use. Allowing the machine to rest on the pad for an extended period of time may alter the shape of the pad which may cause the machine to wobble.

ADJUSTMENTS

HANDLE ADJUSTMENT

The handle of your floor machine can be adjusted to any comfortable work position. Simply pull upward on the handle locking device located on the lower handle shaft to release the lock, then adjust the handle to the desired position and push down firmly on the handle locking device to lock the handle in position.

The proper handle position will greatly improve the handling of the machine. Adjust the handle to a position where you can control the machine easily and comfortably and where the pad surface balances flat and level on the floor. You will want to experiment with the handle position to find the handle height at which the unit operates best for you.

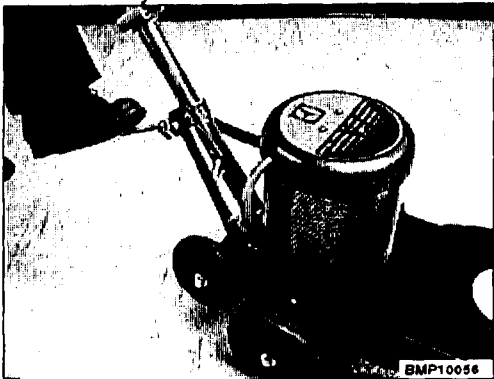


Figure 2

ADJUSTING THE HANDLE LOCK

With the cam handle above the horizontal position (unlock position), tighten the lock nut until there is a slight drag when the machine handle tube is raised and

lowered. Then loosen the lock nut slightly (1 turn) until the machine handle tube moves freely.

The handle tube should not lock securely when the cam handle is pressed downward. If the handle tube does not lock securely, tighten the lock nut slightly.

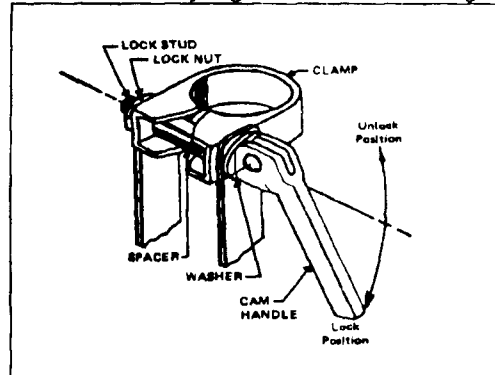


Figure 3

DRIVE BELT ADJUSTMENT

When the drive belt adjustment is necessary:

1. Loosen the 4 nuts securing the drive motor to the frame.

2. Adjust belt tension screw by evenly turning clockwise the two screws at the rear of the frame one turn.

3. Test machine with pad and pad holder. If belt slips, adjust further. If belt does not slip, tighten motor screws. Do not overtighten belt, this could cause machine to be noisy.

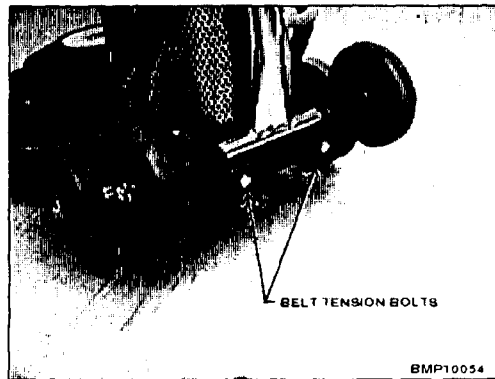


Figure 4

FEATURES

- Dual trigger negative pressure switch allows operator to run with either hand.
- Safety lock mechanism prevents accidental start.
- Premium 66 frame motors provide better cooling and more torque with longer life.
- One piece welded heavy steel handles give superior handling stability.
- Ergonomically designed foot operated positive-lock handle adjustment eliminates bending.

- High strength aluminum alloy frames withstand heavy duty wear situations.
- Flexible pad holder accommodate the most uneven floors.

CONTROLS

ON/OFF POWER SWITCH TRIGGERS

The ON/OFF switch is conveniently located in the form of dual triggers underneath the handle grips.

TO TURN THE MACHINE ON

The handle should be lowered to the operating position before switching the machine on. Place both hands firmly on the handle grips with your fingers around power triggers. Do not apply pressure on the triggers before the safety switch lock is disengaged.

Disengage the safety switch lock by pushing it away from you with one thumb. Then, while holding the safety switch lock in disengaged position, squeeze the power triggers toward the handle grips and return your thumb to the handle grip.



Figure 5

To stop the machine, simply release the triggers. The safety switch lock will automatically return to the engaged position.



Figure 6

CIRCUIT BREAKER

This floor machine comes equipped with a circuit breaker, Figure 6, to protect the machine against possible overload. If the machine becomes overloaded, the circuit breaker will break the circuit automatically,

switching the machine off. It is recommended that the cause of overloading the machine be determined before restarting. To restart, wait one minute after the circuit breaker is thrown then press the reset button located on the side of the switch box.

GUIDELINE FOR OPERATION

- Your floor machine is a very sensitive, powerful unit. When in operation, it should be guided gradually and smoothly without sudden or rough motions. You will want to practice with your machine on a smooth surface first until you have experience in operating it.
- For ease in operation, always keep the pad surface level, balanced, and flat on the floor at all times.
- Always adjust the handle to a comfortable height at which the pad surface is balanced before starting the machine (see "Handle Adjustment").

DO NOT LET THE MACHINE REST ON THE PAD FOR AN EXTENDED PERIOD OF TIME. This may alter the shape of the pad which may cause the machine to wobble.

CORD STORAGE

When not in use, loosely wind the power cord around the cord storage hook on the handle shaft and both of the handle grips, as shown.

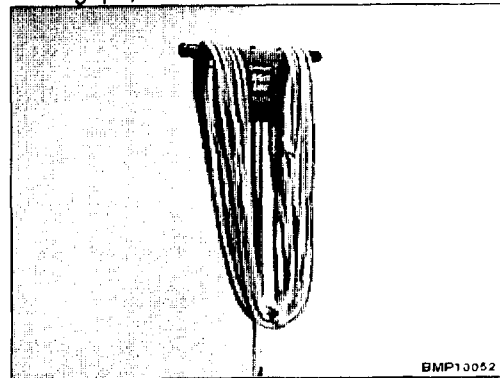
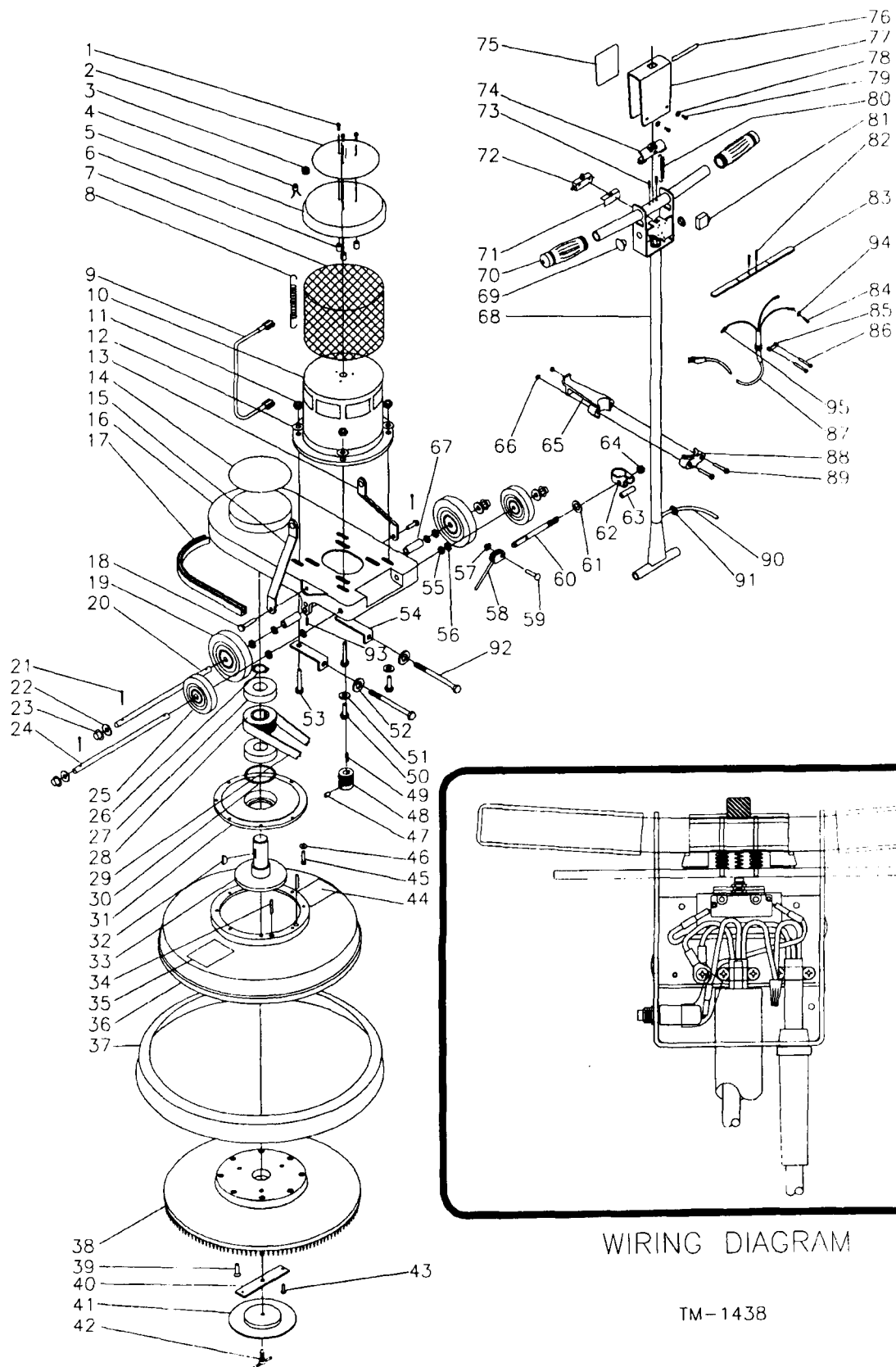


Figure 7

CLEAN UP AND STORAGE

After being used, your floor machine can be wiped clean with a soft, damp cloth and should be stored in a clean, dry place. Store the machine by tilting back so that all four wheels rest on the floor. Detachable supply cords may be coiled and stored separately or with the machine.

KF-1500SL ASSEMBLY



WIRING DIAGRAM

TM-1438

KF-1500SL PARTS LIST

DET	PART NO.	DESCRIPTION	QUANT
1	002329	SCR MACH PAN HD 10-32X2.00L	3
1	004253	WSHR LK .204ID.410OD.025T EXT	3
2	050060	LABEL,IDENT--INDL FL,6.50 CIR	1
3	055014	BSHG,STRAIN RLF--HEYCO SR-5P-4	1
3	055015	BSHG,STRAIN RLF--HEYCO SR8P2	1
4	026476	INDICATOR LIGHT-RED	1
4	053545	LABEL,INSTR--WHEN LIT,CHANGE	1
5	056304	COVER,MOTOR--DRIP,SILVER VEIN	1
6	052238	SPACER,PHEN--.250X.500,1.500L	3
7	056310	SCREEN, ALUM PERF	1
8	E45503	SPRING,EXT .257D 1.25L .035WD	1
9	025968	ASM,WIRE--14GA,BLK,5.0L	1
10	024423	MTR--115/60,1.5HP,3200RPM,BLK	1
10	039280	BRUSHBOARD& RING ASM--23407MTR	1
10	039281	BRUSH MECHANISM--FOR IMP,1-1/2	4
10	039282	SPRING--BRUSH MECHANISM	4
10	039283	BRIDGE RECTIFIER--115 VAC	1
10	039284	CAPACITOR (VARISTOR)--115VAC	1
11	003349	NUT,HEX--.312-18,ZN PLT	4
12	004212	WSHR LK .326ID.586OD.078TSPLT	4
13	056312	CONNECTING LEG,RIGHT,BLACK	1
14	053493	LABEL,IDENT--1500 RPM,4.75 CIR	1
15	056313	CONNECTING LEG,LEFT,BLACK	1
16	056315	FRAME,BASE--HI-SPEED,BLACK	1
17	055013	CHANNEL,GUARD--25.25 LONG	1
18	003265	SCR CAP HEX HD .375-16X1.50L	2
19	050776	WHEEL--6.00DIA,.500BORE,1.37HB	2
20	052388	AXLE--H.S.F.M..50DIA X 17.50L	1
21	005383	PIN,COTTER--.094X1.000 LONG	4
22	004475	WSHR FLT .500ID1.87OD.105T STL	2
23	E48939	NUT,PUSH--.500,WASHER CAP,ZN P	4
24	050765	AXLE-H.S. FL MACH KF205H	1
25	048058	WHEEL--5.00DIA,.504BORE,1.12HB	2
26	004473	RING,RTNG--EXT.1.37 SHAFT,5100	1
27	027219	BRG,BALL--1.37ID,3.149OD,.827W	2
28	053492	PULLEY,GRVD--10 GRV,3.178PD	1
29	054899	BELT,V--10V'S,30.0" PITCH L	1
30	004474	WSHR SPR TNSN 2.67ID2.98OD.030	1
31	050762	HOUSING-H.S.	1
32	050775	KEY,WOODRUFF--#608,1.00D,.187W	1
33	033769	WDMT,PLATE/SHAFT--DRIVE	1
34	004477	PIN,DOWEL--.250X1.500 LONG	2
35	052410	PLATE,INSTR--CAUTION SPANISH	1
36	056314	COVER,BRUSH--FLOOR MACH,SL	1
37	053331	BUMPER,VINYL--BLACK,20",SMSTR	1
38	020352	ASM,PAD HOLDER--18.00",PLSTFLX	1
38	020353	HOLDER,PAD--18.00",PLASTIC	1
39	001493	SCR CAP FLAT HD--.375-16X1.00L	3
40	052736	BAR,STL--.179X1.25X 6.12L	1
41	033864	ASM,CLAMPING PLATE--KF-2000B	1
41	052373	CLAMPING PLATE--H.S.PAD HOLDER	1
42	033816	WDMT,PAD RETAINER--KB-2000B	1
43	002380	SCR TPG F PAN HD 10-B X.625L	2

DET	PART NO.	DESCRIPTION	QUANT
44	052395	PLATE,INSTR--CAUTION ENGLISH	1
45	002260	SCR CAP SOC HD .250-20X1.00L	4
46	002278	WSHR LK .262ID 489OD.062TSPLT	4
47	005387	SCR SET CUP PT .312-18X.500L	1
48	051898	PULLEY,GRVD--10 GRV,1.400 PD	1
49	040673	KEY,SQUARE--.187 SQ,1.000 LONG	1
50	005515	SCR MACH FIL HD .312-18X1.75L	2
51	004217	WSHR FLT .344ID.625OD.071T STL	2
52	004254	WSHR LK .267ID.510OD.028T EXT	2
53	003249	SCR CAP HEX HD .312-18X1.25L	2
54	050941	BRACKET-BELT ADJUSTMENT	2
55	005449	WSHR SPR TNSN .531ID 860OD.030	2
56	004230	WSHR FLT .515ID.750OD.031T FBR	8
57	046632	NUT,PUSH--.312,WASHER CAP,ZN P	1
58	046596	CAM-HANDLE LOCK	1
59	004314	RIVET,SOLID--RD HD,.312X1.250L	1
60	046597	CLAMP STUD	1
61	046607	WSHR SLTD .227X.656,1.00OD.073	1
62	046595	CLAMP HANDLE LOCK	1
63	046606	SPACER,RBR--.325X.656,2.000L	1
64	005279	NUT,HEX LOCK--.375-16,NYLOC	1
64	032656	ASM,LOCK--CAM	1
65	048571	CORD HOOK--BODY	1
66	003349	NUT,HEX--.312-18,ZN PLT	2
67	052387	SPACER,STL--.750ODX.506IDX2.00	2
68	034896	WDMT,HNDL--LARGE SWBOX W/HOLES	1
69	056092	PLUG,BUTTON--.50 MHD,.074 THK	1
70	047418	HANDLE-GRIP	2
71	055804	INSULATION PAPER--2.0X2.5	1
72	026903	SWITCH,PUSH--SPST,25A,1250250V	1
73	005467	PIN,ROLL--.125 DIA,1.750L	2
74	050588	SAFETY SWITCH	1
75	056309	LABEL,IDENT--KENT HIGH-SPEED	1
76	050785	LABEL,INSTR--TILT TO START	1
77	035091	ASM,SWITCH BOX COVER--SELECT	1
78	004253	WSHR LK .204ID.410OD.025T EXT	2
79	001331	SCR TPG C PAN HD 10-24X.750L	2
80	048785	SPRING,EXT .250D 2.00L .026WD	1
81	026699	CIRCUIT BREAKER 20 AMP	1
82	046648	SPRING,COMP .344D .687L .032WD	2
83	056089	BAR,STL--TRIGGER,11.00",BLACK	1
84	001255	SCR MACH RD HD 8-32X.375L	1
85	055788	CLAMP,CABLE--PLASTIC	2
86	046642	CLAMP,LOOP--.875DIA,VINYL COAT	1
87	025067	CORD,POWER--14-3,ST,GRAY,50'	1
88	048572	CORD HOOK--CAP	1
89	005515	SCR MACH FIL HD .312-18X1.75L	2
90	026863	CABLE,ELEC--14-3,ST,GRAY,60IN	1
91	055868	GROM--.688ID,.812MHD,.062 PA	1
92	005558	SCR CAP HEX HD .250-20X5.50L	2
93	223228	SCR SET CONE PT .25-20X.50L	2
94	005347	WSHR FLT .188ID.438OD.065T BR5	1
95	026400	NUT,WIRE--IDEAL 74B	1

THE KENT LIMITED WARRANTY

Your Kent equipment which has been manufactured, tested and inspected in accordance with carefully specified engineering requirements, is warranted to be free from defects in material and workmanship. This warranty is, however, subject to the following qualifications, conditions, and limitations which are set forth to provide you and all users of the Kent equipment with information concerning the duration, extent, availability, and applicability of this Kent limited warranty, the procedure to be taken to obtain its performance, and other information concerning the Kent warranty policy.

The Kent Limited Warranty is extended to the original end user as follows:

KFSeries, 175 RPM machine, 5 year parts replacement and 1 year service labor warranty.
All Select Line series machines, 1 year parts replacement and 1 year service labor warranty.
KF175SA, KF205S2, and all 1000, 1500, 2000, 2500 RPM electric machines 3 year parts replacement and 1 year service labor warranty.

Replacement parts guaranteed for 90 days from date of installation against defects in material and workmanship.
The 10 year poly component replacement warranty with 1 year service labor extends for a period of ten (10) years from the date of the original purchase of the Kent equipment by the original purchaser. This warranty will not cover damage attributable to the following:

- (1) Improper, unreasonable or negligent use or abuse of the equipment.
- (2) Use of equipment with hot water or high temperature above 130 degrees Fahrenheit (54 degrees centigrade).
- (3) "Warpage", "Creepage", or "Distortion" of part so long as the same does not interfere with normal operation.
- (4) Abrasions or punctures of the equipment.

The start date of the warranty coverage shall be the purchase date of the original end user or six months from the date the machine was shipped from the factory, whichever comes first.

PARTS OF KENT EQUIPMENT NOT COVERED BY WARRANTY

Certain parts of Kent equipment require replacement in the ordinary course of use due to normal wear by reason of their characteristics. These are normal wear items such as cords, gaskets, switches, bumpers, carbon brushes, handle grips, bags, hoses, bearings, etc.

EXCEPTIONS AND EXCLUSIONS FROM WARRANTY

This equipment is required to be used on electric current as indicated on the data plate. Otherwise damage, defects, malfunctions or other failures of the equipment arising from use on electric current not as indicated are excepted and excluded from this warranty. Defects, malfunctions, failure or damage of the equipment caused by improper, unreasonable or negligent use or abuse while in the possession of the purchaser are likewise excluded from this warranty. If repair is done on your equipment by anyone other than those designated as authorized to perform such work without first having obtained factory instructions, The Kent Company, at its sole option, may determine that this warranty will not apply and that reimbursement for such repair will not be made because of the failure to comply with such factory specified instructions.

PROCEDURE TO BE TAKEN TO OBTAIN PERFORMANCE OF WARRANTY REPAIR

To secure repair of the equipment or any warranted parts under this warranty, the following procedure should be taken. The inoperative equipment or warranted parts, together with satisfactory evidence of the purchase date, must be delivered, with shipping and delivery charges prepaid, to one of the following:

- (1) The dealer from whom purchased;
- (2) Any Kent distributor's service department in the United States;
- (3) Any Kent authorized service station in the United States.

If you are unable to locate any of the foregoing, you may write or otherwise communicate with The Kent Company for instructions before repair service is performed by anyone else. In such event, The Kent Company will provide either the location of a closely available Kent distributor service department or Kent authorized service station or other factory instructions. Upon compliance with the above procedure, all warranted defects will be repaired, at no additional charge or costs to the customer, and the repaired product returned to the customer, with all shipping and delivery charges prepaid. In following the procedures above set forth, PLEASE MAKE CERTAIN to state the Kent model, type and serial number as shown on the dataplate of the equipment.

REPLACEMENT

In the event of a defect, malfunction or failure of your Kent equipment or any warranted part to conform with this warranty, The Kent Company may, at its sole option and own expense, replace the equipment or any warranted part with another new identical or reasonably equivalent model or part in lieu of repairing the defect.

NO REFUND OF PURCHASE PRICE

The Kent Company will not, as a matter of its warranty policy, refund the customer's purchase price.

WARRANTY REGISTRATION CARD FOR YOUR KENT EQUIPMENT AND REQUEST FOR INFORMATION

Your Kent Company distributor from whom you purchased your equipment is responsible for the registration of your warranty with the factory. We ask that you cooperate with your distributor in supplying the necessary information on the warranty card so that we may better serve you. Any information or questions you may have concerning your Kent equipment or this warranty may likewise be secured from the factory. This warranty gives you specific legal rights, and you may also have other rights which vary from state to state.

THE KENT COMPANY

P.O. BOX 1665 ELKHART, INDIANA 46515