

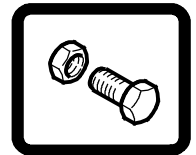
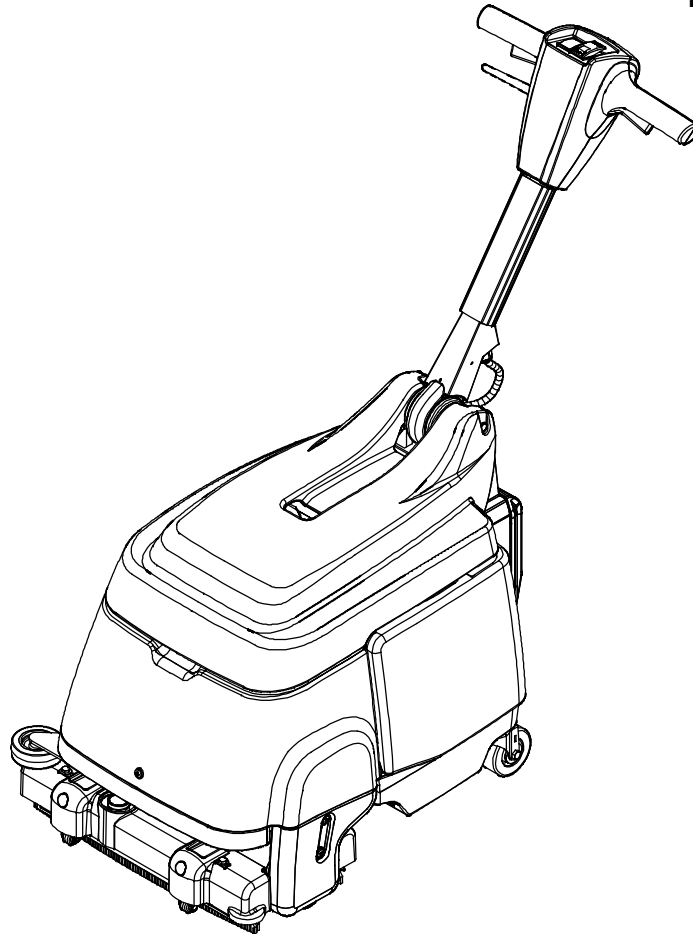


Models
9008637 - Speed Scrub 15 in, AGM Battery
9008640 - Speed Scrub 15 in, Lithium-ion Battery

SPEED SCRUB®

15 in BATTERY FLOOR SCRUBBER
(S/N 10000000-20000000)

PARTS MANUAL



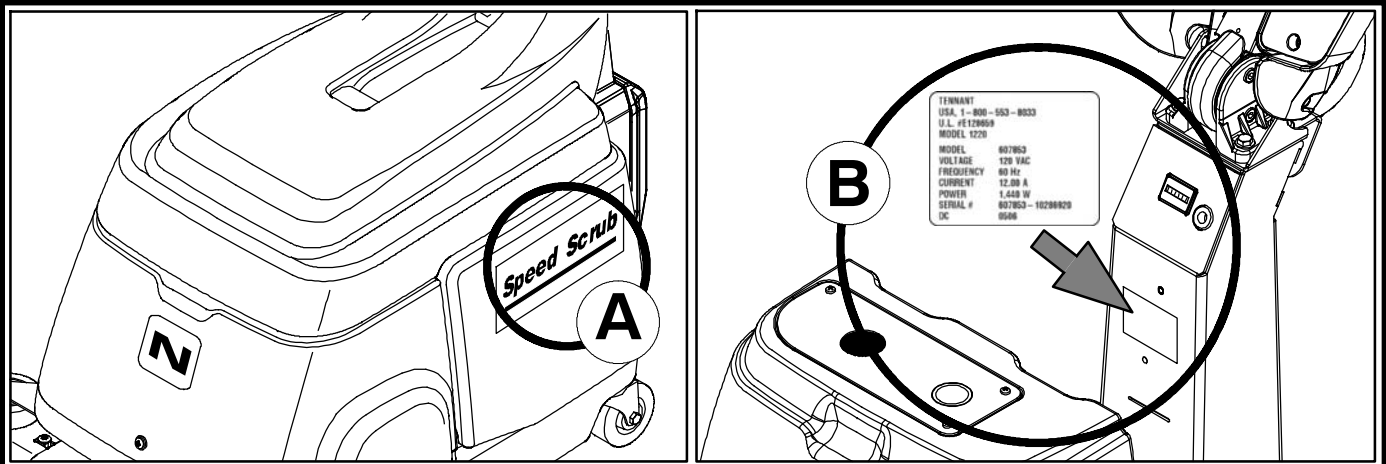
For the latest Parts manuals and other language Operator manuals, visit:

www.nobles.com/manuals

www.nobles.com

9008730
Rev. 03 (03-2016)





Ref	Part No.	Serial Number	Description	Qty.
1	82681	(000000-)	Bracket W/dt, Lpg Mount	1
▽ 2	63810	(000000-)	Latch Assy, Lpg Tank Mtg, W/Nut	4
▲ 3	51839	(000000-)	Nut Adjustable, Lpg Tank Mtg	2
4	49263	(000000-)	Tie, Cable	3
(D)	82556	(000000- 001039)	Bracket, Vaporizer	1
	54930	(000000-)	Vaporizer, LPG	1

HOW TO ORDER PARTS - See diagram above

Only use TENNANT Company supplied or equivalent parts. Parts and supplies may be ordered online, by phone, by fax or by mail.

Follow the steps below to ensure prompt delivery.

1. (A) Identify the machine model.
2. (B) Identify the machine serial number from the data label.
3. (C) Ensure the proper serial number is used from the parts list.
4. Identify the part number and quantity.
Do not order by page or reference numbers.
5. Provide your name, company name, customer ID number, billing and shipping address, phone number and purchase order number.
6. Provide detail shipping instructions.

- (D) ▽ - identifies an assembly
▲ - identifies parts included in assembly

Please fill out at time of installation for future reference.

Model No. - _____

Serial No. - _____

Machine Options - _____

Sales Rep. - _____

Sales Rep. phone no. - _____

Customer ID Number - _____

Installation Date - _____

Tennant Company

PO Box 1452
Minneapolis, MN 55440
Phone: (800) 553-8033 or (763) 513-2850

www.nobles.com

Specifications and parts are subject to change without notice.

Copyright © 2011 - 2016 TENNANT Company, Printed in U.S.A.

RECOMMENDED MAINTENANCE ITEMS

GENERAL RECOMMENDED MAINTENANCE
 ITEMS 5

STANDARD PARTS

HANDLE GROUP 6
 HANDLE MOUNT GROUP 8
 FRAME GROUP 10
 RECOVERY AND SOLUTION TANKS
 GROUP 12
 TANK COVER GROUP 14
 VACUUM FAN GROUP 16
 SCRUB HEAD GROUP 18
 SCRUB HEAD LIFT GROUP 20
 SOLUTION GROUP 22
 SQUEEGEE GROUP, FRONT AND REAR 24
 BATTERY AND CHARGER GROUP (LITHIUM) . 26
 BATTERY AND CHARGER GROUP (AGM) 27
 ELECTRICAL DIAGRAM, AGM BATTERY 28
 ELECTRICAL DIAGRAM, LITHIUM BATTERY .. 30
 WIRE HARNESS, MAIN 32
 WIRE HARNESS, JUMPER (LITHIUM) 34
 WIRE HARNESS, JUMPER (AGM)
 (S/N 10552859- 20000000) 35
 WIRE HARNESS, JUMPER (AGM)
 (S/N 10000000- 10552859) 36

OPTIONS

BATTERY CONVERSION KIT
 (AGM TO LITHIUM) 38
 BATTERY CONVERSION KIT
 (LITHIUM TO AGM) 39

RECOMMENDED MAINTENANCE ITEMS

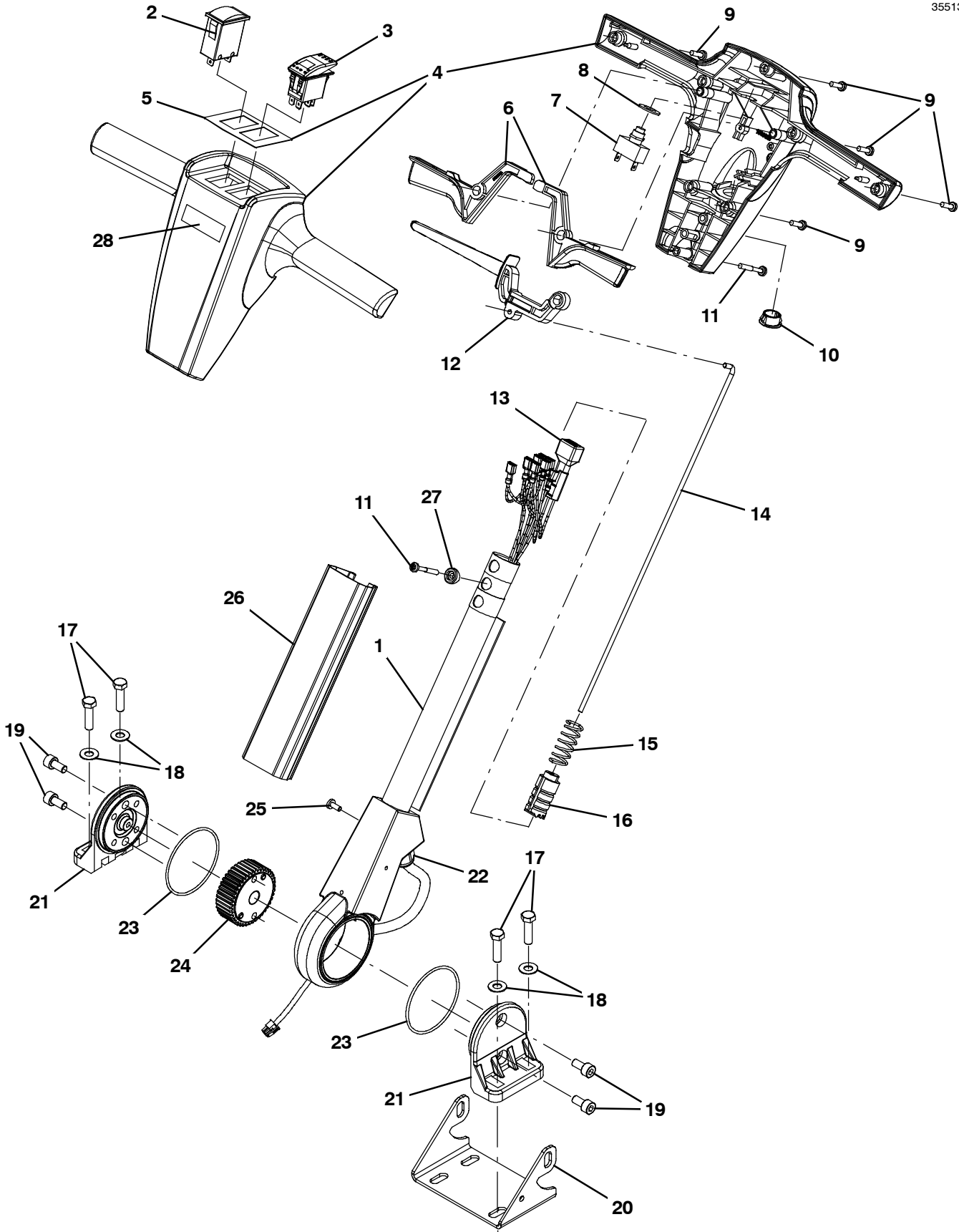
RECOMMENDED MAINTENANCE ITEMS

GENERAL RECOMMENDED MAINTENANCE ITEMS

Ref.	Part No.	Serial Number	Description	Qty.
	1014918	(00000000-) Wheel, 03.0d 0.88w 0.31b, W/ Bshg, Rbr	3
	601443	(00000000-) Caster, Swivel, 3.0d 1.3w, .50- 13 Stem	2
	9004283	(00000000-) Belt Kit, W/ Installation Tool	1
	1037197	(00000000-) Brush, Scrub, 89mm Od X 386mm, Nylon (Standard)	1
	1037277	(00000000-) Brush, Scrub, 89mm Od X 386mm, Poly (Optional)	1
	1037278	(00000000-) Brush, Scrub, 89mm Od X 386mm, Grit (Optional)	1
	9008581	(00000000-) Wheel Kit, Sqge, W/ Hdwr	1
	1064751	(00000000-) Blade Assy, Sqge, Ure, Cast, 4.2thk	2
	1049397	(00000000-) Blade Assy, Sqge, Ure, Millable	2
	1052876	(00000000-) Gasket, Tank	2

HANDLE GROUP

355133



HANDLE GROUP

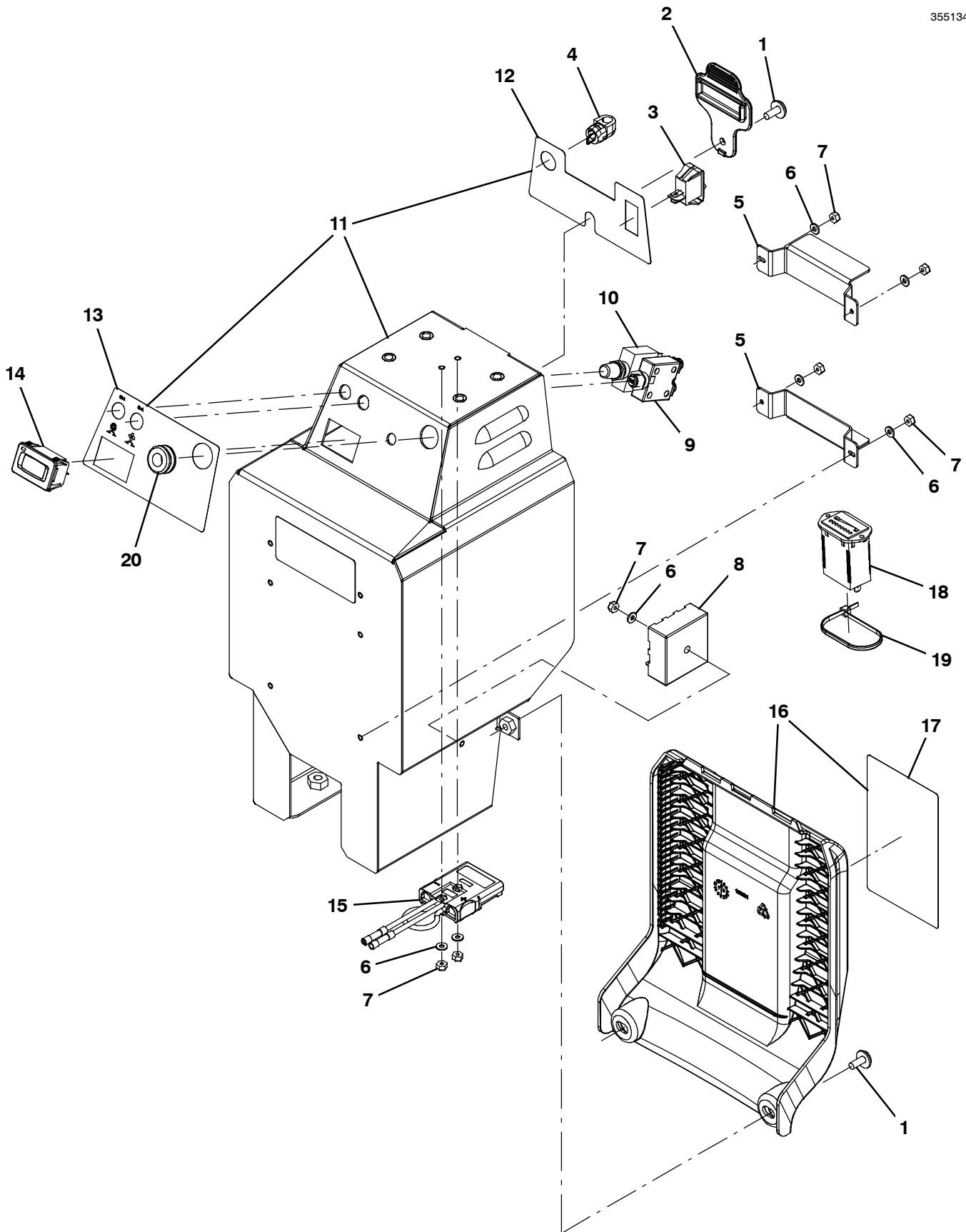
Ref.	Part No.	Serial Number	Description	Qty.
▽	1	9008682	(10000000- 20000000) Handle Kit, Assy [Nob, Li+] (Li- Ion Model)	1
▽	1	9008683	(10000000- 20000000) Handle Kit, Assy [Nob, Agm] (AGM Model)	1
▲	2	1048378	(10000000- 20000000) Gauge, Voltmeter, 12vdc, Nominal (Li- Ion Model)	1
▲	2	1065438	(10000000- 20000000) Gauge, Voltmeter, 12vdc Nominal [Agm] (AGM Model)	1
▲	3	1053503	(10000000- 20000000) Switch, Rocker [Lighted] 12v Dpdt	1
▲▽	4	9008684	(10000000- 20000000) Cover Kit, Front/Rear [Nob]	1
▲▲	5	1049028	(10000000- 20000000) Label, Opertnl, Instrmt Panl	1
▲	6	1033893	(10000000- 20000000) Lever, Cntrl, Switch	2
▲	7	1063165	(10000000- 20000000) Switch, Push, Spst, No	1
▲	8	578430	(10000000- 20000000) Washer, Flat, 0.50d, Pl [Spring- Disc]	2
▲	9	1043573	(10000000- 20000000) Screw, #10- 14 X 0.675, Spl[Shcs,Selftap]	7
▲	10	130175	(10000000- 20000000) Plug, Hole, Rnd, 0.75d, Blk	1
▲	11	1043572	(10000000- 20000000) Screw, #10- 14 X 01.5, Spl[Shcs Selftap]	2
▲	12	1034945	(10000000- 20000000) Lever, Adjmt, Handle	1
▲	13	222290	(10000000- 20000000) Diode, Ele, Plug	1
▲	14	1034180	(10000000- 20000000) Rod, Release	1
▲	15	1013295	(10000000- 20000000) Spring, Cmpr [2100 Series]	1
▲	16	9006059	(10000000- 20000000) Plunger Kit, Handle	1
	17	1016399	(10000000- 20000000) Screw, Hex, M8 X 1.25 X 30, NI, Ss	4
	18	140027	(10000000- 20000000) Washer, Flat, 0.35b 0.75d .04, Ss	4
▲	19	49609	(10000000- 20000000) Screw, Soc, M8 X 1.25 X 16, 12.9	4
▲	20	1048219	(10000000- 20000000) Bracket, Pivot, Cover, Mtg	1
▲	21	1000307	(10000000- 20000000) Handle, Pivot, Half	2
▲	22	1053722	(10000000- 20000000) Cordgrip, Str, Pg- 11	1
▲	23	612422	(10000000- 20000000) Seal, Org, Gear Seat	2
▲	24	1034872	(10000000- 20000000) Gear, Lock, Handle	1
▲	25	1035681	(10000000- 20000000) Screw, Pan, M5 X 0.80 X 12	1
▲	26	1036599	(10000000- 20000000) Cover, Handle, Nobles	1
▲	27	1034176	(10000000- 20000000) Bushing, Flng, 05mmb 12mmd 08mml [Pa6]	1
▲	28	1039088	(10000000- 20000000) Label, Logo, 02.8l 3color [Nobles]	1

▽ ASSEMBLY

▲ INCLUDED IN ASSEMBLY

HANDLE MOUNT GROUP

355134



HANDLE MOUNT GROUP

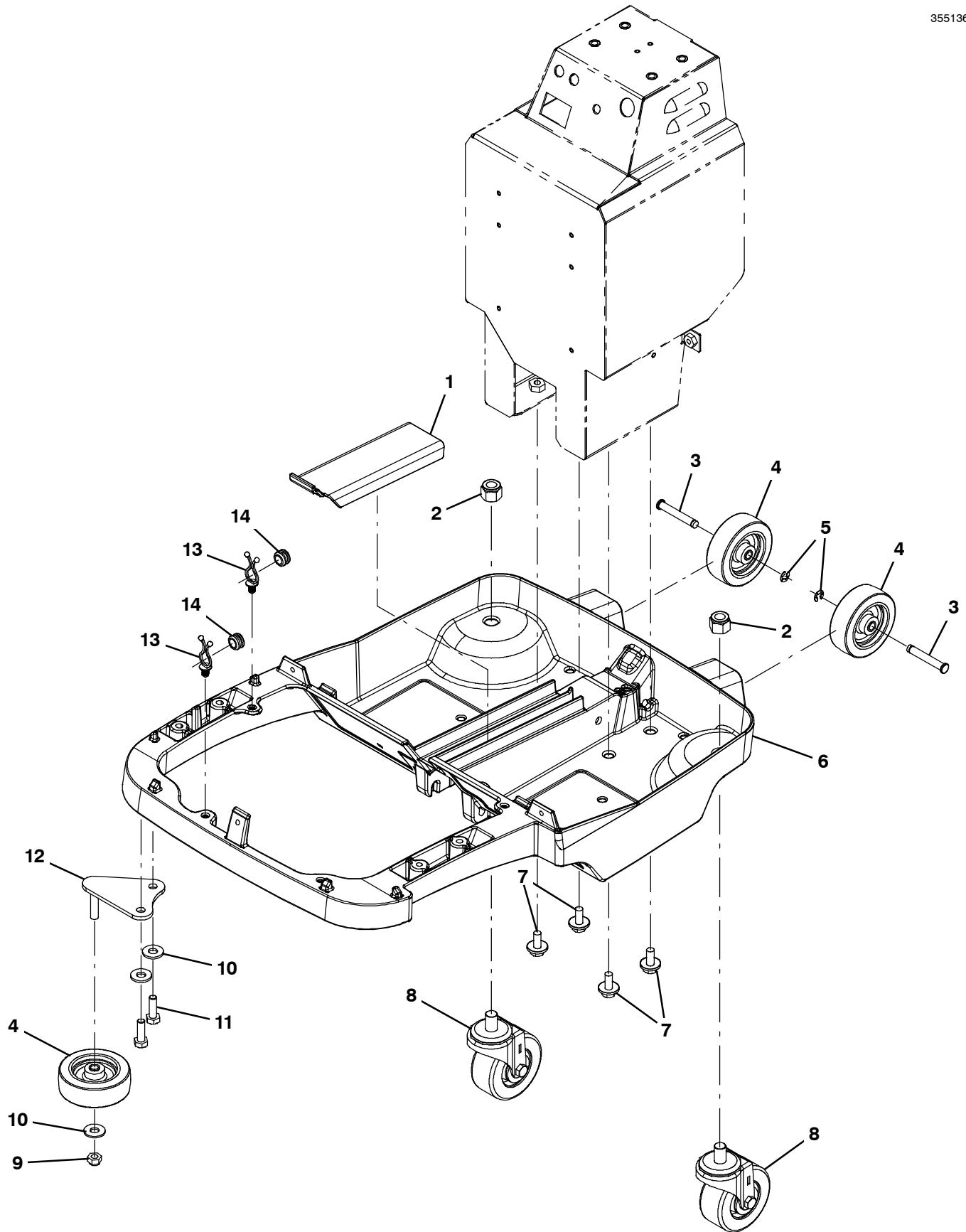
Ref.	Part No.	Serial Number	Description	Qty.	
1	1019349	(10000000- 20000000)	Screw, Trs, M6 X 1.00 X 16, Ss, Sems	3	
2	1048989	(10000000- 20000000)	Cover, Chrgr Plug	1	
3	578005000	(10000000- 20000000)	Switch, Rocker, Spst	1	
4	1049283	(10000000- 20000000)	Strain Relief, Cord, Right Angle	1	
5	1059709	(10000000- 20000000)	Channel, Stand- Off	2	
6	41578	(10000000- 20000000)	Washer, Flat, 06, Ss	7	
7	75939	(10000000- 20000000)	Nut, Hex, Lock, #06- 32, NI	7	
8	1053209	(10000000- 20000000)	Module, Timer, 12v, 5s Interval (Li- Ion Model)	1	
9	1067771	(10000000- 20000000)	Circuitbreaker, 35.0a	1	
10	383725	(10000000- 20000000)	Circuitbreaker, 30.0a, Resetable	1	
▽	11	9008687	(10000000- 20000000)	Column Kit, Suppt, W/ Label	1
▲	12	1053739	(10000000- 20000000)	Label, Opertnl, Instmt Panl, Lwr	1
▲	13	1065072	(10000000- 20000000)	Label, Circuitbreaker [Conventional]	1
	14	1064038	(10000000- 20000000)	Gauge, Hourmeter, 05- 277 Volt, Ac / Dc	1
	15	1066279	(10000000- 20000000)	Plug Kit, Chrgr, T1b [Psbs 75x]	1
▽	16	9008685	(10000000- 20000000)	Cover Kit, Battery, W/Labels [Na]	1
▲	17	1049889	(10000000- 20000000)	Label, Warning, Dc Scrubber	1
	18	1064516	(10000000- 20000000)	Indicator, Battery, 12vdc, 1.73volt/Cell (AGM Model)	1
	19	130773	(10000000- 20000000)	Tie, Cable, Nyl, 11.0l, .14w, 3.0 Max. D (AGM Model)	1
	20	86726	(10000000- 20000000)	Grommet, Rbr, 0.44id, F/0.5h, .19 Matl	1

▽ ASSEMBLY

▲ INCLUDED IN ASSEMBLY

FRAME GROUP

355136

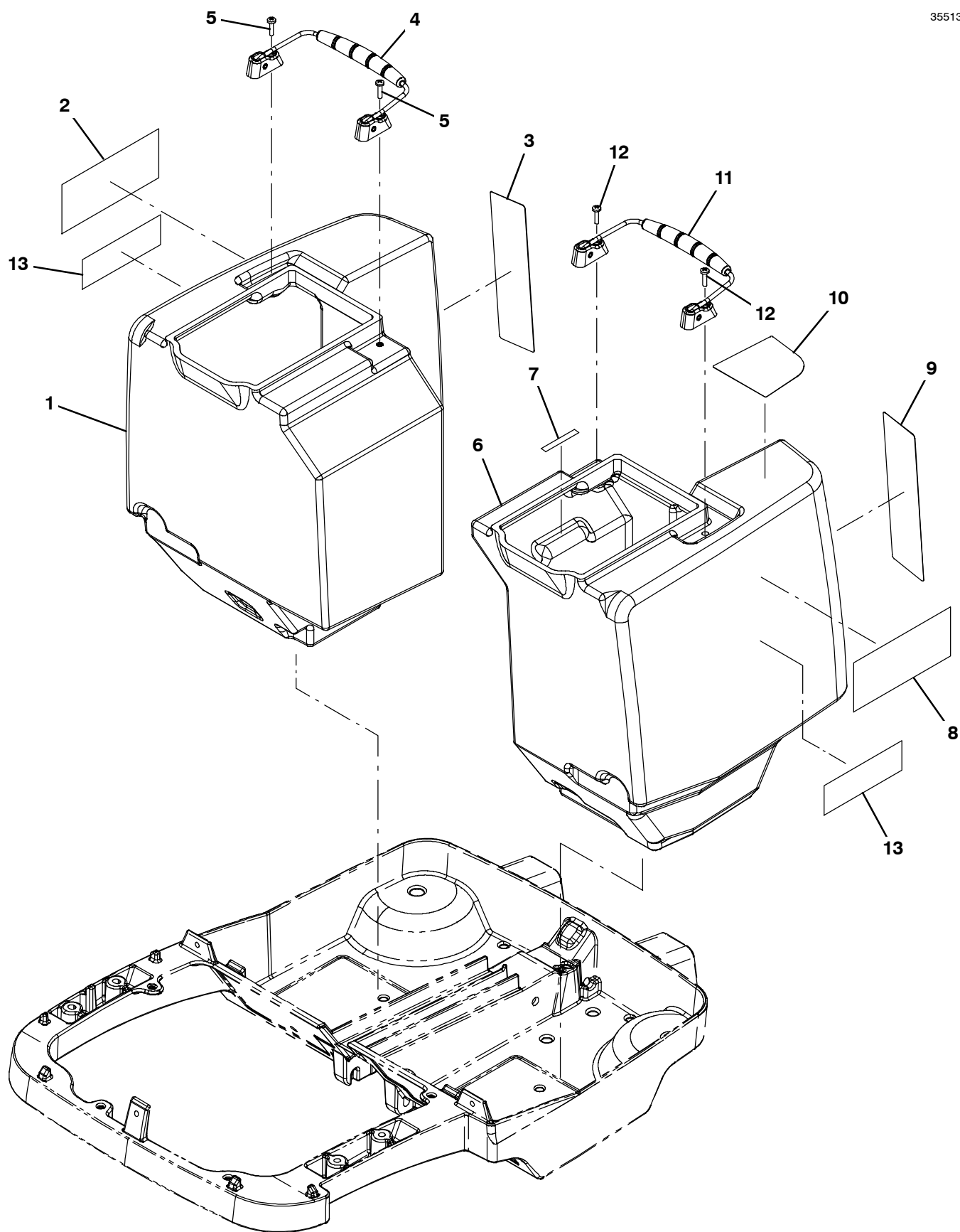


FRAME GROUP

Ref.	Part No.	Serial Number	Description	Qty.
1	1053149	(10000000- 20000000)	Cover, Frame, Rear	1
2	02931	(10000000- 20000000)	Nut, Hex, Lock, .50- 13, NI, Ss	2
3	1035137	(10000000- 20000000)	Pin, Clevis, Grvd 0.31d X 2.00l, Ss	2
4	1014918	(10000000- 20000000)	Wheel, 03.0d 0.88w 0.31b, W/ Bshg, Rbr	3
5	1035139	(10000000- 20000000)	Ring, Retaining, Ext, 0.31d, E- Type	2
6	1034013	(10000000- 20000000)	Frame (Machined)	1
7	1020341	(10000000- 20000000)	Screw, Hex, M8 X 1.25 X 20, Ss, Sems	4
8	601443	(10000000- 20000000)	Caster, Swivel, 3.0d 1.3w, .50- 13 Stem	2
9	08713	(10000000- 20000000)	Nut, Hex, Lock, M8 X 1.25, NI, Ss	1
10	140027	(10000000- 20000000)	Washer, Flat, 0.35b 0.75d .04, Ss	3
11	49826	(10000000- 20000000)	Screw, Hex, M8 X 1.25 X 16, NI, Ss	2
12	1034805	(10000000- 20000000)	Bracket, Bumper Wheel	1
13	30406	(10000000- 20000000)	Clip, Keeper	2
14	10632- 12	(10000000- 20000000)	Grommet, Rbr, 0.38id, F/0.5h, .12 Matl	2

RECOVERY AND SOLUTION TANKS GROUP

355138



RECOVERY AND SOLUTION TANKS GROUP

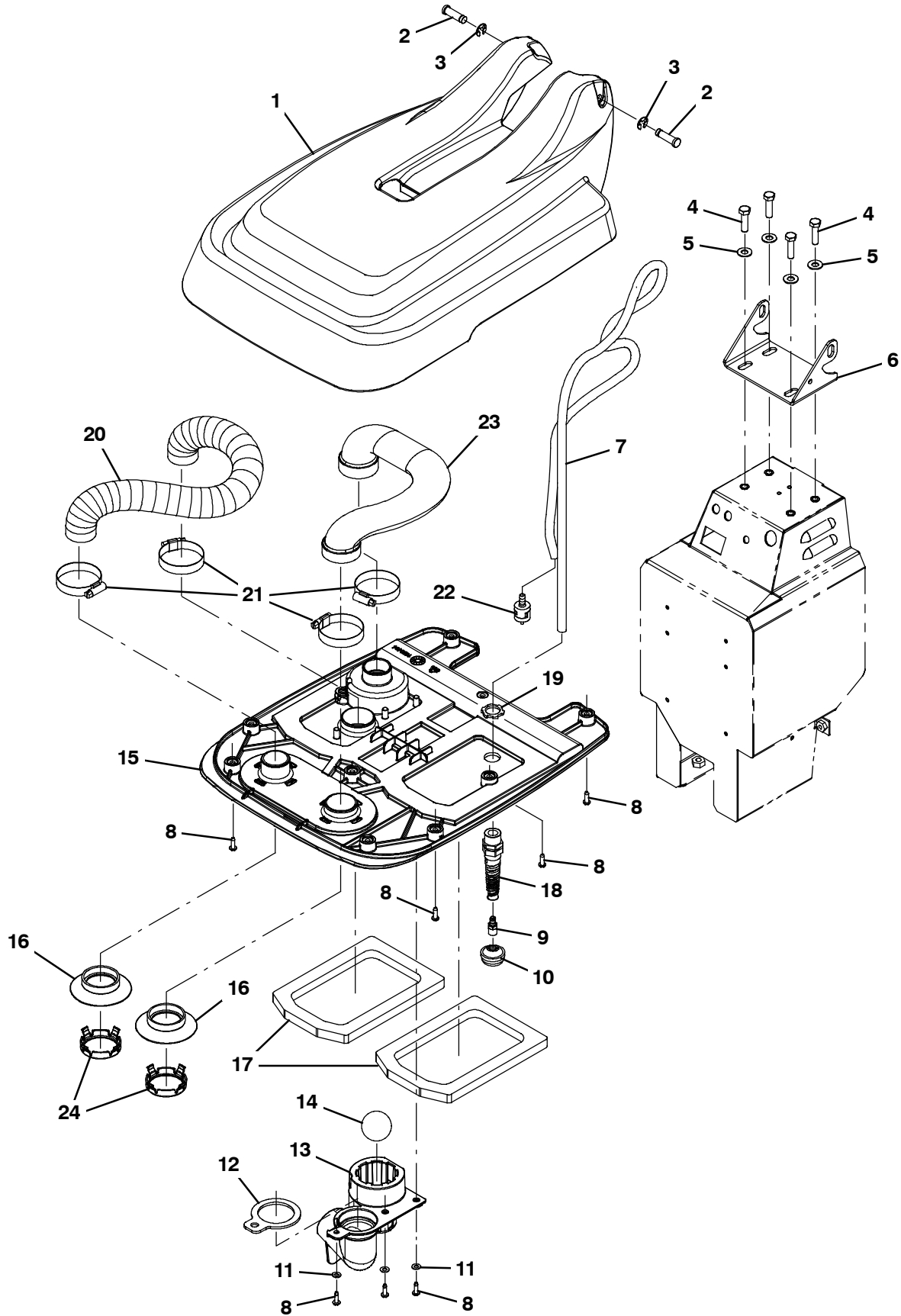
	Ref.	Part No.	Serial Number	Description	Qty.
▽	1	9008693	(10000000- 20000000)	Tank Kit, Recvy W/Labels [Ssb]	1
▲	2	1039498	(10000000- 20000000)	Label, Side [Speedscrub]	1
▲	3	1067554	(10000000- 20000000)	Label, Oprtn, Instr, Rh [T1b]	1
▲▽	4	9004285	(10000000- 20000000)	Handle Kit, Tank	1
▲▲	5	24265	(10000000- 20000000)	Screw, Pan, Phl, M4 X 0.70 X 16, Ss	2
▽	6	9008694	(10000000- 20000000)	Tank Kit, Soltn W/Labels [Ssb]	1
▲	7	1044865	(10000000- 20000000)	Label, Solution, Tank, Max. Fill, 3 Gal.	1
▲	8	1039498	(10000000- 20000000)	Label, Side [Speedscrub]	1
▲	9	1067553	(10000000- 20000000)	Label, Oprtn, Instr, Lh [T1b]	1
▲	10	1065771	(10000000- 20000000)	Label, Tank, Soltn	1
▲▽	11	9004285	(10000000- 20000000)	Handle Kit, Tank	1
▲▲	12	24265	(10000000- 20000000)	Screw, Pan, Phl, M4 X 0.70 X 16, Ss	2
	13	1066224	(10000000- 20000000)	Label, Lithium- Ion, Black [Speedscrub]	2

▽ ASSEMBLY

▲ INCLUDED IN ASSEMBLY

TANK COVER GROUP

355139

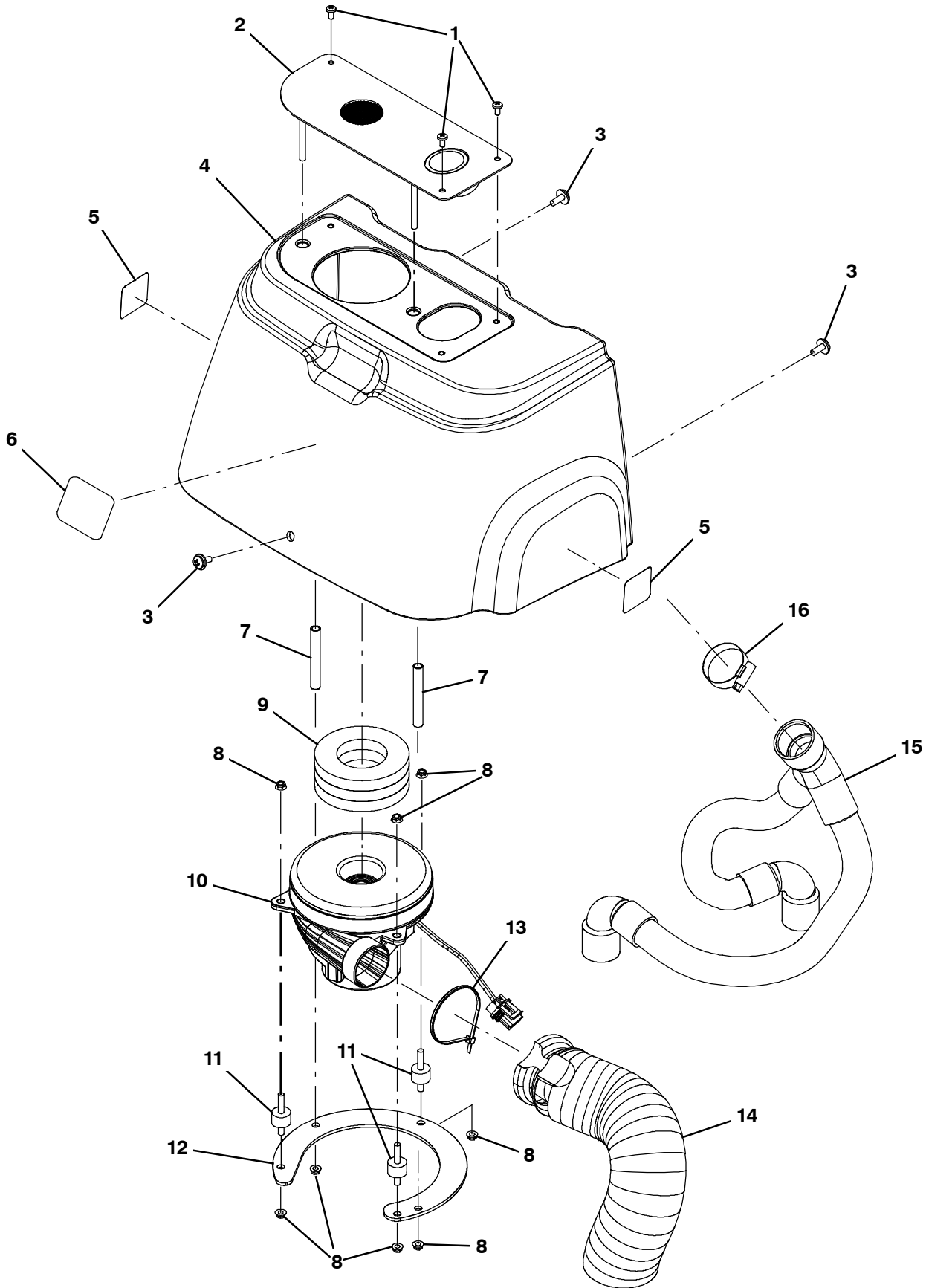


TANK COVER GROUP

Ref.	Part No.	Serial Number	Description	Qty.
1	1037759	(10000000- 20000000)	Cover , Tanks, Upper, Nobles	1
2	1035358	(10000000- 20000000)	Pin, Grvd, 0.375d, 1.25l	2
3	24555	(10000000- 20000000)	Ring, Retaining, Ext, 0.38d, [E- Ring]	2
4	1016399	(10000000- 20000000)	Screw, Hex, M8 X 1.25 X 30, NI, Ss	4
5	140027	(10000000- 20000000)	Washer, Flat, 0.35b 0.75d .04, Ss	4
6	1034346	(10000000- 20000000)	Bracket, Pivot, Cover, Mtg	1
7	1036063	(10000000- 20000000)	Hose, Soltn, .25 Id, .453 Od, 56.0 L	1
8	140340	(10000000- 20000000)	Screw, Pan, Phl, 10- 24 X 0.62, Ss[Typ25]	13
9	1042715	(10000000- 20000000)	Fitting, Brs, Str, Bm04/Pm02	1
10	1074694	(10000000- 20000000)	Filter, Tube, Soltn, 200mesh	1
11	140011	(10000000- 20000000)	Washer, Flat, 0.21b 0.45d .03, Ss	3
12	1051274	(10000000- 20000000)	Gasket, Shield, Float	1
13	1042277	(10000000- 20000000)	Shield, Float	1
14	1044370	(10000000- 20000000)	Ball, Float, W/O Cage	1
15	1050434	(10000000- 20000000)	Cover, Tank, Inner, Black	1
16	1036090	(10000000- 20000000)	Seal, Vacuum [Trex]	2
17	1052876	(10000000- 20000000)	Gasket, Tank	2
18	602849	(10000000- 20000000)	Strainrelief, Cord, Ele, Pm08, Blk Nyl	1
19	140504	(10000000- 20000000)	Nut, Lock, Conduit, Pm08	1
20	1037756	(10000000- 20000000)	Hose, Vacuum, 1.5od, 18.0l [Wire- Reinf]	1
21	140308	(10000000- 20000000)	Clamp, Hose, Wormdrive, 1.31- 2.25d, .50w	4
22	1059000	(10000000- 20000000)	Valve, Check, 0001psi Bm02/Bm04	1
23	1035866	(10000000- 20000000)	Hose, Recvy, Formed [Trex]	1
24	1054345	(10000000- 20000000)	Clip, Retaining, Seal	2

VACUUM FAN GROUP

355141



VACUUM FAN GROUP

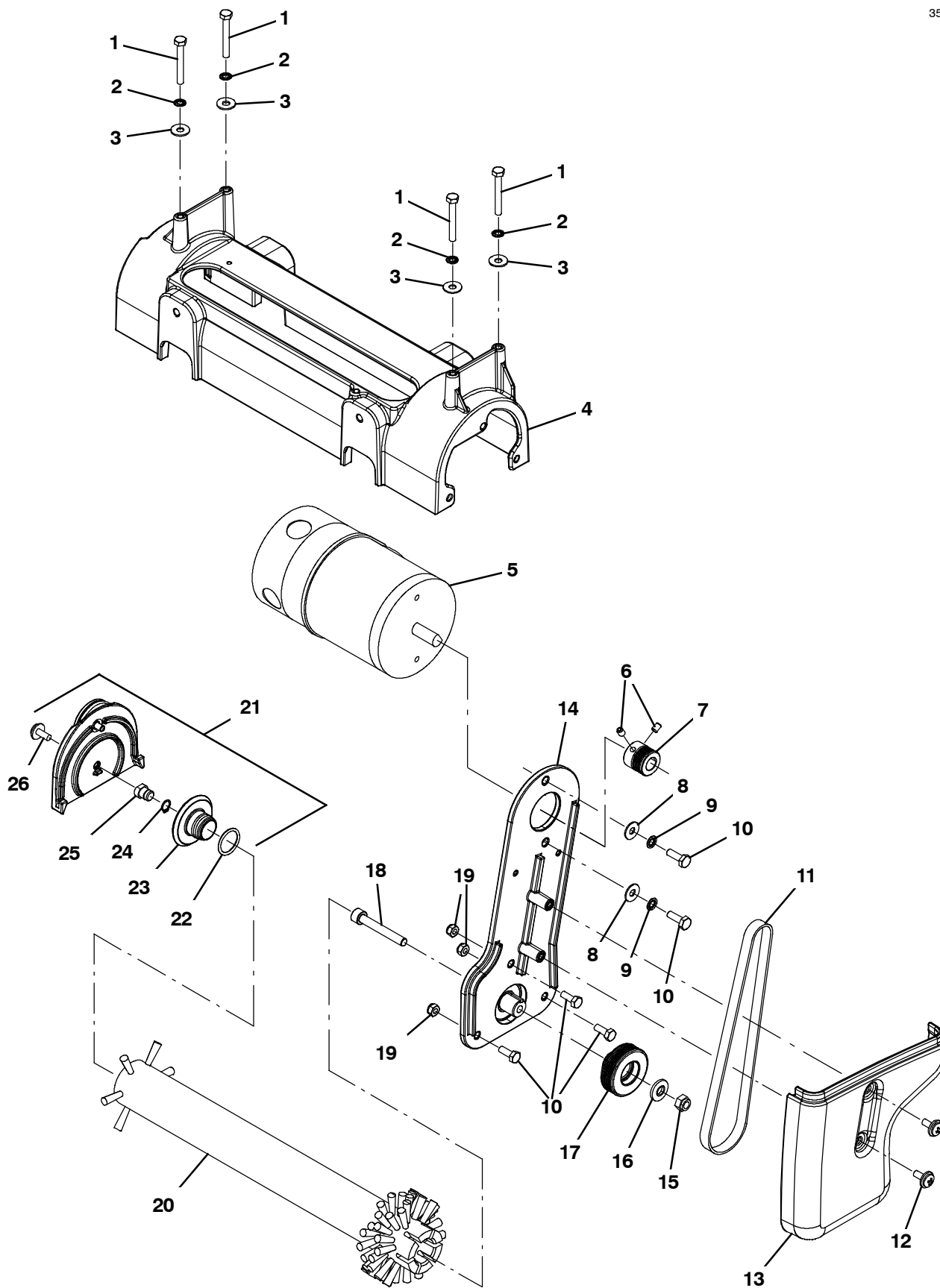
Ref.	Part No.	Serial Number	Description	Qty.
1	1026454	(10000000- 20000000)	Screw, Pan, Phl, M5 X 0.80 X 10, Ss	3
2	1048251	(10000000- 20000000)	Wldt, Plate, Mtg, Vacuum	1
3	1019349	(10000000- 20000000)	Screw, Trs, M6 X 1.00 X 16, Ss, Sems	3
▽	4	9004302	(10000000- 20000000) Shroud Kit, W/ Labels [Nobles 3 Gal]	1
▲	5	578769	(10000000- 20000000) Label, Parts, Moving [Textless]	2
▲	6	1034636	(10000000- 20000000) Label, Front, 3.00 [Nobles Icon]	1
7	1050480	(10000000- 20000000)	Spacer, 9.52od X 7.14id X 72.3l Ss	2
8	1040381	(10000000- 20000000)	Nut, Hex, Flng, M6 X 1.0, Ss [Serrated]	8
9	1053269	(10000000- 20000000)	Gasket, 38.1mm Th, 50.8mmid 95.25mmod	1
10	1048362	(10000000- 20000000)	Fan, Vacuum, Domel	1
11	1011093	(10000000- 20000000)	Isolator, Vib, .75d, M6 Stud Both Ends	3
12	1057236	(10000000- 20000000)	Bracket, Mtg, Vacuum	1
13	130773	(10000000- 20000000)	Tie, Cable, Nyl, 11.0l, .14w, 3.0 Max. D	1
14	390677	(10000000- 20000000)	Muffler, Exhaust, Vacfan, Long	1
15	1067430	(10000000- 20000000)	Hose Assy, Vacuum, Wye	1
16	11531	(10000000- 20000000)	Clamp, Hose, Wormdrive, 1.06- 2.00d, .56w	1

▽ ASSEMBLY

▲ INCLUDED IN ASSEMBLY

SCRUB HEAD GROUP

355142



SCRUB HEAD GROUP

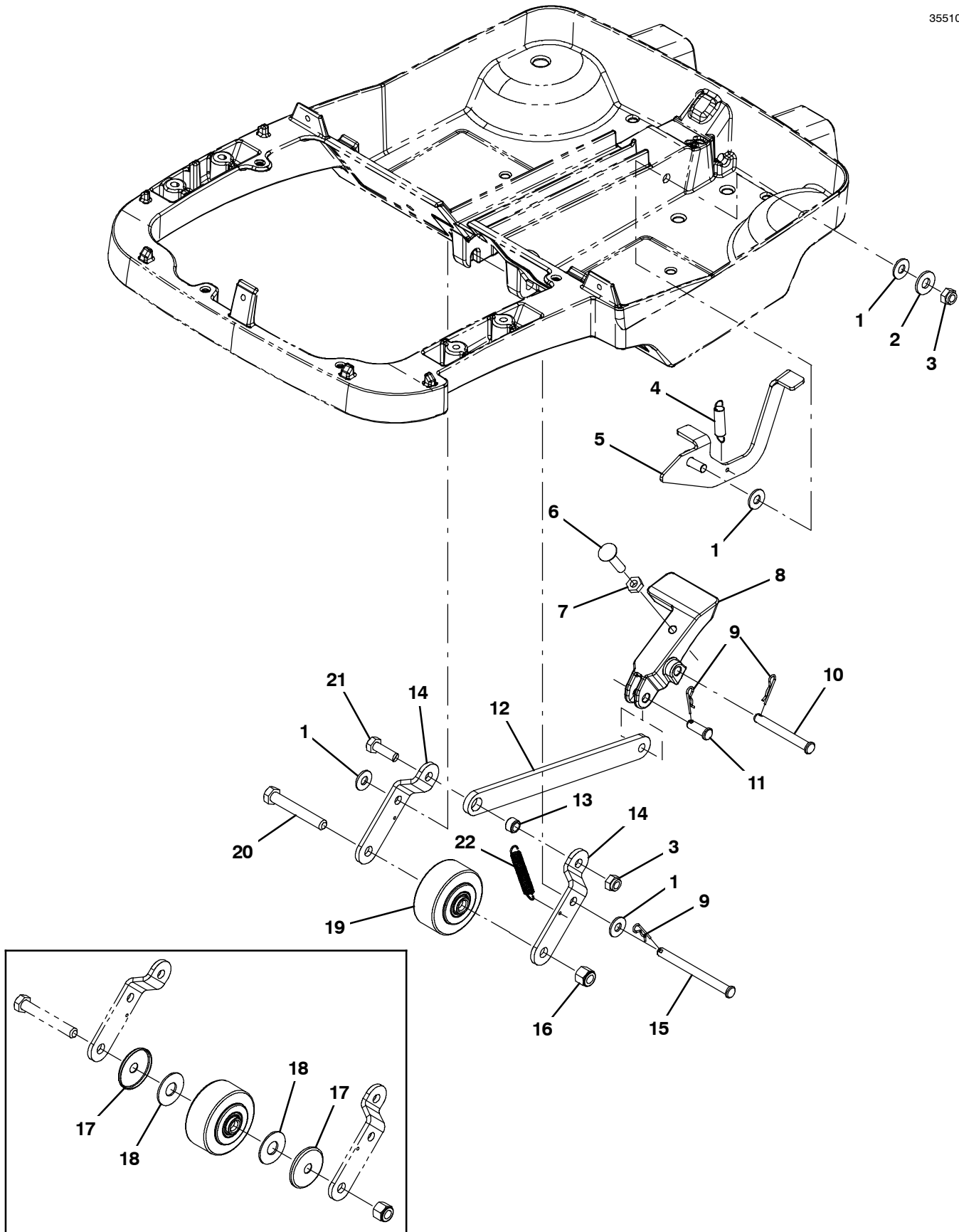
Ref.	Part No.	Serial Number	Description	Qty.	
1	1045325	(10000000-20000000)	Screw, Hex, M6 X 1.00 X 45, Ss	4	
2	07515	(10000000-20000000)	Washer, Lock, Int, 0.25, Ss	4	
3	01684	(10000000-20000000)	Washer, Flat, 0.27b 0.69d .05, Ss	4	
4	1034380	(10000000-20000000)	Housing, Brush, Sngl, 40cm	1	
5	1048393	(10000000-20000000)	Motor, 12vdc, 3.98 Dia. X 6.5 L	1	
6	09162	(10000000-20000000)	Screw, Set, Soc, M6 X 1.00 X 8, NI	2	
7	1063530	(10000000-20000000)	Sheave, 07grv, 25.8pd [Ph]	1	
8	01684	(10000000-20000000)	Washer, Flat, 0.27b 0.69d .05, Ss	2	
9	07515	(10000000-20000000)	Washer, Lock, Int, 0.25, Ss	2	
10	15678	(10000000-20000000)	Screw, Hex, .25-20 X 0.75, NI	5	
11	9004283	(10000000-20000000)	Belt Kit, W/ Installation Tool	1	
12	1019349	(10000000-20000000)	Screw, Trs, M6 X 1.00 X 16, Ss, Sems	2	
13	1064397	(10000000-20000000)	Cover, Belt, Spg (Single Roller)	1	
▽	14	9008296	(10000000-20000000)	Bracket Kit, Motor Mount	1
▲	15	08713	(10000000-20000000)	Nut, Hex, Lock, M8 X 1.25, NI, Ss	1
▲	16	41186	(10000000-20000000)	Washer, Flat, Belleville, .31	1
▲	17	1030625	(10000000-20000000)	Sheave, 07grv, 49.3pd	1
▲	18	1057476	(10000000-20000000)	Screw, Soc, M8 X 1.25 X 55, Ss	1
	19	08712	(10000000-20000000)	Nut, Hex, Lock, M6 X 1.00, NI, Ss	3
	20	1037197	(10000000-20000000)	Brush, Scrub, 89mm Od X 386mm, Nylon (Standard)	1
	20	1037277	(10000000-20000000)	Brush, Scrub, 89mm Od X 386mm, Poly (Optional)	1
	20	1037278	(10000000-20000000)	Brush, Scrub, 89mm Od X 386mm, Grit (Optional)	1
▽	21	9007962	(10000000-20000000)	Door Kit, Brush, W/ Hdwr	1
▲	22	1042312	(10000000-20000000)	Seal, Org, .070 X .875 Id, 020	1
▲	23	1030680	(10000000-20000000)	Hub, Idler, Brush	1
▲	24	01543	(10000000-20000000)	Ring, Retaining, Ext, 0.39d, Basic	1
▲	25	1030682	(10000000-20000000)	Shaft, Idler Plug	1
▲	26	1019349	(10000000-20000000)	Screw, Trs, M6 X 1.00 X 16, Ss, Sems	1

▽ ASSEMBLY

▲ INCLUDED IN ASSEMBLY

SCRUB HEAD LIFT GROUP

355106

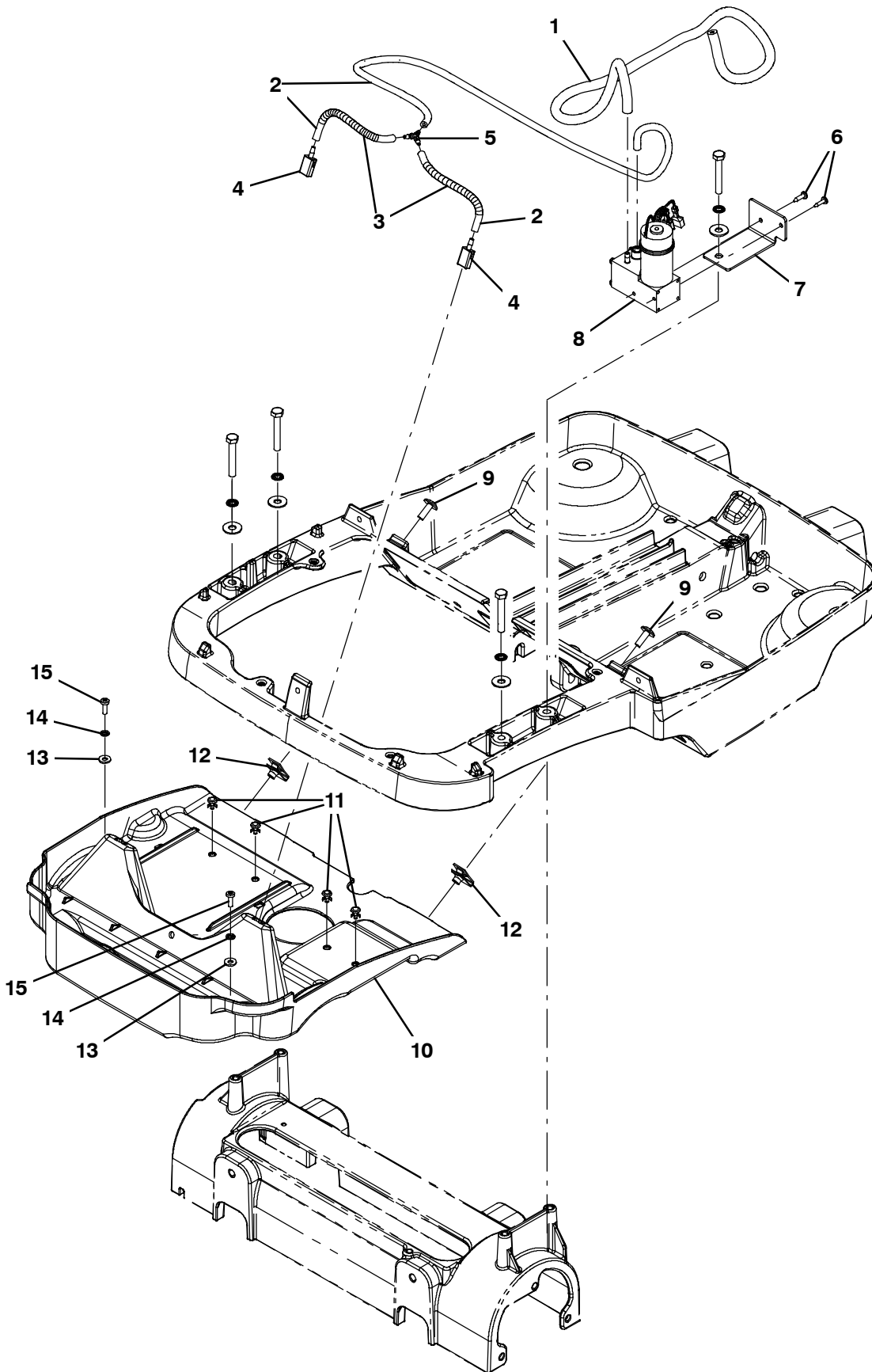


SCRUB HEAD LIFT GROUP

Ref.	Part No.	Serial Number	Description	Qty.
1	630446	(10000000- 20000000)	Washer, Flat, 0.31b 0.75d .06, Nyl	3
2	140027	(10000000- 20000000)	Washer, Flat, 0.35b 0.75d .04, Ss	1
3	08713	(10000000- 20000000)	Nut, Hex, Lock, M8 X 1.25, NI, Ss	2
4	605812	(10000000- 20000000)	Spring, Extn	1
5	1034420	(10000000- 20000000)	Lever, Pedal, Wheel Release	1
6	1053751	(10000000- 20000000)	Bolt, Carriage, .31- 18 X 1.25, Ss	1
7	140548	(10000000- 20000000)	Nut, Hex, Jam, Fin .31, Ss	1
8	1034376	(10000000- 20000000)	Pedal, Foot	1
9	08085	(10000000- 20000000)	Pin, Cotter, Hair, 0.31d .058 Wir	3
10	71274	(10000000- 20000000)	Pin, Clevis, 0.31d X 2.62l	1
11	386987	(10000000- 20000000)	Pin, Clevis, 0.31d X 0.88l	1
12	1034368	(10000000- 20000000)	Arm, Linkage, Transport	1
13	222516	(10000000- 20000000)	Sleeve, P/M, 0.32b 0.50d 0.3l [430ss]	1
14	1034371	(10000000- 20000000)	Bracket, Transport, Wheel	2
15	1034513	(10000000- 20000000)	Pin, Clevis, 0.31d X 3.50l	1
16	59156	(10000000- 20000000)	Nut, Hex, Lock, .38- 16, NI, Ss	1
17	1034351	(10000000- 20000000)	Guard, Thread, Wheel (NLA - Replaced by 1034355)	2
18	140045	(10000000- 20000000)	Washer, Flat, 0.51b 1.25d .06, Ss (NLA - Replaced by 1034355)	2
19	1034355	(10000000- 20000000)	Wheel, 02.5d 1.25w 0.38b, Rbr, Gray	1
20	27992	(10000000- 20000000)	Screw, Hex, .38- 16 X 2.50, G5	1
21	09010	(10000000- 20000000)	Screw, Hex, M8 X 1.25 X 25, Ss	1
22	140402	(10000000- 20000000)	Spring, Extn, 0.375od 0.045wir 01.8l, Mw	1

SOLUTION GROUP

355143

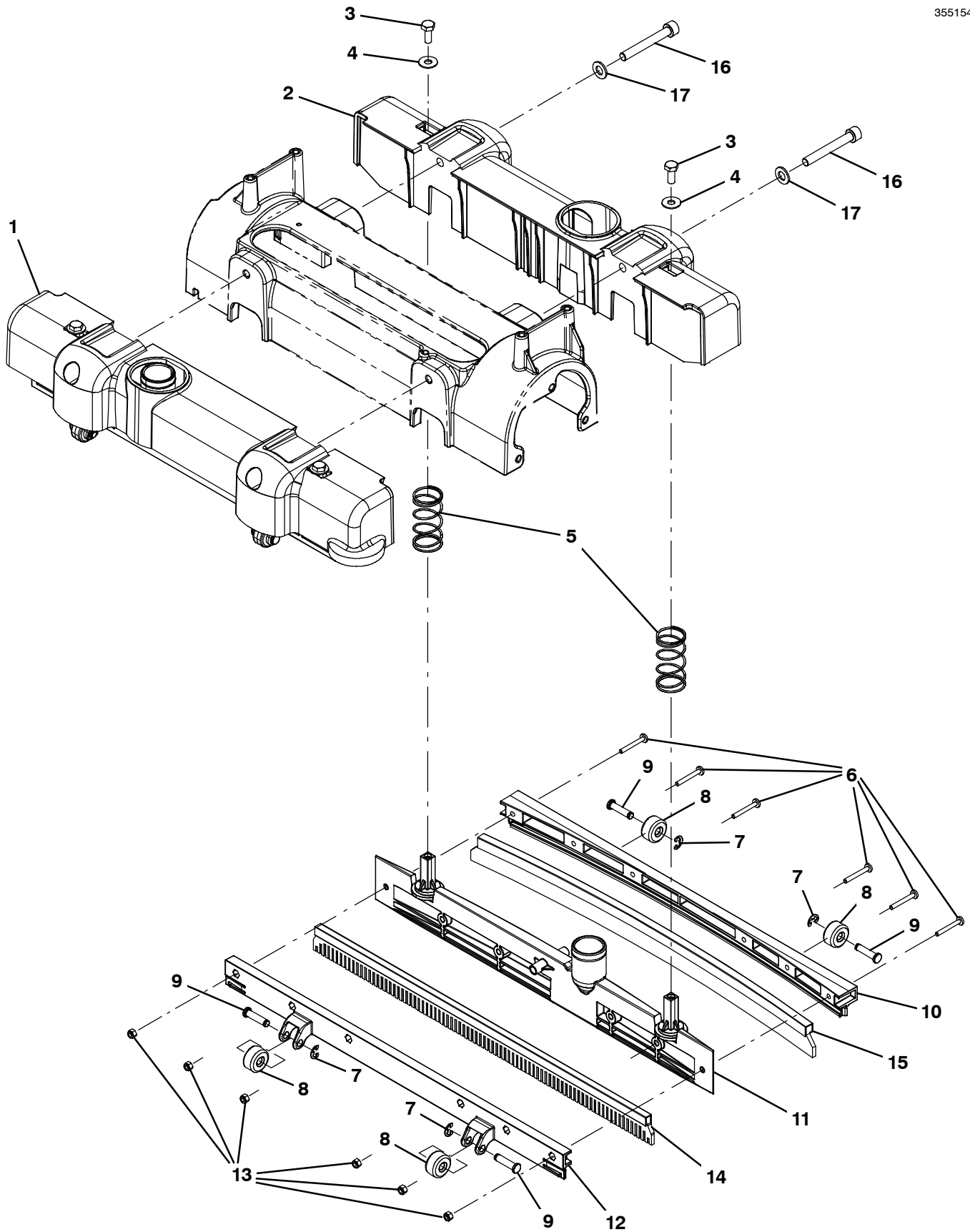


SOLUTION GROUP

Ref.	Part No.	Serial Number	Description	Qty.
1	9006630	(10000000- 20000000)	Tube, 3.175 Id 9.0 Od 1120mm L	1
2	9006631	(10000000- 20000000)	Tube, 1/8" Id, 780mm L	1
3	160123	(10000000- 20000000)	Sleeve, Heatshrink, .025, Bulk	2
4	1049141	(10000000- 20000000)	Nozzle, Fluidic	2
5	1055763	(10000000- 20000000)	Fitting, Plstc, Y, Bm02/Bm02/Bm02	1
6	222267	(10000000- 20000000)	Screw, Pan, Phl, 06- 20 X 0.50, Fmg/Ab	2
7	1048289	(10000000- 20000000)	Bracket, Mtg, Pump, Soltn	1
8	1048528	(10000000- 20000000)	Pump, Diaphragm, Liquid	1
9	140824	(10000000- 20000000)	Screw, Trs, .25- 20 X 0.62, Phl, Ss	2
10	1067972	(10000000- 20000000)	Shrd, Splash, Nozzle	1
11	578852	(10000000- 20000000)	Rivet, Plstc, .200d X 0.20, Snap	4
12	82138	(10000000- 20000000)	Nut, Spd, Clip, .25- 20 [.025- .150]	2
13	41579	(10000000- 20000000)	Washer, Flat, 08, Ss	2
14	02938	(10000000- 20000000)	Washer, Lock, Int, 08, Ss	2
15	579237	(10000000- 20000000)	Screw, Pan, Phl, M4 X 0.70 X 12, Ss	2

SQUEEGEE GROUP, FRONT AND REAR

355154



SQUEEGEE GROUP, FRONT AND REAR

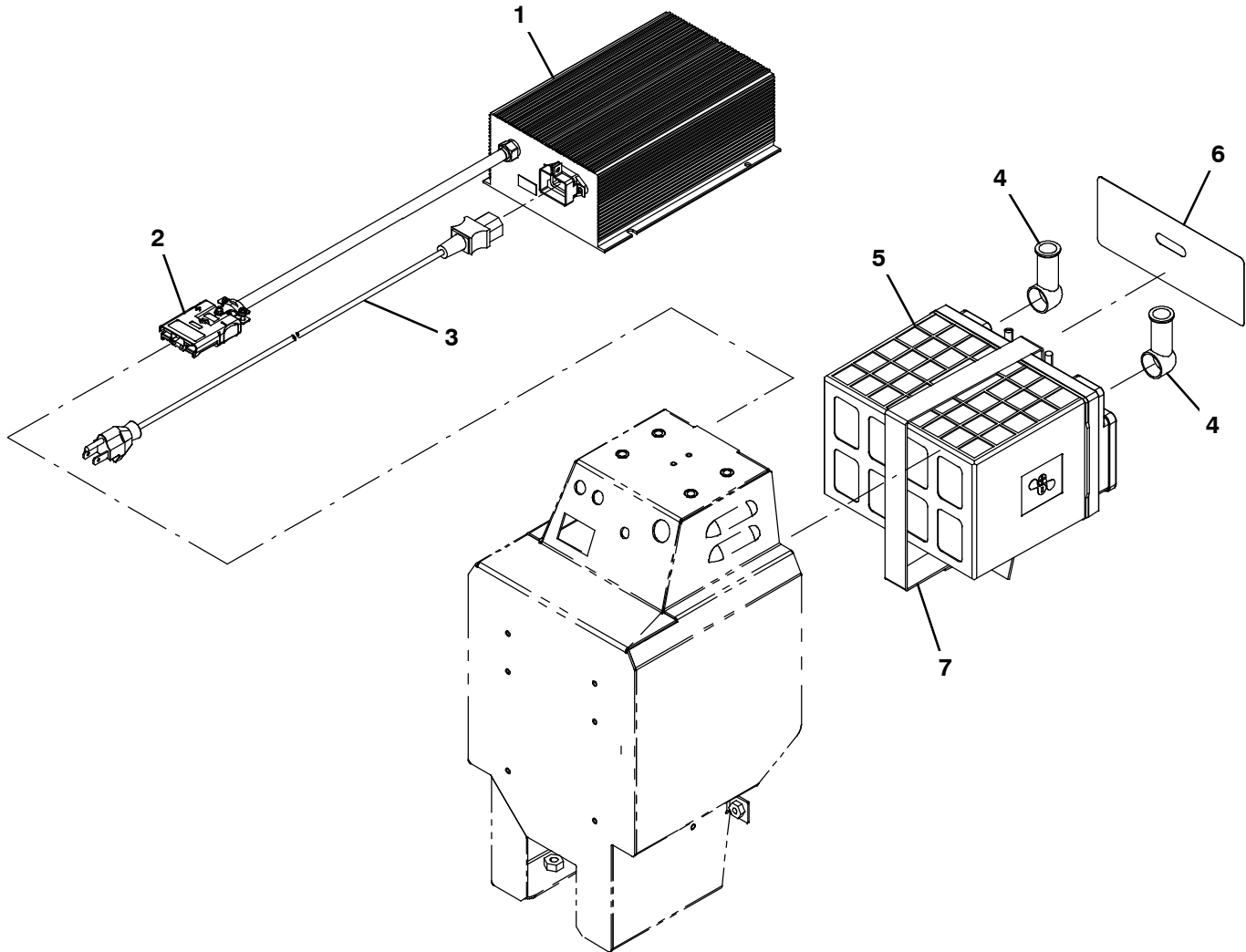
Ref.	Part No.	Serial Number	Description	Qty.
▽	1	9009283	(10000000- 20000000) Squeegee Assy [T1b Afmkt]	2
▲	2	1034109	(10000000- 20000000) Housing, Squeegee	2
▲	3	01697	(10000000- 20000000) Screw, Hex, .25- 20 X 0.62, Ss	4
▲	4	01684	(10000000- 20000000) Washer, Flat, 0.27b 0.69d .05, Ss	4
▲	5	1030427	(10000000- 20000000) Spring, Cmpr, 0.92id .05wir 02.0l	4
▲	6	33931	(10000000- 20000000) Screw, Pan, Phl, M4 X 0.70 X 30, Ss	12
▲▽		9008581	(10000000- 20000000) Wheel Kit, Sqge, W/ Hdwr	1
▲▲	7	1035647	(10000000- 20000000) Ring, Retaining, Ext, 0.25", [E- Ring]	8
▲▲	8	1030852	(10000000- 20000000) Roller, Squeegee	8
▲▲	9	1065608	(10000000- 20000000) Pin, Grv, 6.22d, 23.0l, Ss	8
▲	10	1049957	(10000000- 20000000) Retainer, Squeegee, Outer	2
▲	11	1049358	(10000000- 20000000) Frame, Sqge, 44cm [Newt]	2
▲	12	1057243	(10000000- 20000000) Retainer, Squeegee, Inner	2
▲	13	33932	(10000000- 20000000) Nut, Hex, Lock, M4 X 0.70, NI, Ss	12
	14	1049397	(10000000- 20000000) Blade Assy, Sqge, Ure, Millable	2
	15	1064751	(10000000- 20000000) Blade Assy, Sqge, Ure, Cast, 4.2thk	2
	16	09294	(10000000- 20000000) Screw, Soc, M8 X 1.25 X 60, 12.9	4
	17	39349	(10000000- 20000000) Washer, Flat, 0.31, Sae	4

▽ ASSEMBLY

▲ INCLUDED IN ASSEMBLY

BATTERY AND CHARGER GROUP (LITHIUM)

355144



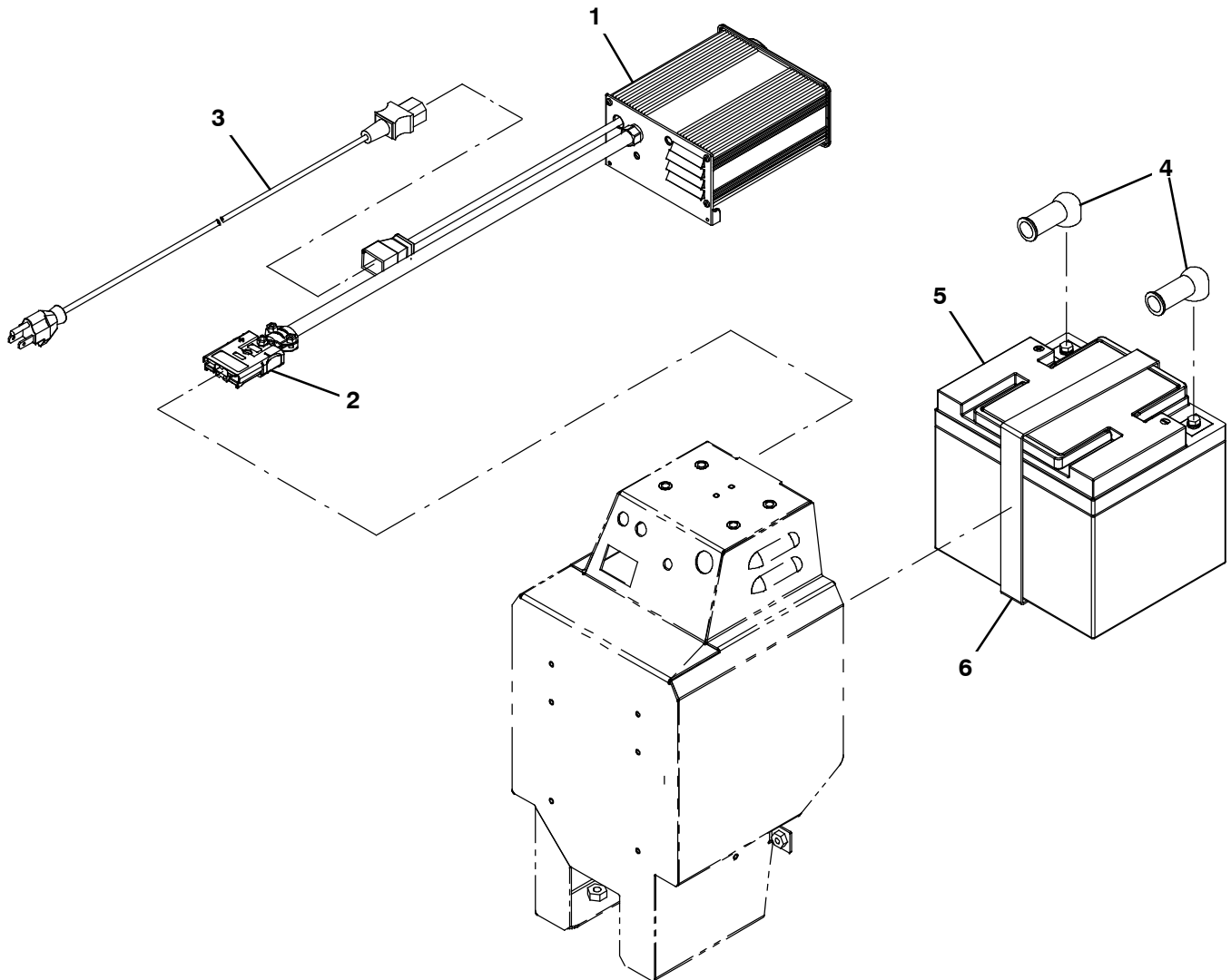
Ref.	Part No.	Serial Number	Description	Qty.	
1	1065754	(10000000-20000000)	Charger, 12vdc, 16a, 120/240vdc [Li- Ion]	1	
2	1066279	(10000000-20000000)	Plug Kit, Chrgr, T1b [Psbbs 75x]	1	
3	1044067	(10000000-20000000)	Cord, Power, 16/3 Blk [2.5meter, Us/Jpn]	1	
3	1026325	(10000000-20000000)	Cord, Power, 1.0mm2/3 Blk[2.5meter, Aus]	1	
3	1044068	(10000000-20000000)	Cord, Power, Blk [2.5meter, Ce]	1	
3	1044069	(10000000-20000000)	Cord, Power, Blk [2.5meter, Uk]	1	
4	611221	(10000000-20000000)	Boot, Terminal, Battery, 25.4mm, Blk	2	
▽	5	9008690	(10000000-20000000)	Battery Replmt Kit, [Li+]	1
▲	6	1067699	(10000000-20000000)	Label, Battery, Li- Ion	1
	7	1065070	(10000000-20000000)	Strap, Poly, Webbing 1.0 X 28.0	1
	N/S	1063936	(10000000-20000000)	Harness, Jumper [Phantom Pi Lithium]	1

▽ ASSEMBLY

▲ INCLUDED IN ASSEMBLY

BATTERY AND CHARGER GROUP (AGM)

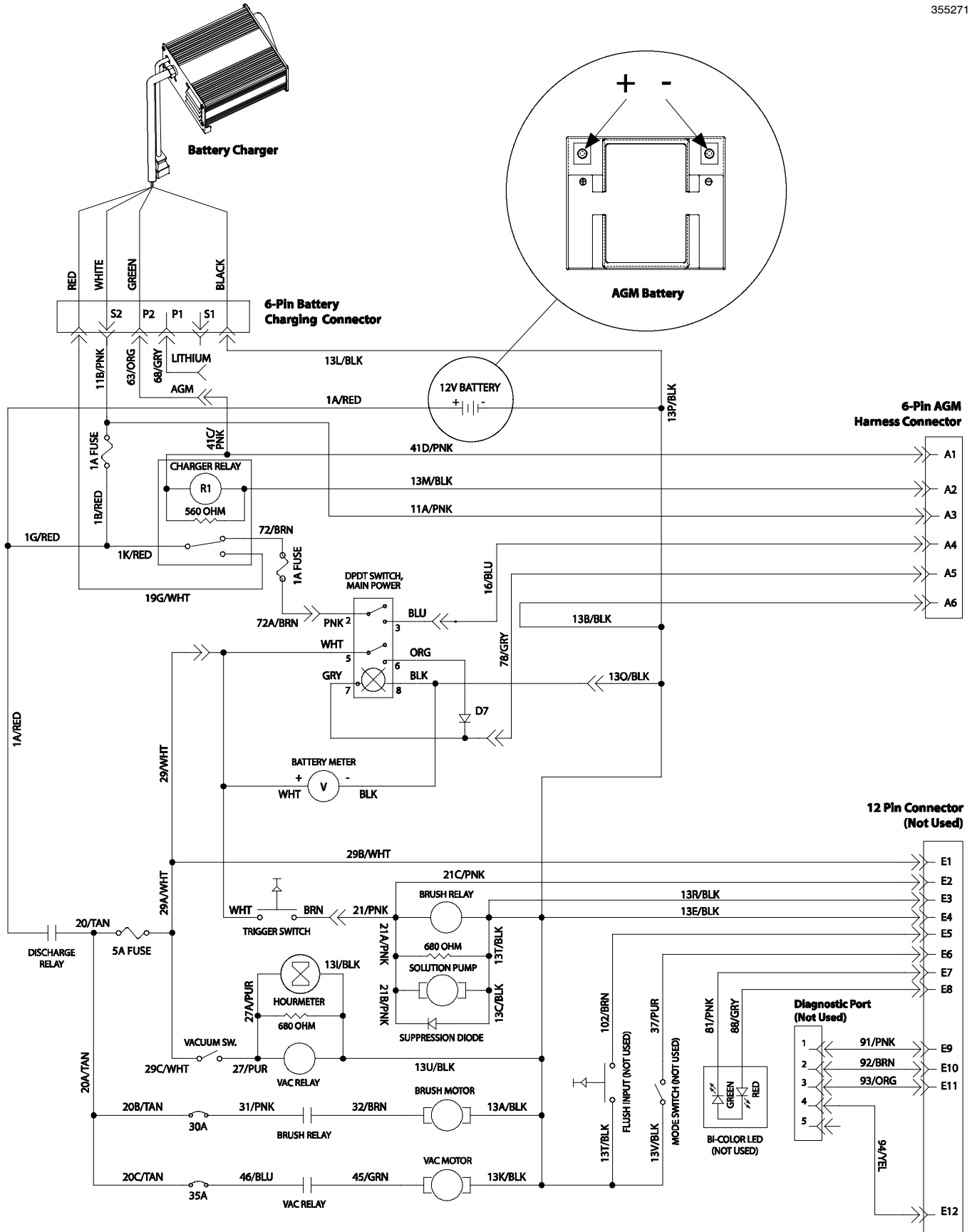
355145



Ref.	Part No.	Serial Number	Description	Qty.
1	1067790	(10000000-20000000)	Charger, Battery, 12vdc [Spe Eu & Na]	1
2	1066279	(10000000-20000000)	Plug Kit, Chrgr, T1b [Psbbs 75x]	1
3	1044067	(10000000-20000000)	Cord, Power, 16/3 Blk [2.5meter, Us/Jpn]	1
3	1026325	(10000000-20000000)	Cord, Power, 1.0mm2/3 Blk[2.5meter, Aus]	1
3	1044068	(10000000-20000000)	Cord, Power, Blk [2.5meter, Ce]	1
3	1044069	(10000000-20000000)	Cord, Power, Blk [2.5meter, UK]	1
4	611221	(10000000-20000000)	Boot, Terminal, Battery, 25.4mm, Blk	2
5	1065086	(10000000-20000000)	Battery, 12vdc 0050ah	1
6	1065070	(10000000-20000000)	Strap, Poly, Webbing 1.0 X 28.0	1
N/S	1069703	(10552860-20000000)	Harness, Jumper [Phantom Agm / Tppl]	1
N/S	1064899	(10000000-10552859)	Harness, Jumper [Phantom Agm / Tppl] (Replaced by 1069703)	1

ELECTRICAL DIAGRAM, AGM BATTERY

355271



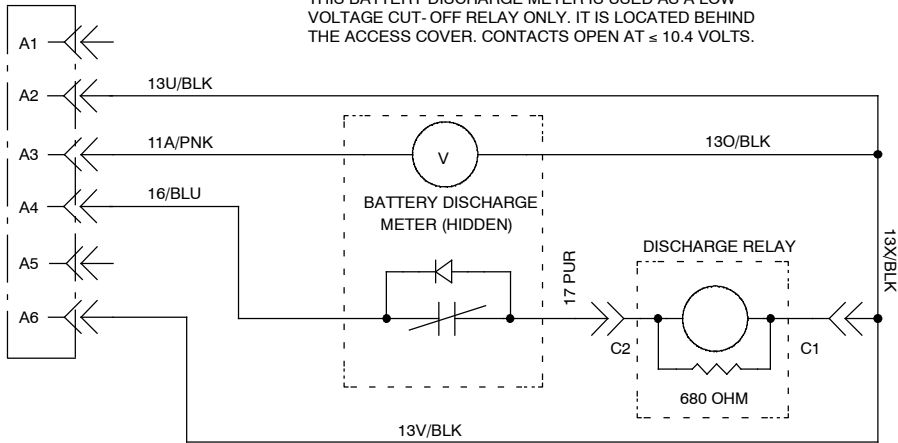
ELECTRICAL DIAGRAM, AGM BATTERY - CONT'D

355272

Early AGM Models

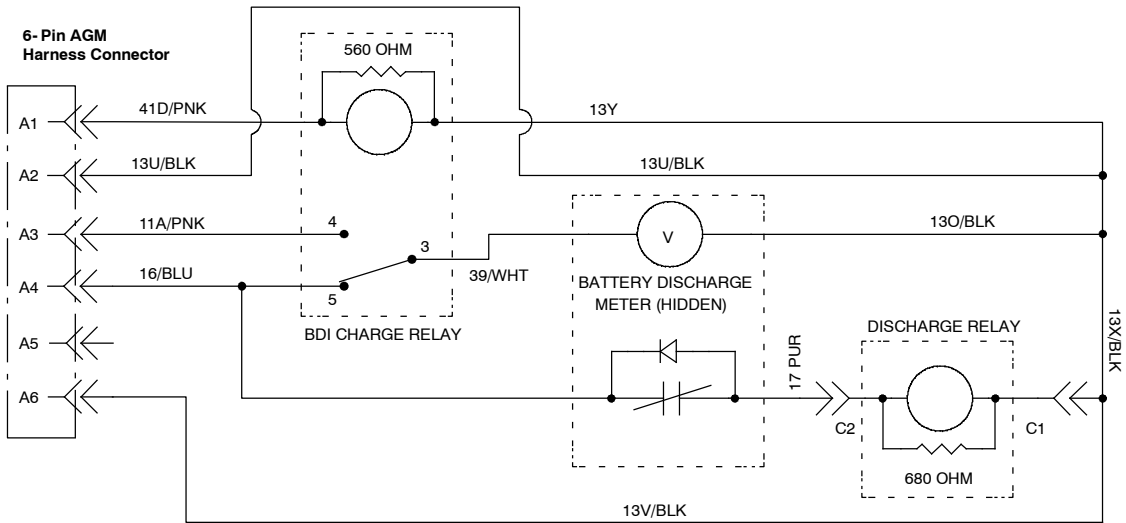
6-Pin AGM
Harness Connector

NOTE:
THIS BATTERY DISCHARGE METER IS USED AS A LOW
VOLTAGE CUT-OFF RELAY ONLY. IT IS LOCATED BEHIND
THE ACCESS COVER. CONTACTS OPEN AT ≤ 10.4 VOLTS.



Late AGM Models

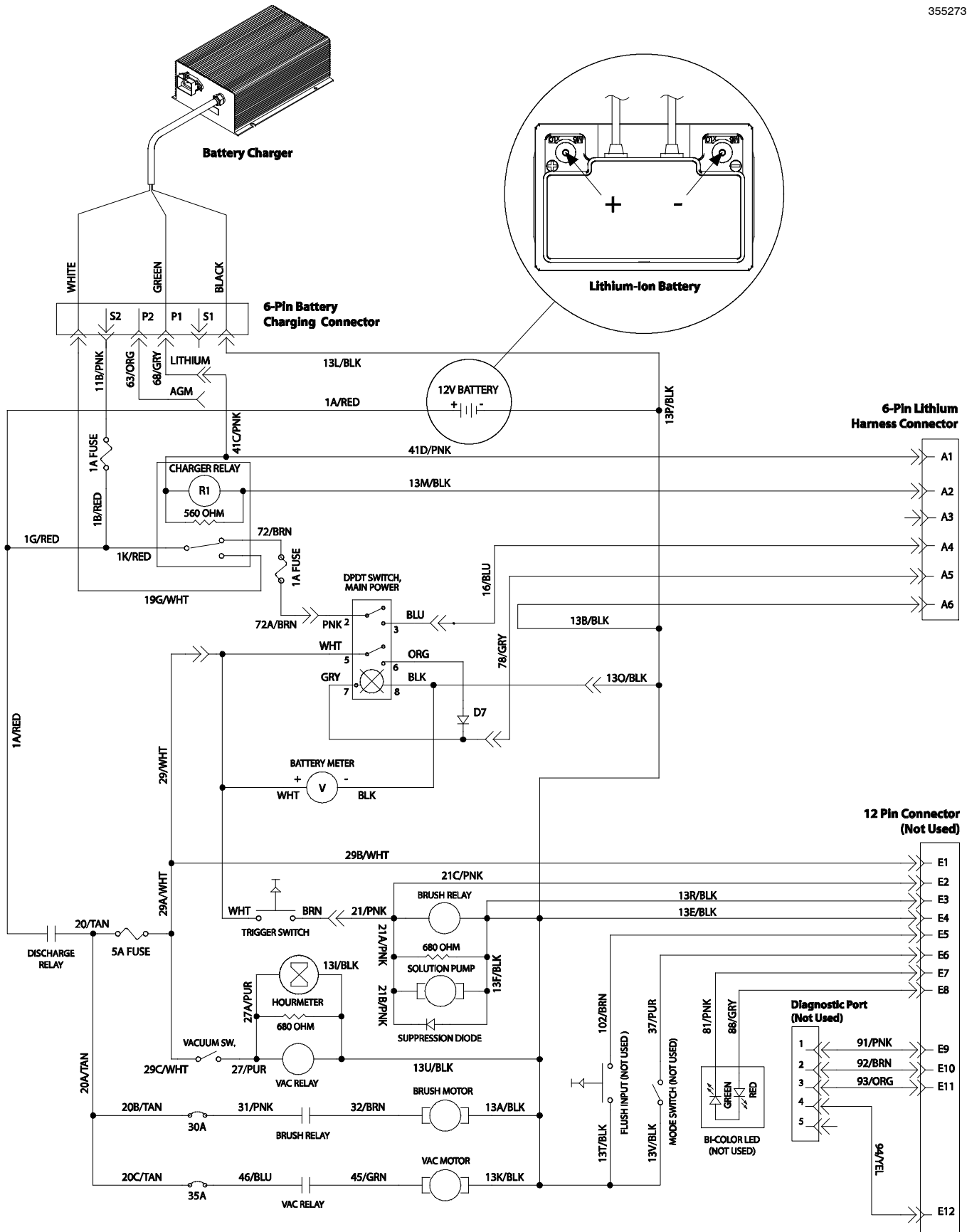
6-Pin AGM
Harness Connector



NOTE:
THIS BATTERY DISCHARGE METER IS USED AS A LOW
VOLTAGE CUT-OFF RELAY ONLY. IT IS LOCATED BEHIND
THE ACCESS COVER. CONTACTS OPEN AT ≤ 10.4 VOLTS.

ELECTRICAL DIAGRAM, LITHIUM BATTERY

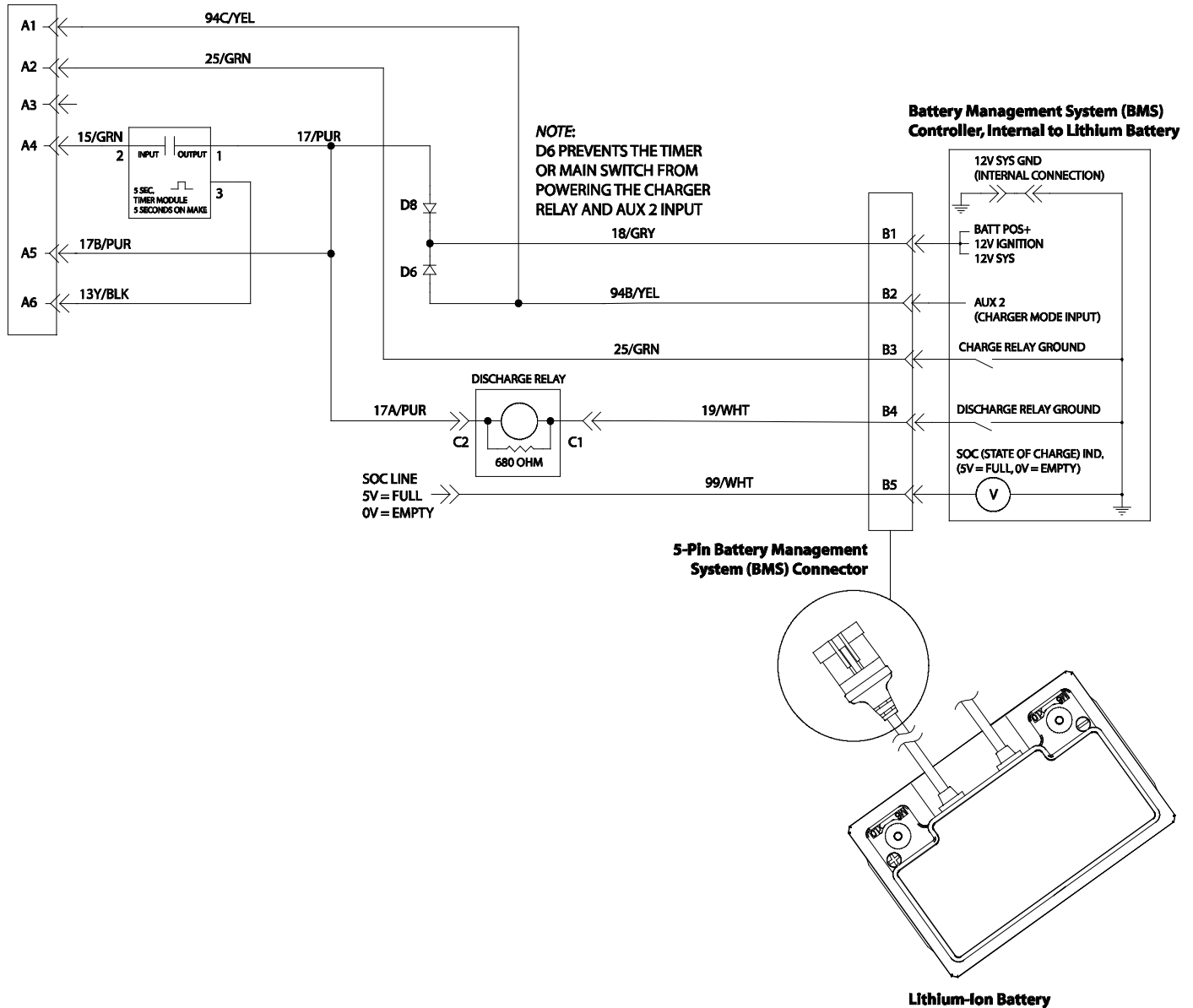
355273



ELECTRICAL DIAGRAM, LITHIUM BATTERY - CONT'D

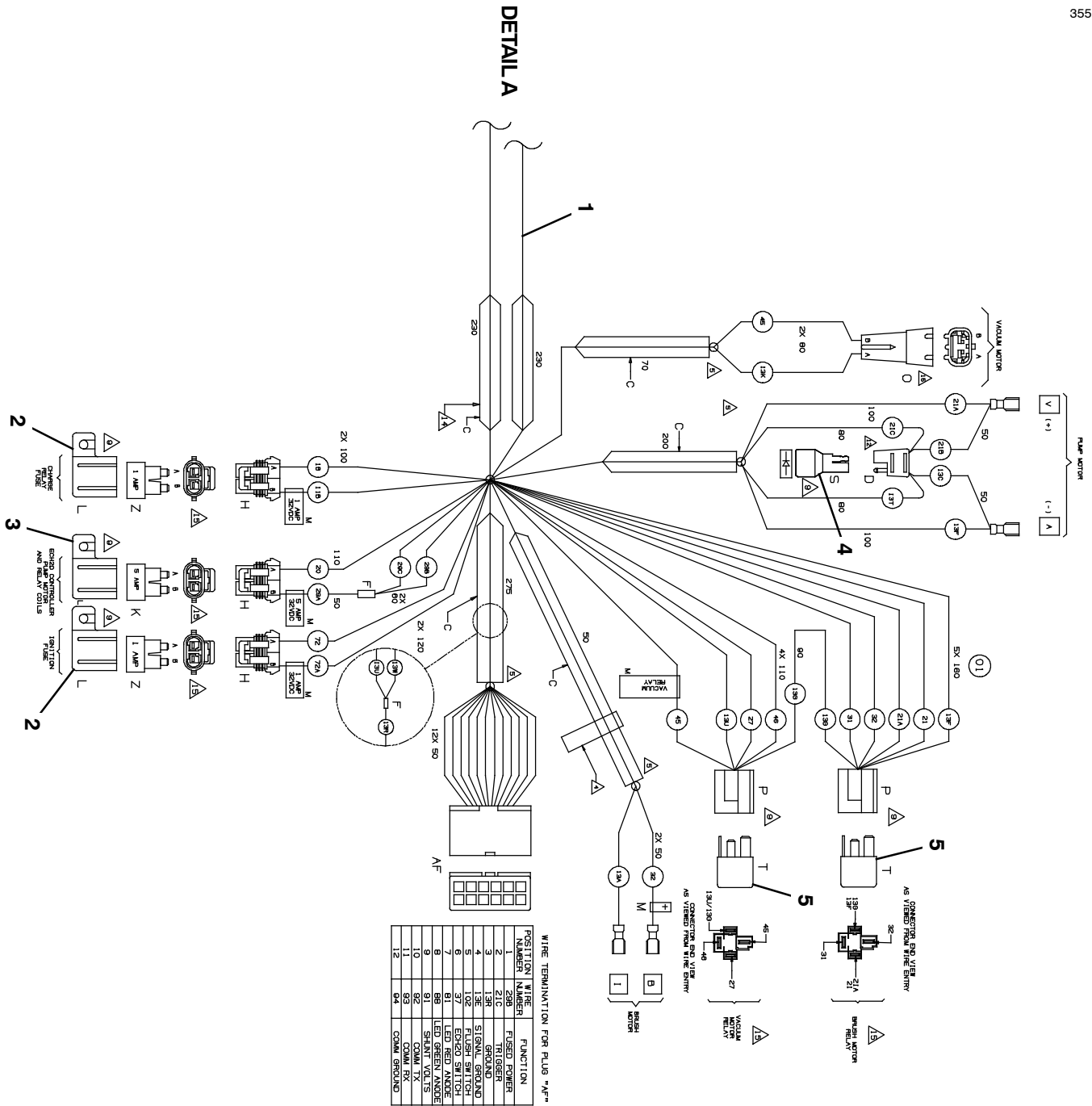
355274

6-Pin Lithium Harness Connector



WIRE HARNESS, MAIN - CONT'D

355147



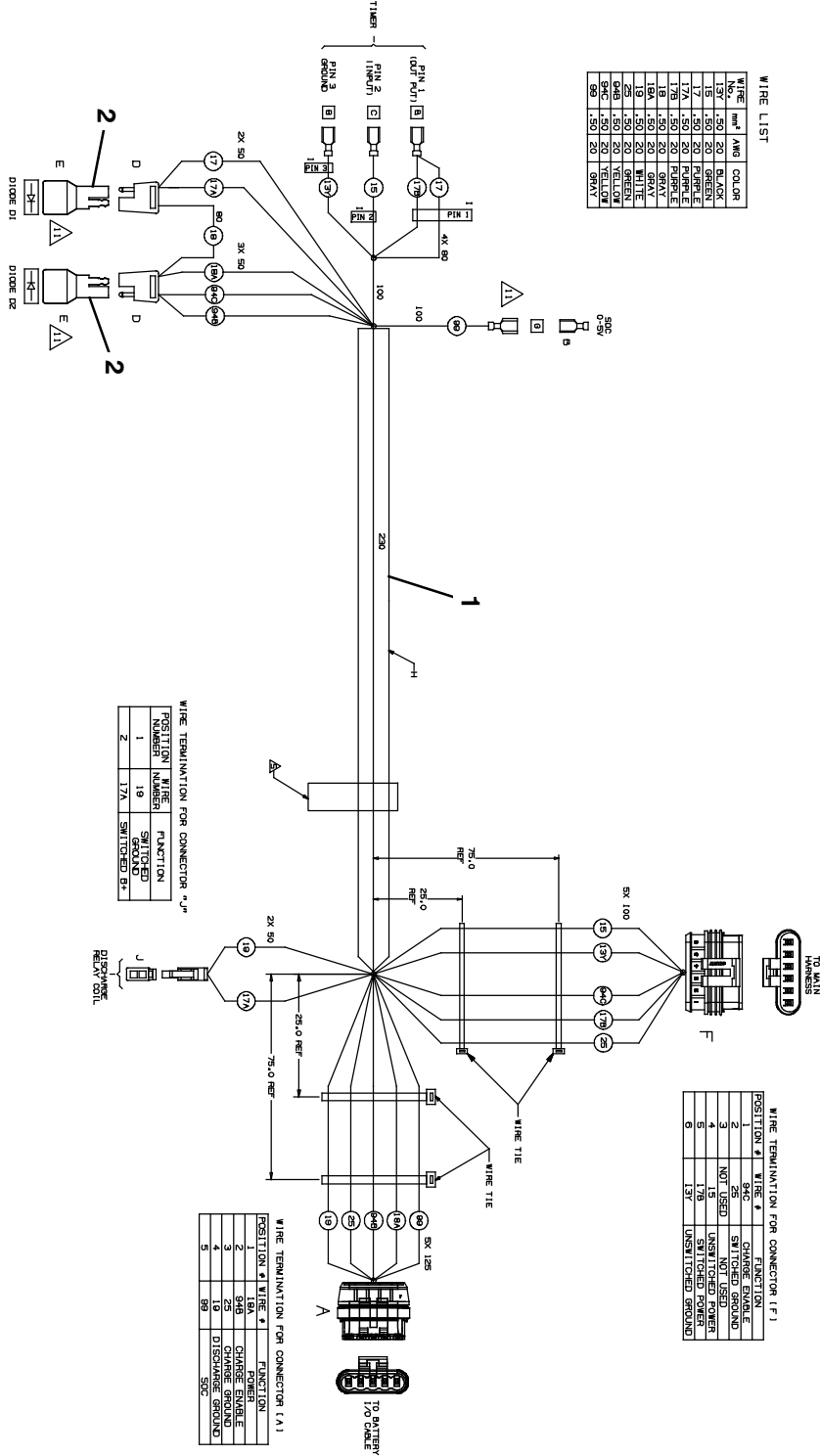
Ref.	Part No.	Serial Number	Description	Qty.
▽	1	1064897 (1000000- 2000000)	Harness, Chassis, 12 Volt [T1b]	1
▲	2	1052127 (1000000- 2000000)	Fuse, Blade, 001a, 32vdc	2
▲	3	1016029 (1000000- 2000000)	Fuse, Blade, 005a, 32vdc	1
▲	4	222290 (1000000- 2000000)	Diode, Ele, Plug	1
▲	5	1060940 (1000000- 2000000)	Contact, 12vdc, 080a, Spst, No	3
▲	6	1066293 (1000000- 2000000)	Relay, 12vdc, 040a, Spdt	1

▽ ASSEMBLY

▲ INCLUDED IN ASSEMBLY

WIRE HARNESS, JUMPER (LITHIUM)

355148



WIRE LIST

WIRE NO.	WIRE	COLOR
1	50	BLACK
2	50	RED
3	50	GREEN
4	50	ORANGE
5	50	YELLOW
6	50	PURPLE
7	50	WHITE
8	50	GRAY
9	50	GRAY
10	50	GRAY
11	50	WHITE
12	50	WHITE
13	50	YELLOW
14	50	YELLOW
15	50	YELLOW
16	50	YELLOW
17	50	YELLOW
18	50	YELLOW
19	50	GRAY
20	50	GRAY
21	50	GRAY
22	50	GRAY
23	50	GRAY
24	50	GRAY
25	50	GRAY
26	50	GRAY
27	50	GRAY
28	50	GRAY
29	50	GRAY
30	50	GRAY
31	50	GRAY
32	50	GRAY
33	50	GRAY
34	50	GRAY
35	50	GRAY
36	50	GRAY
37	50	GRAY
38	50	GRAY
39	50	GRAY
40	50	GRAY
41	50	GRAY
42	50	GRAY
43	50	GRAY
44	50	GRAY
45	50	GRAY
46	50	GRAY
47	50	GRAY
48	50	GRAY
49	50	GRAY
50	50	GRAY

WIRE TERMINATION FOR CONNECTOR "J"

POSITION NUMBER	WIRE NUMBER	FUNCTION
1	19	SWITCHED GROUND
2	17A	SWITCHED G+

WIRE TERMINATION FOR CONNECTOR (F)

POSITION #	WIRE #	FUNCTION
1	94C	CHARGE GROUND
2	25	SWITCHED GROUND
3	NO. 15	UNSWITCHED POWER
4	17B	SWITCHED POWER
5	137	UNSWITCHED GROUND
6		

WIRE TERMINATION FOR CONNECTOR (A)

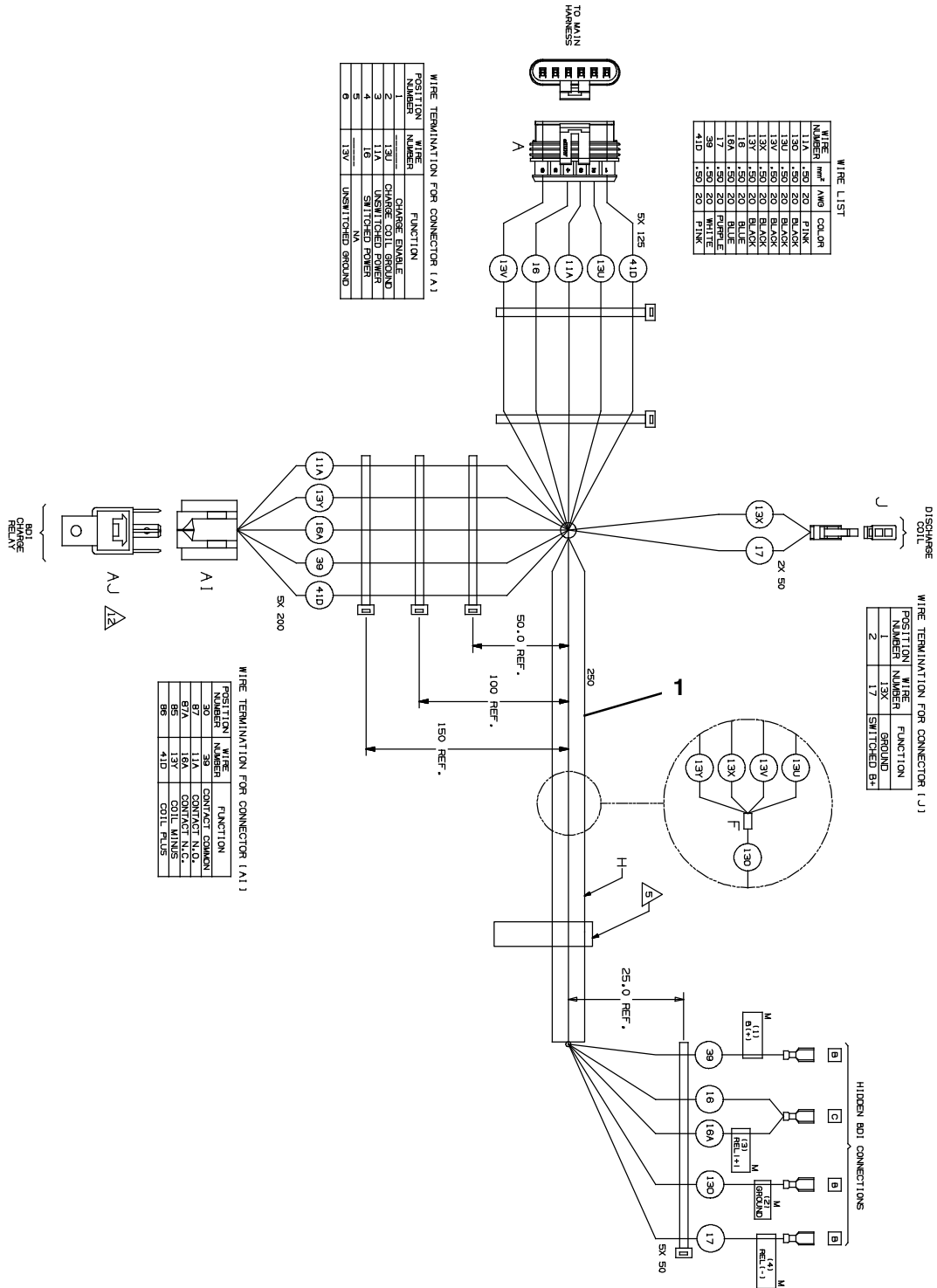
POSITION #	WIRE #	FUNCTION
1	54	CHARGE GROUND
2	54	CHARGE GROUND
3	25	CHARGE GROUND
4	19	DISCHARGE GROUND
5	99	DISCHARGE GROUND

Ref.	Part No.	Serial Number	Description	Qty.
▽	1	1063936	(10000000- 20000000) Harness, Jumper [Phantom Pi Lithium]	1
▲	2	222290	(10000000- 20000000) Diode, Ele, Plug	2

▽ ASSEMBLY
▲ INCLUDED IN ASSEMBLY

WIRE HARNESS, JUMPER (AGM) (S/N 10552859-2000000)

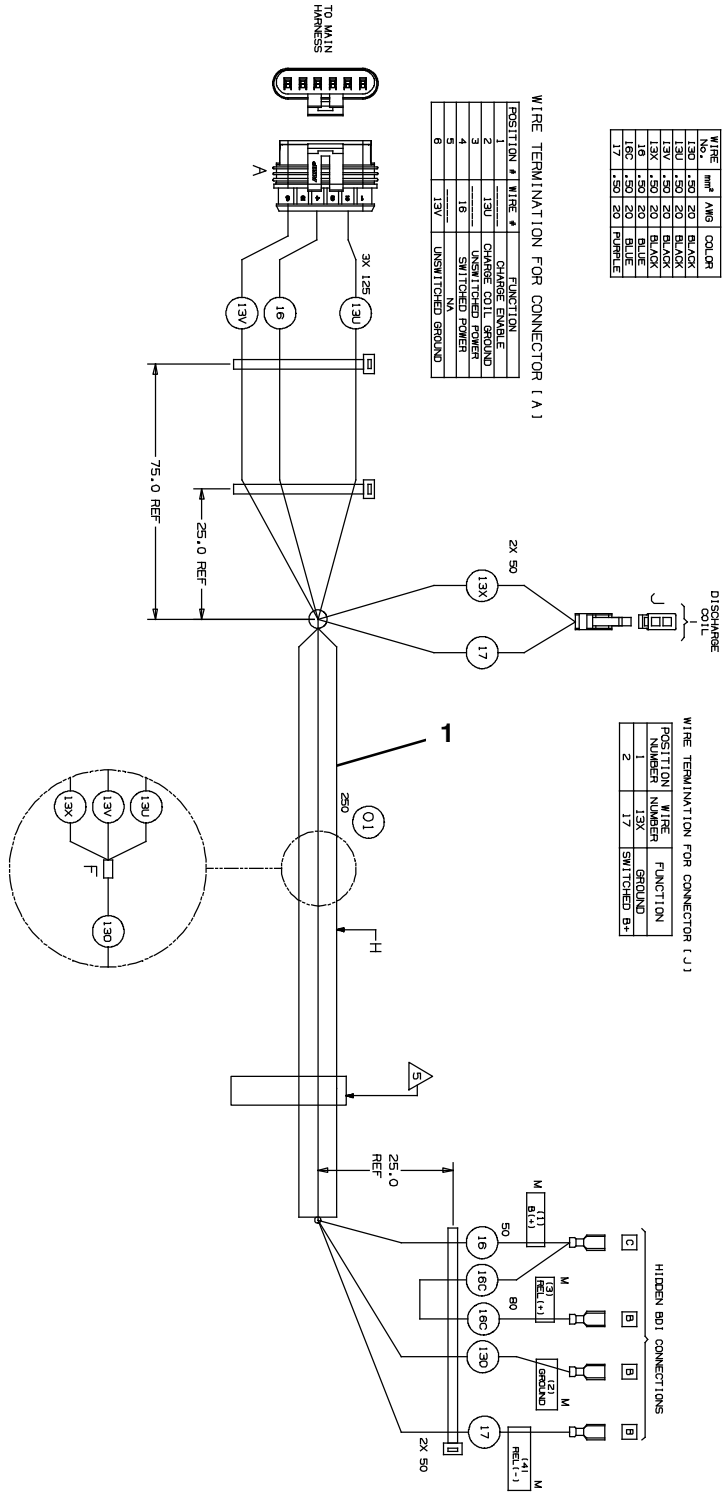
355270



Ref.	Part No.	Serial Number	Description	Qty.
1	1069703	(10552860-2000000)	Harness, Jumper [Phantom Agm / Tpp]	1

WIRE HARNESS, JUMPER (AGM) (S/N 1000000- 10552859)

355149



WIRE LIST

WIRE #	WIRE SIZE	WIRE COLOR
130	.50	20 BLACK
13U	.50	20 BLACK
13V	.50	20 BLACK
18	.50	20 BLACK
18C	.50	20 BLACK
19C	.50	20 BLUE
17	.50	20 PURPLE

WIRE TERMINATION FOR CONNECTOR (A)

POSITION #	WIRE #	FUNCTION
1	13U	CHARGE ENABLE
2	13U	CHARGE COIL GROUND
3	18	UNSWITCHED POWER
4	18	SWITCHED POWER
5	13V	UNSWITCHED GROUND

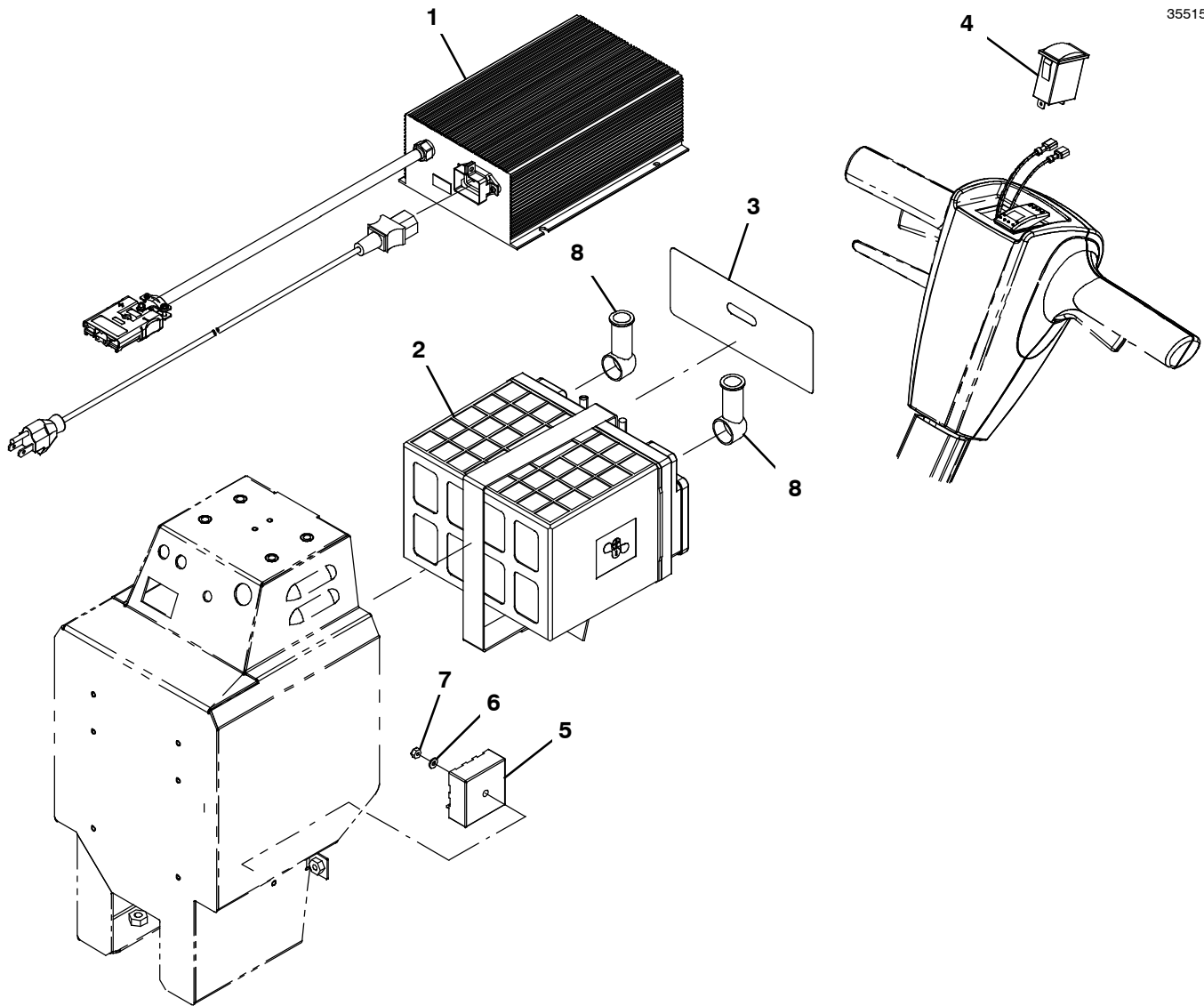
WIRE TERMINATION FOR CONNECTOR (J)

POSITION NUMBER	WIRE NUMBER	FUNCTION
1	13X	GROUND
2	17	SWITCHED B+

Ref.	Part No.	Serial Number	Description	Qty.
1	1064899	(1000000- 10552859)	Harness, Jumper [Phantom Agm / Tppl] (Replaced by 1069703)	1

BATTERY CONVERSION KIT (AGM TO LITHIUM)

355152



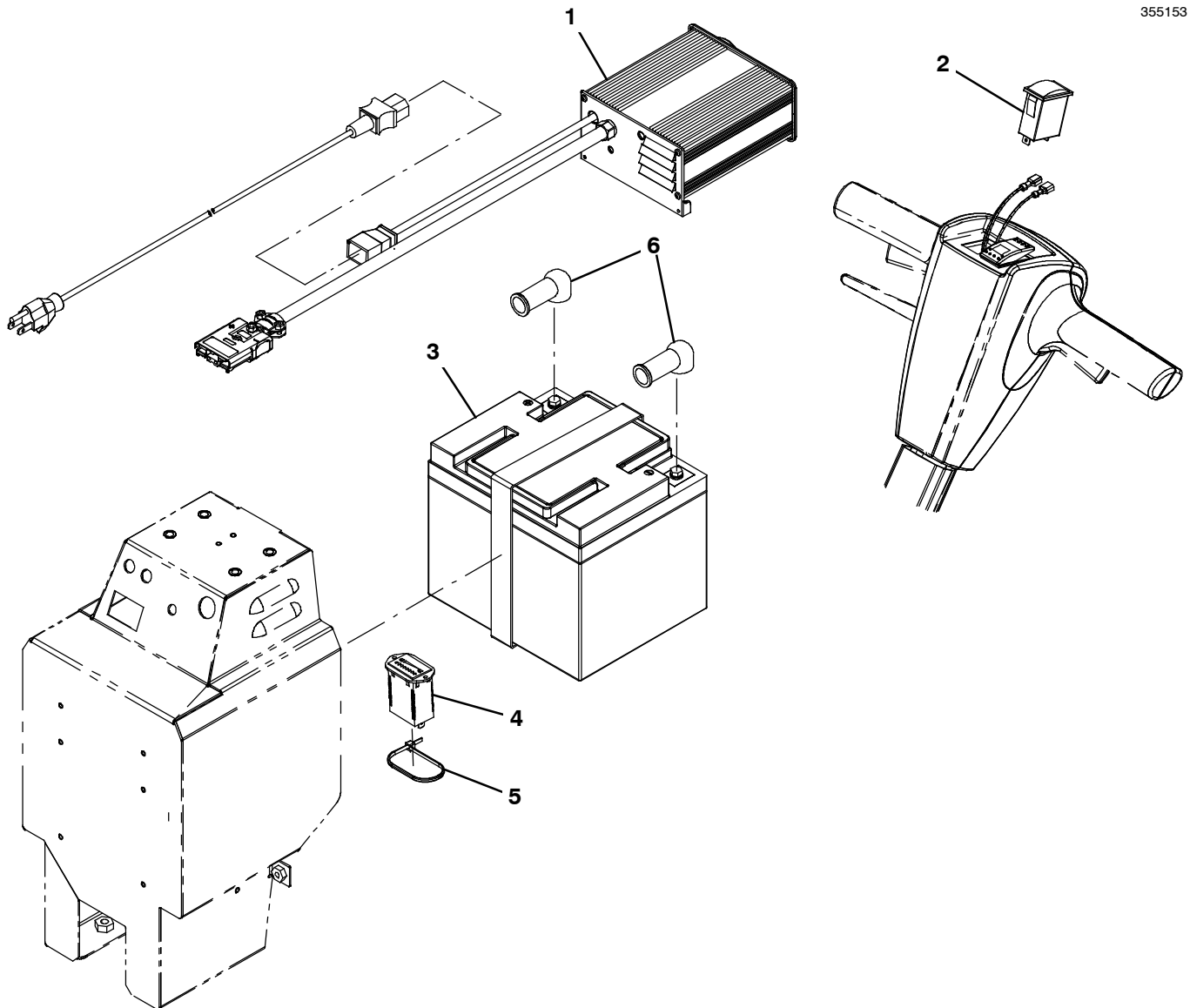
Ref.	Part No.	Serial Number	Description	Qty.
▽	9008723	(10000000-20000000)	Kit, Battery Conv, W/Bat [Agm To Li+]	1
▲	1 1065754	(10000000-20000000)	Charger, 12vdc, 16a, 120/240vdc [Li- Ion]	1
▲▽	2 9008690	(10000000-20000000)	Battery Replmt Kit, [Li+]	1
▲▲	3 1067699	(10000000-20000000)	Label, Battery, Li- Ion	2
▲	4 1048378	(10000000-20000000)	Gauge, Voltmeter, 12vdc Nominal	1
▲	5 1053209	(10000000-20000000)	Module, Timer, 12v, 5s Interval	1
▲	6 41578	(10000000-20000000)	Washer, Flat, 06, Ss	1
▲	7 75939	(10000000-20000000)	Nut, Hex, Lock, #06- 32, NI	1
▲	N/S 1063936	(10000000-20000000)	Harness, Jumper [Phantom Pi Lithium]	1
	8 611221	(10000000-20000000)	Boot, Terminal, Battery, 25.4mm, Blk	2

▽ ASSEMBLY

▲ INCLUDED IN ASSEMBLY

BATTERY CONVERSION KIT (LITHIUM TO AGM)

355153



	Ref.	Part No.	Serial Number	Description	Qty.
▽		9008688	(10000000- 20000000)	Battery Exchange Kit [Li+ To Agm]	1
▲	1	1067790	(10000000- 20000000)	Charger, Battery, 12vdc [Spe Eu & Na]	1
▲	2	1065438	(10000000- 20000000)	Gauge, Voltmeter, 12vdc Nominal [Agm]	1
▲	3	1065086	(10000000- 20000000)	Battery, 12vdc 0050ah	1
▲	4	1064516	(10000000- 20000000)	Indicator, Battery, 12vdc, 1.73volt/Cell	1
▲	5	130773	(10000000- 20000000)	Tie, Cable, Nyl, 11.0l, .14w, 3.0 Max. D	1
▲	N/S	1069703	(10552860- 20000000)	Harness, Jumper [Phantom Agm / Tppl]	1
▲	N/S	1064899	(10000000- 10552859)	Harness, Jumper [Phantom Agm / Tppl] (Replaced by 1069703)	1
	6	611221	(10000000- 20000000)	Boot, Terminal, Battery, 25.4mm, Blk	2

▽ ASSEMBLY

▲ INCLUDED IN ASSEMBLY