

Eagle Power



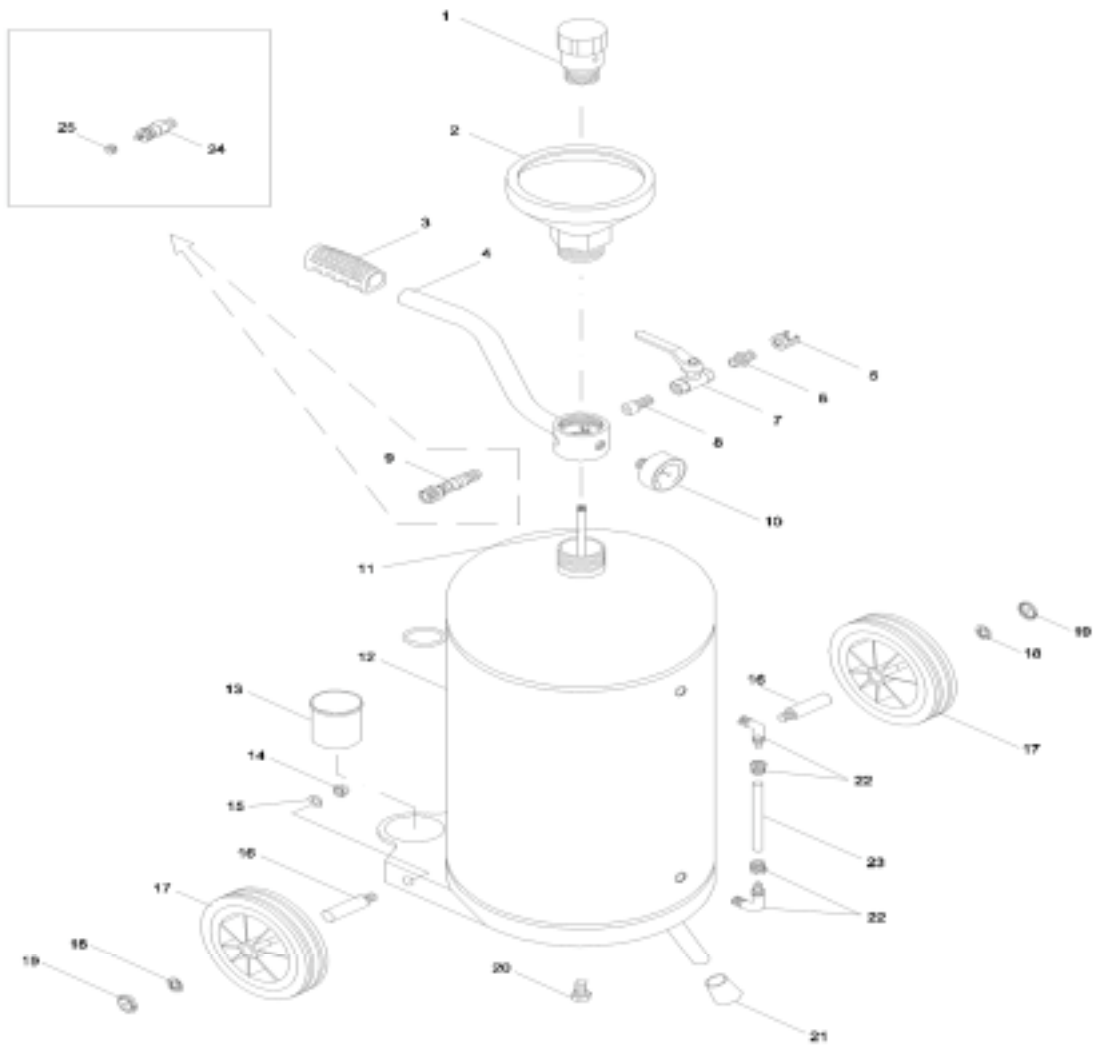
SPRAYERS

PARTS MANUAL

REV A

January 2003

LTX24-SPRAYER



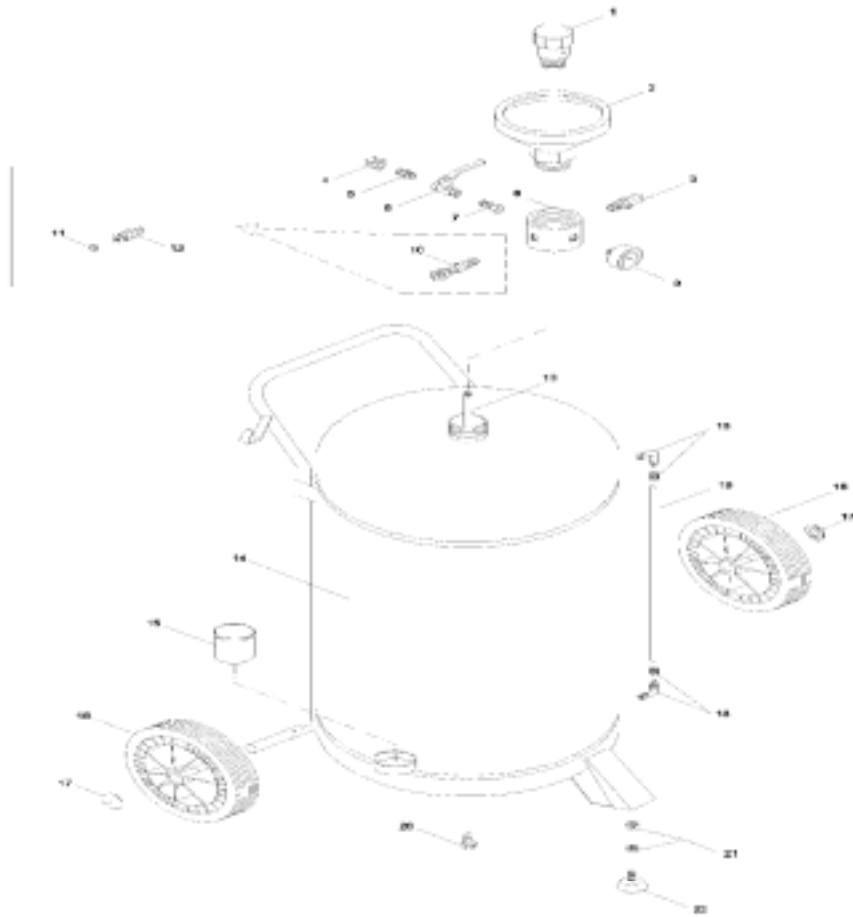
LTX24-SPRAYER

POS.	PART #	DESCRIPTION
1	2320050	Cap with stainless steel valve
1	2320018	Cap with stainless steel valve
2	2320023	Stainless steel neutral filling funnel
3	1200003	Rubber knob
4	2200005	Polished stainless steel handle for LT.24
5	1165006	1/4" milled nut
6	1165007	1/4" fitting for the milled nut
7	1320011	Ball valve 1/4" FF
8	2255005	1/4" stainless steel fitting for the draft pipe
9	1320014	1/4" slider faucet
10	1320012	1/4" pressure gauge d.50

LTX24-SPRAYER

POS.	PART #	DESCRIPTION
11	2270030	Stainless steel draft pipe
12	2115002	Polished welded st. steel bottle LT 24
13	2260017	Nozzle holder
14	1105135	Self-locking nut DIN 895 M10
15	1105305	Washer uni 6592 10x21 zb
16	2230023	Wheel bolt d.15 l.63 for LT.24
17	1250011	Wheel d.125 for LT.24
18	1250035	Lock washer d.15
19	1250049	Wheel cover d.125 grey
20	2255001	1/4" stainless steel pipe
21	1320013	Push rod d.22
22	1255014	1/4" union elbow 8x10
23	2270074	Rilsan level pipe LT.24
24	1320063	1/4" filling/discharge valve
25	1320064	Filling/discharge valve cap d.10

LTX50-SPRAYER



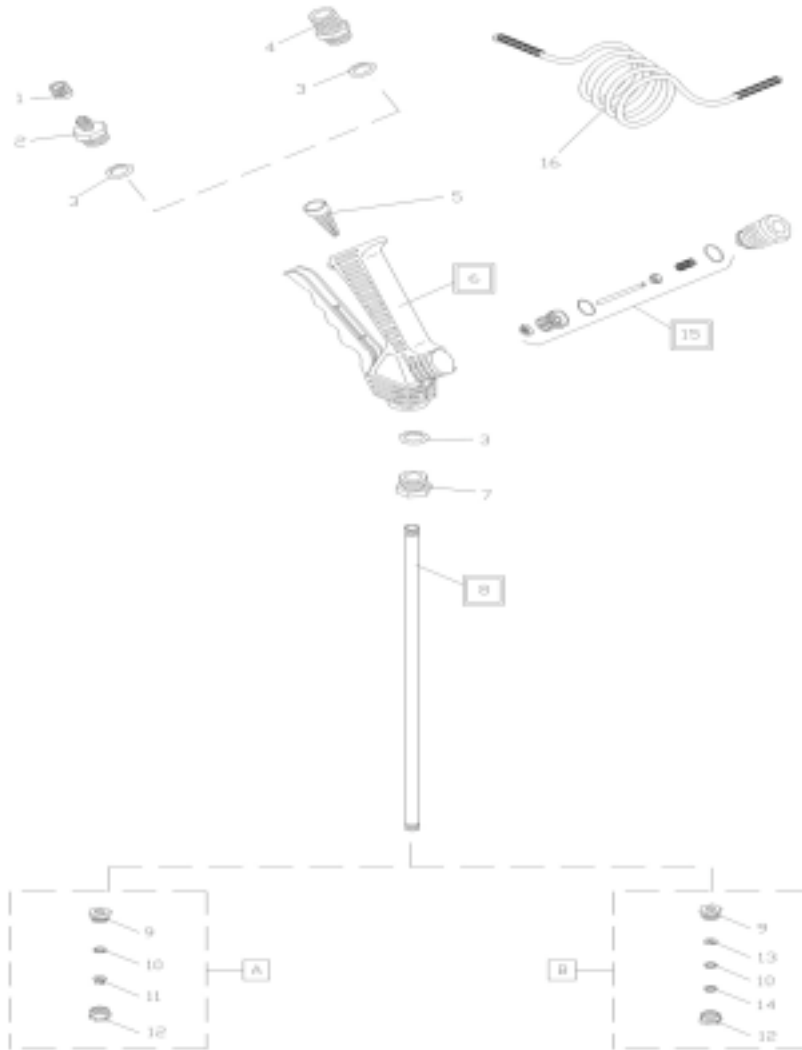
LTX50-SPRAYER

POS.	PART #	DESCRIPTION
1	2320018	Cap with stainless steel valve
1	2320050	Cap with stainless steel valve
2	2320023	Stainless steel neutral filling funnel
3	1320027	Small safety valve 7 bar
3	1320024	Small safety valve 4 bar
4	1165006	1/4" milled nut
5	1165007	1/4" fitting for the milled nut
6	1320011	Ball valve 1/4" FF
7	2255005	1/4" stainless steel fitting for the draft pipe
8	2255011	1 1/2" stainless steel sleeve w/4 holes
9	1320012	1/4" pressure gauge d.50
10	1320014	1/4" slider faucet
11	1320064	Filling/discharge valve cap d.10
12	1320063	1/4" filling/discharge valve
13	2270029	Stainless steel draft pipe

LTX50-SPRAYER

POS.	PART #	DESCRIPTION
14	2115011	Polished welded st. steel bottle LT 24
15	2260017	Nozzle holder
16	1250014	Gamma wheel d.160
17	1250013	Chrome-plated cup d.20
18	1255014	1/4" union elbow 8x10
19	2270075	Rilsan level pipe LT.50
20	2255001	1/4" stainless steel pipe
21	1105125	Nut UNI 5588 M 10 zb
22	1320034	Foot d.40 M 10

STANDARD LANCE-SPRAYERS



STANDARD LANCE-SPRAYERS

1	1165006	1/4" milled nut
2	2255055	1/2" - 1/4" Nipple for OR
3	1160006	OR 119 Gasket
4	2255018	1/2" - 1/2" Nipple for OR
5	1150003	Filter
6	1260018	Handgrip lance
6	1260055	Handgrip lance - EPDM -
7	2255015	Adapter 1/2" - 1/4" for OR
8	2270010	Lance pipe 510 mm
8	2270009	Lance pipe 740 mm
8	2270008	Lance pipe 910 mm
8	2270016	Lance pipe 1200 mm

STANDARD LANCE-SPRAYERS

1	1165006	1/4" milled nut
8	2270017	Lance pipe 1500 mm
9	1280003	Nozzle adapter
10	1280012	8 x Ø 10
11	1280009	Nozzle
12	1280002	Nut ring 3/8"
13	1280011	Conveyor
14	1280010	INOX plate hole Ø 1.5
15	1320068	Handgrip lance KIT
15	1320080	Handgrip lance - EPDM - KIT
16	1270007	Rilsan BB 8x6x9 - blue -
A	2310028	Complete nozzle
B	2310030	Complete flat nozzle

Eagle Power

Warranty Policy

Limited Warranty

Eagle Power Products (EPP) warrants new cleaning equipment against defects in material and workmanship under normal use and service to the original purchaser as detailed below.

10 Years

Subject to the conditions stated below, EPP warrants polyethylene tanks and housings to be free from defects in materials and workmanship for a period of ten years.

3 Years

Subject to the conditions stated below, EPP warrants all automatic scrubber components to be free from defects in materials and workmanship for a 3-year period. Parts replaced or repaired are warranted for the remainder of the original warranty period.

1 Year

Subject to the conditions stated below, EPP warrants all other cleaning equipment components to be free from defects in materials and workmanship for a 1-year period. Parts replaced or repaired are warranted for the remainder of the original warranty period. Batteries are prorated for one year.

EPP will furnish and charge for replacement parts, including transportation, to the original owner through an EPP authorized service center. If the part is returned within 30 days and is found defective, the owner will be credited for the cost of the replacement part including shipping and handling.

Labor charges are covered for one year from the date of purchase if provided by an authorized EPP service center. Travel is covered for 90 days for battery operated equipment only.

Wear items exempt from warranty include belts, carbon brushes, power cords, wheels, pad drivers, clutch plates, brushes, pads, handle grips, filters, screens, throttle cables, and squeegees.

This warranty shall not apply to failures caused by misuse or abuse, improper maintenance as stated in the operation manuals, use of unauthorized repair parts, repairs by other than an EPP authorized service center, and damage in transit.

EPP disclaims and denies any liability for any direct, indirect, special incidental or consequential damage which may be suffered as a result of sale, delivery, servicing, use, loss of any product, downtime, labor, freight, or other charges not expressly included herein.

Date Purchased: _____

Model Number: _____

Serial Number: _____

Please be sure to record this information. This information will be necessary for future warranty claims.

Eagle Power

1174 Northland Drive Mendota Heights, MN 55120
651.686.5399 Fax 651.686.5695
www.eaglepower.com

Eagle Power Products Sales and Service Provided by: