

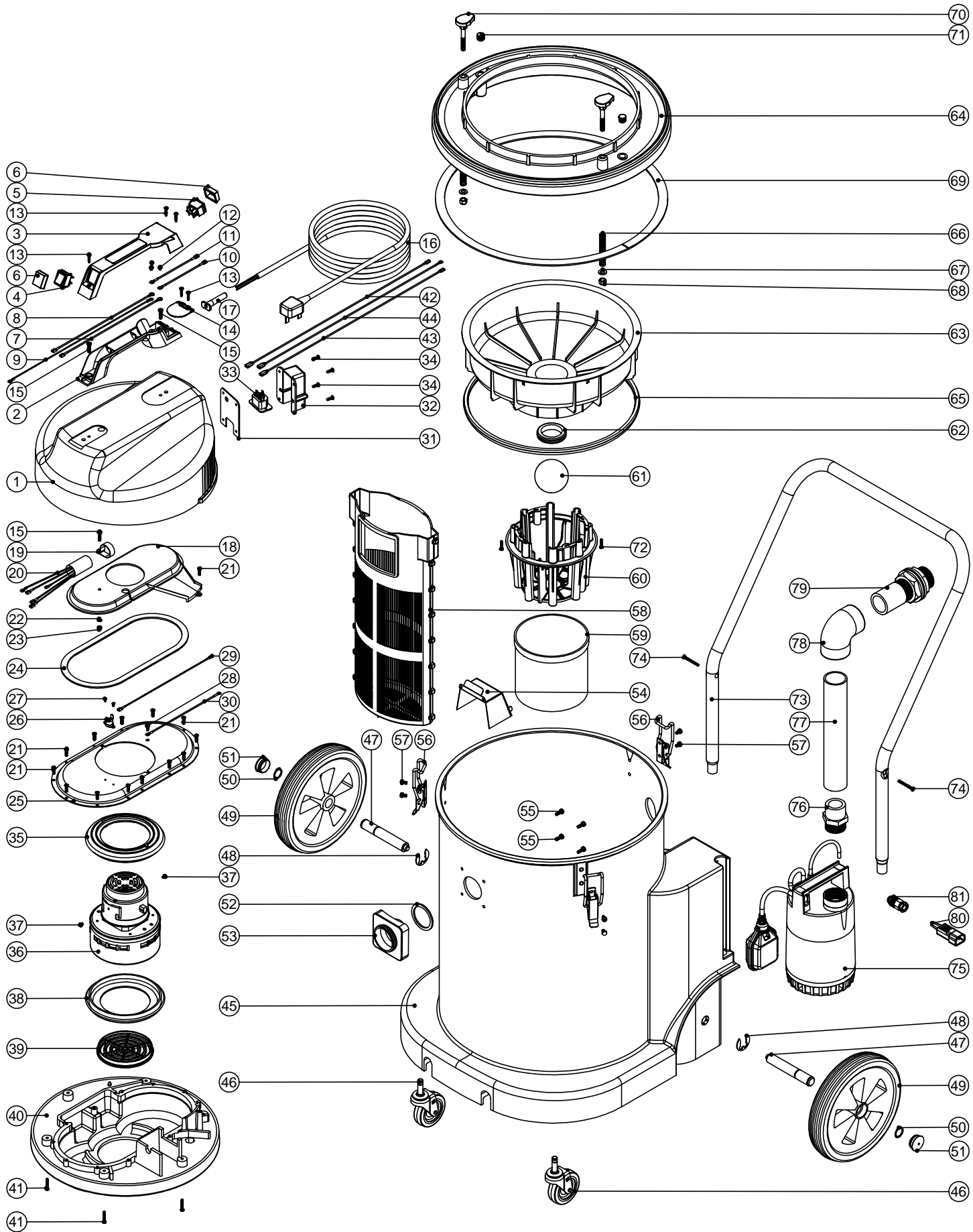
Numatic International Spare Parts

234098

DRAWING: EXP529 ISS:A01

09/08/2001

Model No: WV1800AP (Automatic Pump)



Numatic International Spare Parts

Model No: WV1800AP (Automatic Pump)

| POS: | ITEM NO: | DESCRIPTION: | COMMENTS: |
|------|----------|--|-------------------|
| 1 | 301092 | PROCESSED HEAD TOP | |
| 2 | 320007 | HANDLE MOULDING | |
| 3 | 206211 | HANDLE COVER | |
| 4 | 220843 | BLUE ROCKER SWITCH | |
| 5 | 220582 | GREEN ROCKER SWITCH | |
| 6 | 220238 | SWITCH BOOT | |
| 7 | 320003 | 200MM LONG BROWN LINK WIRE | |
| 8 | 320183 | 200MM LONG BLUE LINK WIRE | |
| 9 | 320093 | 400MM LONG GREEN/YELLOW LINK WIRE | |
| 10 | 320090 | 100MM LONG BROWN LINK WIRE | |
| 11 | 320325 | 100MM LONG BLUE LINK WIRE | |
| 12 | 219090 | M4 X 8MM LONG POZI PAN SEMS SCREW | |
| 13 | 219107 | No6 X 5/8 INCH LONG POZI PAN PLASTITE SCREW | |
| 14 | 220131 | CABLE CLAMP | |
| 15 | 219546 | M5 X 20MM LONG POZI PAN SEMS SCREW | |
| 16 | 220232 | MAINS CABLE (3 WIRE/UK PLUG) | |
| | 220253 | MAINS CABLE (3 WIRE / CONTINENTAL PLUG) | |
| | 220059 | MAINS CABLE (3 WIRE / NO PLUG) | |
| | 220222 | MAINS CABLE (3 WIRE / SWISS PLUG) | |
| | 220839 | MAINS CABLE (3 WIRE / USA PLUG) | |
| | 299039 | MAINS CABLE (2 WIRE / AUSTRALIAN PLUG) | |
| | 220468 | MAINS CABLE (3 WIRE / SOUTH AFRICAN PLUG) | |
| 17 | 220132 | STRESS RELIEF SLEEVE | |
| 18 | 301038 | PROCESSED AIR SEPARATOR | 230V MACHINES |
| | 225153 | AIR SEPARATOR | 110/120V MACHINES |
| 19 | 220288 | 30MM DIAMETER P-CLIP | 230V MACHINES |
| 20 | 320198 | SUPPRESSOR MODIFICATION | 230V MACHINES |
| 21 | 219370 | No8 X 5/8 INCH LONG PLASTITE STAINLESS STEEL SCREW | |
| 22 | 219003 | M5 FORM A WASHER | |
| 23 | 219076 | M5 NYLON INSERT NUT | |
| 24 | 202012 | GASKET | |
| 25 | 225062 | TOP MOTOR HOUSING | |
| 26 | 220532 | THERMOSTAT | |
| 27 | 219491 | M5 X 3MM LONG POZI PAN TAPTITE SCREW | |
| 28 | 219471 | M4 X 12MM LONG POZI PAN SEMS SCREW | |
| 29 | 320286 | 240MM LONG WHITE LINK WIRE | |
| 30 | 320092 | 180MM LONG GREEN/YELLOW LINK WIRE | |
| 31 | 202082 | SOCKET COVER GASKET | |
| 32 | 206511 | SOCKET COVER | |
| 33 | 229018 | POWER TAKE OFF SOCKET | |
| 34 | 219569 | No8 X 1/2 INCH LONG POZI PAN STAINLESS STEEL TAPTITE SCREW | |
| 35 | 202003 | TOP MOTOR GASKET | |
| 36 | 205060 | 230V MOTOR | |
| | 205062 | 110/120V MOTOR | |
| 37 | 219566 | M4 X 6MM LONG POZI PAN SCREW | |
| 38 | 202005 | MOTOR BOTTOM GASKET | |
| 39 | 206010 | FAN GUARD | |
| 40 | 301047 | PROCESSED BOTTOM MOTOR HOUSING | |
| 41 | 219369 | No8 X 1 INCH LONG POZI PAN STAINLESS STEEL PLASTITE SCREW | |
| 42 | 320427 | 520MM LONG BROWN LINK WIRE | |
| 43 | 320428 | 520MM LONG BLUE LINK WIRE | |
| 44 | 320429 | BLUE LINK WIRE | |
| 45 | 300139 | WV1800AP GREY PROCESSED DRUM | |
| | 300140 | WV1800AP RED PROCESSED DRUM | |
| | 300141 | WV1800AP BLUE PROCESSED DRUM | |
| | 300142 | WV1800AP GREEN PROCESSED DRUM | |
| | 300143 | WV1800AP YELLOW PROCESSED DRUM | |
| 46 | 204060 | 3 INCH CASTOR | |
| 47 | 206452 | STUB AXLE | |
| 48 | 219306 | E-CLIP | |
| 49 | 204028 | 10 INCH WHEEL | |
| 50 | 219308 | CIRCLIP | |
| 51 | 206131 | BLACK PLASTIC CAP | |
| 52 | 202027 | HOSE FLANGE GASKET | |
| 53 | 214001 | DIE CAST FLANGE | |
| 54 | 303482 | DEFLECTOR | |
| 55 | 219045 | M5 X 16MM LONG POZI PAN SEMS SCREW | |
| 56 | 206135 | TOGGLE FASTENER | |
| 57 | 219047 | M5 X 10MM LONG POZI PAN SEMS SCREW | |
| 58 | 207110 | FILTER ASSEMBLY | |
| 59 | 207073 | GAUZE FILTER | |
| 60 | 225130 | MOULDED FLOAT CAGE | |
| 61 | 206026 | POLYPROP BALL | |
| 62 | 220235 | FLOAT GROMMET | |
| 63 | 225101 | FLOAT MOULDING | |
| 64 | 226021 | BOTTOM PLATE MOULDING | |
| 65 | 202036 | FLOAT MOULD EXTRUSION SEAL | |
| 66 | 219418 | COMPRESSION SPRING | |
| 67 | 219010 | M8 FORM A WASHER | |
| 68 | 219078 | M8 STIFFNUT | |
| 69 | 212024 | INSEAL | |
| 70 | 206242 | HOOKED KNOB | |
| 71 | 206243 | RIBBED TUBE INSERT | |
| 72 | 219568 | No8 X 3/4 INCH LONG POZI PAN STAINLESS STEEL SCREW | |
| 73 | 402100 | BLACK DRUM HANDLE | |
| 74 | 219316 | No10 X 43MM LONG POZI PAN COUNTER SUNK PLASTITE SCREW | |
| 75 | 225110 | 240V / 50HZ PUMP | |
| | 225111 | 110/120V / 50Hz PUMP | |
| | 225112 | 110/120V / 60Hz PUMP | |
| 76 | 304198 | 1 1/4 INCH HEXAGON NIPPLE | |
| 77 | 390935 | 270MM LONG TUBE | |
| 78 | 206547 | 1 1/2 INCH ELBOW | |
| 79 | 303547 | 1 1/2 TANK CONNECTOR MODIFICATION | |
| 80 | 220133 | STRAIGHT 3 PIN PLUG | |
| 81 | 220106 | M16 CABLE GLAND | |