

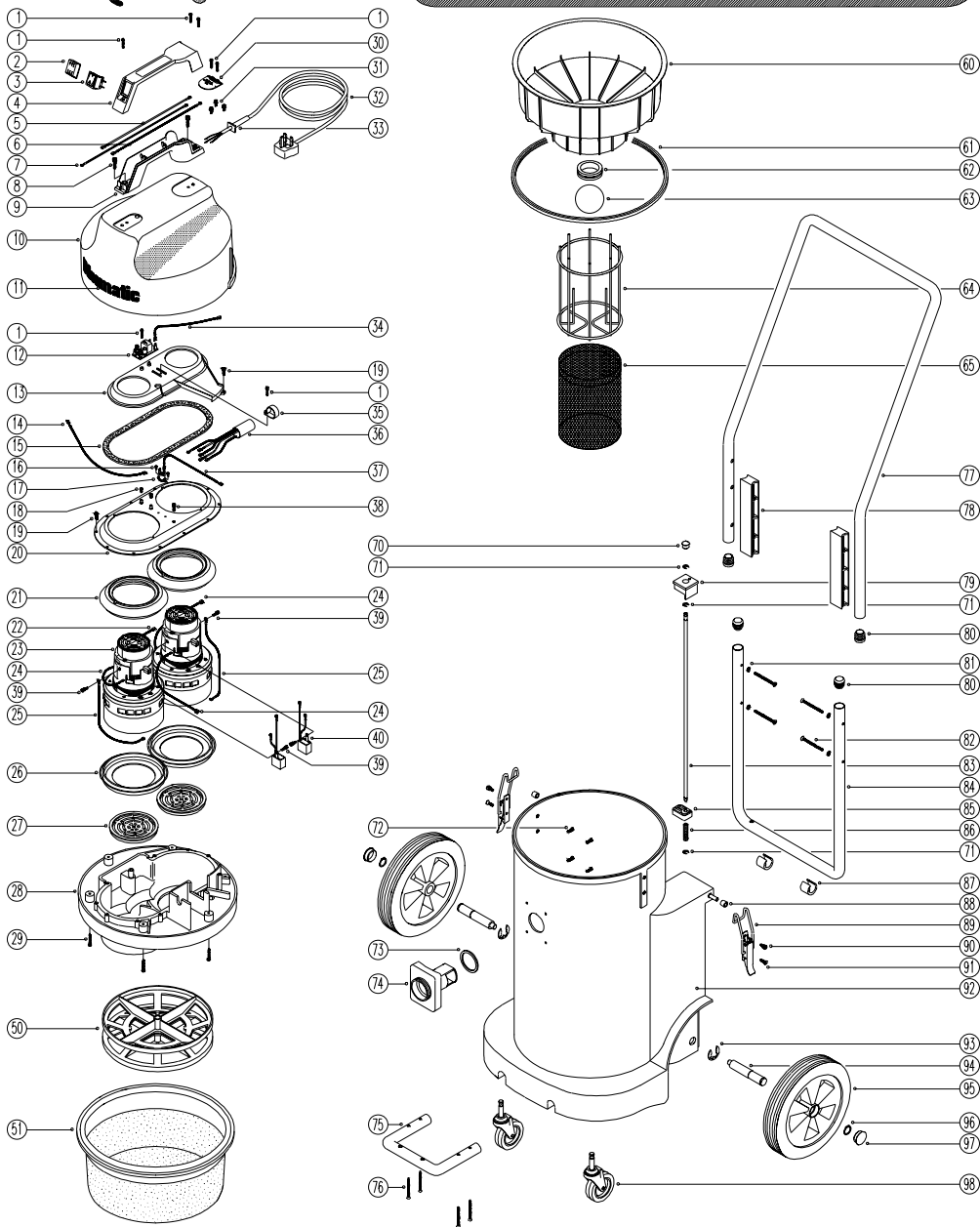


Spare Parts

Model No. **WVD902**

Numatic, International, Chard, Somerset, TA20 2GB.
 Tel: 01460 68480 Fax: 01460 68560
 Sales - Tel: 01460 68600 Fax: 01460 68458

231869
 DRAWING:EXP378 ISS:02
 10/02/98



MODEL No. WVD902

SPARE PARTS

POS.	PART No	DESCRIPTION
1	219107	No6 x 5/8" Plastite Screw
2	220238	Switch Boot
3	220286	Orange Rocker Switch (230V)
	220552	Red Rocker Switch (110/120V)
4	206213	Handle Cover
5	320183	200mm Long x 1.0mm Thick Blue Link Wire (230V)
	320322	200mm Long x 1.5mm Thick Blue Link Wire (110/120V)
6	320003	200mm Long x 1.0mm Thick Brown Link Wire (230V)
	320320	200mm Long x 1.5mm Thick Brown Link Wire (110/120V)
7	320093	400mm Long Green/Yellow Link Wire
8	219546	M5x 20mm Long Pozi Pan Sems Screw
9	320291	Handle Body Moulding
10	227043	Cover Moulding (No Numatic Logo)
11	210085	Red Numatic Logo
	210049	Blue Numatic Logo
	210412	Green Numatic Logo
	210039	Yellow Numatic Logo
12	220555	230V~ Delay Start Module
	220556	110/120V~ Delay Start Module
13	225154	Air Separator Duplex
14	220575	260mm Long Blue Link Wire (110/120V)
15	220212	Gasket
16	219491	M3 x 5mm Long Tapitite Screw
17	220532	Thermostat
	220579	Thermostat (C.S.A. Spec Machines)
18	219095	M4 x 6mm Long Tapitite Screw
19	219370	No8 x 5/8" Plastite Screw
20	225063	Top Motor Housing
21	202003	Top Motor Gasket
22	320286	240mm Long White Motor Link Wire
23	205060	230V~ Motor
	205062	110/120V~ Motor
24	320294	255mm Long White Motor Link Wire
25	320092	180mm Long Green/Yellow Link Wire
26	202005	Bottom Motor Gasket
27	206010	Fan Guard
28	301048	Bottom Motor Housing
29	219369	No8 x 1" Plastite 2.50 Screw
30	220131	Cable Clamp
31	219090	M4 x 8mm Long Sems Screw
32	220232	Mains Cable (U.K. Plug)
	220059	Mains Cable (No Plug) (230V)
	220253	Mains Cable (C.E.E. Plug)
	220094	Mains Cable (No Plug) (110/120V)
	220222	Mains Cable (Swiss Plug)
	220221	Mains Cable (C.S.A. Plug)
	299039	Mains Cable (Australian Plug)
	220468	Mains Cable (15Amp Plug; South Africa)
33	220132	Stress Relief (230V Machines)

POS.	PART No	DESCRIPTION
33..	220541	Stress Relief (110/120V Machines)
34	320287	220mm Long Brown Link Wire (110/120V)
35	220288	30mm Diameter White P-Clip (230V Machines)
36	220289	Suppressor (230V Machines)
37	320293	260mm Long Brown Link Wire
38	219471	M4 x 12mm Long Sems Screw
39	219566	M4 x 6mm Long Tapitite Sems Screw
40	220682	Suppressor (110/120V Machines)
41		
50	209100	Double Filter Grid
51	207030	14" White Filter
60	225101	Float Moulding
61	202036	Float Moulding Seal Extrusion
62	220235	Grommet
63	206026	Polyprop Ball
64	225075	Float Cage
65	207073	Gauze Filter
70	206132	Plastic Cap
71	219307	'E' Clip
72	219105	N8 x 5/8" Long Plastite Screw
73	202027	Flange Gasket
74	206117	Hose Connection Flange
75	303127	Tool Mounting Bar
76	219316	No10 x 43mm Long Plastite Screw
77	403129	Upper Handle
78	206128	Handle Block Spacer
79	206126	Locking Bar Knob
80	20637V	Tube End Stop
81	219423	M6 External Lock Washer
82	219422	M6 x 70mm Long Countersunk Screw
83	206133	Locking Bar
84	303128	Lower Handle
85	206127	Locking Bar Support
86	219312	Compression Spring
87	206295	Plastic Saddle Foot
88	21985V	Spacer
89	206135	Toggle
90	219047	M5 x 10mm Long Sems Screw
91	219330	M5 x 12mm Long Countersunk Screw
92	300031	Container - Red
	300030	Container - Blue
	325045	Container - Green
	325046	Container - Yellow
93	219306	'E' Clip
94	206137	Stub Axle
95	204028	10" Wheel
96	219308	Circlip
97	206131	Plastic Cap
98	204060	75mm Castor